

VOP-1150TV

Industrial Flat Panel Monitor
with 15" LCD in Direct-VGA Port



Features

- 15" XGA TFT LCD with resolution up to 1024 x 768
- Multi-scan function supports XGA, SVGA, VGA
- Front accessible display on/off switch
- Auto-recognition of input signal
- Supports Panel, rack, wall mount, desktop and VESA Arm
- NEMA4/IP65 compliant Al-Mg front panel

Introduction

The VOP-1150TV is an "industrial-grade" 15" TFT LCD flat panel monitor with an Al-Mg front panel and modern appearance. As one of the most competitively priced 15" LCD monitors on the market, the VOP-1150TV is extremely light and thin. In addition, the VOP-1150TV also provides many industrial-grade features such as an NEMA4/IP65 panel, steel chassis, VESA mounting flexibility and more. The VOP-1150TV is especially suitable for bundling with industrial PCs such as the IPC-610 or IPC-6806. This combination makes your system extremely reliable and tough, ready to operate in a variety of industrial applications.

Commercial price but industrial-grade

When users want a stable system, they always search for industrial grade PCs to guarantee reliability. Many times they also want to buy an industrial-grade monitor to make the system more stable. However, the traditional high cost of these monitors has always been a concern. The VOP-1150TV is specially designed to answer these needs. Although attractively priced, the VOP-1150TV still provides many industrial-grade features expected by this market.

Thin and light design

Compared to other industrial LCD monitors, the VOP-1150TV focuses on reducing overall size, thickness and weight. This gives the VOP-1150TV a more attractive and functional appearance while increasing ease of integration and installation. The thickness of VOP-1150TV is only 48 mm and the weight is 4.5 kg.

Industrial-grade functions

The chassis of the VOP-1150TV is of made steel, and the front panel is of Al-Mg that is NEMA4/IP65 compliant and offers an attractive silver finish by request. The VOP-1150TV offers an optional capacitive touchscreen and features Direct-VGA signal transmission to allow data viewing up to 50 m away. In addition, the VOP-1150TV also provides a PS/2 port to let customers operate a keyboard/mouse from the front panel. The convenient front On-Screen-Display function let users adjust the image easily.

Specification

- **Display Interface:** RGB (VGA)
- **Control:** OSD (On Screen Display) Control Pads on the front panel
- **Front panel:** Al-Mg, NEMA4/IP65 compliant
- **Mounting:** Panel, rack, wall mount, desktop and VESA ARM
- **Dimensions (W x H x D):** 383 x 307 x 48 mm (15" x 12" x 1.9")
- **Gross Weight:** 4.5 Kgs (9.9 lbs)
- **Power:** External 48 W power adapter, AC 100 V ~ 230 V input, +12 V @ 4 A output
- **Operating temperature:** 0° ~ 50° C (32° ~ 122° F)
- **Storage temp:** -20° ~ 60° C (-4° ~ 140° F)
- **Storage humidity:** 5 ~ 95 % non-condensing
- **Vibration (operating):** 5 ~ 17 Hz, double-amplitude displacement 17 ~ 500 Hz, 1.0 G peak to peak
- **CE, FCC, BSMI, CCC compliant**

Touchscreen (optional)

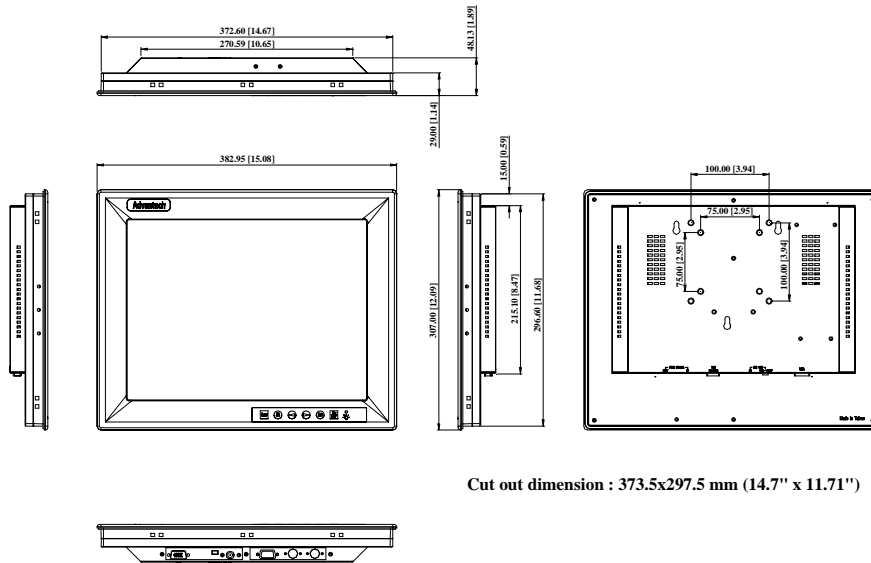
- **Type:** 8 wire, analog resistive
- **Resolution:** continuous
- **Light transmission:** 75%
- **Controller:** RS-232 interface
- **Power Consumption:** +5 V @ 200 mA
- **OS support:** MS-DOS, Windows 3.1/95/98/NT/2000/XP
- **Lifespan:** 100 million touches

LCD Specification	
Display type	XGA TFT LCD
Display size	15"
Max colors	16.7 M
Max resolution	1024 x 768
View Angle	120 (H), 100 (V)
Luminance	250 cd/m ²
Storage Temperature	-20 ~ 60 C (-4 ~ 140 F)
Operating Temperature	0 ~ 50 C (32 ~ 122 F)
Backlight lifetime	50,000 hrs
Contrast Ratio	150 :1

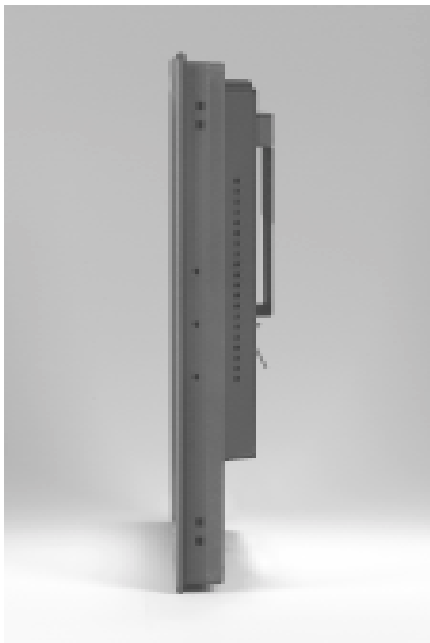
CE FCC BSMI

Dimensions

Unit: mm



Side View



Ordering Information

- VOP-1150TVB**
Industrial slim type 15" TFT LCD with direct VGA port, black
- VOP-1150TVB-T**
Industrial slim type 15" TFT LCD with direct VGA, resistive touch screen, black
- VOP-1150TVS**
Industrial slim type 15" TFT LCD with direct VGA port, silver
- VOP-1150TVS-T**
Industrial slim type 15" TFT LCD with direct VGA, resistive touch screen, silver

Accessories

- 1700155001**: 50 M VGA cable for FPM-series
- 1700153000**: 30 M VGA cable for FPM-series
- 1700152000**: 20 M VGA cable for FPM-series
- 1700151000**: 10 M VGA cable for FPM-series
- 1700155000**: 5 M VGA cable for FPM-series
- 9689000355**: RS-232/485 converter for T/S (USA)
- 9689000356**: RS-232/485 converter for T/S (UK)
- 9689000357**: RS-232/485 converter for T/S (FR)
- 1700090000**: 10 M cable for T/S
- 1700090001**: 4.5 M cable for T/S
- 1700090002**: 3 M cable for T/S