

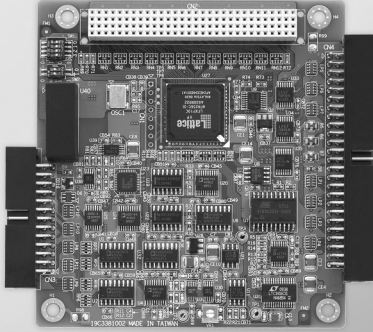
# PCM-3810I

# PCM-3813I

250 kS/s, 12-bit, 16-ch  
Multifunction PCI-104 Module

100 kS/s, 12-bit, 32-ch Isolated  
Analog Input PCI-104 Module

NEW



PCM-3810I

RoHS  
COMPLIANT  
2002/95/EC

FCC CE

## Specifications

### Analog Input

- Channels 16 single-ended or 8 differential or combination
- Resolution 12 bits
- Max. Sampling Rate 250 kS/s
- Ring Buffer Size 4,096 samples
- Input Range and Gain List

Gain	0.5	1	2	4	8
Unipolar	N/A	0 ~ 10	0 ~ 5	0 ~ 2.5	0 ~ 1.25
Bipolar	±10	±5	±2.5	±1.25	±0.625

- Input Protection 30 Vp-p
- Sampling Mode Polling, pacer, double-clock, or external TTL trigger
- Trigger Mode Pre-trigger, post-trigger, delay-trigger, about-trigger

### Analog Output

- Channels 2
- Output Range Internal Reference (V): 0 ~ 5, 0 ~ 10, ±5, ±10  
External Reference: 0 ~ +x V @ +x V (-10 ≤ x ≤ 10)  
-x ~ +x V @ +x V (-10 ≤ x ≤ 10)

- Resolution 12 bits
- Output Rate 250 kS/s
- Ring Buffer Size 4,096 samples
- Slew Rate 20 V/μs
- Operation Mode Software polling, continuous out

### Digital Input/Output

- Channels 16
- Compatibility 5V/TTL

### Counter/Timer

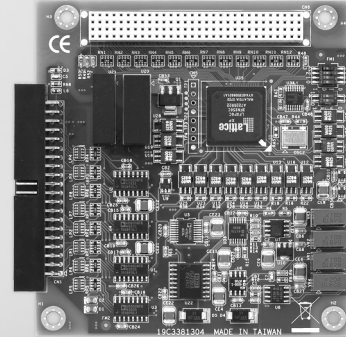
- Channels 3 (independent)
- Resolution 24 bits
- Compatibility 5 V/TTL
- Max. Input Frequency 10 MHz
- Counter Modes 12 (programmable)
- Interrupt Capable Ch. 3
- PWM Channels 3

### General

- Bus Type PCI-104
- I/O Connectors 1 x 26-pin, 1 x 50-pin box header
- Dimensions (L x H) 96 x 90 mm (3.8" x 3.5")
- Operating Temperature 0 ~ 60° C (32 ~ 140° F) (refer to IEC 68-2-1, 2)
- Storage Temperature -20 ~ 70° C (-4 ~ 158° F)

## Ordering Information

- PCM-3810I 250 kS/s, 12-bit Multi. PCI-104 Module
- ADAM-3950 50-pin DIN-rail Flat Cable Wiring Board



PCM-3813I

RoHS  
COMPLIANT  
2002/95/EC

FCC CE

## Features

- 32 single-ended or 16 differential analog inputs
- Programmable gain for each input channel
- Automatic channel/ gain/ SD scanning
- Onboard ring buffer (1,024 samples)
- Isolation protection (2,500 V<sub>DC</sub>)
- BoardID™ switch

## Specifications

### Analog Input

- Channels 32 single-ended or 16 differential or combination
- Resolution 12 bits
- Max. Sampling Rate 100 kS/s
- Ring Buffer Size 1,024 samples
- Input Range and Gain List

Gain	0.5	1	2	4	8
Unipolar	N/A	0 ~ 10	0 ~ 5	0 ~ 2.5	0 ~ 1.25
Bipolar	±10	±5	±2.5	±1.25	±0.625

- Input Protect 30 Vp-p
- Input Impedance 100 MΩ/10pF (off); 100 MΩ/100pF (on)
- Sampling Mode Software polling, onboard programmable pacer, or external TTL trigger

### General

- Bus Type PCI-104
- I/O Connectors 1 x 40-pin box header
- Dimensions (L x H) 96 x 90 mm (3.8" x 3.5")
- Operating Temperature 0 ~ 60° C (32 ~ 140° F) (refer to IEC 68-2-1, 2)
- Storage Temperature -20 ~ 70° C (-4 ~ 158° F)

## Ordering Information

- PCM-3813I 100 kS/s, 12-bit Isolated AI PCI-104 Module
- ADAM-3937 DB37 DIN-rail Wiring Board