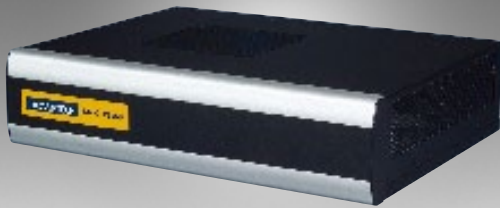


# ARK-DS350(AM3)

## High Performance Graphics Digital Signage Platform

**NEW**



### Features

- AMD RS780E+ SB710 platform with selection of value and high-end AMD CPU, up to Full HD (1080P)
- Integrated ATI Radeon™ HD 3200 chip provides excellent graphics and DirectX® 10 high definition hardware video decode
- 128 MB of dedicated DDR3 video memory on board
- Two HDMI (1 x full-function; 1 x video only) and 1 VGA, supports dual displays
- Built-in Mini PCIe slot for easy expansion e.g. WiFi, TV-tuner
- Maximum 8 x USB 2.0 (External 4 + Internal 4), 2 x COM (Internal 1 x COM)

Tested by the following software partners:



### Specifications

Processor System	CPU	AMD CPU Athlon II XL V66C 2.8Ghz or Sempron single core equipped	
	System Chipset	AMD 780E + SB710	
	L2 Cache	2 MB (depends on CPU Type)	
	BIOS	AMI 8 MB SPI BIOS	
	Front Side Bus	HT3.0	
Memory	Technology	2 x DDR3 204 pin SO-DIMM	
	Max. Capacity	Default 2GB, max. up to 4GB	
Display	Chipset	AMD 780E, integrated ATI Radeon HD 3200 graphics	
	Memory Size	Shared system memory up to 512 MB, built in DDR3 128MB side port memory	
	Resolution(Chipset support)	CRT	2048x1536 @85 for 4:3 format (Max Resolution) 2560x1440 @75 for 16:9 format (Max Resolution) 2456x1536 @60 for 4:3 format (Max Resolution)
			HDMI up to 1080P (Max Resolution)
		Output	HDMI x 2, VGA x 1
	Dual display	Any 2 display outputs simultaneous	
Video format	UVD 2.01, HD codecs MPEG-2, H.264/AVC MPEG-4 and VC-1		
Storage	SATA	Default 2.5" SATA HDD, 160GB (9.5 mm height only)	
	CF	CompactFlash socket for type I/II	
Ethernet	Interface	Gigabit LAN Controller	
	Controller	Realtek RTL8111D	
IO Interface	Connector	2 x RJ-45	
	HDMI	2 HDMI 1.3a (HDMI 1 audio output is through SPDIF port)	
	VGA	1 (D-sub 15-pin)	
	LAN	2 (RJ-45)	
	USB	4 (USB 2.0 compliant)	
	Audio	1 audio connector with Line-out, Mic-in, Line-in phone jacks	
	Serial	1 x COM (RS-232)	
	Mini-PCIe (Internal)	1 (for optional expansion modules)	
	Power input	1 DC jack	
	Power lock switch	1	
Power Requirement	Management	ACPI 2.0	
	Power Consumption Input Voltage	Typical: 28 W (CPU is AMD Athlon II XL V66C 2.8 Ghz and w/o expansion) Max.: 49 W (CPU is AMD Athlon II XL V66C 2.8 Ghz and w/o expansion)	
	Input Voltage	19 V DC-in (ATX mode)	
	Other	Supports Boot on Power back and schedule boot up function	
Watchdog Timer	Output	Interrupt, system reset	
	Interval	255-level timer interval, setup by software	
Physical Characteristics	Mounting	Easy mounting kits for LCD or Plasma	
	Dimensions (W x H x D)	250 x 60 x 195 mm	
	Weight	2.0 kg	
Environment	Temperature	0 - 40° C (32 - 104° F), operating -20 - 70° C (-4 - 158° F), storage	
	Relative Humidity	95% @ 40° C (non-condensing), Operating	
	Vibration Resistance	0.5Gms, IEC 60068-2-64, Random 5-500Hz, 1hr/axis	
Software Development Kit	Operating System	Supports Microsoft Windows 7, XP with SP3, XP Embedded	
	EWf & WDT SDK	EWf and WDT library for signage stability design in XPE	
	Linux	Linux Fedora 14	
Certification	Electromagnetic	CE, FCC	
	Safety	UL, CB, CCC, BSMI	

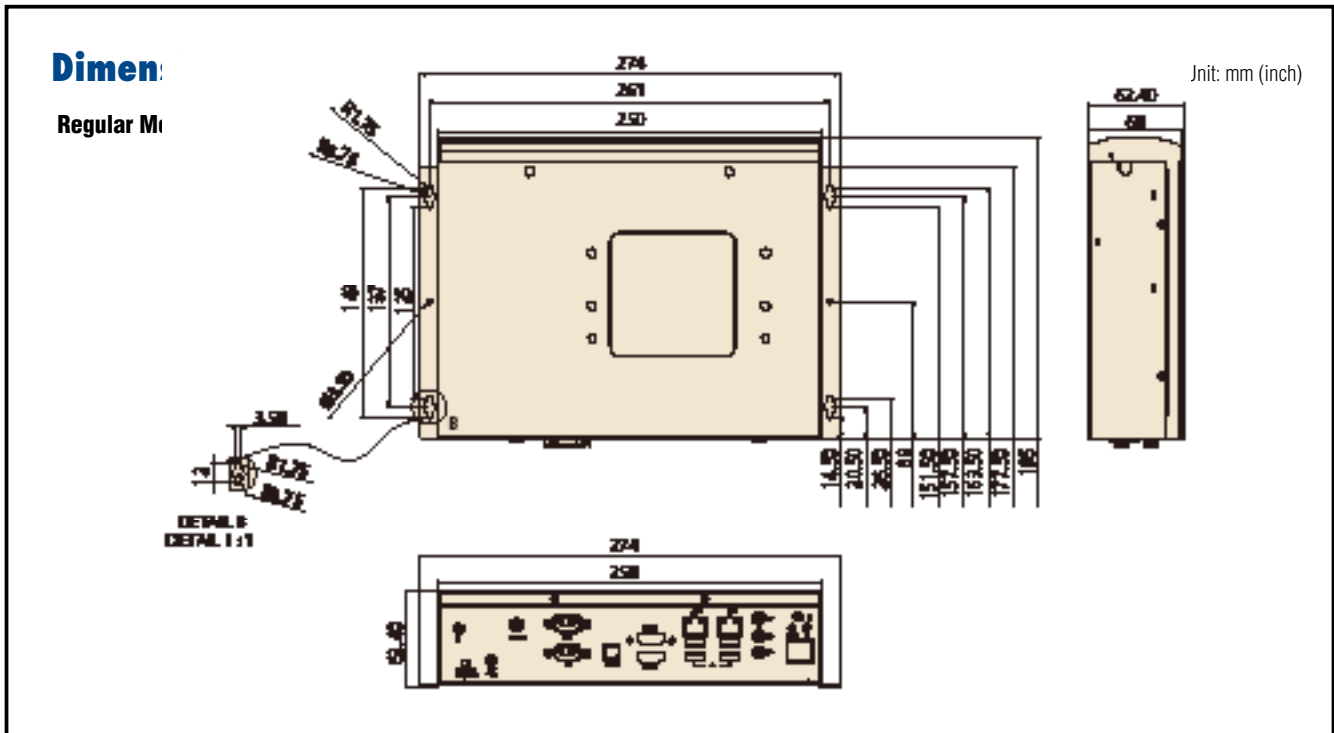
\*Playback is supported by software not provided by Advantech

**ADVANTECH**

**Embedded Signage Box**

All product specifications are subject to change without notice

Last updated : 15-Aug-2011



## Packing List

Part Number	Description
-	1 x ARK-DS350 Unit
-	1 x Driver/Utility CD/Manual
-	1 x User Manual (Simplified Chinese)
-	1 x China RoHS
-	1 x Adapter AC 100 ~ 240 V 90 W/19 V PFC
-	1 x Mounting plate set

## Ordering Information

Part Number	Description
ARK-DS350-U8B1E	ARK-DS350, AMD Athlon™ II XL V66C, VGA+ 2 HDMI, 2 GbE, 8 USB, 2 COM, Audio w/ 2 GB RAM+ 160 G HDD
ARK-DS350-U7B1E	ARK-DS350, AMD Sempron™ 140E, VGA+ 2 HDMI, 2 GbE, 8 USB, 2 COM, Audio w/ 2 GB RAM+ 160 G HDD
ARK-DS350-00B1E	ARK-DS350, barebone AMD 780E digital signage PC

## Power Cord & Specific Power Adaptor

Part Number	Description
1700001524	3-pin power cord (US)
170203183C	3-pin power cord (EU)
170203180A	3-pin power cord (UK)
1700008921	3-pin power cord (PSE for Japan)

## SUSI API functions



GPIO



SMBus



Hardware Monitor



I²C



Watchdog

\*Fan Speed Control in HW monitor is not supported, please follow system default setting.

## Embedded S/W

Part Number	Description
2070009891	XPE Image WES2009 ARK-DS350 B1 V4.0 ENG
2070010168	XPE WES2009 ARK-DS350 B1 V4.0 24MUI
2070009886	Win7 Embedded WES7E, ARK-DS350 V5.0 ENG

## Peripherals for Configuration

CPU	96MPAA-2.8G-2MAM3T	AMD ATHLON II XL V66C 2.8GHZ
	96MPAMS-27P-1MAM3	AMD SEMPRON 140E 2.7GHz
RAM	96SD3-2G1066NN-AP	2G SO-DDR3-1066 204PIN 128X8 ELP(G)
	96SD3-4G1066NN-TR	4G SO-DDR3-1066 204PIN 256X8 HYX(G)

## Accessories

Part Number	Description
AMO-WIFI01E	WIFI 802.11 b/g/n Mini PCIe module(w/ antenna)