

# SQF-P10

## Advantech Industrial CompactFlash



### Features

- Capacity 1 GB ~ 16 GB
- Supports SLC (single level cell) NAND Flash Memory
- Supports PIO Mode 6 / Multi Word DMA Mode 2 / Ultra DMA Mode 5
- Supports Security ID & S.M.A.R.T.



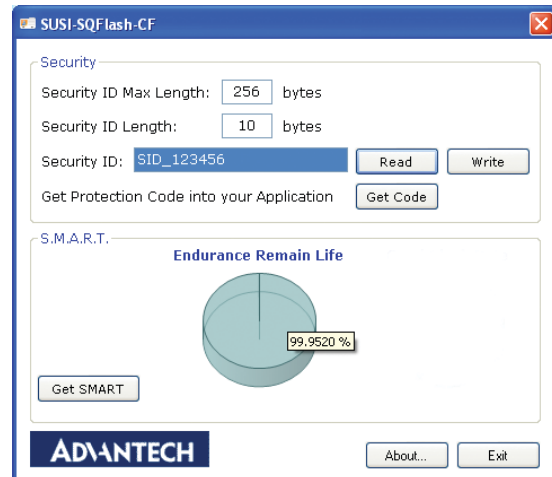
### Hardware Specifications

Capacity	1 G/ 2 G/ 4 G/ 8 G/ 16 GB
Compatibility	CF 3.0, PC Card, Socket's Services
Form Factor	CF Type-I
Voltage	3.3 V / 5.0 V
Data Transfer Mode	PIO Mode-6 MWDMA Mode-2 UDMA Mode-5
Sustained R/W Performance (*)	2 channel: 43/30 MB per second 1 channel: 22/15 MB per second
Operation Temperature	Commercial Grade: 0 to +70° C Extended Grade: -40 to +85° C
Host interface	8/16 bit access
ECC (BCH)	Correct up to 6/12 random bits/sector
MTBF	>1,000,000 hours
Vibration resistance	16.5 G
Shock resistance	1,100 G (0.5 msec)
Security Feature Set	Security Disable Password Security Erase Prepare Security Erase Unit Security Freeze Lock Security Set Password Security Unlock

(\*)The values are for reference only; they may change according to the flash memory used.

### Software Specifications

- Product key protected GUI Management Tool
- GUI Management Tool User Interface
- Encrypted Application Programming Interface (API) support
- Security ID Read/Write and protecting sample code generator
- Get S.M.A.R.T. attribute



### Ordering Information

Part No.	Product Description
SQF-P10S1-1G-CTE	Advantech SQFlash 1 CF NR, DMA (0 ~ 70° C)
SQF-P10S2-2G-CTE	Advantech SQFlash 2 G CF NR, DMA (0 ~ 70° C)
SQF-P10S2-4G-CTE	Advantech SQFlash 4 G CF NR, DMA (0 ~ 70° C)
SQF-P10S2-8G-CTE	Advantech SQFlash 8 G CF NR, DMA (0 ~ 70° C)
SQF-P10S2-16G-CTE	Advantech SQFlash 16 G CF NR, DMA (0 ~ 70° C)
SQF-P10S1-1G-ETE	Advantech SQFlash 1 G CF NR, DMA (-40 ~ 85° C)
SQF-P10S2-2G-ETE	Advantech SQFlash 2 G CF NR, DMA (-40 ~ 85° C)
SQF-P10S2-4G-ETE	Advantech SQFlash 4 G CF NR, DMA (-40 ~ 85° C)
SQF-P10S2-8G-ETE	Advantech SQFlash 8 G CF NR, DMA (-40 ~ 85° C)
SQF-P10S2-16G-ETE	Advantech SQFlash 16 G CF NR, DMA (-40 ~ 85° C)