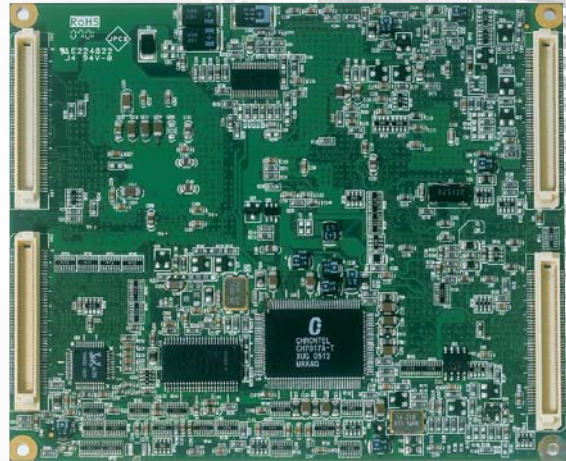
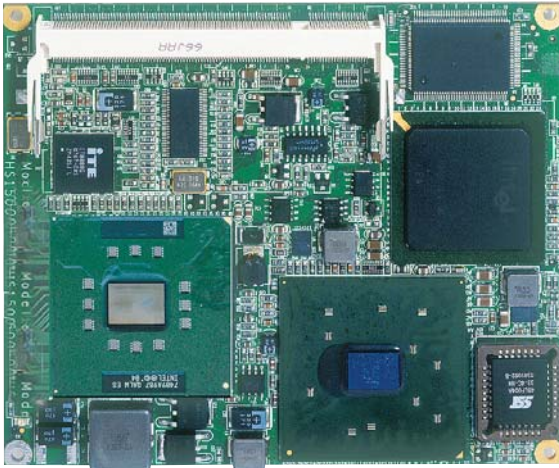


HS-1500M

ULV Intel® Celeron® M processor ETX Module
Provides 24-bit LVDS Panel, Intel® 82562 Ethernet



Features

- ULV Intel® Celeron® M processor 600MHz/512K, supports 400MHz FSB
- 1 x SO-DIMM up to 512MB DDR SDRAM
- Intel® 852GM/ICH4 system chipset
- Intel® 852GM integrated VGA for CRT & LVDS
- Intel® 10/100 Mbps ethernet
- AC'97 audio codec
- Supports 2 x COM, 4 x USB2.0, mini PCI slot
- Supports 24-bit LVDS, H/W Monitor function

System

- CPU**
ULV Intel® Celeron® M processor 600MHz/512K
- FSB**
400MHz FSB
- BIOS**
AMI PnP Flash BIOS
- System Chipset**
Intel® 852GM/ICH4
- I/O Chipset**
Winbond W83627HG-AW
- System Memory**
1 x 200-pin SO-DIMM socket DDR 266MHz up to 512MB
- Watchdog Timer**
Software programmable time-out intervals from 1~255 sec. or 1~255 min.
- H/W Status Monitor**
Monitoring temperatures, voltages, and cooling fan status
- Expansion Slot**
1 x Type I mini PCI slot
Wireless LAN module (option)
- Operating Temperature**
0~60 degrees C
- Operating Humidity**
0~95%, non-condensing
- Size (L x W)**
114 x 99.57 mm

I/O Interface

- MIO (connector on carrier board)**
2 x RS-232
4 x USB2.0
2 x IDE
1 x LPT
1 x PS/2 for KB
1 x PS/2 for MS

Display

- Chipset**
Intel® 852GM
- Display Memory**
8MB video memory
- LVDS**
24-bit single/dual-channel
- Resolution**
CRT Mode: 1600 x 1200

Audio

- Chipset**
RealTek ALC202A
- Audio Interface**
On carrier board

Ethernet

- Chipset**
Intel® 82562 10/100 Mbps LAN
- Ethernet Interface**
On carrier board

Ordering Guide

- HS-1500M/600MHz**
ULV Intel® Celeron® M processor 600MHz/512K ETX Module w/CRT, LAN, Audio
- HS-1500M/1GHz**
ULV Intel® Celeron® M processor 1GHz/512K ETX Module w/CRT, LAN, Audio
- EB-1500**
ETX Carrier Board w/DVI-I display x 4
- EB-1550**
ETX Carrier Board

- Accessory Options**
LVDS Cable, COM Cable, USB Cable

Panel PC

Bare Bone

SBC

Chassis

Power Supply

Backplane