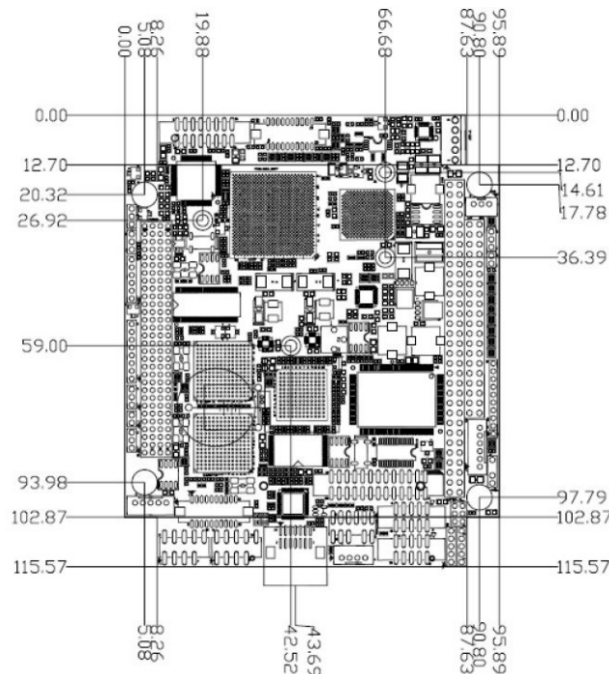
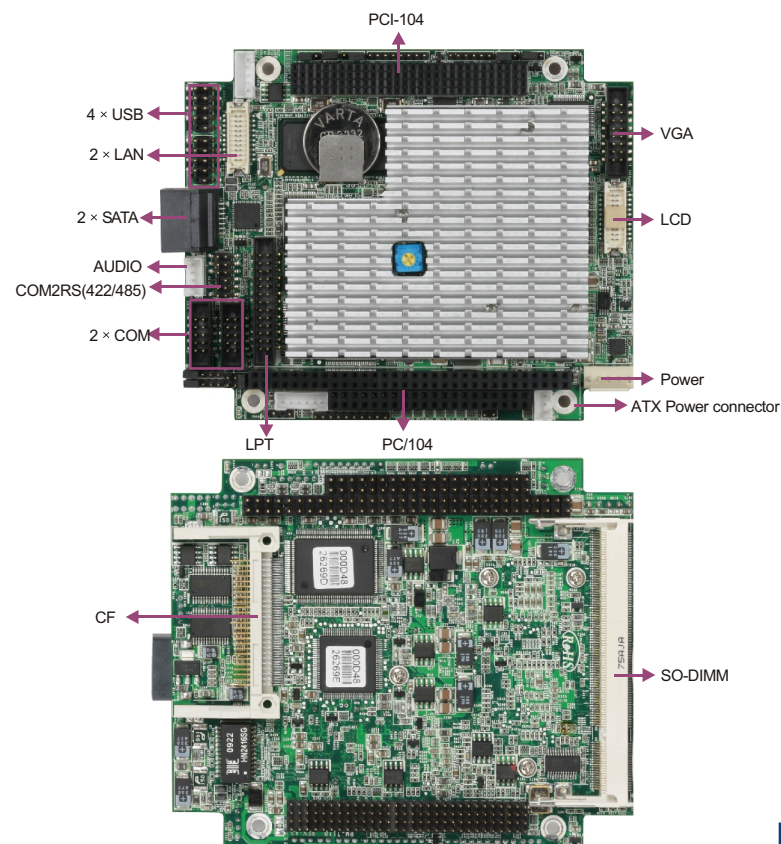


104-8811CLD2N

PC/104 SBC with Atom™ Z530 CPU /US15W/LCD/VGA/SSD/2LAN/COM



FEATURES

- Onboard Intel® Atom™ Z530 1.6GHz FSB 533MHz processor
- Supports 1 x 200-pin SO-DIMM, up to 2GB of DDR2 533/400MHz
- Supports 2 x 10/100M Ethernet interface
- Supports 4 x USB2.0, 2 x COM, 1 x PS/2, 2 x SATA, 2 x LAN

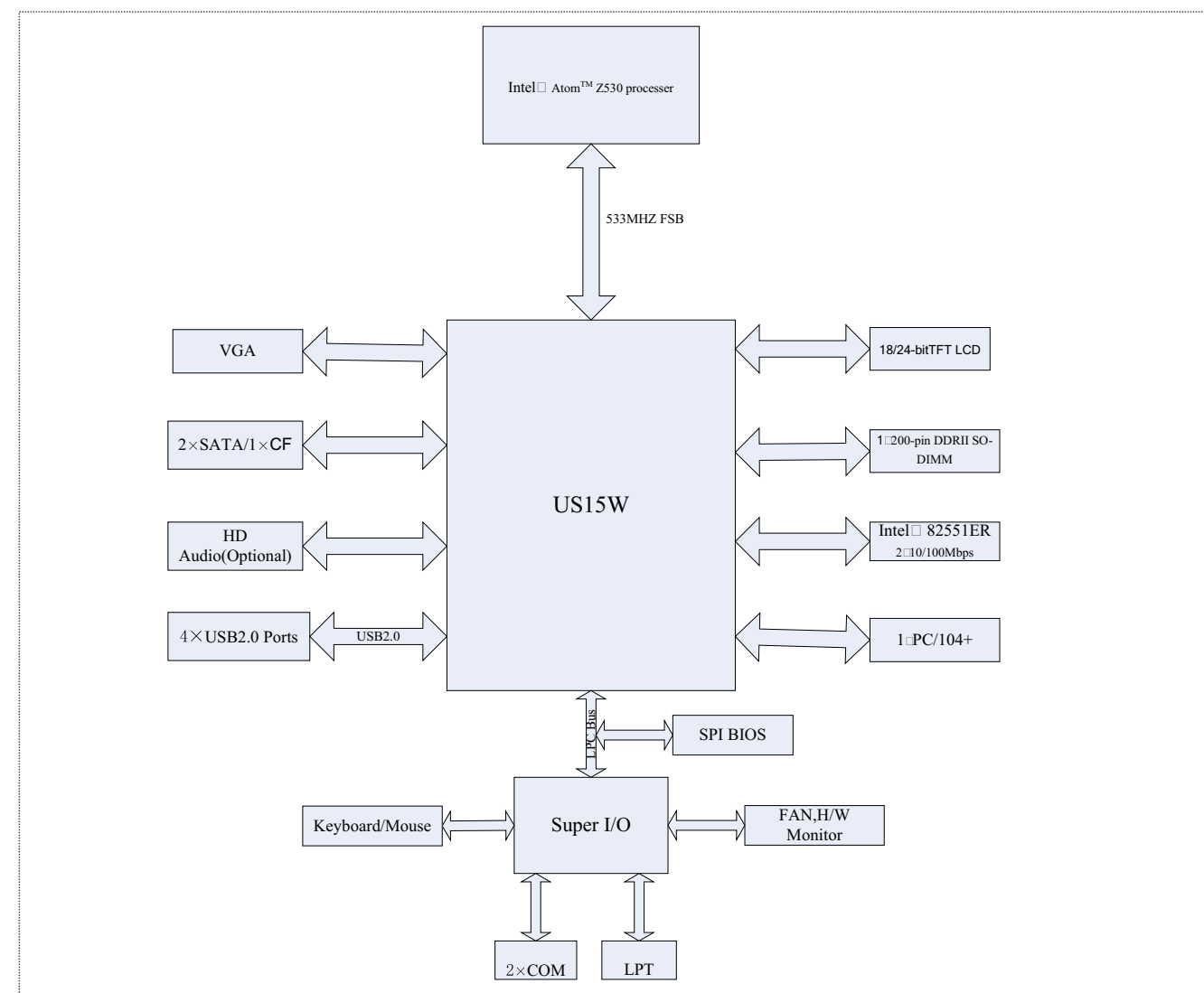


SPECIFICATIONS

System	
Processor	Onboard Intel® Atom™ Z530 1.6GHz FSB 533MHz processor
Chipset	Intel®US15W
Memory	Supports 1 x 200-pin SO-DIMM, up to 2GB of DDR2 533/400MHz
Hardware Monitor	Monitors system status, voltage, temperature and fan speed
Watchdog Timer	1~255 sec./min. timer system reset or interrupt, setup by software
Expansion Interface	PC/104+
Storage	
IDE	N/A
Serial ATA	2 x Serial ATA 300MB/s interface
Floppy	N/A
CF	1 x CompactFlash Type I/II socket
DOC/DOM	N/A
I/O Interface	
USB	4 x USB2.0 Ports
Serial Port	1 x RS232, 1 x RS232/422/485(COM1/COM2 voltage adjustable)
Parallel Port	1 x LPT
IrDA	1 x IrDA
GPIO	8-bit GPIO
Audio(optional)	HD Audio(optional R139A daughter board)
Keyboard/Mouse	1 x PS/2

Display	
Chipset	Intel® System Controller Hub US15W
Memory	Up to 256MB shared system memory
Resolution	VGA mode up to 2048 x 1536 x 32bpp@60Hz LCD mode up to 1027 x 768 x 16bpp@60Hz
Dual Display	VGA+18/24-bitTFT LCD
Ethernet	
Chipset	Intel®8251ER
Speed	10/100Mbps
Connector	2 x RJ45
Mechanical and Environmental	
Dimensions	96mm x 116mm
Operating Temperature	0°C ~ 60°C
Storage Temperature	-20°C ~ 85°C
Operating Humidity	10%~85%, non-condensing
Power	
Power Supply	Supports AT or ATX power supply
Power consumption	8-12W
Operating System	
Windows OS	Windows 2000/ Windows XP
Embedded OS	Linux

Board Diagram



Available Accessories

Name	Description	Qty
LAN cable/RoHS	Dual LAN cable/104-8811CLD2N	1
Dual RJ45 Card	Dual RJ45 Connector adaptor card	1
ATX Power cable/RoHS	ATX Power cable/104-8811CLD2N	1
Y-cable for keyboard and mouse/RoHS	One 6-pin port to two PS/2 ports	1
VGA cable/RoHS	DB15 connector to 2x8-pin connector	1
Serial port cable/RoHS	DB9 connector to 2x5 Pin connector (2.0mm pitch)	1
Dual USB ports /RoHS	Two USB ports to one 2x5 Pin connector (2.0mm pitch)	1
Driver CD/Manual/RoHS	104-8811CLD2N	1

Ordering Information

Part Number	Description
104-8811CLD2N-Z530	PC/104 SBC with Atom™ Z530 1.6GHz 533MHz FSB/US15W/VGA+LCD/4USB/2COM/2LAN
104-8811CLD2N-Z510	PC/104 SBC with Atom™ Z510 1.1GHz 400MHz FSB/US15W/VGA+LCD/4USB/2COM/2LAN