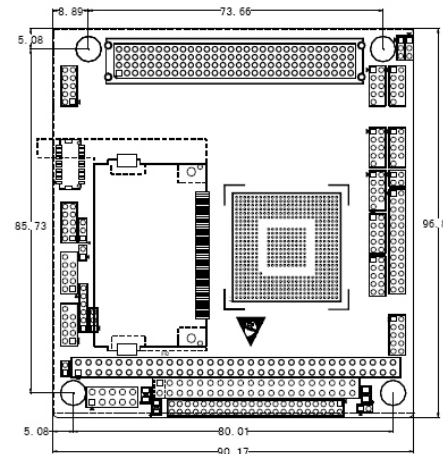
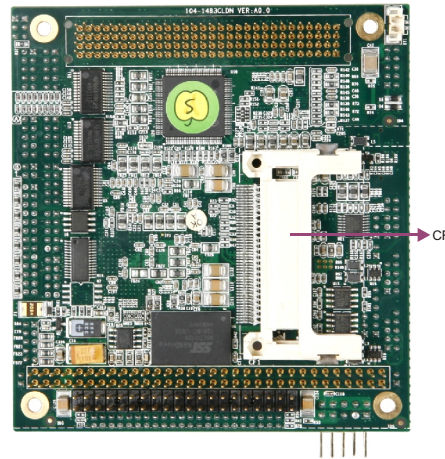
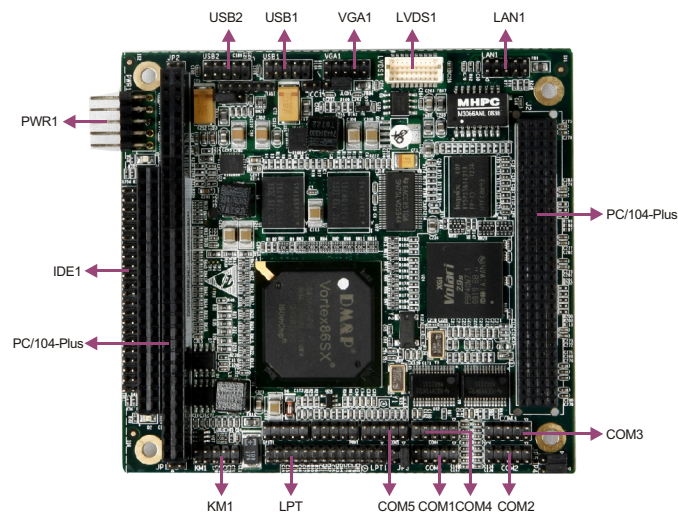


# 104-1483CLDN



PC/104 SBC with CPU/Memory/LVDS/VGA/CF/ LAN



## Features

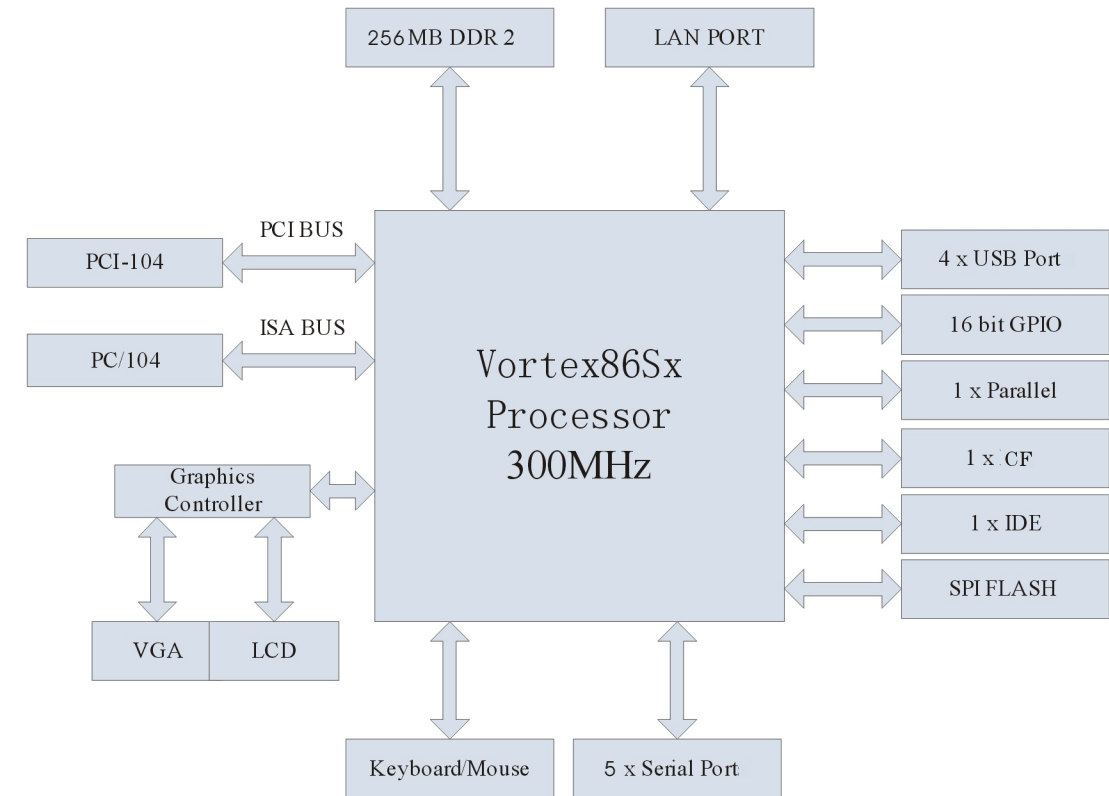
- Onboard Vortex A9100 300MHz CPU
- Onboard 256MB DDR2 memory
- Supports 1 x 10/100Mbps Ethernet interface
- Supports 4 x USB2.0, 1 x LPT, 5 x COM, 1 x PS/2, 1 x CF
- Supports VGA/LVDS dual-display

## Specifications

System	
Processor	Onboard Vortex A9100 300MHz CPU
Chipset	Vortex86SX SoC
Memory	Onboard 256MB DDR2 memory
Hardware Monitor	N/A
Watchdog Timer	2 255 seconds or 2 255 minutes
Expansion Interface	PC/104-Plus
Storage	
IDE	1 x Ultra-DMA 100 interface
Serial ATA	N/A
Floppy	N/A
CF	1 x CF
DOC/DOM	N/A
I/O Interface	
USB	4 x USB2.0 port
Serial Port	5 x RS-232 (1 x RS-232/422/485)
Parallel Port	1 x LPT
IrDA	N/A
GPIO	8 x GPIO
Audio	N/A
Keyboard/Mouse	1 x PS/2

Display	
Chipset	Z9S
Memory	32MB
Dual Display	TTL/DSTN/STN/LCD display
Ethernet	
Chipset	Vortex86SX SoC integrated
Speed	10/100Mbps
Connector	1 x RJ45
Mechanical and Environmental	
Dimensions	96mm x 90mm
Operating Temperature	-40°C~85°C
Storage Temperature	N/A
Operating Humidity	5%-90%, non-condensing
Power	
Power Supply	AT Power, single 5V power supply
Power Consumption	4W
Operating System	
Windows OS	N/A
Embedded OS	Linux

## Board Diagram



## Available Accessories

Part Number	Name	Description	Qty.
2360-011231	Serial port cable/RoHS	DB9 connector to 10 Pin (2x5) connector (2.0mm pitch), length: 300mm/RoHS	5
0090-000200	LED panel	P10-RJ45LED	1
1090-004410	LED panel(PCBA)	P10-RJ45LED	1
2331-004681	Pin header/RoHS	2x5 Pin2.0mm pitch	1
2331-006301	Network socket/RoHS	Straight pin RJ45-8P with indicator lamp/without spring piece	1
1090-500320	LED panel/related data	P10-RJ45LED	1
2360-012771	Serial port cable/RoHS	2x5 Pin (2.0mm pitch) to 2x5 Pin (2.0mm) connector, length: 300mm	1
2360-017481	Multi-functional converter cable/RoHS	Buzzer reset button dual PS/2 connector to 2x5 Pin 2.0mm pitch female connector, length: 250mm	1
2360-008781	HDD flat cable/RoHS	40 Pin to 44 Pin (2.0mm pitch), length: 550mm/RoHS	1
2360-014781	Dual USB ports with bracket/RoHS	Two USB ports to one 10 Pin (2x5) connector (2.0mm pitch), length: 550mm/RoHS	2
2360-012641	VGA cable/RoHS	2x5 Pin connector (2.0mm pitch) to 15P female right angle connector, length: 300mm/RoHS	1
2360-012651	DC Power supply cable/RoHS	2x5 Pin connector to one male power 4 Pin (5.08mm pitch), length: 250mm/RoHS	1
2360-011221	Parallel port cable/RoHS	DB25 connector to 26 Pin (2x13) connector (2.0mm pitch), length: 300mm/RoHS	1
2330-000011	Jumper/RoHS	Pitch: 2.0mm, black, sealed tail	2
—	Setup Guide/RoHS	AMI/BIOS Setup Guide (for Core/8)	1
—	User Manual/Chinese and English/RoHS	104-1483CLDN	1
—	Driver CD/Protective film/Chinese and English/RoHS	104-1483CLDN	1

## Ordering Information

Part Number	Model Number	Description
0030-012330	104-1483CLDN	(YF)Motherboard