

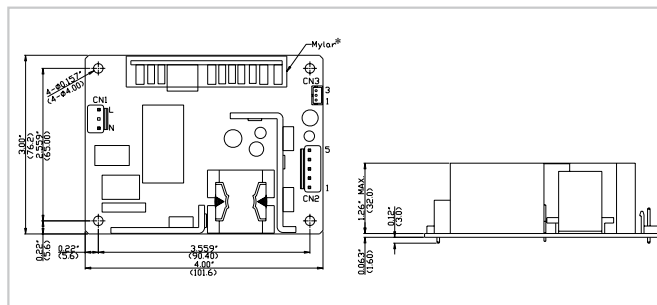
# ACE-A406A

60 W AC-DC ATX Open Frame Power Supply



Input Type	90 ~ 264 VAC Full Range			
Input Frequency	47~63Hz			
Input Current	1.6A (RMS) Max.			
Inrush Current	60A/230VAC Max.			
Output Voltage	Voltage	Min.load	Max.load	Ripple & Noise
	+12V	0.5A	4.5A	120mV
	+5V	0A	1A	50mV
	+5Vsb	0A	1A	50mV
Efficiency	75%			
Temperature	Operating : 0°C ~ 50°C, Storage : -30°C~ 70°C			
MTBF(hrs)	100,000			
Output Connector	Optional cable			
Dimensions	76.2(W)x101.6(H)x32(D)mm			

## Dimensions



## Ordering Information

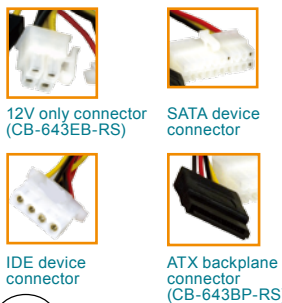
Part No.	Description
ACE-A406A-RS	60W AC-DC ATX open frame power supply

<b>Optional 1</b> <p>FUSE</p>	<b>AC Input Solution</b> <b>PN: CB-704EC-RS</b> 20 cm AC input cable with fuse
<b>Optional 2</b> <p>5 Pins connector to DC/ DC Power Modules CN4                  12V only connector for NANO Series SBC                  Cable for SATA HDD</p>	<b>PN: CB-5PSBC-RS</b> Std 4 Pins 12V, 5V I/O Connector for WAFER, NOVA, Enano Series SBC or I/O devices

# Open Frame AC Input AT Type

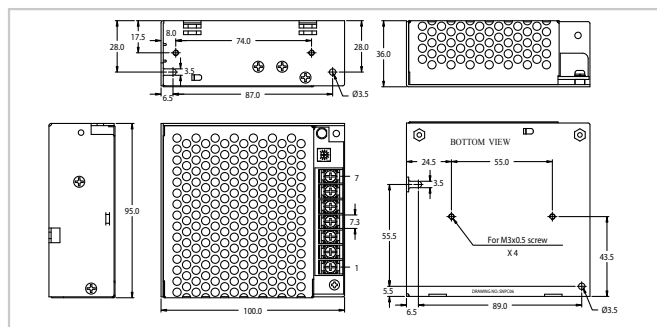
# ACE-663A

60 W AC Input AT Power Supply



Input Type	85 ~ 264 VAC Full Range			
Input Frequency	47 Hz~ 63 Hz			
Input Current	1.5 A (RMS)@115V, 0.8 A (RMS)@230V			
Inrush Current	30 A Max for 115VAC, 60 A Max for 230VAC			
Output Voltage	Voltage	Min. load	Max. load	Ripple & Noise
	+5 V	0 A	6 A	50 mV
	+12 V	0 A	2 A	120 mV
Watt	60 W			
Hold-up time	14 ms Min.			
Efficiency	81%			
MTBF	100,000 hours			
Temperature	Operation: -20°C~70°C, Storage: -40°C~75°C			
Dimensions	95 x 100 x 36 (mm), 3.74 x 3.93 x 1.41 (inch)			
Outline Connector	Optional Cable			

## Dimensions



## Ordering Information

Part No.	Description
ACE-663A-RS	60W AC Input AT Power Supply, RoHS

<b>Optional 1</b> <p>FUSE</p>	<b>AC Input Solution</b> <b>PN: CB-643EC-RS</b> 20 cm AC input cable with fuse
<b>Optional 2</b> 	<b>Embedded Solution</b> <b>PN: CB-643EB-RS</b> 30 cm DC cable to CPU card, with 20-pin ATX, HDD and SATA connectors
<b>Optional 3</b> 	<b>ATX Backplane Solution</b> <b>PN: CB-643BP-RS</b> 30 cm DC cable to backplane, with 20-pin ATX, HDD and SATA connectors
<b>Optional 4</b> 	<b>AT P8P9 Backplane Solution</b> <b>PN: CB-643P8P9-RS</b> 30 cm DC cable AT power to P8P9, HDD and SATA connectors