

# » CP3923 «



## Up to 16-Port Layer2/Layer3 3U CompactPCI Switch

- » Fully managed layer2 and layer3 switching and routing
- » Leading edge technology based on BCM56226
- » Front panel design with RJ45 or M12 connectors
- » Rugged air-cooled or conductive-cooled versions available

# CP3923

## Up to 16-Port Layer2/Layer3 3U CompactPCI Switch

Welcome the latest member of the 3U CompactPCI switch family – the CP3923.

The CP3923 is a fully managed layer 2/3 Gigabit Ethernet switch offering IPv4/IPv6\* routing and full management capabilities. It supports a powerful set of CLI, Telnet, Web and SNMP management interfaces to configure the entire set of protocols and parameters including Layer 2 and Layer 3 (IPv4/IPv6\*) protocols, Multicasting, QoS and Security. On top of that, the CP3923 maximizes the reliability of rugged COTS applications by supporting Intelligent Platform Management (IPMI) and hot swap capabilities.

### » Unique Versatility

Eight GbE ports to the rear and up to eight GbE ports to the front ensure highest connectivity capabilities. The CP3923 is available with three different front I/O versions:

Either with eight GbE ports via RJ45 (CP3923-8C) or for mobile- and transportation-oriented applications with four (CP3923-4M) or eight (CP3923-8M) Fast Ethernet ports via M12-D connectors.

For applications requiring utmost mechanical stability and reliability the CP3923 is also available as rugged, conductive-cooled version (CP3923-RC).

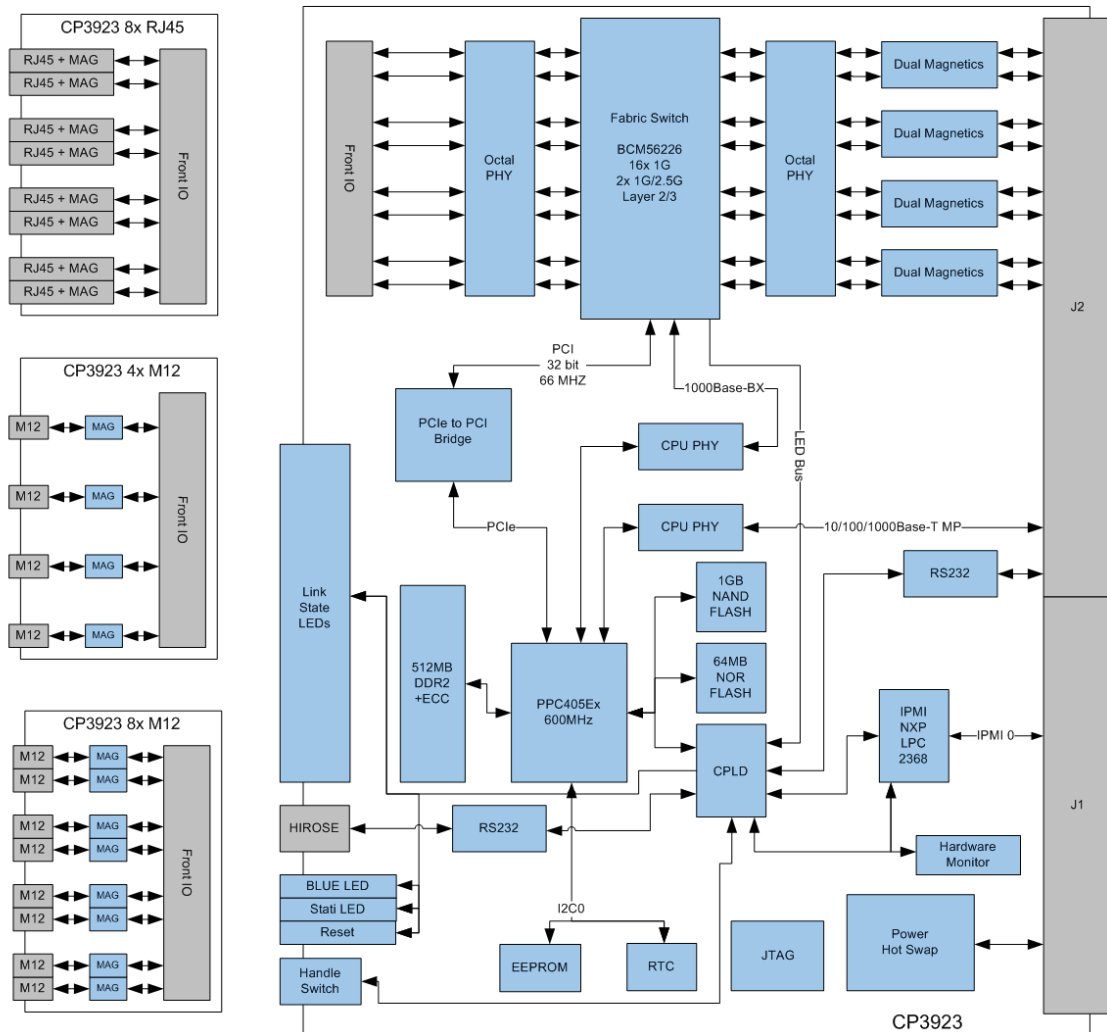
### » Robust and Reliable

The careful design and selection of high temperature resistant components together with the elaborate heat sink construction ensures high product reliability. Designed with soldered components the CP3923 is able to handle the toughest environmental conditions. With respect to the transportation market the CP3923-4M and the CP3923-8M are fully EN50155 compliant. The CP3923-RC fulfills all requirements of the VITA 47 environmental class ECC4.

### » Long-Term Availability

Based on chosen components from embedded roadmaps, the CP3923 ensures long-term availability and therefore eliminates the risk of unplanned design changes and unexpected application modification.

\*IPv6 support optional



## Technical Information

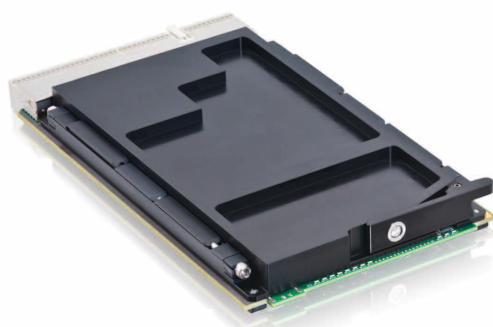
<b>Controller and Switch</b>	Broadcom BCM56226 Ethernet switch PowerPC® 405EX, 32-bit, RISC processor core operating up to 600 MHz NXP LPC2368 32-bit microcontroller, for IPMI 512MB DDR2 RAM 200 MHz 1GB NAND Flash for file storage
<b>Front Interfaces on Standard Boards</b>	
Common	1x RS232 management port via Hirose connector Reset button Status LEDs, 1x per port Hot swap LED
CP3923-8C	8x 10/100/1000Base-T ports via RJ45
CP3923-4M	4x 10/100Base-T Ports via M12
CP3923-8M	8x 10/100Base-T Ports via M12
<b>Rear I/O via J2</b>	The CP3923 supports: » Eight Gigabit Ethernet ports » One 10/100/1000Base-T management port » One RS232 management port
<b>CompactPCI Bus Interface</b>	PICMG 2.0 Rev. 3.0 compatible, universal 5V and 3.3V PCI signalling voltage supported
<b>Hot Swap</b>	The board supports full hot swap capability as required by PICMG 2.1 R2.0. It can be removed or inserted in a powered slot. Please refer to the PICMG 2.1 R2.0 specification for additional details.
<b>Compliance</b>	CompactPCI® Core Specification PICMG 2.0 Rev. 3.0 CompactPCI® Hot Swap Specification PICMG 2.1 R2.0 CompactPCI® System Management Specification PICMG® 2.9 R1.0 Intelligent Platform Management Interface Specification v1.5 IEEE 802.3, 2000 ANSI/Vita 47-2005  Designed to meet or exceed: » Safety: UL 60950-1, CSA 22.2 No 60950-1, EN60950-1 » EMI/EMC: EN 55022 / EN 55024, EN 50081-1 / EN 61000-6-2 » EN50155 (only CP3923-4M and CP3923-8M)
<b>Software</b>	
Management	Management via SNMP, Telnet, CLI » In-band » Out-of-band via Ethernet or RS232 IPMI v1.5 Reliable software, field upgradable Dual boot images with roll-back capabilities Advanced management monitoring features
<b>Switching and Routing</b>	Ethernet Bridging: » Static and dynamic link aggregation, Classic, rapid and multiple spanning tree algorithms, Quality Of Service, Full Duplex operation and flow control, Layer 2 multicast services, VLAN support, IGMP and MLP snooping, Access Control Lists IP Routing:(*) » IPv4 Forwarding, ARP, ICMP, static routing, OSPF and RIP routing, Virtual router redundancy protocol (VRRP), ECMP Equal Cost Multipath routing Multicast: » IP Multicasting, IGMPv2 /v3, PIM-DM/PM, DVMRP, MLD v1/v2 Services: » SNMP client, DHCP server, Event Management, POST, SNMP, Support for multiple configurations, TFTP server, Power on and diagnostic tests  (* )IPv6 support optional
<b>General</b>	
Dimensions	100 x 160mm, 3U
Weight	CP3923-8C: 420g CP3923-4M: 410g CP3923-8M: 500g CP3923-RC: 390g
MTBF	CP3923-8C: 244,715 h acc. to Telcordia Issue 1, Method I Case 3, Ground Benign, controlled at 40°C CP3923-4M: 252,158 h acc. to Telcordia Issue 1, Method I Case 3, Ground Benign, controlled at 40°C CP3923-8M: 246,110 h acc. to Telcordia Issue 1, Method I Case 3, Ground Benign, controlled at 40°C CP3923-RC: 262,140 h acc. to Telcordia Issue 1, Method I Case 3, Ground Benign, controlled at 40°C
<b>Power Consumption</b>	typ. 20 W
<b>Environmental</b>	
Operating Temp.	CP3923-8C: -40°C to +85°C, forced system airflow required CP3923-4M/-8M: -40°C to +70°C, EN50155 TX CP3923-RC: -40°C to +85°C, conduction-cooled
Storage Temp.	-50°C to +105°C
Climatic Humidity	93% RH at 40°C, non-condensing (acc. to IEC 60068-2-78)

## Ordering Information

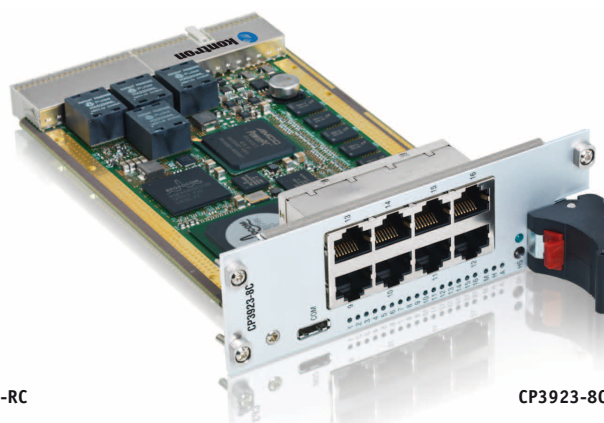
Product	Description
<b>Switch</b>	
<b>CP3923-8C</b>	3U, 8HP, 8x GbE front (RJ45), 8x GbE rear, RS232 and GbE management ports
<b>CP3923-4M</b>	3U, 8HP, 4x Fast Ethernet front (M12), 8x GbE rear, RS232 and GbE management ports
<b>CP3923-8M</b>	3U, 12HP, 8x Fast Ethernet front (M12), 8x GbE rear, RS232 and GbE management ports
<b>CP3923-RC</b>	3U, 4HP, conductive-cooled, 8x GbE rear, RS232 and GbE management ports, with coating
<b>Rear Transition Module</b>	
<b>CP-RI03-923-8C</b>	8HP rear I/O module, 8x GbE (RJ45), RS232 and GbE management ports (RJ45)

Please contact your local sales representative for further assistance concerning configuration options.

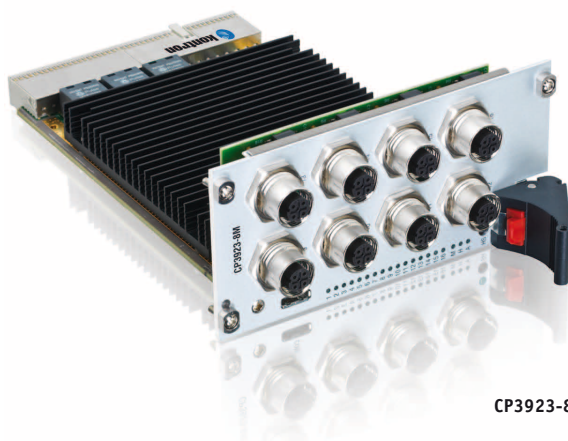
## PRODUCTS



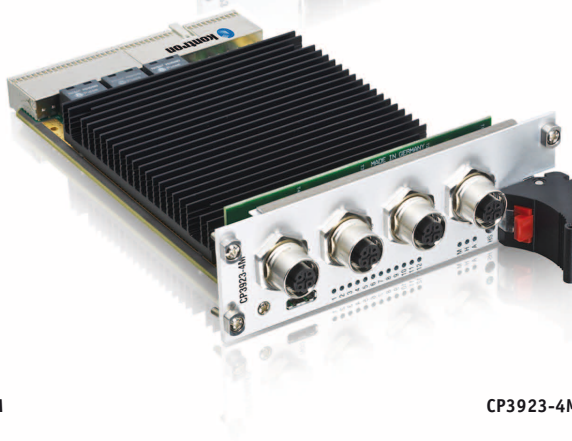
CP3923-RC



CP3923-8C



CP3923-8M



CP3923-4M

## CORPORATE OFFICES

### Europe, Middle East & Africa

Oskar-von-Miller-Str. 1  
85386 Eching/Munich  
Germany  
Tel.: +49 (0)8165/ 77 777  
Fax: +49 (0)8165/ 77 279  
info@kontron.com

### North America

14118 Stowe Drive  
Poway, CA 92064-7147  
USA  
Tel.: +1 888 294 4558  
Fax: +1 858 677 0898  
info@us.kontron.com

### Asia Pacific

17 Building, Block #1, ABP.  
188 Southern West 4th Ring Road  
Beijing 100070, P.R.China  
Tel.: + 86 10 63751188  
Fax: + 86 10 83682438  
info@kontron.cn

