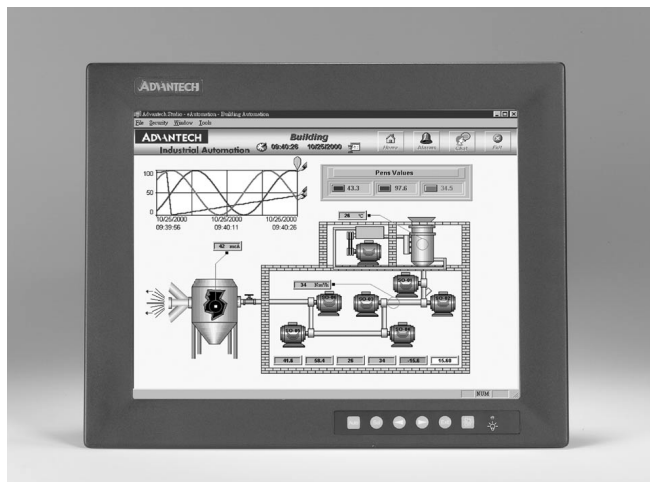


# FPM-2150

## Industrial 15" Flat Panel Monitor with Direct-VGA Port



### Features

- 15" XGA TFT LCD with resolution up to 1024 x 768
- Multi-scan function supports XGA, SVGA, VGA
- Front accessible display on/off switch
- Auto-recognition of input signal
- Supports panel, rack, wall mount, desktop and VESA arm
- NEMA4/IP65 compliant Al-Mg front panel

### Introduction

The FPM-2150G is an industrial-grade 15" TFT LCD flat panel monitor with an Al-Mg front panel a modern appearance, and is one of the most competitively priced 15" LCD monitors on the market. The FPM-2150G is also extremely light and thin. In addition, it provides many industrial-grade features such as an NEMA4/IP65 panel, steel chassis, VESA mounting flexibility and more. The FPM-2150G is especially suitable for bundling with industrial PCs such as the IPC-610 or IPC-6806. This combination makes your system extremely reliable and tough, ready to operate in a variety of industrial applications.

### Specifications

- **Display Interface** RGB (VGA)
- **Control** OSD (on screen display) control pads on the front panel
- **Front Panel** Al-Mg, NEMA4/IP65 compliant
- **Mounting** Panel, rack, wall mount, desktop and VESA arm
- **Dimensions (W x H x D)** 383 x 307 x 48 mm (15" x 12" x 1.9")
- **Gross Weight** 4.5 kgs (9.9 lbs)
- **Power** External 48 W power adapter, AC 100 V ~ 230 V input, +12 V @ 4 A output
- **Operating Temperature** 0 ~ 50° C (32 ~ 122° F)
- **Storage Temperature** -20 ~ 60° C (-4 ~ 140° F)
- **Storage Humidity** 5 ~ 95 % non-condensing
- **Vibration (operating)** 5 ~ 17 Hz, double-amplitude displacement  
17 ~ 500 Hz, 1.0 G peak to peak
- **CE, FCC, BSMI, CCC compliant**

#### Touchscreen (Optional)

- **Type** 8 wire, analog resistive
- **Resolution** Continuous
- **Light Transmission** 75%
- **Controller** RS-232 interface
- **Power Consumption** +5 V @ 200 mA
- **OS support** Windows 2000/XP
- **Lifespan** 100 million touches

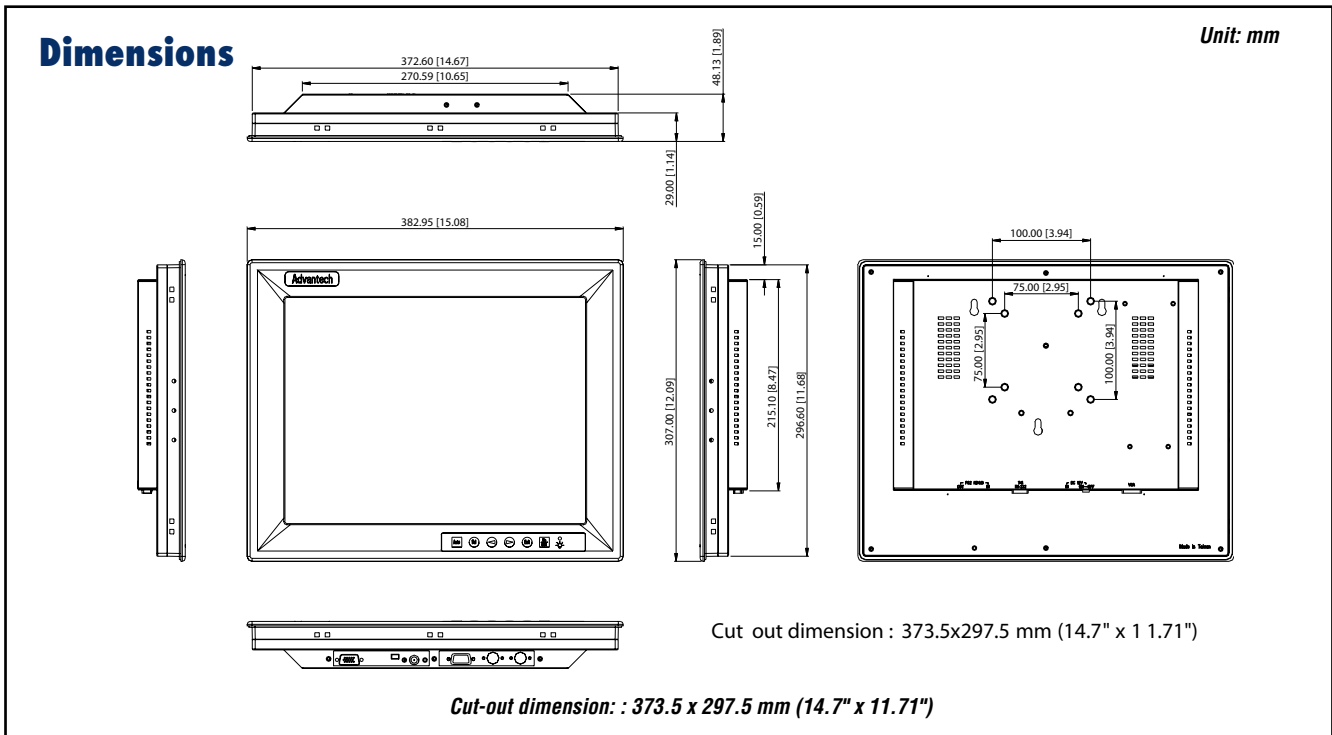
#### LCD Display

- **Display Type** XGA TFT LCD
- **Display Size** 15"
- **Max. Colors** 262 K
- **Max. Resolution** 1024 x 768
- **View Angle** 120° (H), 100° (V)
- **Luminance** 250 cd/m<sup>2</sup>
- **Storage Temperature** -20 ~ 60° C (-4 ~ 140° F)
- **Operating Temperature** 0 ~ 50° C (32 ~ 122° F)
- **Backlight Lifetime** 30,000 hrs
- **Contrast Ratio** 400 : 1

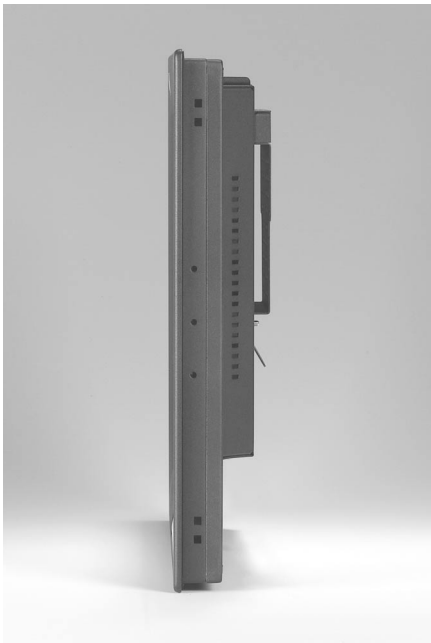
### Ordering Information

- **FPM-2150G** Industrial slim type 15" TFT LCD with direct VGA port, black
- **FPM-2150G-R** Industrial slim type 15" TFT LCD with direct VGA, resistive touch screen, black
- **1700155000** 5 M VGA cable for FPM-series
- **9689000355** RS-232/485 converter for T/S (USA)
- **9689000356** RS-232/485 converter for T/S (UK)
- **9689000357** RS-232/485 converter for T/S (FR)
- **1700090001** 4.5 M cable for T/S
- **1700090002** 3 M cable for T/S

- 1 IPC & AWS
- 2 TPC
- 3 FPM
- 4 ATM
- 5 DA&C
- 6 cPCI
- 7 ADAM-3000
- 8 eConnectivity
- 9 ICOM
- 10 Software
- 11 UNO-2000/3000
- 12 VBOX
- 13 ADAM-4000
- 14 ADAM-5000
- 15 ADAM-6000
- 16 ADAM-8000



## Side View



## Feature Details

### Commercial price but industrial-grade

When users want a stable system, they always search for industrial grade PCs to guarantee reliability. Many times they also want to buy an industrial-grade monitor to make the system more stable. However, the traditional high cost of these monitors has always been a concern. The FPM-2150G is specially designed to answer these needs. Although attractively priced, the FPM-2150G still provides many industrial-grade features expected by this market.

### Thin and light design

Compared to other industrial LCD monitors, the FPM-2150G focuses on reducing overall size, thickness and weight. This gives the FPM-2150G a more attractive and functional appearance while increasing ease of integration and installation. The thickness of FPM-2150G is only 48 mm and the weight is 4.5 kg.

### Industrial-grade functions

The chassis of the FPM-2150G is made of steel, and the front panel is of Al-Mg that is NEMA4/IP65 compliant and offers an attractive silver finish by request. The FPM-2150G offers an optional capacitive touchscreen and features Direct-VGA signal transmission to allow data viewing up to 50 m away. In addition, the FPM-2150G also provides a PS/2 port to let customers operate a keyboard/mouse from the front panel. The convenient front On-Screen-Display function let users adjust the image easily.