

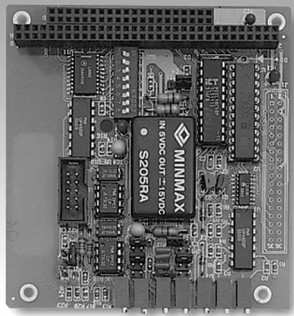
# PCM-3712

# PCM-3718H/HG

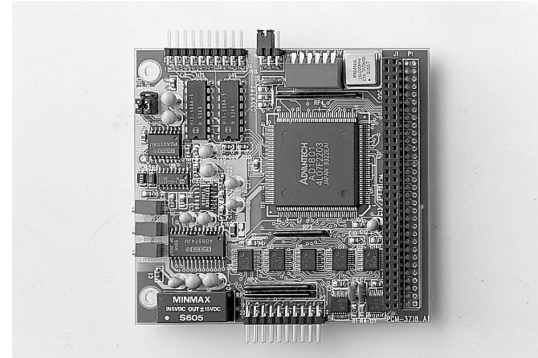
2-ch. Analog Output Module

12-bit Multifunction Module  
with Programmable Gain

NEW



PCM-3712



PCM-3718H/HG



## Features

- 2 channels analog output module
- 0 to 5 V, 0 to 10 V, -2.5 V to +2.5 V, -5 V to +5 V, -10 V to +10 V, or 4 to 20 mA output range
- 12-bit resolution

## Specifications

- Output of Channels** 2
- Voltage Range Unipolar** 0 to 5 V, 0 to 10 V
- Bipolar**  $\pm 2.5$  V,  $\pm 5$  V,  $\pm 10$  V
- Current Range** 4 ~ 20 mA
- Output Current Range**  $\pm 5$  mA
- Impedance** 0.1 max./0.02 typ.
- Resolution** 12-bit
- Nonlinearity**  $\pm 1$  LSB
- Differential Nonlinearity**  $\pm 1/2$  LSB
- System Accuracy**  $\pm 0.025\%$  FSR (Voltage)  
 $\pm 0.05\%$  FSR (Current)
- Dynamic Performance** 5 V step: 16  $\mu$ s  
0.3V/ $\mu$ s typ. (Voltage)  
1.2mA/ $\mu$ s (Current)
- Settling Time to 1/2 LSB** 10 V step: 33  $\mu$ s
- Slew Rate** 0.3 V/ $\mu$ s typ. (Voltage)  
1.2 mA/ $\mu$ s (Current)
- D/A Converter Single Channel** 33 KHz bit resolution

## Ordering Information

- PCM-3712** 2-channel analog output module
- ADAM-3909** DB-9 cable wiring for DIN-rail mounting

## Features

- 16 single-ended or 8 differential analog inputs
- 12-bit A/D converter, up to 100 KHz sampling rate with DMA transfer
- Two 8-bit digital input/output TTL level channels

## Specifications

### Analog Input

- Channels** 16 single-ended or 8 differential inputs
- Resolution** 12 bits
- Input Range** Bipolar:  $\pm 10$ ,  $\pm 5$ ,  $\pm 2.5$ ,  $\pm 1.25$ ,  $\pm 0.625$   
Unipolar (PCM-3718H): 0 ~ 10, 0 ~ 5, 0 ~ 2.5, 0 ~ 1.25
- Input Range** Bipolar:  $\pm 10$ ,  $\pm 5$ ,  $\pm 1$ ,  $\pm 0.5$ ,  $\pm 0.1$ ,  $\pm 0.05$ ,  $\pm 0.01$ ,  $\pm 0.005$   
Unipolar (PCM-3718HG): 0 ~ 10, 0 ~ 1, 0 ~, 0 ~ 0.01

### Digital input/output

- Channels** two 8-bit TTL-level Digital I/O channels
- Input Voltage** Logic 0: 0.8 V max.  
Logic 1: 2.0 V min.
- Output Voltage** Logic 0: 0.33 V max. @ 6mA (sink)  
Logic 1: 3.84 V min. @ 6mA (source)
- Power Requirements** +5 V,  $\pm 5\%$  tolerance on power supply
- Size/Weight** 96 x 90 mm (3.8" x 3.5"), 0.084 kg (0.185 lb)
- Temperature** Operating: 0 ~ 60° C (32 ~ 140° F)  
Storage: -40 ~ 85° C (-40 ~ 185° F)
- Operating Humidity** 0% ~ 90% relative humidity, non-condensing

## Ordering Information

- PCM-3718H/3718HG** 12-bit multifunction module with programmable gain (cable not included)
- ADAM-3920** 20-pin flat cable wiring terminal for DIN-Rail mounting
- PCLD-780** Screw-terminal board for 20-pin flat cable
- PCL-10120-1** 20-pin flat cable, 1 m
- PCL-10120-2** 20-pin flat cable, 2 m

1

IPPC & AWS

2

TPC

3

FPM

4

ATM

5

DA&C

6

cPCI

7

ADAM-3000

8

eConnectivity

9

ICOM

10

Software

11

UNO-2000/3000

12

VBOX

13

ADAM-4000

14

ADAM-5000

15

ADAM-6000

16

ADAM-8000