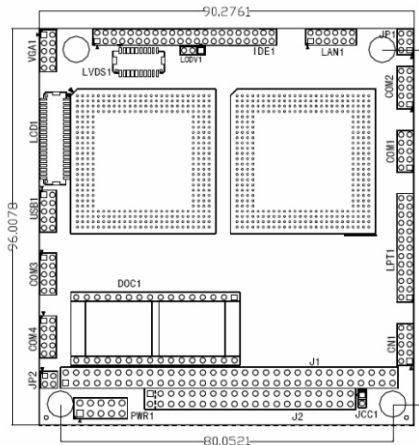
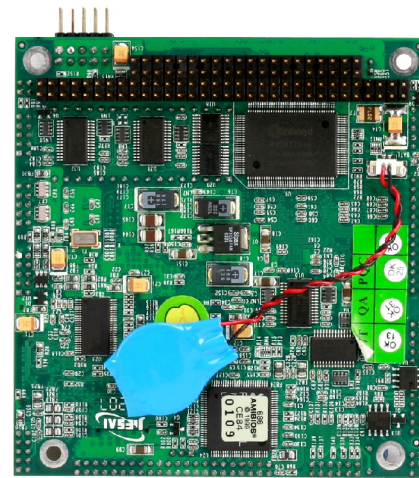
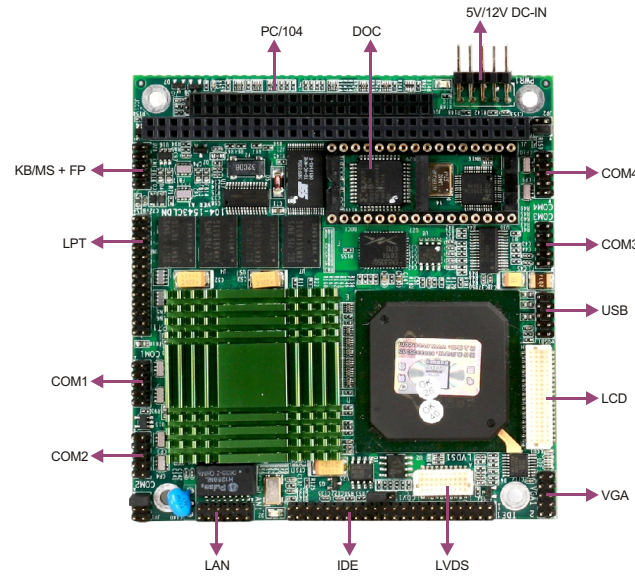


104-1543CLDN

PC/104 586-Level SBC with CPU/Memory/LCD/VGA/LVDS/SSD/LAN



Features

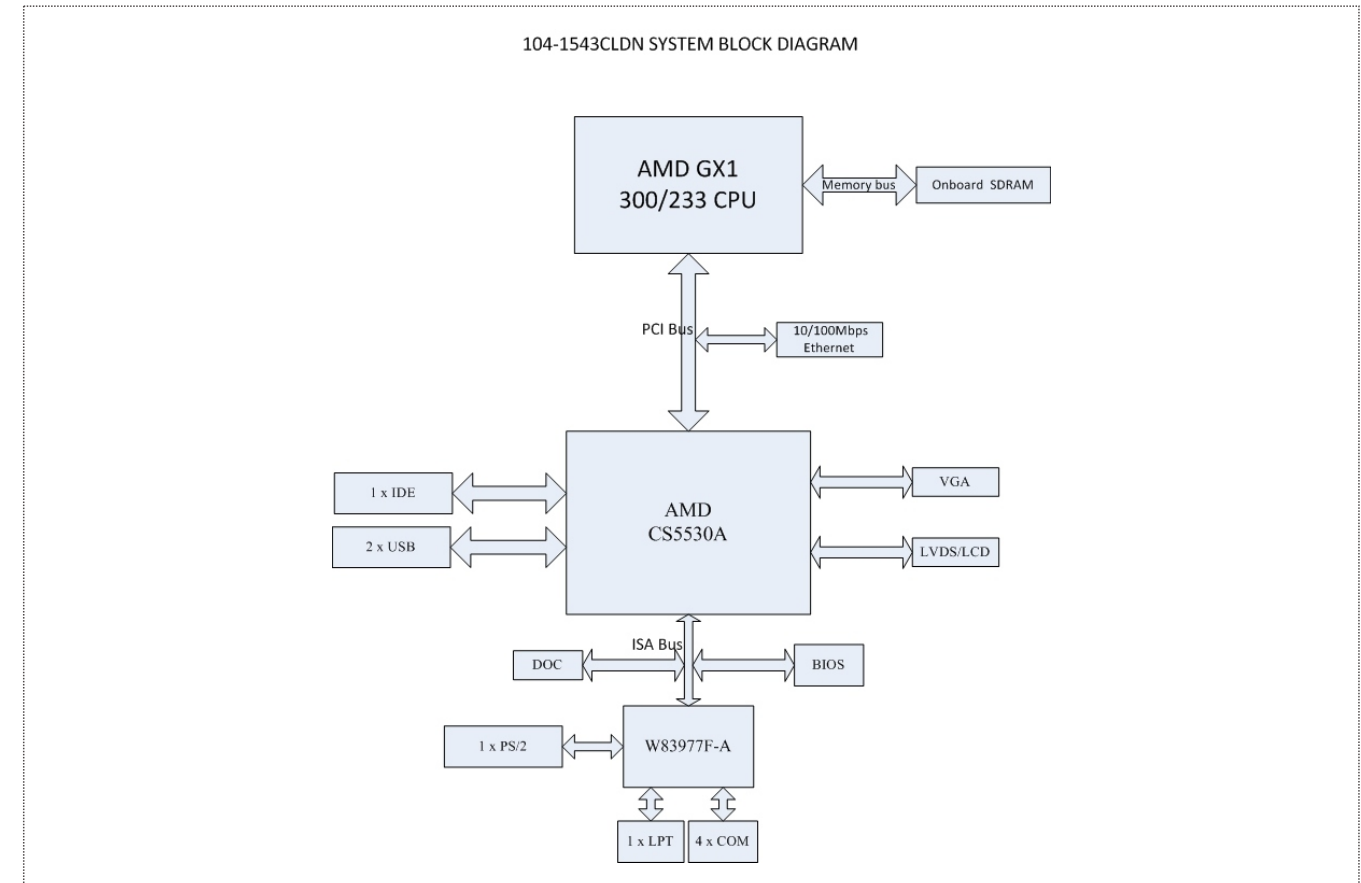
- PC/104 form factor
- Onboard Low-Power NS GX1 300MHz processor
- Onboard 128MB system memory
- Onboard one 10/100Mbps Ethernet controller
- Four serial ports, one parallel port, two USB ports
- Supports U-disk hot-swap in DOS mode
- Supports VGA and 18-bit LCD/LVDS

Specifications

System	
Processor	Onboard Low-Power NS GX1 300MHz processor, external bus frequency 33MHz
Chipset	CS5530A
Memory	Onboard 128MB system memory
Watchdog Timer	Software programmable supports 1~255 sec./min. System reset/interrupt
Expansion Interface	ISA bus, standard PC/104 bus interface
Storage	
IDE	1 x ATA100 IDE interface, supporting two IDE devices
DOC/DOM	1 x DIP32 DOC ADC II
I/O Interface	
USB	One onboard USB header providing two extra ports
Serial Port	4 x serial port, COM2 supports RS232/422/485
Parallel Port	1 x LPT
Keyboard/Mouse	1 x PS/2

Onboard Video	
Chipset	The chipset integrates graphics controller
Memory	Shared system memory, 1.5-4MB SDRAM video memory
Display	Supports VGA, 18-bit LCD/LVDS display, and ELscreen. Progressive scan CRT monitor, resolution up to 1280 x 1024 with 256 colors. Supports active matrix TFT color display, resolution up to 1280 x 1024
Ethernet	
Chipset	Realtek RTL8139DL Ethernet controller
Speed	10/100Mbps
Connector	Connects to Internet through specific transfer cable
Mechanical and Environmental	
Dimensions	96mm x 90mm
Operating Temperature	-40°C~85°C
Operating Humidity	5%-90%, non-condensing
Power	
Power Supply	+5V single power supply
Power Consumption	Typical 4.5W (NSGX1 300MHz, 128MB memory)
Operating System	
Operating System	DOS/WinCE 4.0/Windows NT 4.0/Windows 98SE

Board Diagram



Available Accessories

Part Number	Name	Description	Qty.
2192-003821	Driver CD/Pressed film/RoHS	104-1543CLDN/VER: A1	1
2330-000011	Jumper/RoHS	2.0mm pitch	4
2360-008781	HDD cable/RoHS	40-pin to 44-pin (2.0mm pitch), length: 550mm/RoHS	1
2360-011221	Parallel port cable/RoHS	DB25 connector to 26-pin (2x13) connector (2.0mm pitch), length: 300mm/RoHS	1
2360-011231	Serial port cable/RoHS	DB9 connector to 10-pin (2x5) connector (2.0mm pitch), length: 300mm/RoHS	4
2360-012641	VGA cable/RoHS	VGA connector to 10-pin (2x5) connector (2.0mm pitch), length: 300mm/RoHS	1
2360-012651	Power cable/RoHS	One male power 4-pin (5.08mm pitch) connector to 10-pin (2x5), length: 250mm/RoHS	1
2360-014781	Dual USB ports with bracket/RoHS	Two USB ports to one 10-pin (2x5) connector (2.0mm pitch), length: 550mm/RoHS	1
2360-017471	Parallel flat cable/RoHS	Two ports 2x6-pin connector (2.0mm pitch), length: 250mm	1
2360-017481	Multi-functional Conversion cable/RoHS	Buzzer reset button dual PS 2 connectors to 2x5-pin 2.0mm pitch female connector, length: 250mm	1
2412-000311	Setup Guide/RoHS	AMI/BIOS Setup Guide (for CORE/7) former/VER: A0	1
2413-005451	User's Manual/Chinese/RoHS	104-1543CLDN/VER: A1	1

Ordering Information

Part Number	Model Number	Description
0030-001030	104-1543CLDN	Motherboard
0030-004420	104-1543CLDN/Conformal coating	Motherboard/Conformal coating
0030-010541	104-1543CLDN/TC/Conformal coating	Motherboard/RoHS/TC/Conformal coating