

Output Specifications:

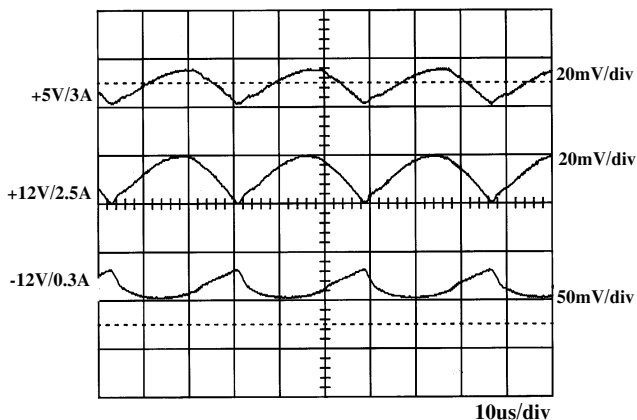
MODEL NO.	OUTPUT RAIL	LOAD			VOLTAGE ACCURACY	RIPPLE NOISE	LINE REG.	LOAD REG.
		MIN.	RATED	PEAK				
SNP-PA51	+5V	0A	3A	4A	+4.85~+5.15V	1%	±1%	±5%
	+12V	0A	2.5A	3A	+11.4~+12.6V	1%	±1%	±6%
	-12V	0A	0.3A	0.5A	-11.0~-13.0V	1%	±1%	±5%
SNP-PA53	+5V	0A	3.5A	4A	+4.85~+5.15V	1%	±1%	±5%
	+12V	0A	2.5A	3A	+11.4~+12.6V	1%	±1%	±6%
SNP-PA54	+5V	0A	3A	4A	+4.85~+5.15V	1%	±1%	±5%
	+15V	0A	1.5A	2A	+14.25~15.75V	1%	±1%	±6%
	-15V	0A	0.3A	0.5A	-13.5V~-16.5V	1%	±1%	±5%
SNP-PA5C	+9V	0A	5A		+8.5V~+9.5V	1%	±1%	±5%
SNP-PA55	+18V	0A	3A		+17.0V~+19.0V	1%	±1%	±5%
SNP-PA57	+12V	0A	4.2A		+11.4V~+12.6V	1%	±1%	±5%
SNP-PA58	+15V	0A	3.5A		+14.25V~+15.75V	1%	±1%	±5%
SNP-PA58-C	+13.8V	0A	3.5A	4A	+13.2V~+14.5V	1%	±1%	±5%
SNP-PA59	+24V	0A	2.3A		+23.0V~+25.0V	1%	±1%	±5%
SNP-PA5T	+48V	0A	1.1A		+45.6V~+50.4V	0.05%	±1%	±5%

Note:

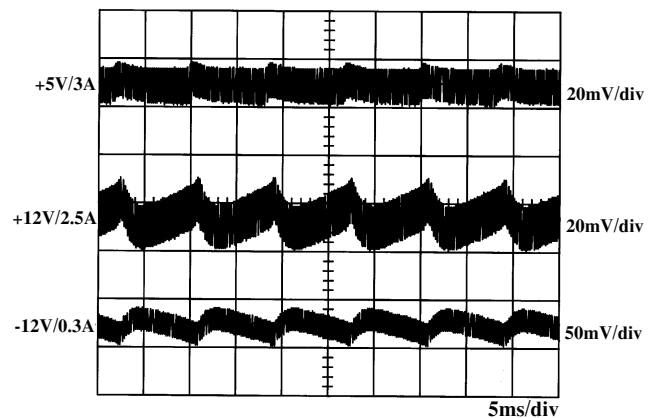
- Each output can provide up to peak load temporarily. Continuous staying in more than rated load will reduce the reliability.
- At factory, all outputs in 60% rated load condition, each output is checked to be within the accuracy range while the main output is setting to within the accuracy range at rated load.
- Line regulation is defined by changing $\pm 10\%$ of input voltage from nominal line at rated load.
- Load regulation is defined by changing $\pm 40\%$ of measured output load from 60% rated load at another output set to 60% rated load.
- Ripple & noise is measured by using 15MHz bandwidth limited oscilloscope and terminated each output with a 0.47 μ F capacitor at rated load and nominal line.
- Hold up time is measured from the end of the last charging pulse to the time which the +5V output drop down to 4.75V at rated load and nominal line.
- Efficiency is measured at rated load.

Performance for SNP-PA51

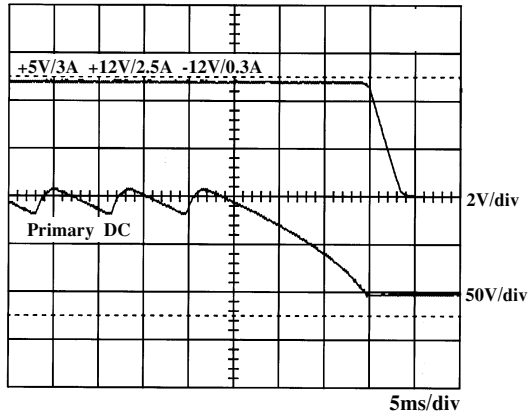
1. Switching frequency ripple



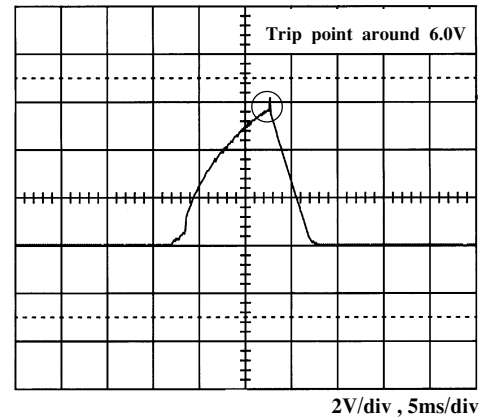
2. Line frequency ripple



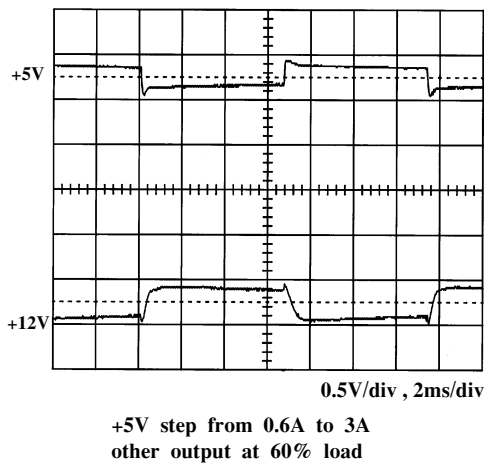
3. Hold-up time



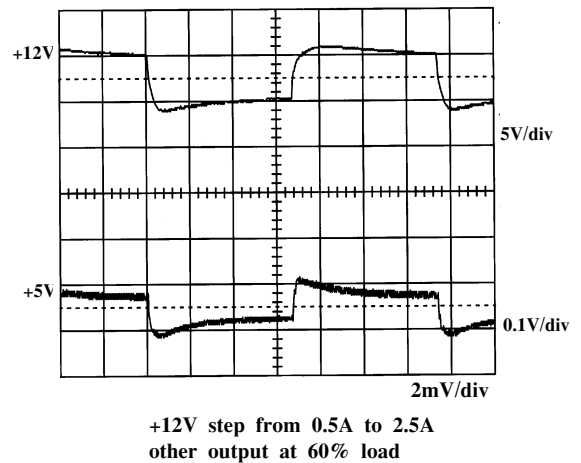
4. Over voltage protection



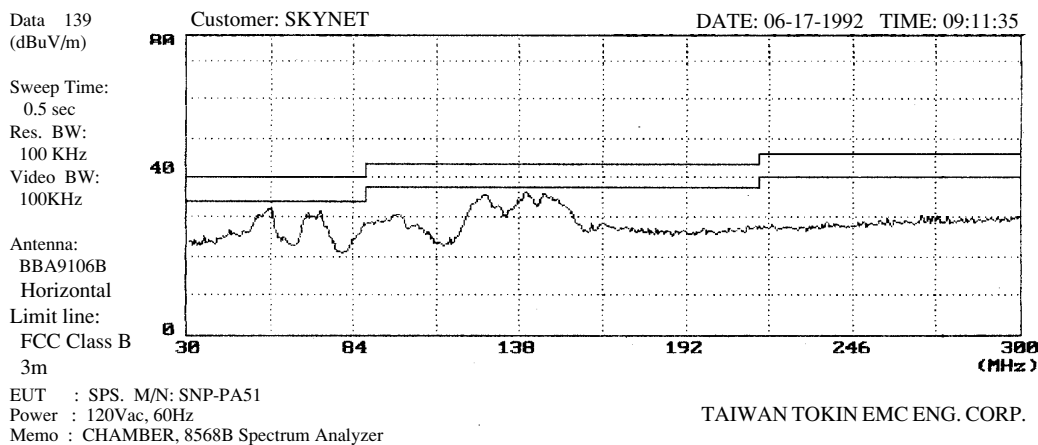
5. +5V step response



6. +12V step response

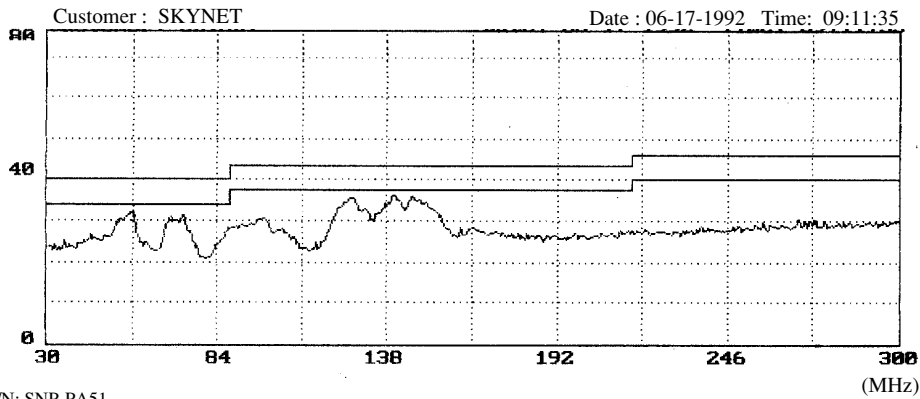


7. Radiation FCC B Performance



DATA 139
(DBuv/m)
Sweep Time:
0.5 sec
Res. BW:
100 KHz
Video BW:
100 KHz

Antenna:
BBA9106B
Horizontal
Limit line:
FCC Class B
3m



EUT : SPS. M/N: SNP-PA51
Power : 120Vac, 60Hz
Memo : CHAMBER. 8568B SPECTRUM ANALYZER

TAIWAN TOKIN EMI ENG. CORP.

8. VDE B performance

