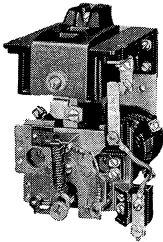




Type AV
Adjustable Voltage and Current Sensitive
Relay Up to 600 Volts Dc



Type AV

The type AV vibrating relay may be used as a field accelerating or decelerating relay, as a differential or reverse current relay, or for general use to open or close electrical circuits after a small change in current or voltage in the relay circuit. The main contact is of the single pole transfer type. Auxiliary contacts may be NO or NC, as desired. The relay is designed for mounting on insulating panels in the vertical position. The operating range is from 150 to 2250 ampere turns.

Ordering Information

1. Relay style and class numbers, control circuit voltage.
2. Specify the current range which must be handled.
3. Specify if for use on metal panel.
4. Specify styles for operating coils and studs as required.

Further Information

Instructions: I.L. 15-827-11
Brochure: B-9426
Renewal Parts Data: 15-827A18

List prices

Style Number	Without Coil With Blowouts	Without Coil Without Blowouts	Normally Open Auxiliary Interlock ③	List Price Without Coil	Relay Including Coil(s)			
					Voltage or 0-375 Amp		376-1000 Amp	
					1 Coil	2 Coils	1 Coil	2 Coils
1600 876③	0	\$364	\$484	\$656	\$670	\$824
②32A1528G05	0	364	484	656	670	824
31D9670G01	2	464	584	756	770	924
.....	1600 884	0	316	436	604	620	776
.....	②32A1528G06③	0	316	436	604	620	776
.....	31D9670G02	2	416	536	704	720	876
.....	31D9670G04	1RH	364	484	656	670	824
31D9670G05	1LH	416	536	704	720	876
31D9670G03	1RH	416	536	704	720	876
.....	31D9670G06	1LH	364	484	656	670	824

- ③ Changed or added since previous issue.
- ② Stock.
- ③ Flexible main contacts.

③ For unmounted auxiliary interlock, order Style No. 417C434G10; List Price \$50 each (mounts LH or RH side, may be used NO or NC).

Contact Ratings

Application	Interrupting Rating	Note:
Main Contacts		
	230 600 V. dc V. dc	Main Contact Wiring must be connected so that arc is blown upward.
	5 2 Amps. Amps.	
	230 600 V. dc V. dc	
	10 4 Amps. Amps.	
	Front Contact	Back Contact
	230 600 V. dc V. dc	230 600 V. dc V. dc
	5 2	1 .4
	Amps. Amps.	Amp. Amp.

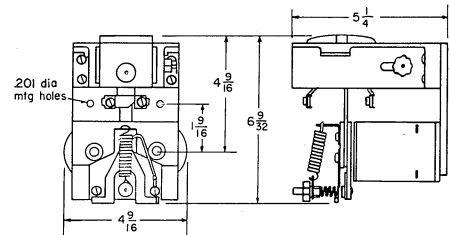
Interrupting Rating - Auxiliary Contacts

230 Volts dc - .5 Amp. 600 Volts dc - .15 Amp.

Modifications

For front connection and steel panel mounting add 10% to List for relays using coils with notes ①, ②, or ③ below.

Dimensions, Inches; Approximate Only



Operating Coil Data

Wire Wound Coils③				Strap Wound Coils③										
Style Number	Coil Turns	Contin-uous Rating Volts	Ohms	Style Number	Coil Turns	Contin-uous Rating	Style Number	Coil Turns	Refer-ence to Note	Contin-uous Rating	Style Number	Coil Turns	Refer-ence to Note	Contin-uous Rating
1754 334	85,000	600	31,850	1745 845	540	3.30 Amps.	1745 831	56	③	26 Amps.	1600 850	1	③	376 Amps.
1419 532	46,500	310	8,660	1745 825	480	3.80 Amps.	1745 832	36	③	41 Amps.	1600 851	1	②	750 Amps.
3450D52G27	37,400	250	5,580	1745 846	390	4.50 Amps.	1745 833	30	③	49 Amps.	1745 035	1	①	1,000 Amps.
1419 531	33,000	230	4,500	1745 826	308	5.70 Amps.	1745 834	26	③	58 Amps.				
1419 530	22,500	150	2,080	1745 847	280	6.30 Amps.	1745 835	20	③	78 Amps.				
1745 841	18,300	125	1,350	1745 827	210	8.70 Amps.	1600 861	18	③④	90 Amps.				
1745 842	9,300	62.5	350	1745 848	176	10.20 Amps.	1600 860	14	③④	107 Amps.				
1754 306	7,400	50	215	1745 828	140	12.90 Amps.	1600 859	12	③④	125 Amps.				
1754 307	5,900	40	135	1745 849	112	16.20 Amps.	1600 858	10	③④	150 Amps.				
1754 300	2,500	.72 Amps.		1745 829	100	18.00 Amps.	1600 857	8	③④	188 Amps.				
1754 301	2,000	.90 Amps.		1745 830	88	21.00 Amps.	1600 856	6	③④	250 Amps.				
1745 843	1,600	1.14 Amps.		1745 850	66	27.00 Amps.	1600 855	5	③④	300 Amps.				
1754 302	1,250	1.44 Amps.					1600 854	4	③④	375 Amps.				
1754 303	1,150	1.56 Amps.					1600 853	3	②	500 Amps.				
1745 844	860	2.10 Amps.					1600 852	2	②	750 Amps.				
1745 823	720	2.50 Amps.												
1745 824	650	2.70 Amps.												

Note: Two studs are required for the above strap wound coils.

- ① Style number 1170 460, 2 req. (1" stud)
- ② Style number 1600 870, 1 req. (3/4" stud)
- ③ Style number 1600 871, 1 req. (3/4" stud)
- ④ Style number 1600 867, 1 req. (1/2" stud)
- ⑤ Style number 1600 868, 1 req. (1/2" stud)
- ⑥ Rear connection only. Front connection styles are available.
- ⑦ Suitable for front connection w/o modification.
- ⑧ Front connected strap wound coils for steel panel mounting use connectors in place of studs.