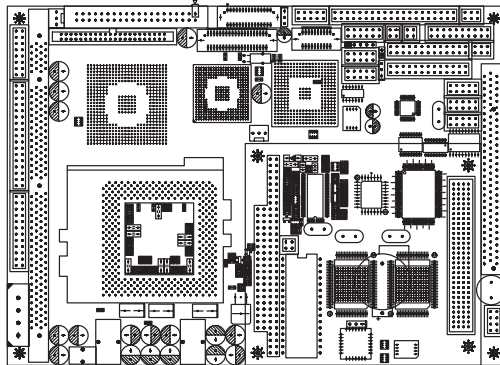


EmCORE-i6325

5.25" Integrated Socket 370 Pentium III Miniboard with CRT / DVI / LCD / TV-Out, Audio, Dual LAN & PC/104-Plus



Features



- ★ Socket 370 supports up to Pentium III/512K 1.26GHz
- ★ One 168-pin DIMM socket support up to 512MB PC133 SDRAM
- ★ Intel 82815E Integrated VGA or SMI LynxDM+ SMI 722 for Flat Panel / CRT/DVI (TMDS) and TV-out, Support Dual Display
- ★ Dual 10/100 Fast Ethernet, Realtek 8100BL or Intel 82551
- ★ PCI & PC/104-Plus socket expansion
- ★ Support Unique Board ID# for software based security and IP protection

Specifications

System

- **CPU Type:** Socket 370 FC-PGA & FC-PGA2 Intel Celeron/Pentium III 512K (Tualatin)
- **System Memory:** Up to 512MB PC133 SDRAM on one 168-pin DIMM socket
- **L2 Cache:** CPU integrated
- **Chipset:** Intel 82815E & 82801BA includes Graphics Memory Controller Hub (GMCH), I/O Controller Hub 2 (ICH2) and Firmware Hub (FWH)
- **BIOS:** Award BIOS with 4MB Flash in Firmware Hub (FWH) supports PnP, APM, Multi Boot, DMI, ACPI
- **Watchdog Timer:** 254-level
- **Expansion:** PC104-Plus & PCI slot

Multiple I/O

- **Serial:** 3 high speed RS-232C ports (COM1/3/4)
1 high speed RS-232C/422/485 port (COM2)
- **Parallel:** SPP, EPP and ECP mode, BIOS enabled/disabled
- **Enhanced IDE:** Dual ports up to four ATAPI devices, Ultra DMA-33
- **Floppy:** 1 port up to 2 floppy disk drives
- **IrDA:** SIR IrDA 1.1 compliant
- **USB:** 4 USB v1.1 ports
- **K/B & Mouse:** PS/2 KB/Mouse port

LAN

- **Chipset:** Intel 82551 or Realtek 8100BL
- **Type:** 10/100Mbps, Wake-On-LAN supported
- **Connector:** RJ-45

Audio

- **Chipset:** Intel ICH2 Integrated
- **Audio Controller:** AC'97 v2.2

Flash Disk

- CompactFlash Type I/II
- DiskOnChip 2000

Display Options

Flat Panel / CRT (EmCORE-i6325VL/R)

- **Chipset:** Intel 82815E integrated 2D/3D Video Accelerator, supports 4x AGP and 128-bit engine
- **Display Memory:** 8/16/32MB Shared Memory
- **Display Type:** CRT, DVI (TMDS)
- **CRT:** Up to 1280 x 1024 @ 24 bpp
- **TMDS:** DVI Transmitter up to 165MHz (1024 x 768 @ 24-bit)

Flat Panel / CRT (EmCORE-i6325VL2R/S)

- **Chipset:** SMI LynxDM+ SMI 722, 64-bit GUI 3D engine
- **Display Memory:** 8MB on-die
- **Display Type:** CRT and Flat Panel (MONO, DSTN, TFT), Dual Display
- **CRT:** 1280 x 1024 @ 24-bit
- **LCD Interface:** TTL/LVDS 1024 x 768 @ 24-bit; TTL/LVDS 1280 x 1024 @ 16-bit
- **TV-out:** NTSC, PAL format and provides CVBS, S-Video and SCART (RGB) outputs up to 1024 x 768 graphics resolutions

Mechanical and Environment

- **Operating Temperature:** 0 ~ 60°C (32 ~ 140°F)
- **Relative Humidity:** Up to 90% @ 55°C
- **Dimension (L x W):** 203 x 146 mm (8" x 5.75")
- **Weight:** 0.28 Kg (0.62 lb)

Ordering Information

EmCORE-i6325VL/R

5.25" Socket 370 PIII miniboard with 4xAGP CRT SVGA, Realtek Fast Ethernet, Audio and CompactFlash Socket

EmCORE-i6325VL2R/S

Same as above with SMI LynxDM+ SMI 722 and Dual Realtek Fast Ethernet

Cooling Option refer to

Page 3-53