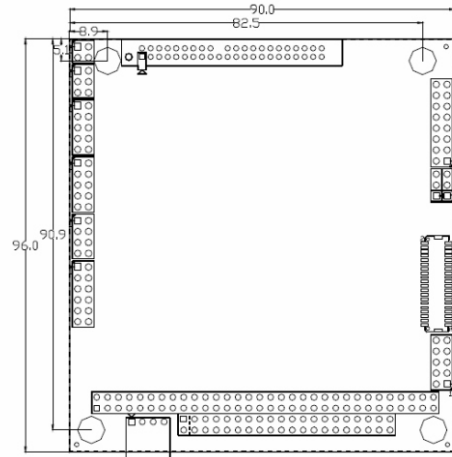
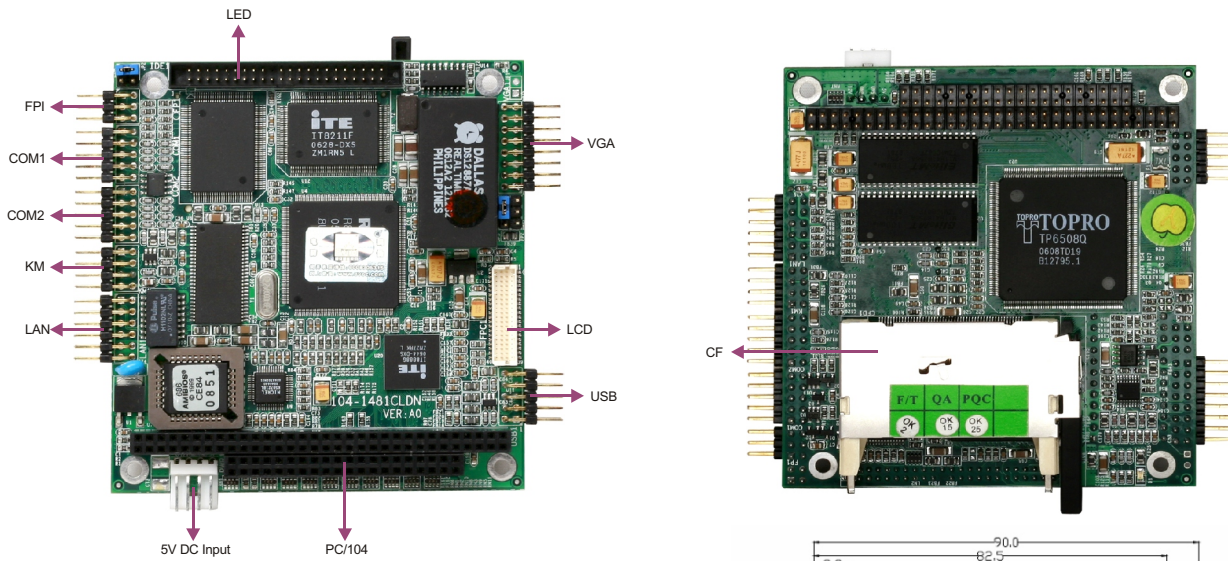


104-1481CLDN

PC/104 486-Level SBC with CPU/Memory/LCD/VGA/SSD/LAN



Features

- PC/104 form factor
- Onboard low-power processor at maximum frequency of 133MHz
- Onboard 32MB system memory
- Onboard one 10/100Mbps Ethernet controller
- Supports 2 x USB, 2 x COM, 1 x IDE, 1 x CF socket
- Supports VGA and LCD display

Specifications

System

| | |
|---------------------|--|
| Processor | Onboard Hero II low-power processor at maximum frequency of 133MHz |
| Chipset | Single chip integration |
| Memory | Onboard 32MB SDRAM |
| Watchdog Timer | Super I/O watchdog: Software programmable supports 1~255 sec./min. System reset/interrupt CPU watchdog: Software programmable supports 1~7 sec./min. System reset/interrupt |
| Expansion Interface | ISA bus, standard PC/104 bus interface |

Storage

| | |
|---------------|--|
| IDE | 1 x 44-pin IDE interface, supporting two IDE devices |
| Onboard Flash | Onboard 8MB flash, can be used as disk A or disk C |
| CF | 1 x CompactFlash socket, mobile storage device in IDE mode, satisfying more expansion requirements |

I/O Interface

| | |
|----------------|--|
| USB | One onboard USB header providing two extra ports |
| Serial Port | 2 x serial port, COM2 supports RS-232/485 |
| Keyboard/Mouse | 1 x PS/2 |

Onboard Video

| | |
|---------|---|
| Chipset | Onboard TOPRO TP6508 graphics controller |
| Memory | 1MB video memory |
| Display | Supports VGA and LCD display, and dual-display of VGA+LCD |

Ethernet

| | |
|-----------|---|
| Chipset | MICREL KS8721BLEthernet controller |
| Speed | 10/100Mbps |
| Connector | Connects to Internetthrough specific transfer cable |

Mechanical and Environmental

| | |
|-----------------------|------------------------|
| Dimensions | 96mm x 90mm |
| Operating Temperature | -40°C~85°C |
| Operating Humidity | 5%-90%, non-condensing |

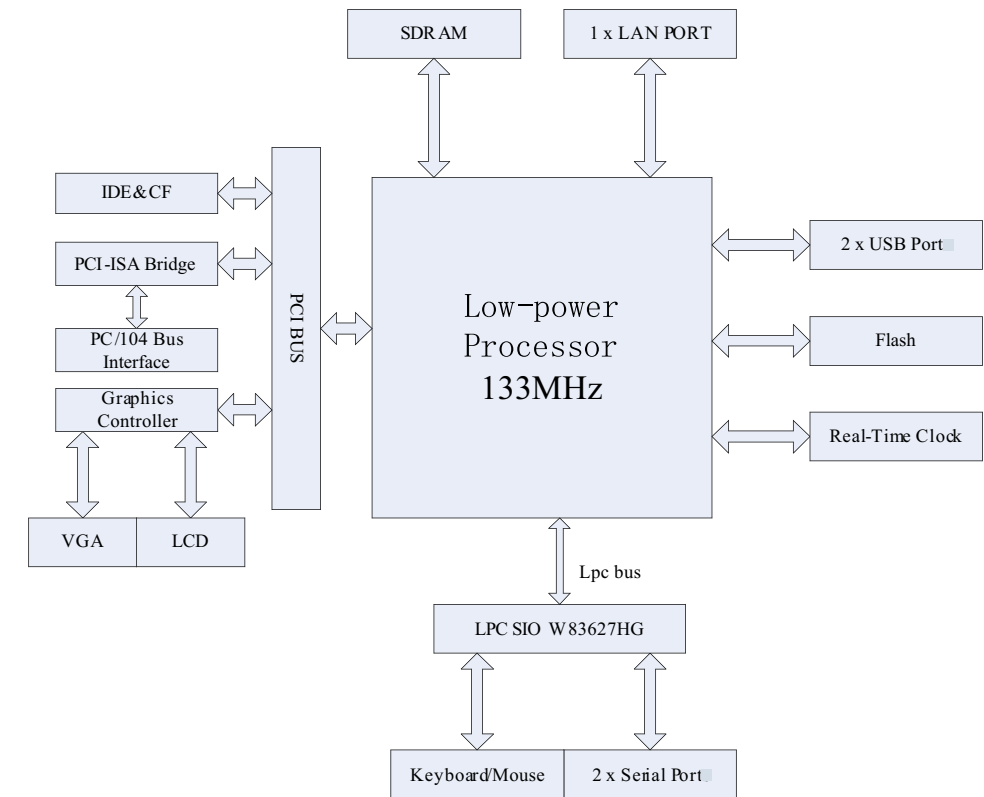
Power

| | |
|-------------------|---|
| Power Supply | +5V single power supply |
| Power Consumption | Typical 4.9W (HeroII 133MHz CPU, 32MB memory) |

Operating System

| | |
|------------------|-----------------------------|
| Operating System | DOS/WinCE 4.0/Linux/Vxworks |
|------------------|-----------------------------|

Board Diagram



Available Accessories

| Part Number | Name | Description | Qty. |
|-------------|-------------------------------------|---|------|
| 2192-002531 | Driver CD/Pressed film/RoHS | 104-1481CLDN/VER:A0 | 1 |
| 2330-000041 | Jumper/RoHS | 2.54mm pitch, blue | 2 |
| 2331-001991 | Socket/RoHS | PC104 2x20-pin 2.54mm pitch female pin length: 12.5mm | 1 |
| 2331-002011 | Socket/RoHS | PC104 2x32-pin 2.54mm pitch female pin length: 12.5mm | 1 |
| 2331-002251 | Pin header/RoHS | 2x20-pin, 2.54mm pitch, two sides of same length: 6+6mm | 1 |
| 2331-002261 | Pin header/RoHS | 2x32-pin, 2.54mm pitch, two sides of same length: 6+6mm | 1 |
| 2360-000831 | Y-cable for keyboard and mouse/RoHS | PS/2 port connector to 8-pin (2x4), length: 300mm/RoHS | 1 |
| 2360-000851 | VGA cable/RoHS | VGA connector to 16-pin (2x8), length: 220mm/RoHS | 1 |
| 2360-002571 | Dual USB ports with bracket/B4/RoHS | Two USB ports to one 10-pin (2x5), length: 210mm/RoHS | 1 |
| 2360-008351 | Serial port cable/RoHS | DB9 connector to 10-pin (2x5)connector (2.54mm pitch), length: 300mm/RoHS | 2 |
| 2360-008781 | HDD cable/RoHS | 40-pin to 44-pin (2.0mm pitch), length: 550mm/RoHS | 1 |
| 2360-014251 | LAN cable/RoHS | RJ-45 connector to 8-pin (2x4) connector (2.54mm pitch), length: 300mm/RoHS | 1 |
| 2391-002141 | Nut/RoHS | M3/GB-T6170-1986/nickel plating | 4 |
| 2391-004621 | Copper hex bolts/RoHS | M3x16-6/CH-M3-16-6-Ni | 4 |
| 2412-000311 | Setup Guide/RoHS | AMI/BIOS Setup Guide (for CORE/7) former/VER: A0 | 1 |
| 2413-000471 | User's Manual/Chinese/RoHS | 104-1481CLDN/VER: A2 | 1 |

Ordering Information

| Part Number | Model Number | Description |
|-------------|-----------------------------------|---------------------------------------|
| 0030-010571 | 104-1481CLDN/TC/Conformal coating | Motherboard/RoHS/TC/Conformal coating |
| 0030-004371 | 104-1481CLDN/Conformal coating | Motherboard/RoHS/Conformal coating |
| 0030-005960 | 104-1481CLDN | Motherboard |
| 0030-004370 | 104-1481CLDN/Conformal coating | Motherboard/Conformal coating |