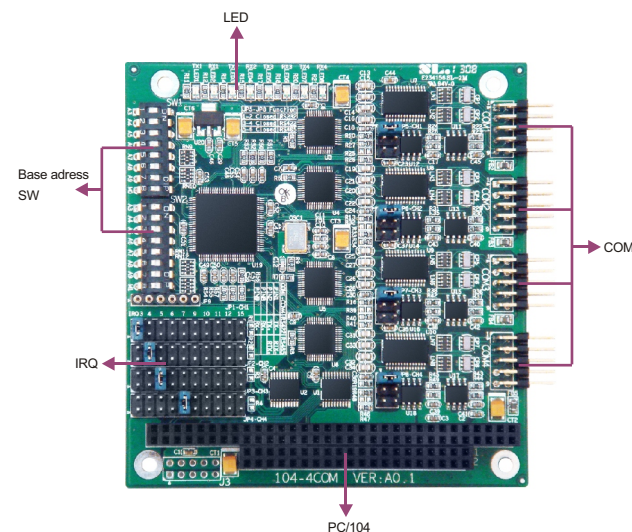
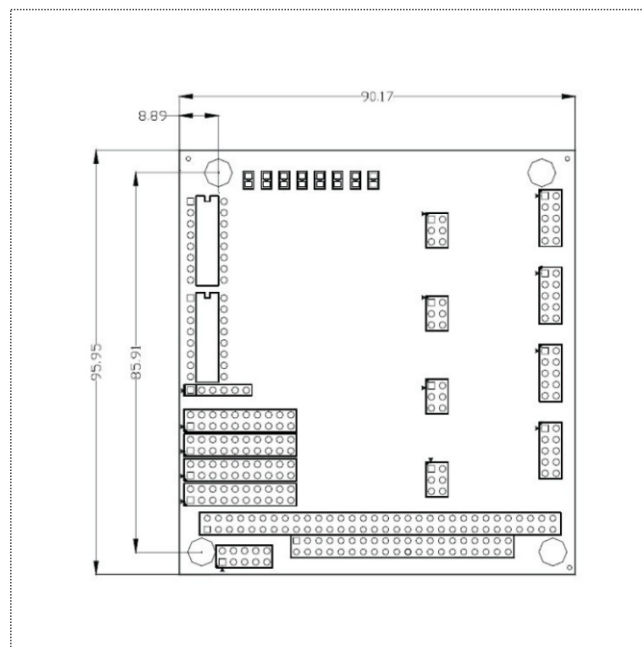


# 104-4COM

PC/104 expansion bus, 4-serial-port expansion module.



## Dimensions



## Features

- PC/104 expansion bus
- 4 x RS-232/422/485 serial port
- Expandable Temperature: -40°C~85°C



## Specifications

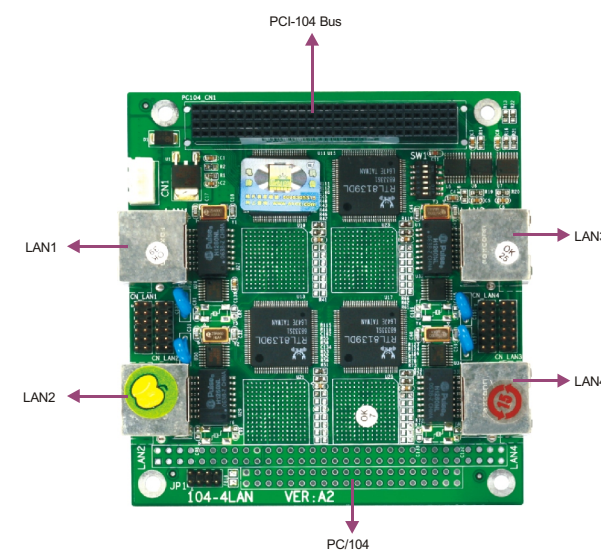
Expansion Bus	PC/104 expansion bus
Operating System	Supports Windows 95/98/2000/NT4.0/XP/XPE/CE, Linux and DOS.
Serial Port	4 x RS-232/422/485
Transmitting Speed	50~115200bps
Power Supply	PC/104 bus power supply
Dimensions	96mm x 90mm
Expandable Temperature	-40°C~85°C
Operating Humidity	5%~90% RH, non-condensing

## Ordering Information

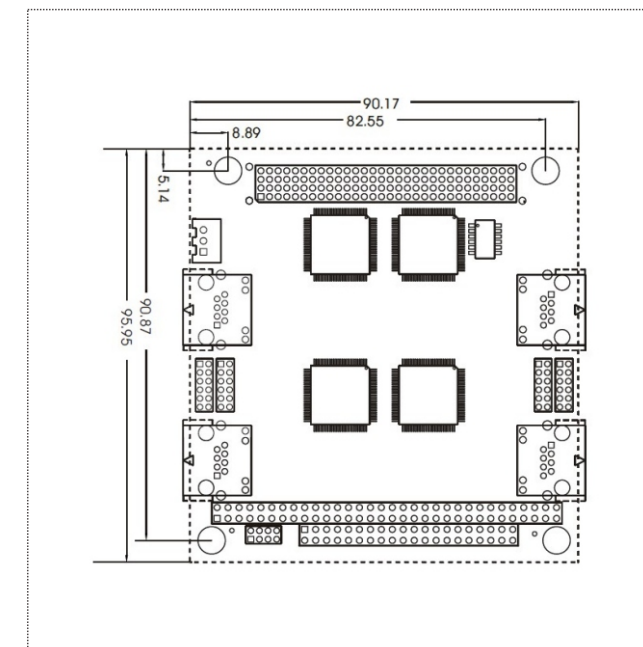
Part Number	Model Number	Description
0090-000990	104-4COM	PC/104 expansion bus, 4-serial-port expansion module.

# 104-4LAN

PC/104-Plus Network Expansion Module



## Dimensions



## Features

- 1~4 Network ports for selection
- PCI resource optional for each port
- Full/half duplex mode
- 32-bit data transmit bus



## Specifications

System	
Expansion Interface	PCI-104 expansion bus
Ethernet	
Ethernet Controller	RTL8139D or Intel 82551QM (optional)
Speed	10/100Mbps
Connector Interface	4 x 10/100Mbps network port

## Mechanical and Environmental

Dimensions	96mm x 90mm
Operating Temperature	-40°C~85°C
Storage Temperature	-40°C~85°C
Operating Humidity	5%~90%, non-condensing

## Power

Power Supply	Single +5V PCI-104 power supply
Power Consumption	+5V @1.5A

## Operating System

Windows OS	Supports Windows95/98/98SE/2000/ME/NT4.0/XP and WinCE
Embedded OS	Linux

## Certification

CE, RoHS

## Available Accessories

Part Number	Name	Description	Qty.
—	Driver CD/Protective film/RoHS	104-4LAN	1
2330-000011	Jumper/RoHS	2.0mm pitch	1
2360-017181	LAN cable/RoHS	RJ45 connector to 2x4 Pin connector (2.0mm pitch)/length: 190/104-4LAN-specific	1
—	User's Manual/RoHS	104-4LAN	1

## Ordering Information

Part Number	Model Number	Description
0090-001751	104-1LAN	Conversion board/RoHS
0090-001721	104-2LAN	Conversion board/RoHS
0090-001701	104-4LAN	Conversion board/RoHS
0090-001711	104-4LAN-82551	Conversion board/RoHS
0090-002701	104-4LAN-82551/Conformal coating	Conversion board/RoHS/Conformal coating
0090-002691	104-4LAN/Conformal coating	Conversion board/RoHS/Conformal coating