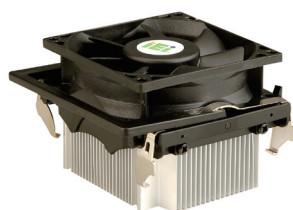


CPU Cooler

High performance thermal solutions



Pentium® 4 (Socket 478)



CF-519-RS
High Performance Copper Core Socket 478 CPU Cooler, RoHS

	CF-478A-RS
Dimensions (DxWxHmm)	92x92x67
Material	Cu
Bearing Type	Rifle
Capability (Watt)	115W
Fan speed (RPM)	3600
Noise level (dBA)	39.6
Life expectance (hrs)	40000
G.W. (g)	390

Pentium® M (Socket 479)



CF-518-RS
High Performance Pentium-M CPU Cooler, RoHS

	CF-518-RS
Dimensions (DxWxHmm)	60x60x26
Material	Aluminum Alloy
Bearing Type	Two ball
Capability (Watt)	20W
Fan speed (RPM)	5000
Noise level (dBA)	36.1
Life expectance (hrs)	50000
G.W. (g)	116

Pentium® 4-M



CF-515
High Performance Skivung Pentium 4-M CPU Cooler

	CF-515
Dimensions (DxWxHmm)	62x62x37
Material	Aluminum Alloy
Bearing Type	Two ball
Fan speed (RPM)	4500
Noise level (dBA)	36
Life expectance (hrs)	40000
G.W. (g)	196

Pentium® 3 (Socket 370)



40W

CF-370A-RS
High Performance Slim Type Socket 370 CPU Cooler, RoHS

	CF-370A-RS
Dimensions (DxWxHmm)	50x52x20
Material	Cu-Al
Bearing Type	Two ball
Capability (Watt)	40W
Fan speed (RPM)	5500
Noise level (dBA)	32.1
Life expectance (hrs)	40000
G.W. (g)	62

Pentium® M (Socket 479)

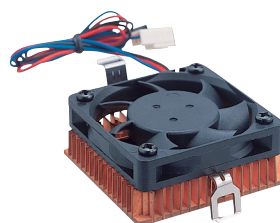


86W

CF-479A-RS
High Performance Socket-479 Pentium M CPU Cooler (60x60), RoHS

	CF-479A-RS
Dimensions (DxWxHmm)	60x60x39.5
Material	Al
Bearing Type	Two ball
Capability (Watt)	86W
Fan speed (RPM)	4800
Noise level (dBA)	37
Life expectance (hrs)	40000
G.W. (g)	145

Pentium® 3 (Socket 370)



CF-504-RS
Slim Type Copper Socket-370 CPU Cooler, RoHS

	CF-504-RS
Dimensions (DxWxHmm)	51x50x20
Material	Cu
Bearing Type	Two ball
Capability (Watt)	21.4W
Fan speed (RPM)	5500
Noise level (dBA)	30
Life expectance (hrs)	70000
G.W. (g)	160

Pentium® M (Socket 479)

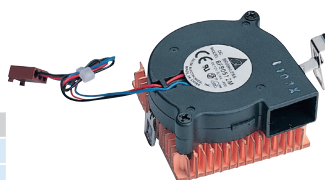


50W

CF-479B-R10
High Performance Socket-479 Pentium M CPU Cooler (60x60), RoHS

	CF-479B-RS
Dimensions (DxWxHmm)	50x50x26
Material	Al
Bearing Type	Two ball
Capability (Watt)	50W
Fan speed (RPM)	6000
Noise level (dBA)	39
Life expectance (hrs)	40000
G.W. (g)	86

Pentium® 3 (Socket 370)



CF-507-RS
Socket 478 Retention kit full metal material, RoHS

	CF-507-RS
Dimensions (DxWxHmm)	53x51x25.5
Material	Cu
Bearing Type	One ball
Capability (Watt)	21.4W
Fan speed (RPM)	4500
Noise level (dBA)	32.5
Life expectance (hrs)	50000
G.W. (g)	160