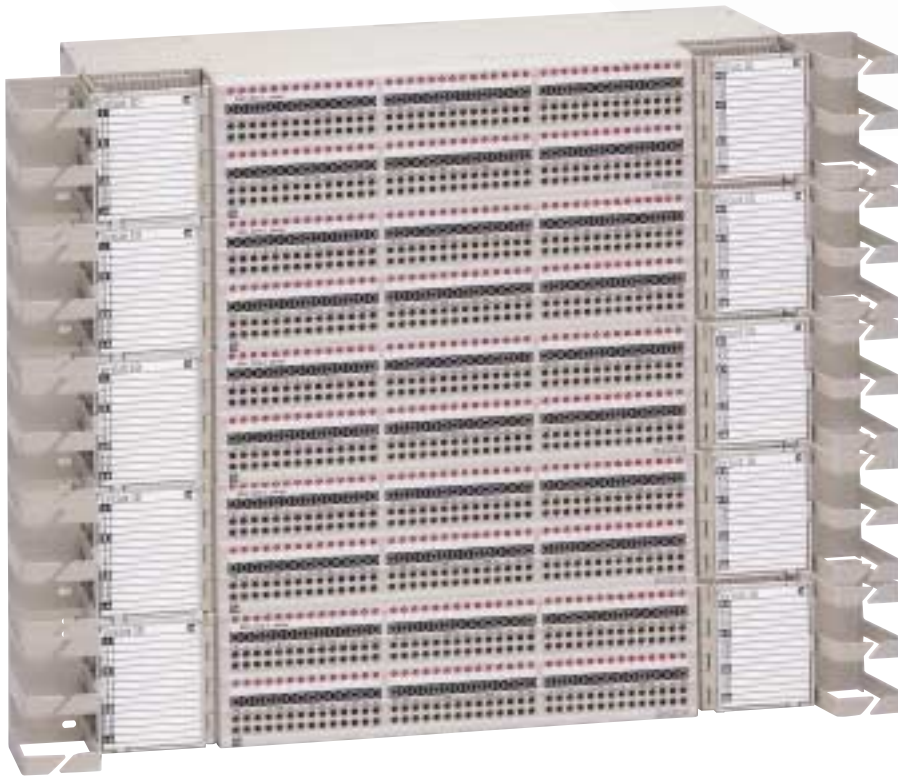




## The DSX<sup>i</sup>™ Advantage

### DSX<sup>i</sup>™ Improvements over Traditional DSX Panels



#### DSX<sup>i</sup> Panel Design Improvements

- Higher density (4" chassis)
- Physical separation of monitor and out ports
- Shadowing of monitor ports
- Every circuit numbered
- Contoured fascia
- Improved label cards
- Smaller, brighter LEDs
- Bolded key circuits
- Added label space

# The DSXi Advantage



Traditional Panel

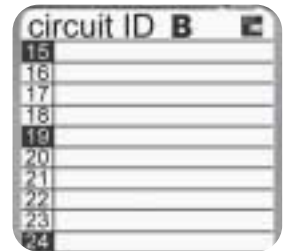


DSXi Panel

Every circuit numbered



Traditional Panel



DSXi Panel

Improved label cards



DSXi Panel

Traditional Panel

Each panel saves one inch of valuable rack space



Traditional Panel

DSXi Panel

Reduced height equals greater density

## Traditional to DSXi Cross-Reference

Traditional Catalog Number	Description	DSXi Catalog Number	Difference
D1M-1A0013	84-Position Front Split Cross-Connect, 1-28ABC, Putty, 5" x 23" x 8"	Di-M2GU1	4" x 23" x 8"
D1M-1A0018	84-Position Front Split Cross-Connect, 1-84, Putty, 5" x 23" x 8"	Di-M2CU1	4" x 23" x 8"
D1M-1A0043	84-Position Front Split Cross-Connect, 1-28ABC, Black, 5" x 23" x 8"	Di-M2GU1	4" x 23" x 8", Putty
D1M-1A0019	84-Position Front Split Cross-Connect, 1-84, Black, 5" x 23" x 8"	Di-M2CU1	4" x 23" x 8", Putty
D1M-1A0021	84-Position Front Split Cross-Connect, 64 Pin, 1-28ABC, Putty, 5" x 23" x 10"	Di-M3GU1	4" x 23" x 8"
D1M-1A0023	84-Position Front Split Cross-Connect, 64 Pin, 1-84, Putty, 5" x 23" x 10"	Di-M3CU1	4" x 23" x 8"
D1M-1C0028	84-Position Front Below Cross-Connect, 1-28ABC, Putty, 7" x 23" x 8"	Di-T2GU1	7" x 19/23" x 8"
D1M-1C0031	84-Position Front Below Cross-Connect, 1-84, Putty, 7" x 23" x 8"	Di-T2CU1	7" x 19/23" x 8"
D1M-1C0002	84-Position Front Below Cross-Connect, 1-84, Putty, 7" x 19" x 8"	Di-T2CU1	7" x 19/23" x 8"
D1M-1C0029	84-Position Front Below Cross-Connect, 1-28ABC, Black, 7" x 19" x 8"	Di-T2GU1	7" x 19/23" x 8", Putty
D1M-1C0022	84-Position Front Below Cross-Connect, 1-84, Black, 7" x 19" x 8"	Di-T2CU1	7" x 19/23" x 8", Putty
D1M-1B0004	84-Position Rear Cross-Connect, 1-28ABC, Putty, 5" x 23" x 10"	Di-G2GU1	4" 23" x 8"
D1M-1B0005	84-Position Rear Cross-Connect, 1-84, Putty, 5" x 23" x 10"	Di-G2CU1	4" 23" x 8"
D1M-1B0011	84-Position Rear Cross-Connect, 1-28ABC, Black, 5" x 23" x 10"	Di-G2GU1	4" 23" x 8", Putty
D1M-1B0006	84-Position Rear Cross-Connect, 1-84, Black, 5" x 23" x 10"	Di-G2CU1	4" 23" x 8", Putty
D1M-1B0007	84-Position Rear Cross-Connect, 64 Pin, 1-28ABC, Putty, 5" x 23" x 10"	Di-G3GU1	4" x 23" x 8"
D1M-1A0014	84-Position All Front Access, 1-28ABC, Putty, 7" x 23" x 8"	Di-X2GU1	6" 23" x 8"
D1M-1A0036	84-Position All Front Access, 1-84, Putty, 7" x 23" x 8"	Di-X2CU1	6" 23" x 8"
D1M-1C2006	64-Position Front Below Cross-Connect, 1-32AB, Putty, 7" x 19/23" x 8"	Di-R2GU1	6" 19/23" x 8"
DSX-DR64	64-Position Front Below Cross-Connect, Black, 1-64, 7" x 23" x 8"	Di-R2CU1	6" 19/23" x 8", Putty
D1M-1C2020	64-Position Front Below Cross-Connect, Black, 1-64, 7" x 19" x 8"	Di-R2CU1	6" 19/23" x 8", Putty
DSX-BEST-64	64-Position Rear Cross-Connect, Black, 1-32AB, 4" x 23" x 8"	Di-D2GU1	4" 19/23" x 8", Putty
DSX-BEST-64A	64-Position Rear Cross-Connect, Black, 1-64, 4" x 23" x 8"	Di-D2CU1	4" 19/23" x 8", Putty
D1M-1D2005	64-Position Rear Cross-Connect, black, 1-32AB, 7" x 19" x 8"	Di-D2GU1	4" 19/23" x 8", Putty
D1M-1D2001	64-Position Rear Cross-Connect, Black, 1-64, 5.25" x 19" x 8"	Di-D2CU1	4" 19/23" x 8", Putty
D1M-1A2006	64-Position Front Split Cross-Connect, 1-32AB, 5" x 23" x 8"	Di-K2GU1	4" 23" x 8"
D1M-1A2004	64-Position Front Split Cross-Connect, 1-64, 5" x 23" x 8"	Di-K2CU1	4" 23" x 8"
D1M-1A2007	64-Position Front Split Cross-Connect, Black, 1-32AB, 5" x 23" x 8"	Di-K2GU1	4" 23" x 8", Putty
D1M-1A2005	64-Position Front Split Cross-Connect, Black, 1-64, 5" x 23" x 8"	Di-K2CU1	4" 23" x 8", Putty
DSX-CEV-64	64-Position All Front Access, 1-32AB, 6" x 23" x 8"	Di-W2GU1	6" x 23" x 8", Putty
DSX-DR64/F	64-Position All Front Access, Black, 1-64, 8.25" x 23" x 8"	Di-W2CU1	6" x 23" x 8", Putty
DSX-DR	56-Position Front Below Cross-Connect, Black, 1-28AB, 7" x 23" x 8"	Di-N2GU1	6" x 19/23" x 8", Putty
DSX-DR56-5	56-Position Front Below Cross-Connect, Black, 1-56, 5" x 23" x 6.12"	Di-N2CU1	6" x19/ 23" x 8", Putty
DSX-DR19	56-Position Front Below Cross-Connect, Black, 1-28AB, 7" x 19" x 8"	Di-N2GU1	6" x 19/23" x 8", Putty
DSX-DR-56-1	56-Position Front Below Cross-Connect, Black, 1-56, 5" x 19" x 8"	Di-N2CU1	6" x19/ 23" x 8", Putty
DSX-BEST-56	56-Position Rear Below Cross-Connect, Black, 1-56, 4" x 23" x 8"	Di-A2CU1	4" x 19/23" x 8", Putty
DSX-BEST-56C	56-Position Rear Below Cross-Connect, Black, 1-28AB, 4" x 23" x 8"	Di-A2GU1	4" x19/ 23" x 8", Putty
DSX-BEST-56/19	56-Position Rear Below Cross-Connect, Black, 1-56, 7" x 19" x 8"	Di-A2CU1	4" x 19/23" x 8", Putty
DSX-DR19-RX	56-Position Rear Below Cross-Connect, Black, 1-28AB, 7" x 19" x 8"	Di-A2GU1	4" x19/ 23" x 8", Putty
DSX-CEV-56	56-Position All Front Access, Black, 1-28AB, 6" x 23" x 8"	Di-U2GU1	6" x 19/23" x 8", Putty



**Web Site: [www.adc.com](http://www.adc.com)**

From North America, Call Toll Free: 1-800-366-3891 • Outside of North America: +1-952-938-8080 Fax: +1-952-917-3237  
For a listing of ADC's global sales office locations, please refer to our web site.

ADC Telecommunications, Inc., P.O. Box 1101, Minneapolis, Minnesota USA 55440-1101  
Specifications published here are current as of the date of publication of this document. Because we are continuously improving our products, ADC reserves the right to change specifications without prior notice. At any time, you may verify product specifications by contacting our headquarters office in Minneapolis. ADC Telecommunications, Inc. views its patent portfolio as an important corporate asset and vigorously enforces its patents. Products or features contained herein may be covered by one or more U.S. or foreign patents.

