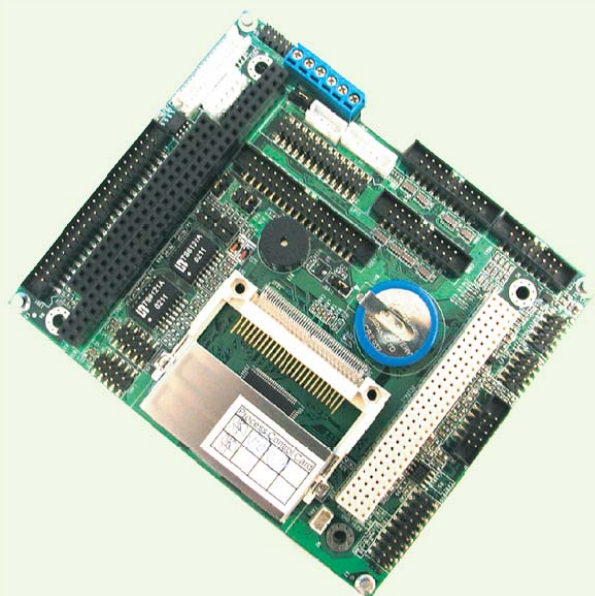


# AR-B1720

PC 104

Embedded Computing Board



## Features

**Intel Celeron M 600MHz PC/104 plus CPU Card with VGA/ Dual LAN, 4 COM , and CF**

- Celeron M >
- LAN >
- VGA/LVDS >
- 2 LAN >
- DDR >
- CF >
- 4 USB 2.0 >
- Dual Display >
- 4 COMs >

## Specification

### System:

CPU	Intel ULV Celeron M 600MHz with onboard FSB 400MHz (Optional ULV Celeron M 1.0GHz/Pentium M Dothan 1.4GHz CPU)
Chipset	Intel 852GM + Intel ICH 4
System Memory	1 x 200Pin SO-DIMM up to 1.0GB DDR SDRAM
BIOS	Phoenix-Award PnP Flash BIOS
SSD	Supports 1MB Flash and one socket for 512KB flash or for DiskOnChip (DOC)
Watchdog Timer	255-Level Reset
Expansion Interface	1 x 32 bit/33MHz PCI interface, 1 x 16 bit ISA base PC/104 interface
Power Requirement	+5V /3.31AA (Max)
Weight	0.188 kg (0.411 LB)
Dimension	114mm x 95mm ( 4.5 " x 3.7 ")
Operating Temperature	0~60°C(32~140°F)
Storage Temperature	-20~80°C(-4~176°F)
Operating Humidity	0% ~ 95% Relative humidity non-condensing

### I/O:

Main IO	3 x RS-232 serial ports (COM1/3/4), 1 x RS-232/485 Serial Port (COM 2) SPP/EPP/ECP mode share with Floppy, 8 bit Digital Input/ Ouput, Keybard/Mouse, 4 x USB 2.0 Compliant, 1 x IrDA 1.1 compliant, Floppy shared with parallel port, Floppy also can be impletemented on carrier boardr, Floppy can be used as an external USB Floppy
Ethernet	1 x Realtek 8100BL 10/100 bases-T 1 x Intel 82562EZ 10/100 base-T Built -in Boot ROM in Flash BIOS, Support Boof from LAN
Audio	Realtek ALC202A AC 97 Codec, support Mic-in/ Line-in/Line-out

### Display:

Chipset	Intel 852GM Extreme Graphics 2 Engin up to 64 UMA Video RAM
Interface	CRT support CRT QXGA up to 2048 x 1536 LCD support 18 /24/48-bit LVDS UXGA up to 1600 x 1200 Dual Mode support Independent dual display

### Packing list:

190040007	Cable Kit for AR-B1720
-----------	------------------------

## Ordering Information

### Standard:

010010232	AR-B1720 Standard Model without Accessory
010050082	AR-B1720 Standard Model with Accessory
AR-B1720 PM14	Intel Pentium M 1.4GHz PC/104 plus CPU card with VGA/LVDS, Dual LAN, 4 COM , and CF (Option Model, Minimum Order Quantity Required)
AR-B1720 CM10	Intel ULV Celeron M 1.0GHz PC/104 plus CPU card with VGA/LVDS, Dual LAN, 4 COM , and CF (Option Model, Minimum Order Quantity Required)

Specifications are subject to change without notice.