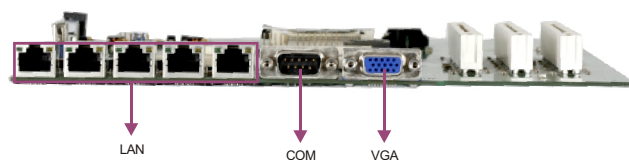
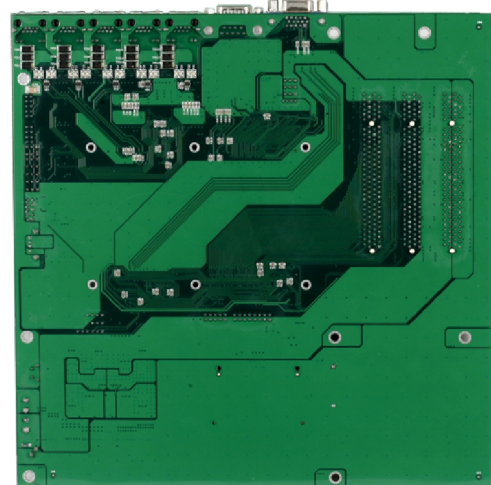
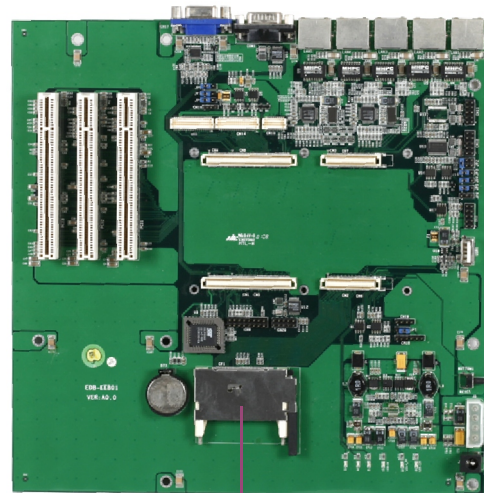


# EDB-EEB01



E<sup>2</sup>Brain Wide-temperature Base Board for EEB-3511CLD3N



CF

LAN

COM

VGA



## Features

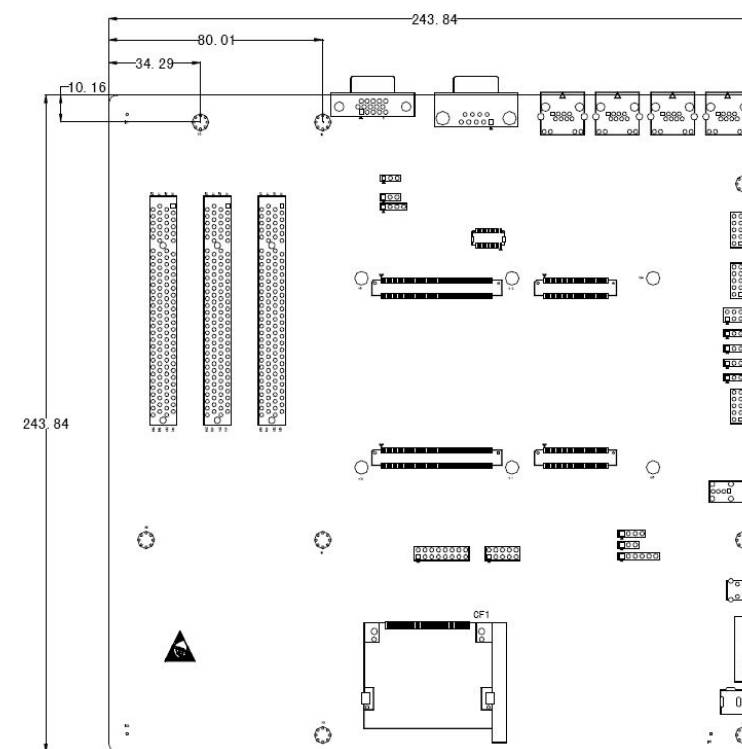
- Supports E<sup>2</sup>Brain V0.2 form factor module
- Supports VGA, LVDS, TTL LCD and Zoom Video display output
- Supports 4 x 10/100Mbps Ethernet ports
- Supports 3 x PCI expansion slot
- Supports 2 x USB, 4 x COM, 1 x CF, 1 x JTAG, 1 x CAN

## Specifications

System	
Processor	Supports E <sup>2</sup> Brain V0.2 CPU module
Chipset	Onboard 2 x Chronitel display chip
Watchdog Timer	1~255 sec./min. timer system reset/interrupt, setup by software
Expansion Interface	Supports E <sup>2</sup> Brain expansion bus and 3 x PCI expansion slot
Storage	
CF	Supports 1 x CompactFlash Socket Type I/II
I/O Interface	
USB	2 x USB Port
Serial Port	4 x RS-232 port , available interfaces of 4 x 10-pin header onboard
VGA	1 x VGA port
LVDS	1 x LVDS
LCD	1 x LVDS
Zoom Video	1 x Zoom Video

Ethernet	
Ethernet Controller	Onboard Realtek RTL8139DL Ethernet controller
Speed	10/100Mbps
Connector Interface	Supports 1 x RJ45 connector expandable via ETX bus
Mechanical and Environmental	
Dimensions	244mm x 244mm
Operating Temperature	-40 C~85 C
Storage Temperature	-55 C~125 C
Operating Humidity	5%-90%, non-condensing

## Dimensions



## Available Accessories

Part Number	Name	Description	Qty.
N/A	User Manual/RoHS	EDB-EEB01	1
2360-010011	Serial port cable/RoHS	DB9 connector to 10 Pin (2x5), length: 265mm/RoHS	4
2330-000021	Jumper/RoHS	2.54mm pitch, black	4
2391-000201	Screw/RoHS	Pan head M2.5x5/GB-T818-1985/nickel plating	6
2391-006351	Copper hex bolts/RoHS	CH-M2.5-5-3.6-Ni	6
2391-006371	Nut/RoHS	NutM2.5/GB/T6170-1986/nickel plating	6

## Related Product

Item	Typical Recommendation
E <sup>2</sup> Brain SBC Module	EEB-3511CLD3N

## Ordering Information

Part Number	Model Number	Description
0050-000900	EDB-EEB01	(YF)Backplane

1

Full-Size/Half-Size Slot CPU Cards

2

SBC/Motherboard/Modules

3

Embedded Box PC

4

Network Application Computers

5

Industrial PC

6

HMI

7

EVOC Rugged Series

8

MCC Series

9

Chassis

10

Data Acquisition Boards & Modules

11

Accessories

1

Full-Size/Half-Size Slot CPU Cards

2

SBC/Motherboard/Modules

3

Embedded Box PC

4

Network Application Computers

5

Industrial PC

6

HMI

7

EVOC Rugged Series

8

MCC Series

9

Chassis

10

Data Acquisition Boards & Modules

11

Accessories