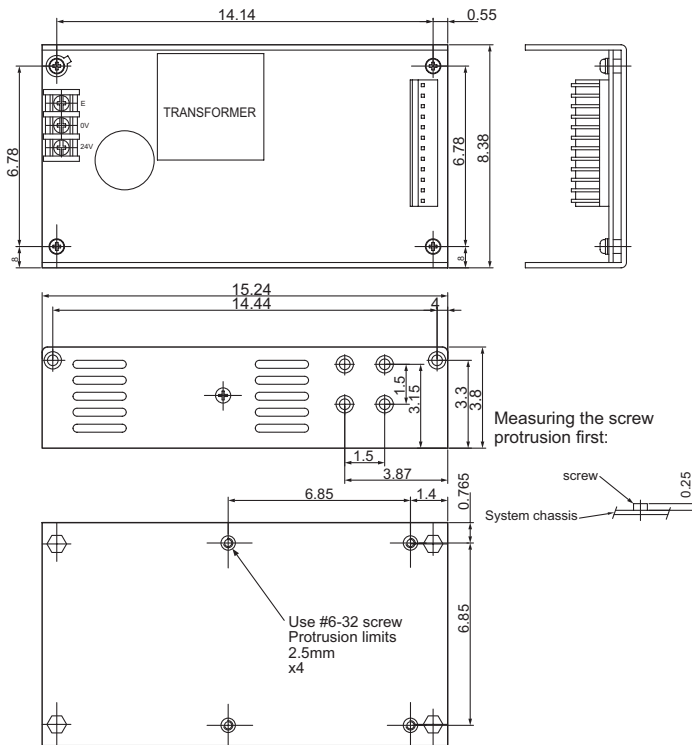


Power Supply

BPW-8210

80W 24V DC-DC Open Frame Power Supply
Input Range: 18~36VDC



★ Specifications

- * **Input Voltage:** 18~36VDC
- * **Input Current:** 7A at 24VDC max.
- * **Inrush Current:** < 10A at 24VDC input from a cold start 25°C excluding EMI suppression capacitors
- * **Load Range:** With all other outputs within their accuracy ranges and all output at 60% rated load, the +5V output is between 4.95~5.05V. Max. load can not exceed 80W convection cooling and 100W forced air cooling
- * **Ripple and Noise:** Peak to peak ripple and noise for +5V is < 50mV, and < 100mV for the other outputs at rated load, nominal line
- * **Line Regulation:** < +/-1% for each output at rated load and +/-10% of input voltage variables
- * **Load Regulation:** < +/-1% for +5V, and < +/-5% for -12V, +12V, -5V while changing measured output load from +/-40% to 60% rated load and keeping other outputs at 60% rated load
- * **Efficiency:** > 70% at DC24V and rated load
- * **Altitude:** > 10,000 feet
- * **Protection:** Built-in over voltage protection circuit. Trip point of crowbar circuit is between 5.7~7V. Hiccup mode against short circuit or over load conditions auto recovery when fault conditions are removed
- * **Temperature:** 0~50°C, can start up -20°C (operating); -40~+85°C (storage)
- * **Connectors:**
DC Input: Terminal blocks
DC Output: Molex 5273-12A
- * **Dimensions:** 15.24 x 8.38 x 3.8 cm with +/-0.8mm and +/-0.4mm tolerance between mounting holes

Pin	Output	Output	Min. Load	Rated Load	Max. Load	Tolerance
1~3	+5V	+5V	0A	10A	12A	5~5.2V
4~7	GND	+12V	0A	2A	3A	11.4~12.6V
8~9	+12V	-12V	0A	0.5A	---	-11.4~-12.6V
10	-12V	-5V	0A	0.5A	---	-5.25~-4.75V
11	-5V					
12	N/C					

Safety Standards

- * **Safety:** UL 1950, CSA 22.2 No.234, VDE EN 60 950
- * **EMI:** FCC Class B, EN55022B
- * **EMS:** Level 3 of IEC-802, 803, 804

The Industrial PC Authority



BOSER Technology Co., Ltd.

15F-6, No. 77, Hsin Tai Wu Road, Sec. 1, Hsichih, Taipei Hsien 221 Taiwan TEL : 886-2-26983333 FAX : 886-2-26983300
<http://www.boser.com.tw> <http://www.isb.com.tw> <http://www.ipc.com.tw> E-Mail: webmaster@boser.com.tw

U.S.A. TEL : +1 650 4280868 FAX : +1 650 4281172	U.K. TEL : +44 1543 466552 FAX : +44 1543 466553	KOREA TEL : +82 2 34737862 FAX : +82 2 34743120	FRANCE TEL : +33 1 69061790 FAX : +33 1 69433732	SHANGHAI TEL : 021 63676295-7 FAX : 021 63676286
GERMANY TEL : +49 221 954790 FAX : +49 221 9547988	ITALY TEL : +39 051 452042 FAX : +39 051 455046	ISRAEL TEL : +972 3 9203456 FAX : +972 3 9203535	FINLAND TEL : +358 2 6203753 FAX : +358 2 6203770	