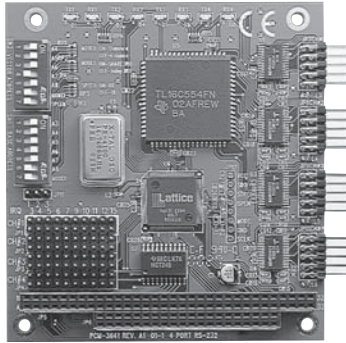


PCM-3640/3641 /3662/3680

PC/104 Communication Modules



PCM-3640/3641 4-port RS-232 High-Speed Module

Features

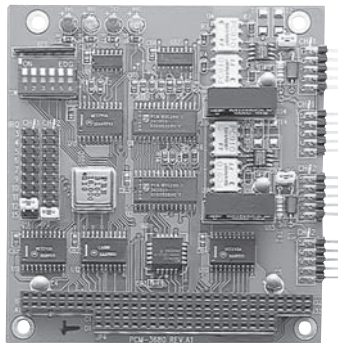
- Transmission speeds up to 460 Kbps (PCM-3641)
- Shared IRQ settings for each of 4 RS-232 ports (PCM-3641)
- Standard PC ports: COM1, COM2, COM3, COM4 compatible
- Supports Windows 95/98/NT/2000/ME/CE, Linux (ICOM utility), DOS/Windows 3.1

Specification:

- **Bus interface:** PC/104
- **Number of ports:** 4
- **I/O address:** 0 x 0200 ~ 0 x 03F8
- **IRQ:** 3, 4, 5, 6, 7, 9, 10, 11, 12, 15
- **Data bits:** 5, 6, 7, 8
- **Stop bits:** 1, 1.5, 2
- **Parity:** none, even, odd
- **Speed (bps):** 50 ~ 460.3 K (PCM-3641)
50 ~ 115.2 K (PCM-3640)
- **Connectors:** Four DB-9 male
- **Data signals:** TxD, RxD, RTS, CTS, DTR, DSR, DCD, RI, GND
- **Power requirement:**
+5 V @ 200 mA (Typical) ;
+5 V @ 250 mA (Max.)
- **Operating Temperature:** 0 ~ 65° C
(refer to IEC-68-1-1, 2)
- **Storage Temperature:** -25 ~ 80° C
- **Temperature:**
Operating: 0° ~ 65° C (32° ~ 149° F)
Storage: -40 ~ 85° C (-40 ~ 185° F)
- **Operating Humidity:** 0 % ~ 90 % Relative Humidity, non-condensing

Ordering Information

- **PCM-3641-A**
4-port RS-232 High-Speed module
- **PCM-3640-A**
4-port RS-232 module



PCM-3680 Dual-port Isolated CAN Inter- face Module

Features

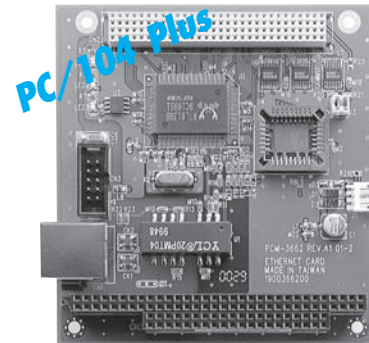
- Operates two separate CAN networks at the same time
- High speed transmission up to 1 Mbps
- Direct memory mapping enables very fast access to the CAN controllers
- C library and examples included
- DOS Library, Utility and Win 3.1/NT DeviceNet DLL drivers included

Specifications

- **Port:** 2
- **CAN controller:** SIA-1000
- **CAN transceiver:** SIA-1000
- **Signal support:** CAN_H, CAN_L
- **Memory segment base address:**
From C800H to EFO0H
- **IRQ:** 3, 4, 5, 6, 7, 9, 10, 11, 12 or 15
- **Isolation voltage:** 1000 V_{DC}
- **Power consumption:** +5 V @ 400 mA typical, 950 mA
- **Connectors:** Dual DB-9 male connectors (cable included)
- **Operating temperature:** 32° F to 122° F (0 to 50° C)
- **Dimensions:** 3.6" X 3.8"
(90mm x 96 mm)

Ordering Information

- **PCM-3680-A**
Dual-port Isolated CAN Interface Module



PCM-3662 PC/104-plus Ethernet Module

Features

- Support IEEE 802.3u Ethernet standard
- Support IEEE 802.3x Full Duplex Flow Control
- Support 10/100 Base-T Ethernet
- Support Wake-On-LAN function
- Provide 4 modes LED definition

Specifications

Software Driver support

- Windows 95/98/NT/2000 driver
- Novell server driver
- Windows for workgroups driver
- Unixware 7.0 driver
- WinCE driver for x86 platform
- Novell ODI client driver
- Novell ODI driverfor client32
- Linux driver

General

- **Power:** +5 V @ 250 mA
- **Temperature:** 0° C to 70° C (operating)
-15° C to 80° C (storage)
- **Humidity:** 10% to 90% (operating)

Ordering Information

- **PCM-3662-A**
PC/104-plus Ethernet Module