

R66A Series Non-Connectorized

Key Features

- Common clip configuration allows for termination of up to five extensions for each network cable pair
- Impact-resistant molded housings offer long life and lower maintenance costs
- Notched fanning strip for ease of wire tracing, identification, and good housekeeping
- UL Listed to meet or exceed documented performance levels

Description

R66A series non-connectorized quick-clip blocks are designed to quickly and easily terminate 25-pair twisted network cable for distribution to multiple extensions.

All six positions (columns A through F) of each clip are common. Network cable is terminated on column A. Up to five pairs can be terminated on columns B through F for distribution. Row connections follow the tip/ring alternating sequence. By using this clip configuration, with all six positions being common, as many as five extensions may be interconnected to the same network pair.

Unstripped solid 20 to 26-gauge (.4 to .8 mm) conductors can be easily terminated using an industry standard 714-type punch-down tool (Emerson R714B). Each block is supplied with an integral fanning strip molded on one side of the base, notched every ten rows to simplify pair identification.

R66A series blocks are available in 25 and 50-pair configurations. The 50-pair configuration is supplied as two 25-pair blocks in a plastic housing. The 25-pair configuration may be purchased with or without a housing. The housings, available in either gray or beige, are manufactured of the same UL rated 94 V-0 impact-resistant molded plastic as the blocks.

Application

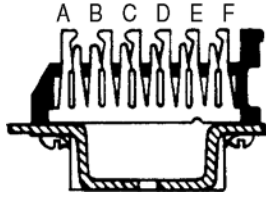
R66A series blocks provide common station features in areas remote from an equipment room.



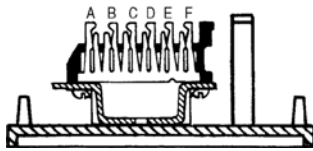
R66A325

R66A425

R66A Series Non-Connectorized

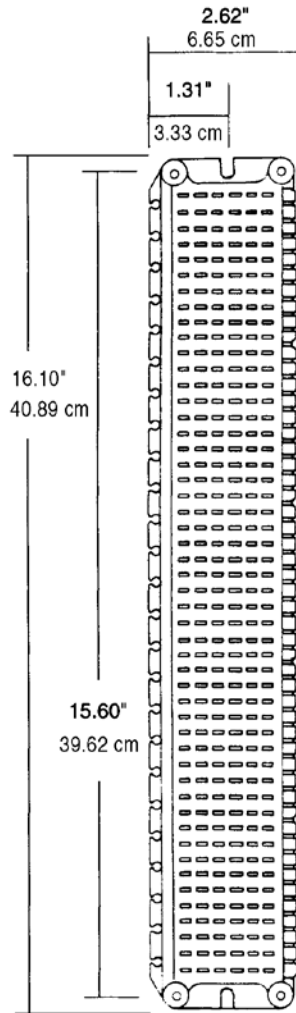


R66A325 (Side View)

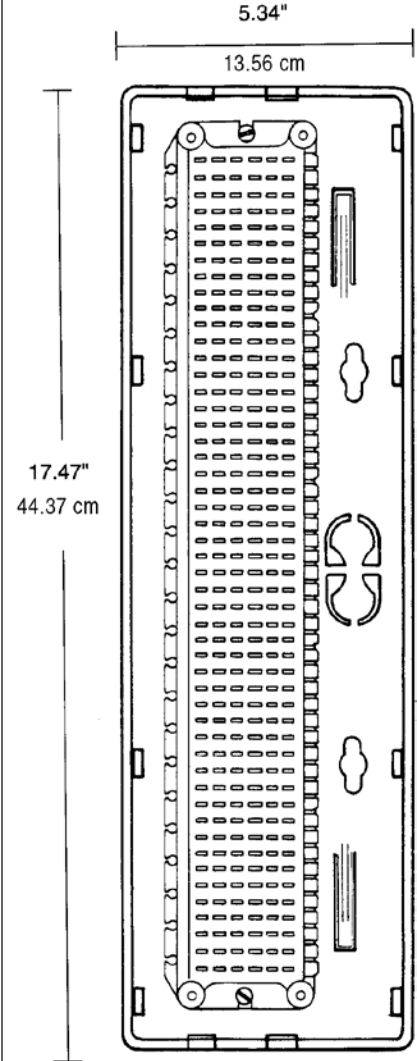


R66A425 (Side View)

R66A325
(Front View)

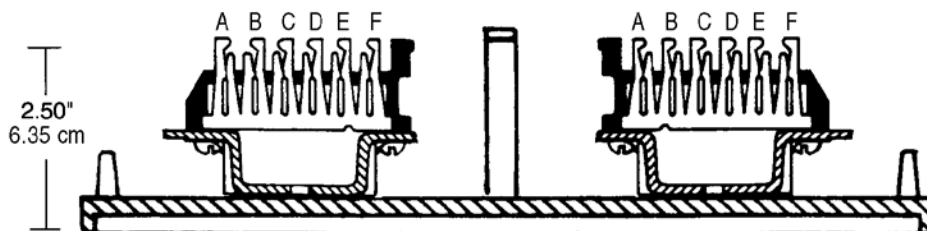
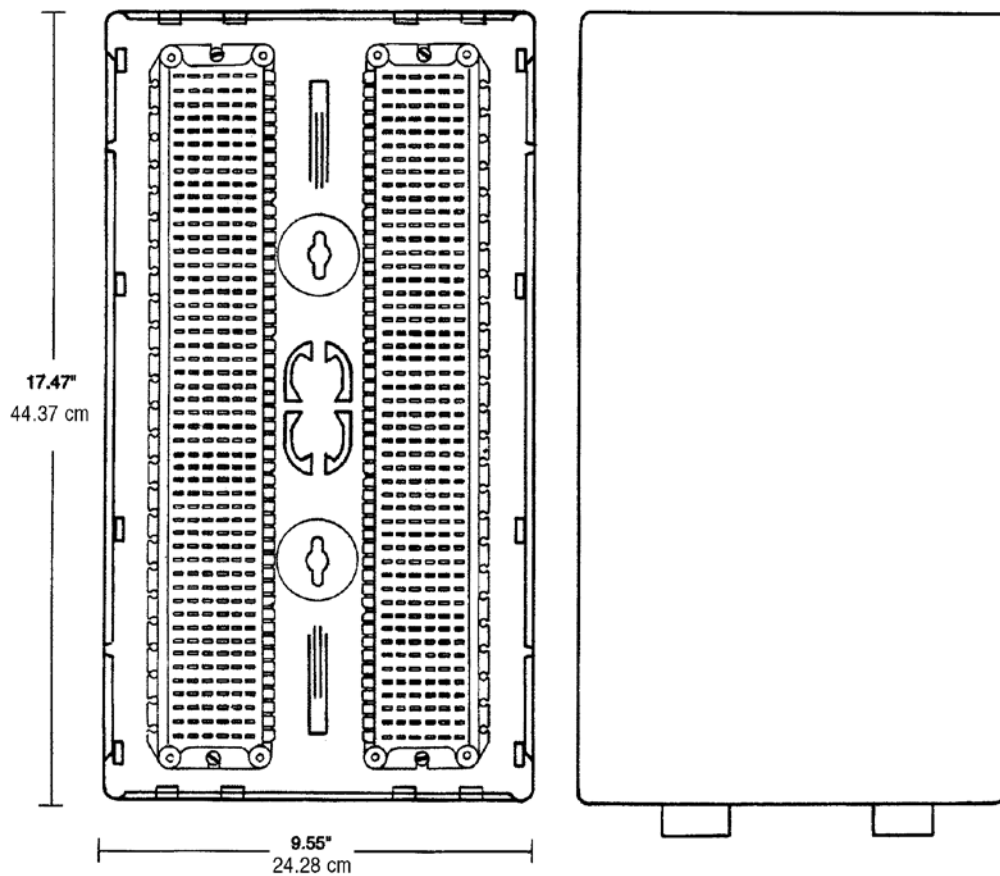


R66A425
(Front View with Base)



R66A Series Non-Connectorized

R66A450 (Front View with Cover Removed)



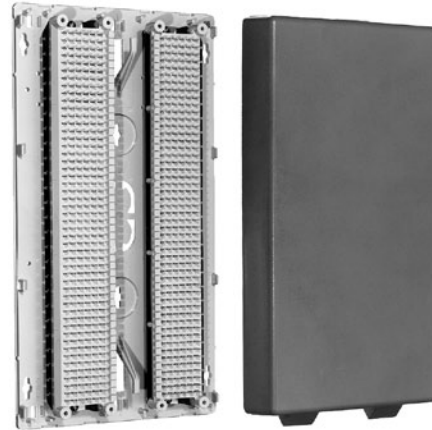
Side View

NOTE: For ordering empty base and cover housing, see R66M series ordering information.

R66A Series Non-Connectorized



R66A325



R66A450

Dimensions

Catalog Number	L	W	D
R66A325	16.10-in. (40.89 cm)	2.62-in. (6.65 cm)	1.76-in. (4.47 cm)
R66A325X	16.10-in. (40.89 cm)	2.62-in. (6.65 cm)	1.76-in. (4.47 cm)
R66A425	17.47-in. (44.37 cm)	5.34-in. (13.56 cm)	2.50-in. (6.35 cm)
R66A425B	17.47-in. (44.37 cm)	5.34-in. (13.56 cm)	2.50-in. (6.35 cm)
R66A450	17.47-in. (44.37 cm)	9.55-in. (24.26 cm)	2.50-in. (6.35 cm)
R66A450B	17.47-in. (44.37 cm)	9.55-in. (24.26 cm)	2.50-in. (6.35 cm)

NOTE: Housing height is 2.5-in. (6.35 cm).

Ordering Information

Catalog Number	Part Number	Description	Common Clips	Std. Pkg.	Ship Wt. (lb./kg)
R66A325	F015000	25-pair A block without base and cover	6	25	45/20
R66A325X	F015001	25-pair A block without base and cover bulk pack	6	40	70/32
R66A425	F015005	25-pair A block w/base and gray cover for (1) 25-pair cable	6	5	27/12
R66A425B	F015010	25-pair A block w/base and beige cover for (1) 25-pair cable	6	5	27/12

NOTE: See R66M Series for empty housings.

Emerson Network Power.

The global leader in enabling
Business-Critical Continuity™.

- AC Power
- Embedded Power
- Precision Cooling
- Connectivity
- Infrastructure Management & Monitoring
- Racks & Integrated Cabinets
- DC Power
- Outside Plant
- Services
- Embedded Computing
- Power Switching & Controls
- Surge Protection

Emerson Network Power Energy Systems

4350 Weaver Parkway, Warrenville, IL 60555
Toll Free: 800-800-1280 (USA and Canada)
Telephone: 440-246-6999 Fax: 440-246-4876
Web: EmersonNetworkPower.com/OSP

© 2010 Emerson Network Power Energy Systems,
North America, Inc. All rights reserved.

Emerson®, Emerson Network Power™, *Business-Critical Continuity™*,
NetReach™, NetSpan™ and NetXtend™ are trademarks of
Emerson Electric Co. and/or one of its subsidiaries.

Printed in USA

