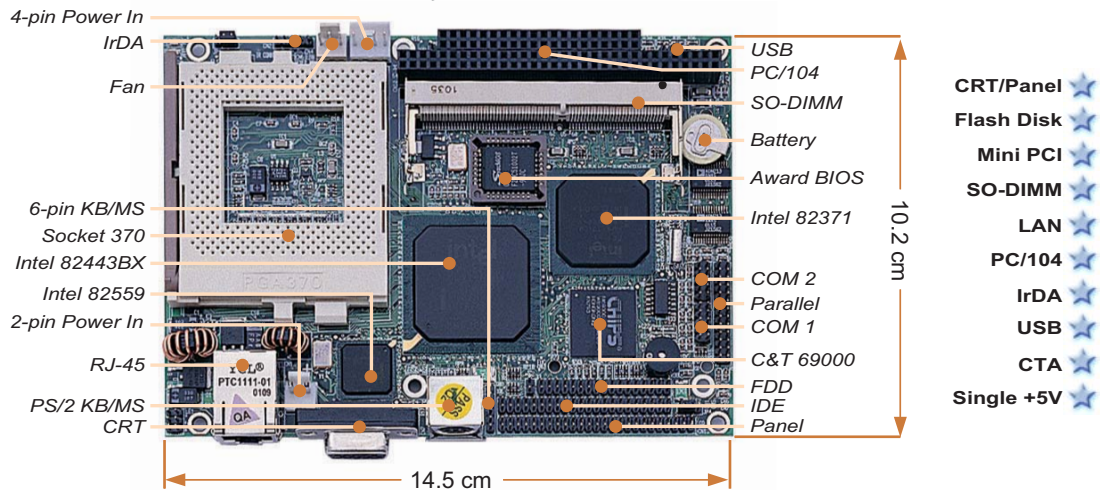


HS-2601

Socket 370 Embedded Engine Board with Flash Disk, CRT/Panel & LAN



Features

Socket 370 for Intel Celeron/Coppermine 300~850MHz CPU
Mini PCI Local Bus support
Intel 82443BX/82371 system chipset
One SO-DIMM socket with a max. capacity of 256MB
Winbond W83977 super I/O chipset
Two RS-232 serial ports

PC/104 Bus connector
C&T 69000 CRT/Panel display controller
Intel 82559 10/100 Based LAN
Two USB connectors
Supports Single +5V power in
Supports CPU Temperature Alarm function
Onboard 8~64MB Flash Disk (optional)

Specifications

- * **CPU:** Socket 370 for Intel Celeron/Coppermine 300~850MHz CPU
- * **Bus Interface:** Mini PCI Local Bus
- * **Memory:** One SO-DIMM socket supporting up to 256MB
- * **Chipset:** Intel 82443BX/82371
- * **I/O Chipset:** Winbond W83977
- * **Flash Disk:** Supports 8~64MB IDE interface Flash Disk (optional)
- * **VGA:** C&T 69000 with 2MB memory supporting CRT/Panel displays up to 1280 x 1024 at 256 colors
- * **LAN:** Intel 82559 10/100 Based LAN
- * **IDE:** Two IDE disk drives supporting ATA/33 and with a transfer rate of up to 33MB/sec.
- * **FDD:** Supports up to two floppy disk drives
- * **Parallel:** One enhanced bi-directional parallel port supporting SPP/ECP/EPP
- * **Serial Port:** 16C550 UART-compatible RS-232 x 2 serial ports with 16-byte FIFO

- * **PC/104:** PC/104 connector for 16-bit ISA Bus
- * **IrDA:** One IrDA TX/RX header
- * **USB:** Two USB connectors
- * **Keyboard/Mouse:** PS/2 6-pin Mini DIN or 6-pin header
- * **BIOS:** Award PnP Flash BIOS
- * **CMOS:** Battery backup
- * **DMA Channels:** 7
- * **Interrupt Levels:** 15
- * **Power:** +5V/6A, +12V
- * **Operating Temperature:** 0~60° C
- * **CPU Temperature Alarm:** LM75 or equivalent device
- * **Board Size:** 14.5 x 10.2 cm

Single +5V!!

Ordering Guide

HS-2601 Socket 370 Embedded Engine Board with CRT/Panel & LAN

The Industrial PC Authority



BOSER Technology Co., Ltd.

15F-6, No. 77, Hsin Tai Wu Road, Sec. 1, Hsichih, Taipei Hsien 221 Taiwan TEL : 886-2-26983333 FAX : 886-2-26983300
http://www.boser.com.tw http://www.isb.com.tw E-Mail: webmaster@boser.com.tw

U.S.A.
TEL : +1 650 4280868
FAX : +1 650 4281172

U.K.
TEL : +44 1543 466552
FAX : +44 1543 466553

GERMANY
TEL : +49 221 954790
FAX : +49 221 9547988

KOREA
TEL : +82 2 34737862
FAX : +82 2 34743120

JAPAN
TEL : +813 34248120
FAX : +813 34180521

ISRAEL
TEL : +972 3 9203456
FAX : +972 3 9203535

FRANCE
TEL : +33 1 69061790
FAX : +33 1 69433732

FINLAND
TEL : +358 2 6203753
FAX : +358 2 6203770

SHANGHAI
TEL : 021 63676295-7
FAX : 021 63676286