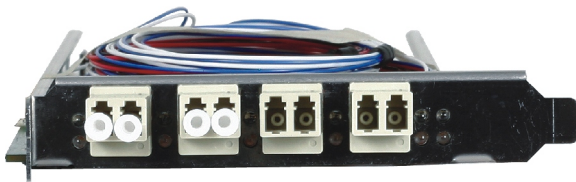
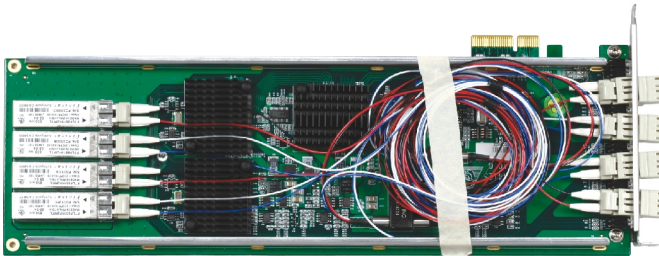
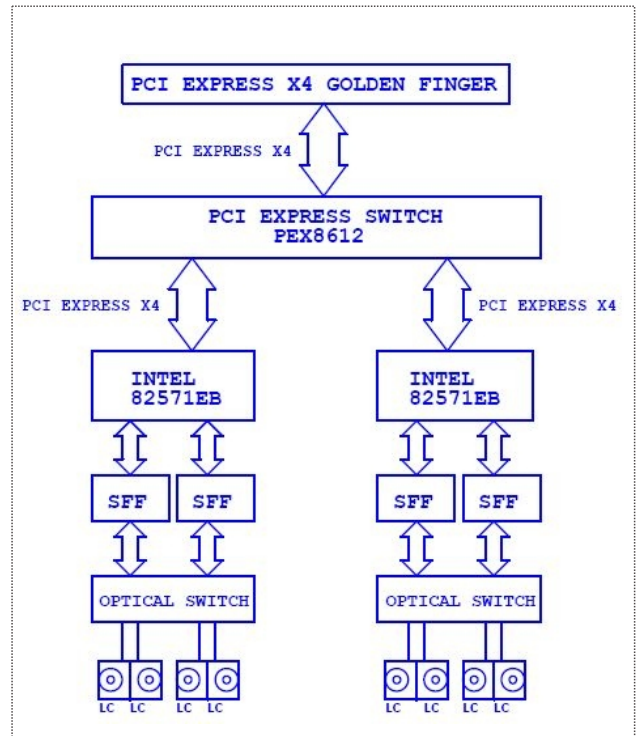


# ENC-4412S

GBIC Module Supports 4 x Optical-fiber LAN



## Board Diagram



## FEATURES

- PCI-E x4 gold finger ports
- Onboard 2 x Intel® 82571EB/GB network chip
- Extended 4 x Gigabit fiber port
- Supports Bypass function

## SPECIFICATIONS

System	
Chipset	2 x Intel® 82571EB/GB network chip
I/O Interface	PCI-E x4 slot
Connector	4 x optical-fiber port
EMC	EMCA-compliant
Dimensions	312.00mm x 106.65mm
Operating Temperature	-0°C ~60°C
Storage Temperature	-20°C - 80°C
Operating Humidity	5%-90%, non-condensing
Reliability	MTBF ≥ 50000h; MTTR ≤ 0.5h.
Vibration	Frequency (5~200Hz), acceleration (1g), amplitude (0.5mm)

## Available Accessories

Part Number	Model Number	Description
2413-012871	ENC-4412S/VER:A0	User manual/Chinese and English/RoHS
2192-007731	ENC-4412S/VER:A0	Driver/protective film/ Chinese and English /RoHS

## Ordering Information

Part Number	Model Number	Description
0070-001700	ENC-4412S	Onboard four gigabit optical-fiber ports
0070-001701	ENC-4412S	Onboard four gigabit optical-fiber ports