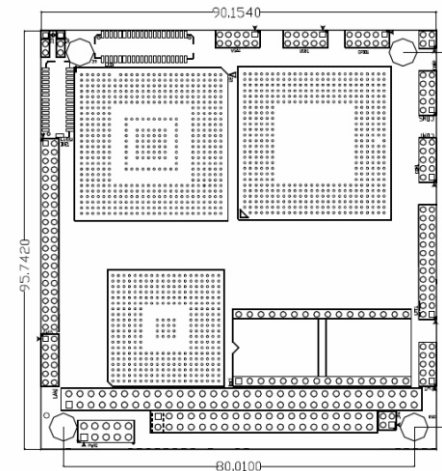
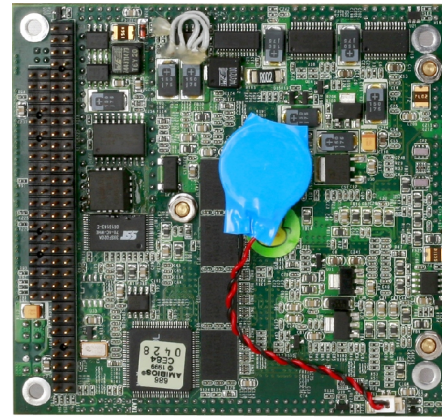
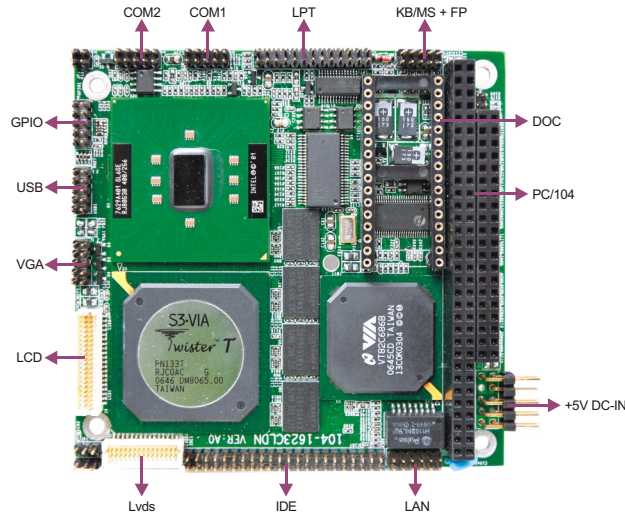


104-1623CLDN

P3 Series SBC with CPU and Memory/LVDS/VGA/LCD/SSD/LAN



Features

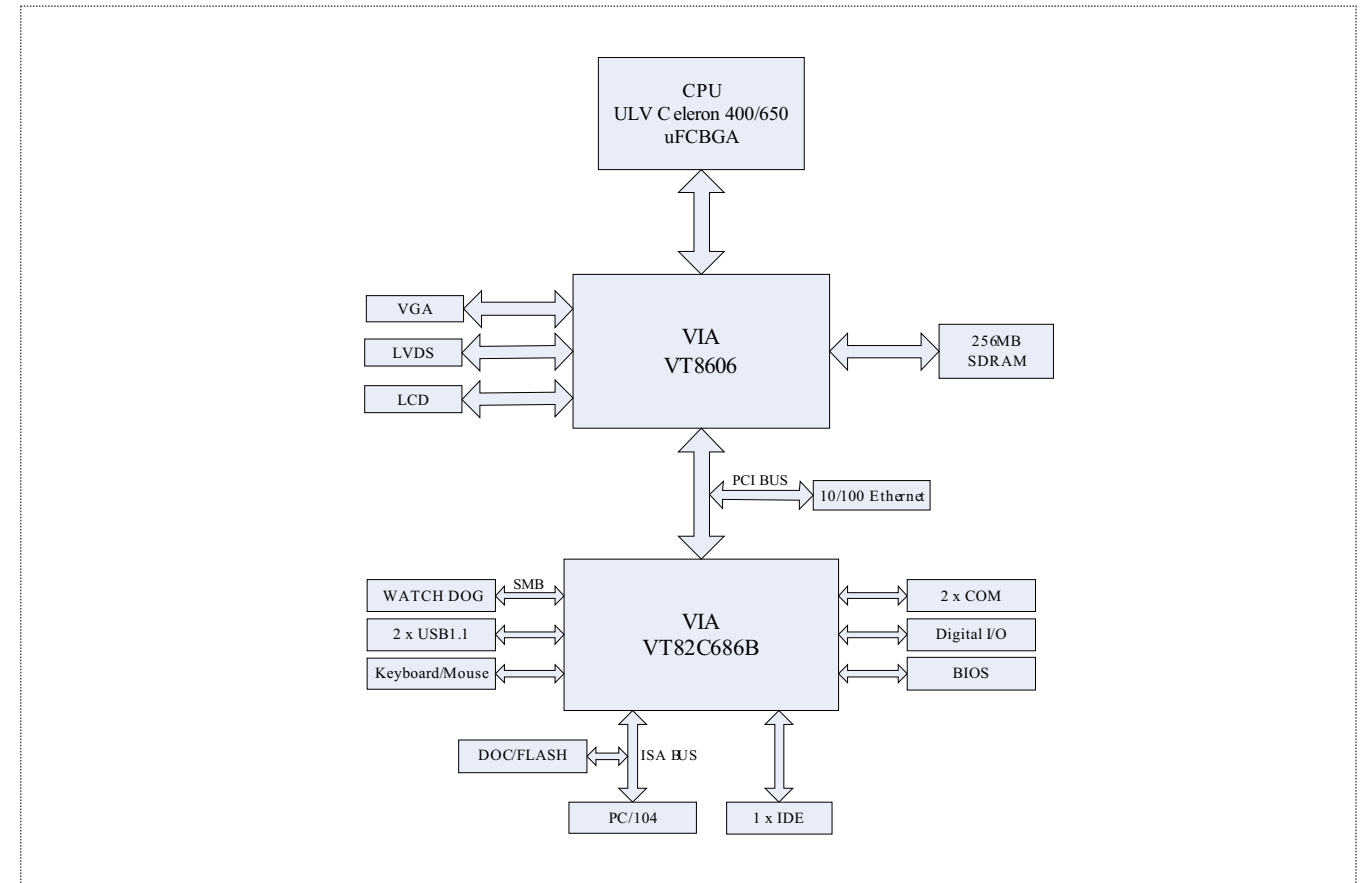
- Supports Intel® ULV Celeron® 400MHz processor (650MHz optional)
- Onboard 256MB SDRAM
- One 10/100Mbps Ethernet controller
- Supports VGA and LCD, 18/24-bit TFT LVDS
- PC/104 expansion bus
- 8-channel digital input and digital output
- Two serial ports, one parallel port, two USB ports

Specifications

System	
Processor	Onboard Intel® ULV Celeron® 400MHz processor (650MHz optional)
Chipset	VIA Twister chipset, VT8606+VT82C686B, supporting 60/100/133MHz FSB
Memory	Onboard 256MB SDRAM
Watchdog Timer	Software programmable supports 1~255 sec./min. System reset/interrupt
Expansion Interface	ISA bus, standard PC/104 bus interface
Storage	
IDE	1 x 44 pin ATA100/66 IDE interface, supporting 2 x IDE device
DOC	1 x DOC/Flash socket
I/O Interface	
USB	2 x USB1.1 port, one onboard USB header provides two extra ports
Serial Port	2 x serial port, COM2 supports RS-232/485
Parallel Port	1 x LPT
Keyboard/Mouse	1 x PS/2
GPIO	4-channel digital input & output TTL level interface

Onboard Video	
Chipset	Integrated Savage4 2D/3D graphics acceleration controller
Memory	Shared system memory, 8MB/16MB/32MB
Display	Supports VGA and LCD, 18/24-bit TFTLVDS; supports dual-display
Ethernet	
Chipset	1 x Realtek RTL8139DL Ethernet controller
Speed	10/100Mbps
Connector	1 x LAN port, available interface of 10-Pinheader onboard
Mechanical and Environmental	
Dimensions	96mm x 90mm
Operating Temperature	-40°C~85°C
Operating Humidity	5%-95%, non-condensing
Power	
Power Supply	+5V single power supply
Power Consumption	Typical 9.8W (Intel/ULV Celeron 400Mhz, 256MB memory)
Operating System	
Windows OS	Windows NT 4.0/Windows98SE/ Windows 2000/ WindowsXP
Embedded OS	Linux/XP Embedded

Board Diagram



Available Accessories

Part Number	Name	Description	Qty.
2192-003591	Driver CD/Pressed film/RoHS	104-1623CLDN/VER:A0	1
2330-000011	Jumper/RoHS	2.0mm pitch	7
2360-008781	HDD cable/RoHS	40-pin to 44-pin (2.0mm pitch), length: 550mm/RoHS	1
2360-011221	Parallel port cable/RoHS	DB25 connector to 26-pin (2x13) connector (2.0mm pitch), length: 300mm/RoHS	1
2360-011231	Serial port cable/RoHS	DB9 connector to 10-pin (2x5) connector (2.0mm pitch), length: 300mm/RoHS	2
2360-012641	VGA cable/RoHS	VGA connector to 10-pin (2x5) connector (2.0mm pitch), length: 300mm/RoHS	1
2360-012651	Power cable/RoHS	One male power 4-pin (5.08mm pitch) connector to 10-pin (2x5), length: 250mm/RoHS	1
2360-014781	Dual USB ports with bracket/RoHS	Two USB ports to one 10-pin (2x5) connector (2.0mm pitch), length: 550mm/RoHS	1
2360-017471	Parallel flat cable/RoHS	Two ports 2x6-pin connector (2.0mm pitch), length: 250mm	1
2360-017481	Multi-functional Conversion cable/RoHS	Buzzer reset button dual PS 2 connectors to 2x5-pin 2.0mm pitch female connector, length: 250mm	1
2412-000311	Setup Guide/RoHS	AMI/BIOS Setup Guide (for CORE/7) former/VER: A0	1
2413-005551	User's Manual/Chinese/RoHS	104-1623CLDN/VER: A2	1

Ordering Information

Part Number	Model Number	Description
0030-001010	104-1623CLDN	Motherboard
0030-010451	104-1623CLDN/TB/Conformal coating	Motherboard/RoHS/TB/Conformal coating
0030-004400	104-1623CLDN/Conformal coating	Motherboard/Conformal coating

1

Full-Size/Half-Size Slot CPU Cards

2

SBC/Motherboard/Modules

3

Embedded Box PC

4

Network Application Computers

5

Industrial PC

6

HMI

7

EVOC Rugged Series

8

MCC Series

9

Chassis

10

Data Acquisition Boards & Modules

11

Accessories

1

Full-Size/Half-Size Slot CPU Cards

2

SBC/Motherboard/Modules

3

Embedded Box PC

4

Network Application Computers

5

Industrial PC

6

HMI

7

EVOC Rugged Series

8

MCC Series

9

Chassis

10

Data Acquisition Boards & Modules

11

Accessories