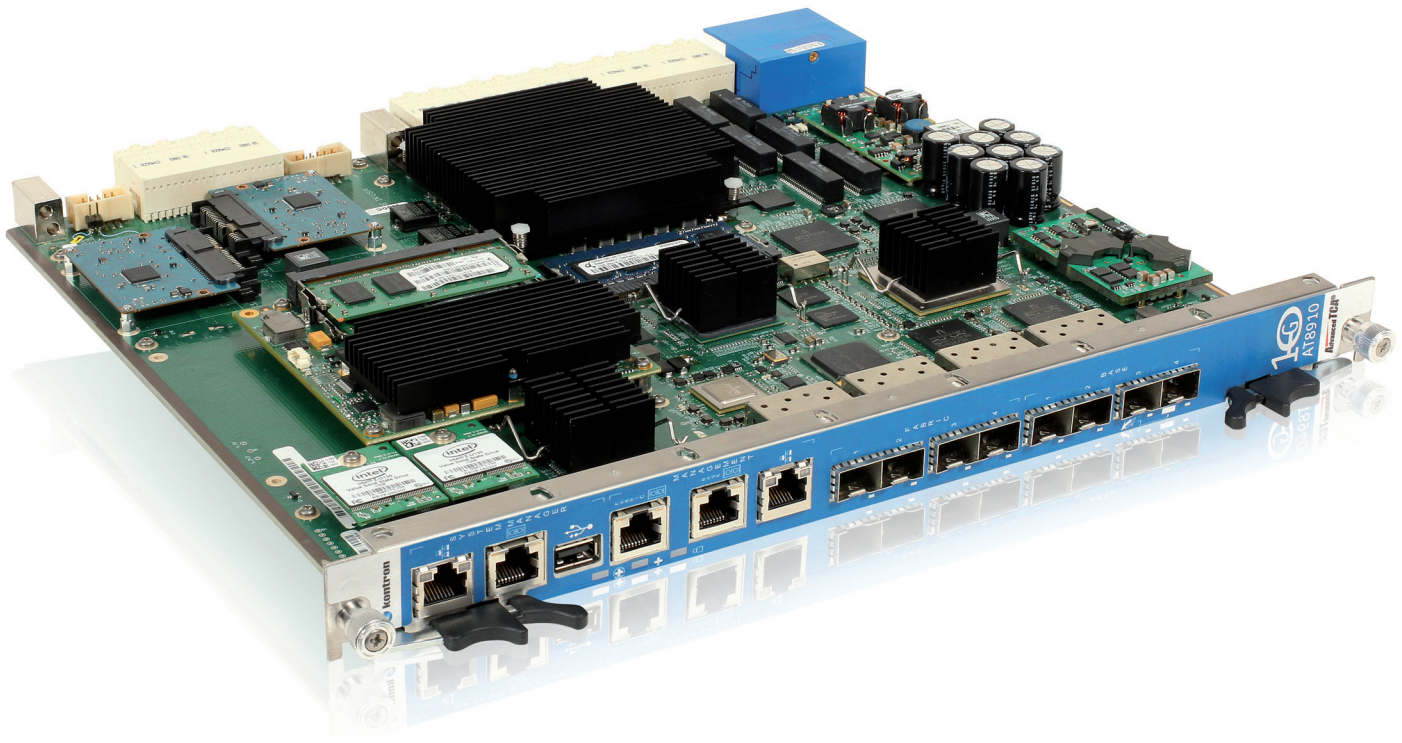


» AT8910 «



Second generation 10G ATCA Switch with 320 Gbps non-blocking switching bandwidth ideal for 4G LTE, 3G and Data Center Networks

- » Support for 14x 10GbE nodes and one redundant hub meeting NEBS and ETSI standards
- » Centralized system management with optional functionality based on the COMexpress form factor
- » Separate switch silicon for Base and Fabric interface
- » 4x 10GbE Front Fabric Uplinks;
4x 10GbE Front Base Uplinks
- » 1x GE Mgmt. and 2x Serial Console
- » Support for Synchronous Ethernet on RTM
- » Optional integration Wind River Hypervisor



- » Validated with OM9141-10G Open Modular Core Platform

AT8910

Next Generation 10 GbE ATCA Switch

Technical Information

10G Fabric Interface

- Broadcom StrataXGS®IV Metro Ethernet Switch Architecture
- Broadcom BCM56842 high performance Ethernet Multilayer Switch:
 - o 320Gbps Switching Capacity;
 - o Support of up to 14 Fabric IF 10GBase-BX4 (XAUI) or 1GBase-BX;
 - o Support one port 10G HUB interlink to backplane at 10GBase-BX4 (XAUI) or 1GBase-BX.
- Support of 4 10G interfaces to RTM
- Support of 4 1G/10G SFP+ front uplinks with 10GBase-SR/LR/LRM/ direct attach copper cables
- SFP+ monitoring
- SyncE and BroadSync(tm) interface connection to FPGA for future usage

Base Interface

- Broadcom StrataXGS®IV Metro Ethernet Access Switch Architecture
- Broadcom BCM56334 24-Port GbE Ethernet Multilayer Switch with 4 10GbE Uplinks:
 - o 14 Base Interface ports running at 10/100/1000Base-T/TX/T;
 - o One Hub interlink running at 10/100/1000Base-T/TX/T.
- One port configurable either as Hub interlink via Update Channel or IPMC link for IPMI/Serial over LAN
- Hub interlink running at 1000Base-BX
- ShMC A/B connect running at 10/100Base-T/TX
- 4 1G/10G SFP+ front uplinks with 10GBase-SR/LR/LRM/ direct attach copper cables
- 3 RTM uplinks running at 10/100/1000Base-T/TX/T (SGMII) or 1000Base-x (Fiber)
- SFP/SFP+ monitoring
- One port connected to Unit Computer running at 1000Base-BX
- One port connected to System Manager running at 1000Base-BX
- Dual-core Freescale P2020 1000MHz processor
- 1GB DDR3 SODIMM; 2x 128MByte NOR FLASH with dual Image Support
- Windriver Hypervisor running Windriver Linux as guest OSs on each core

Unit Computer and System Memory

Switch Management Software

Broadcom FASTPATH®

- Base package including switching, Quality of Service and Management Switching protocols and functions including Ethernet Multicast (GVRP, GARP, RSTP, LAG, IGMP Snooping, DiffServ, ACL ...)
- IPv4 unicast and multicast routing:
 - o unicast forwarding protocols & functions (ARP, OSPF, VRRP, RIP...);
 - o multicast forwarding protocols & functions (PIM-DM, PIM-SM, DVMRP, IGMP ...).
- IPv6 unicast and multicast routing: IPv6 unicast forwarding protocols and functions (discovery, OSPFv3, MLD, 6to4/4to6 tunneling)
- Switching protocol support:

<ul style="list-style-type: none"> o Virtual LAN's per IEEE 802.1Q-2005; o Link aggregation load sharing; o Tag based IEEE 802.1p frame priority; o Rapid Spanning Protocol (RSTP); o GARP VLAN Registration Protocol (GVRP); o Multiple Spanning Tree Protocol (MSTP); o Group addresses according to IEEE 802.1; o Flow control; o Support for GMRP; o Link Layer Discovery Protocol (LLDP); o Link Aggregation (LAG) o Link Aggregation Control Protocol (LACP); 	<ul style="list-style-type: none"> o IGMPv3 snooping; o Dynamic Host Configuration Protocol (DHCP); o SNMP, Telnet, TFTP, DHCP, SSH, SFTP, ICMP-echo (ping); o SNMPv3; o Address Resolution Protocol (ARP); o Trivial File Transfer Protocol (TFTP); o Reverse Address Resolution Protocol (RARP); o Secure Shell (SSH); o Internet Control Message Protocol (ICMP) o Simple Network Management Protocol (SNMP); o Internet Group Management Protocol (IGMP).
---	--

Kontron Software Feature Extensions

- Ethernet Switching:
 - o Meshed multicast, multicast and RSTP interoperability, same port bridging, link aggregation, LLDP, lossless Ethernet
- IP Routing:
 - o IPinIP tunneling, automatic tunnel failover, multicast
- Management Enhancements:
 - o Access control lists, monitoring, SNMP, provisioning, KEX control API, diagnostics, reliable field upgrades, location based DHCP server, file services, watchdog, real time clock.
- Enhanced Optical/Copper module support:
 - o XFP, SFP+, SFP, auto detection and selection
- Wind River Hypervisor support for FASTPATH BSP

Technical Information

I/O Interfaces

Front: 1 SFP+ cage to support multi-rate fiber SFP+ modules

Front: RJ45 for RS232 access to Processor

IPMI

PICMG 3.0 / PICMG 3.1 / HPM.1 / IPMI 2.0 compliant

IOL/SOL support

Temperature, Current and Voltage Sensors

Support

RTM8940 Rear Transition Module (RTM)

Up to 80Gbps uplink capability on Fabric Interface:

- o 2x QSFP configured as (2x 40G; AT8940 only) or 8x 10G uplinks using 2 active copper cables;
- o 1x QSFP configured as (1x 40G; AT8940 only) or 4x 10G and 4x SFP+ uplinks;
- o Telco clocking is standard;
- o Option to remove the QSFP uplinks and/or Telco clocking is available on demand.

Support for 2x SFP 1 GbE uplinks on Base Interface:

- o 1000Base-SX/LX Optical Modules;
- o 10/100/1000Base-T Copper Module.

Master Clock Generator with Stratum 3 accuracy and SyncE support:

- o 2x ETSI T3 E1/T1 BITS input/outputs;
- o 2x ETSI T4 E1/T1 Upstream/Downstream Chassis Clock Support;
- o ATCA Synchronisation Clock Support CLK1 A/B, CLK2 A/B, CLK3 A/B;
- o Clock Synchronisation to MCG of redundant HUB/RTM.

AMC like Management Interface

System Manager

Support for basic and micro COM Express ETX Modules with Type 1 connector, according COMExpress 0 R1.0

Management connection to System Manager via RS232 front RJ45, or 10/100/1000Base-T front RJ45

Front panel USB port

Support of ETX modules up to 30W

Additional Ethernet Connection to Base IF and redundant HUB

Support on-board for JEDEC SerialATA M0-297 SSD

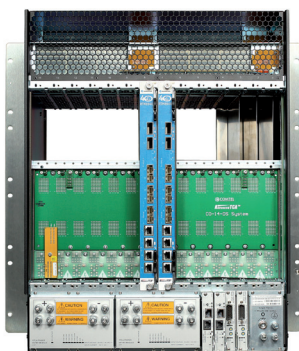
Support for RTM SATA applications

Support on-board of up to 2 eUSB Flash Modules

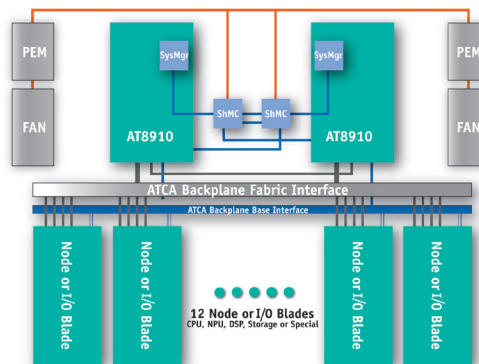
Power

ATCA compliant Power Input System

Total power is below 220 W



RTM8940 Rear Transition Module (RTM)



OM9141 – 10G Open Modular Core Platform connectivity

Technical Information

Environmental

Temperature*	Operating: 0-55°C/32-131°F with 30CFM airflow Storage and Transit: -40 to +70°C/-40 to 158°F
Humidity*	Operating: 15% to 90% @55°C/131°F non-condensing Storage and Transit: 5% to 95% @ 40°C/104°F non-condensing
Altitude*	Operating: 4,000 m / 13,123 ft Storage and Transit: 15,000 m / 49,212 ft
Shock*	Operating: 3G each axis Storage and Transit: 18G each axis
Vibration*	Operating: 5-200Hz. 0.2G, each axis Storage and Transit: 5Hz to 20Hz @ 1 m2/s3 (0.01g2 /Hz) (flat) 20Hz to 200Hz @ -3dB/oct (slope down)

Reliability

MTBF to meet or exceed approximately 280,000 hours

Whole board protected by active breaker

USB voltage protected by an active breakers

Safety / EMC

Meet or exceed:

Safety: UL 60950-1; CSA C22.2 No 60950-1-03; EN 60950-1:2001; IEC60950-1;
EMI/EMC: FCC 47 CFR Part 15, Class B; CE Mark to EN55022/EN55024/EN300386

Warranty

Two years limited warranty

* Designed to meet or exceed.

CORPORATE OFFICES

Europe, Middle East & Africa

Oskar-von-Miller-Str. 1
85386 Eching/Munich
Germany
Tel.: +49 (0)8165/ 77 777
Fax: +49 (0)8165/ 77 279
info@kontron.com

North America

14118 Stowe Drive
Poway, CA 92064-7147
USA
Tel.: +1 888 294 4558
Fax: +1 858 677 0898
info@us.kontron.com

Asia Pacific

17 Building, Block #1, ABP.
188 Southern West 4th Ring Road
Beijing 100070, P.R.China
Tel.: + 86 10 63751188
Fax: + 86 10 83682438
info@kontron.cn