

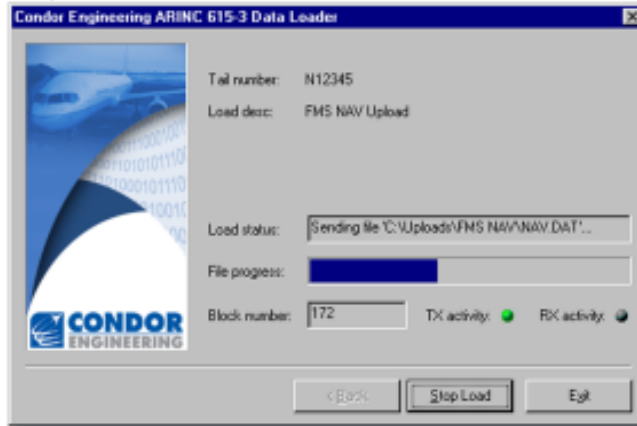
SINGLE-SESSION FEATURES

- > Integrated hardware and software solution
- > ARINC 615-3/603 data loader functionality for Windows XP, 2000, Me, NT, 98 or 95
- > Streamlined, simple-to-use interface designed specifically for aircraft maintenance applications
- > Can be configured to support user logins, intuitive load selection, and load history tracking
- > Detailed progress and status indicators
- > Eliminates need for disk-swapping
- > Portable (PCMCIA, PC/104), and factory or lab (PCI, CompactPCI, PC/AT, PMC) hardware platforms
- > CEI-220, -420A, -520A, -620, -710, -715, and -830 hardware supported
- > ARINC 615 Data Loader cabling available

Product includes Single, Multi-Session and Administrator GUI applications.

Turn over to review multi-session features.

Single-Session Interface



Now available in bundled solutions with PCMCIA card, CEI-DL software and ARINC 615 data loader cables.

The streamlined, single-session interface of the CEI-DL data loader software from Condor Engineering provides intuitive Windows-based ARINC 615-3/603 data loading across a variety of Condor ARINC 429 devices. The single-session software loads one ARINC 615-3/603 compatible LRU at a time, allowing for seamless integration into most traditional aircraft maintenance applications. Since data sets can be retrieved from any location accessible by the host machine (including local and network drives), the Condor data loader eliminates the need for disk-

swapping while providing improved configuration management.

When combined with Condor's CEI-715 PCMCIA ARINC 429 interface hardware, the easy-to-use single-session CEI-DL software delivers a powerful portable solution potentially capable of streaming upload data via a wireless LAN connection (user-specific). Designed specifically for aircraft maintenance applications, this software presents a simple, intuitive interface that guides the user through data set selection and the load process. Most of the single-session software features are customizable via an administrator-controlled configuration file, enabling the software functionality to be easily tailored to specific customer applications.

AVAILABLE CONFIGURATIONS

- CEI-DL** ARINC 615 Data Loader software
- CEI-715-DL** ARINC 615 Data Loader bundle: PCMCIA card with 4 Rx, 4 Tx ARINC 429 channels; CEI-DL Data Loader s/w; and 30" cable to single DB37 connector.
- CEI-715-DL-2** ARINC 615 Data Loader bundle: PCMCIA card with 4 Rx, 4 Tx ARINC 429 channels; CEI-DL Data Loader s/w; cable to DB37 connector; and ARINC 615/603 two cable set.
- CEI-715-DL-BT-2** ARINC 615 Data Loader bundle: PCMCIA card with 4 Rx, 4 Tx ARINC 429 channels; CEI-DL Data Loader s/w; cable



101 W. Anapamu Street, Santa Barbara, CA 93101
Tel 805.965.8000 • Fax 805.963.9630

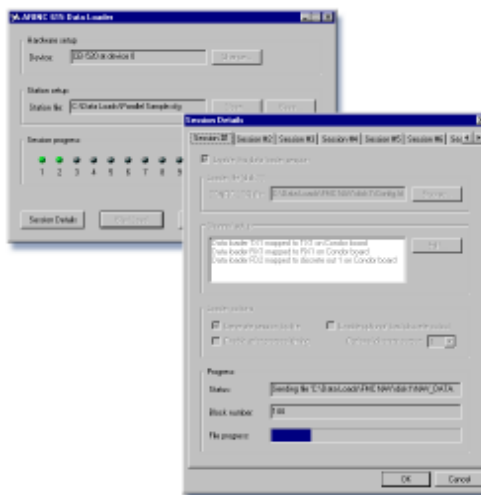
MULTI-SESSION FEATURES

- > Integrated hardware and software solution
- > ARINC 615-3/603 data loader functionality for Windows XP, 2000, Me, NT, 98 or 95
- > Up to 16 simultaneous sessions from a single, easy-to-use interface using Condor ARINC 429 hardware
- > Portable (PCMCIA, PC/104), and factory or lab (PCI, CompactPCI, PC/AT, PMC) hardware platforms
- > Save and restore multi-session configuration information
- > Session-specific progress and status indicators
- > Eliminates need for disk-swapping
- > Low-level traffic and protocol status information can be logged to disk for later analysis
- > Flexible control of protocol timeout values
- > CEI-220, -420A, -520A, -620, -710, -715 and -830 hardware supported

Product includes Single, Multi-Session and Administrator GUI applications.

Turn over to review single-session features.

Multi-Session Interface



Now available in bundled solutions with PCMCIA card, CEI-DL software and ARINC 615 data loader cables.

The multi-session interface of the CEI-DL software from Condor Engineering is integrated with multiple hardware platforms to provide Windows-based ARINC 615-3/603 data loading of operational programs and database software. Supported on PCI, CompactPCI, PMC, PC/104, PC/AT and PCMCIA platforms, this flexible application software provides both an easy-to-use portable solution and a robust, multiple-unit, factory or lab

station. Condor's CEI-DL data loader solution can be used for development, test, flightline, and maintenance applications. From a straight-forward GUI interface, our multi-session integrated hardware/software solution supports up to 16 simultaneous upload or download sessions with ARINC 615/603 compatible LRUs. The CEI-DL software also provides useful data loading features including: simplified device selection; saving and restoring session configuration information; traffic and protocol logging; session-specific progress and status indicators.

AVAILABLE CONFIGURATIONS

- | | |
|------------------------|---|
| CEI-DL | ARINC 615 Data Loader software |
| CEI-715-DL | ARINC 615 Data Loader bundle: PCMCIA card with 4 Rx, 4 Tx ARINC 429 channels; CEI-DL Data Loader s/w; and 30" cable to single DB37 connector. |
| CEI-715-DL-2 | ARINC 615 Data Loader bundle: PCMCIA card with 4 Rx, 4 Tx ARINC 429 channels; CEI-DL Data Loader s/w; cable to DB37 connector; and ARINC 615/603 two cable set. |
| CEI-715-DL-BT-2 | ARINC 615 Data Loader bundle: PCMCIA card with 4 Rx, 4 Tx ARINC 429 channels; CEI-DL Data Loader s/w; cable |

