

New QuickPanel™ with Ethernet

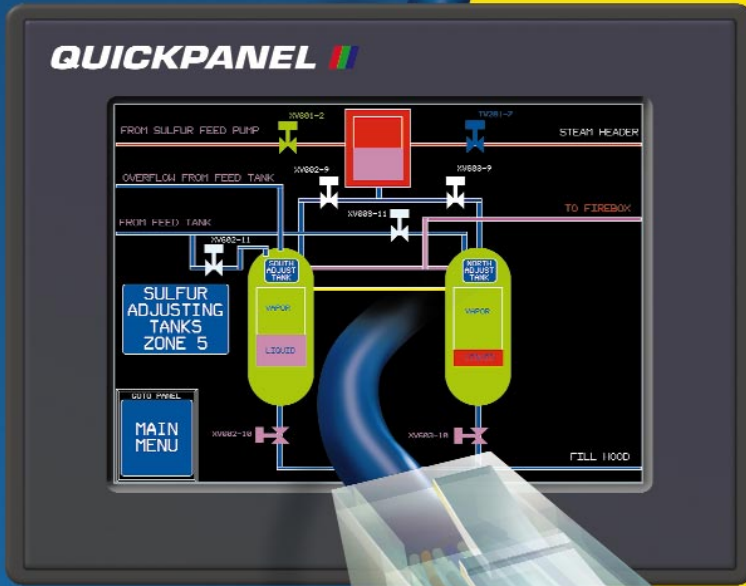
Plug In to Quicker...



QuickPanel 10.5" TFT Now with Ethernet

This full-size yet compact member of the QuickPanel family provides substantially more space for pushbuttons, pilot lights, and message displays. The bold, clear, 10.5" diagonal screen delivers 640 x 480 resolution and features TFT active technology for easy display viewing at any angle, and in various ambient lighting conditions. These QuickPanels are ideal for users who require higher visibility and resolution than that offered by smaller operator interfaces.

www.QuickPanel.info



- Commissioning
- Connections
- Machine Design
- Downloads & Upgrades
- Remote Monitoring
- Data Access
- Machine Maintenance

No matter what control solution you use, the new generation of QuickPanel will help make it faster and easier to design and use. This next-generation slim-profile touchscreen graphical operator interface has a built-in Ethernet port, allowing you to connect the QuickPanel to your in-machine or factory network.

QuickPanel Advantages:

- Faster application downloads
- Communicate via Ethernet to your Allen-Bradley and Modicon PLCs
- CompactFlash™ card facilitates easier application transfers and remote upgrades
- Supports up to 70 PLCs and PLC networks
- Integrates with CIMPLICITY™ Machine Edition as part of a complete control environment
- Industry-superior reliability—2-year warranty

TOTAL CONTROL
A Subsidiary of GE Fanuc



Slim-profile Touchscreen

Learn more at:
www.QuickPanel.info

© 2002 GE Fanuc Automation North America, Inc.



DataPanels

Datapanel text-based operator interface products are ideal for a wide range of industrial applications. They can boost the performance of existing systems while providing the power, responsiveness, and flexibility demanded of operator interfaces in advanced manufacturing and industrial systems. All products connect to new or existing control systems either through a parallel, hard-wired terminal block, or a serial interface, allowing the free mixing of different keypads, displays, and operator interfaces on the same communication network.

www.QuickPanel.info

QuickDesigner

Screen setup is easy with the QuickPanel family thanks to this user-friendly, Windows-based graphical editor.

QuickDesigner offers a comprehensive set of panel operators

including push-buttons, selector switches, pilot lights, text and numeric data displays, bar-graph displays, static and dynamic bit-mapped or object-oriented images, and more. Each of these functions as naturally as its discrete counterpart.

www.QuickPanel.info



CompactFlash™ Card

Now you can transfer your application to and from your QuickPanel quickly and easily with a CompactFlash card. Whether you want to send a new application to your customer, or perhaps just make a small change, you can simply plug a CompactFlash card into the back of your Quickpanel and get to work. A single card can be used to update multiple interfaces allowing for easier machine design and maintenance.

www.QuickPanel.info



Next Generation QuickPanel – Ethernet & CF Card

General Specifications

Description			
Style	12.1" TFT Color, 110VAC 10.4" TFT Color, 110VAC	12.1" TFT Color, 24VDC 10.4" TFT Color, 24 VDC	7.4" TFT Color, 24VDC
Catalog # (Model Number)	QPLCxAE0000 QPICxAE0000	QPLCxDE0000 (2880045-02) QPICxDE0000 (2880045-01)	QPGCxDE0000 (2880061)
Electrical			
Operating Voltage	110 VAC	24 VDC	
Power Consumption	50 VA or less	50W or less	20W or less
Allowable voltage drop	1 cycle or less	10 ms or less (Actual drop must be <1 second)	
Withstand Voltage	1500 VAC (20mA max 1Min.)	1000 VAC (20mA max 1Min.)	
Insulation	10M (at 500VDC)		
Noise Immunity	1000V(p-p) 1ms pulse		
Environmental			
Operating Temperature	0 to 50°C		
Storage Temperature	-20 to 60°C		
Operation Humidity	10% to 90% RH Non-Condensing		
Vibration	Compatible with IED61131-2 When vibration is NOT continuous: 10Hz to 57Hz 0.075mm, 57Hz to 150 Hz 9.8 m/s ² When Vibration is Continuous: 10 to 57 Hz 0.035mm, 57Hz to 150Hz 4.9m/s ² X, Y, Z direction for 10 times (80 min.)		
Noise Immunity	Noise Voltage: 1500Vp-P; Pulse duration: 1uSec; Arise Time: 1nSec.	Noise Voltage: 1000Vp-P; Pulse duration: 1uSec; Arise Time: 1nSec.	
Agency Approvals			
UL	No	Yes; Class I, Groups A,B,C, and D, Division 2 (file # E182139)	
CE Mark	No	Yes	
Mechanical			
Dimensions (W x H x D)	12.48" (317 mm) x 9.57" (243 mm) x 2.28" (58 mm)		8.46" (215 mm) x 6.69" (170mm) x 2.36" (60mm)
Cutout (W x H)	11.85" (301mm +/- 1 mm) x 8.96" (227.5mm +/- 1 mm)		8.05" (204.5mm +/- 1mm) x 6.28" (159.5mm +/- 1 mm)
Weight	7.7 lb.		5.5 lb.
Cooling	Natural Air Convection		
Installation	Front Mount		
Rating (front Panel)	IP65f, NEMA #250 TYPE 4X/12		

Functional Specifications

Catalog #	QPLCxAE0000 (N/A) QPLCxDE0000 (2880045-02)	QPICxAE0000 (N/A) QPICxDE0000 ((2880045-01)	QPGCxDE0000 (2880061)
Display			
Display Type	12.1"	10.4"	7.4"
Display Type	TFT Color LCD		
Pixel Resolution	800 x 600 pixel (W x H)	640 x 480 pixel (W x H)	
Colors	256 Colors		
Backlight	CFL (50,000h lifespan)		CFL (50,000h lifespan)
Viewing Area	12.1" diagonal, 9.68" (246.0 mm) x 7.26" (184.5 mm)	10.5" diagonal, 8.48" (211.2 mm) x 6.32" (158.4 mm)	7.4" diagonal, 5.89" (149.76 mm) x 4.42" (112.32 mm)
Brightness Control	4 levels via touch panels		
Resolution	40 W x 30H	32 W x 24H	
Memory			
Memory Size	4 MB Flash EPROM		

Data Backup	256KB – Lithium battery
External Interface	
Serial Port (SIO)	Yes
Expansion Serial Interface	Yes; Contact factory for available support
Network Interface	Ethernet (IEEE802.3, 10BASE-T)
Download Port	Yes
CF Card Interface	1 slot (Compact FLASH)
Printer Port	Compatible with NECPC-PR201/PL, EPSON ESC/P24-J84©, HP Laser Jet PCL 4 command printer ¹
AUX Input /Output (AUX + SND)	Yes; Contact Factory for available support

¹ Printers with only Windows drivers cannot be used. However, certain types of printers with both Windows and DOS drivers can be used. For details, contact your local distributor or factory.

Communication Modules

Optional Interfaces		
Network Type	12.1" or 10.4" Unit (<i>must use QPI-PSL-201 adapter</i> ²)	7.4" Unit (<i>must use QPJ-PSM-201 adapter module</i>)
A-B Remote I/O	QPI-ABR-201	QPJ-ABR-201
A-B DH Plus	QPI-ABD-201	QPJ-ABD-201
Modbus Plus	QPI-MBP-201	QPJ-MBP-201
Genius I/O	QPI-GEG-201	QPJ-GEG-201
Profibus DP Slave	QPI-PBS-201	QPJ-PBS-201
Profibus DP Slave	QPI-PBS-202; with memory retention (CE Approved)	N/A
DeviceNet	QPI-DVN-202	QPJ-DVN-202
Interbus-S	QPI-IBS-201	QPJ-IBS-201
CANOpen	QPI-COS-201	QPJ-COS-201

² Contact factory for availability

7.5" QuickPanel Data Sheet

The 7.5" TFT QuickPanel display is the newest member to the QuickPanel product family. It comes equipped with all the hardware features you need to provide a state-of-the-art operator solution. QuickPanel...The clear choice for any PLC!



- **New! Ethernet Port**

A 10Base-T ethernet port allows you to connect the QuickPanel to your network for communications to your PLC and for faster application downloads.

- **New! Compact Flash Card**

Need to send a new application to your customer, or maybe just have a small change to your application? The compact flash card allows you to transfer your application to and from your QuickPanel quickly and easily.

- **New! Twice The Memory**

The 7.5" unit comes standard with 4 Mbytes of flash EPROM, which makes it the perfect solution for any size application.

- **Backlight Burnout Detection**

If the QuickPanel's backlight ever burns out, it will be automatically detected. At that time the status LED will turn orange and the touch screen will be disabled. You can also configure the QuickPanel to set a bit in the PLC.

- **Low Power Consumption**

When it comes to power consumption, the 7.5" QuickPanel consumes a mere 28 watts of power. Coupled with its wide input voltage specification, this unit is ideal for applications powered by a battery.

- **Bright TFT Display Not STN**

This unit features a bright 64-color TFT display with a 640x480 pixel resolution. This combination provides the user a bright, sharp display of images over a wide viewing angle with no color shift.

- **Ratings and Approvals**

The industrially designed QuickPanel is rated for NEMA 4X/12. Agency approvals include Class 1 Division 2, UL, CUL, and CE to meet the demands of harsh industrial environments.

- **Compact Design**

The compact design of the 7.5" QuickPanel means it takes up less panel space. This design makes the QuickPanel the ideal choice for applications requiring a flat panel operator interface.

- **Ideal Panel Operator Replacer**

QuickPanel can replace various input/output devices such as push-buttons, pilot lights, ASCII display, alarming, and numeric entry and display. QuickPanel supports both static and dynamic bitmap graphics, which can enhance your application through information-rich pictures

- **Battery-Backed Real Time Clock**

The battery-backed real time clock is available for up-to-the-second time display as well as alarm stamping.

7.5" QuickPanel Price

Catalog Number	Description
QPGCTDE0000	7.5" TFT Color TCP QuickPanel with Ethernet, 24 VDC
HMI-KPN-401	Numeric and Function Keypad (for 7.5" Only)
HMI-CCT-402	Replacement Cold Cathode Backlight Tube for 7.5" QuickPanel

QuickDesigner Software

Catalog Number	Description
QDA-EDT-001	QuickDesigner Advanced Software
QDA-UPD-001	QuickDesigner Advanced Software Upgrade

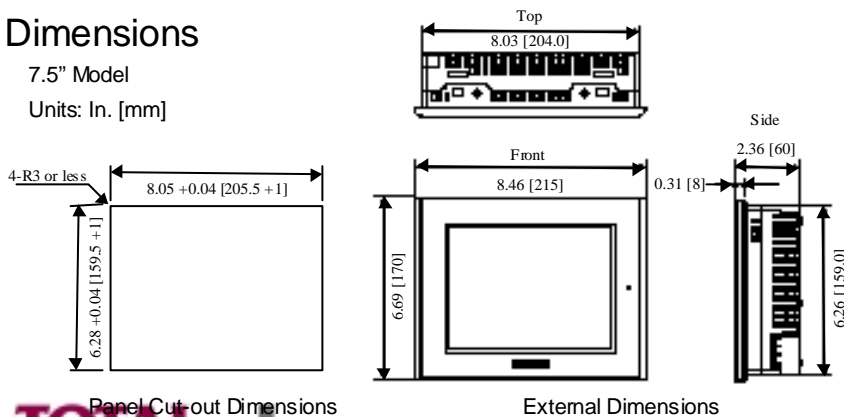
7.5" QuickPanel Specifications

Screen Type	7.5" diagonal TFT Color LCD
Pixel Resolution	640 W x 480 H
Display Area	5.9" (W) x 4.4"(H)
Touch Panel	Resistive Film (12 x 8 cells)
Colors	64 Colors (256 Colors in 1Q-2002)
Backlight	User Replaceable (Service life: 50,000 hrs @ 25° C and 24 hr. operation)
Memory	4 MB, Flash EPROM
Ratings	NEMA 4X/12
Approvals	CUL, CE, UL Class 1 Div 2
Operating Temp.	0°C to 50° C
Input Voltage	19.2 VDC to 28.8 VDC
Power Consumption	28 Watts or less
Weight	5.5 lbs.

Dimensions

7.5" Model

Units: In. [mm]



TOTAL CONTROL ■
A Subsidiary of GE Fanuc ■

Total Control Products, Inc

Automation Information Centers
 USA and Canada 1-800-648-2001
 Europe and Middle East (352) 727979-1
 Asia Pacific 65-566-4918
 Latin America (610) 437-7932
 Mexico 1-800-989-1244
www.total-control.com

Prices shown represent US dollars.

10.5" & 12.1" QuickPanel Data Sheet

The 10.5" and 12.1" TFT QuickPanel display are the newest members to the QuickPanel product family. They come equipped with all the hardware features you need to provide a state-of-the-art operator solution. QuickPanel...The clear choice for any PLC!



- **New! Ethernet Port**

A 10Base-T ethernet port allows you to connect the QuickPanel to your network for communications to your PLC and for faster application downloads.

- **New! Compact Flash Card**

Need to send a new application to your customer, or maybe just have a small change to your application? The compact flash card allows you to transfer your application to and from your QuickPanel quickly and easily.

- **New! Twice The Memory**

These units come standard with 4 Mbytes of flash EPROM, which makes it the perfect solution for any size application.

- **Backlight Burnout Detection**

If the QuickPanel's backlight ever burns out, it will be automatically detected. At that time the status LED will turn orange and the touch screen will be disabled. You can also configure the QuickPanel to set a bit in the PLC.

- **Low Power Consumption**

When it comes to power consumption, both QuickPanels consumes a mere 50 watts of power. Coupled with its wide input voltage specification, the DC powered units are ideal for applications powered by a battery.

- **Bright TFT Display Not STN**

These units feature a bright 64-color TFT display. This combination provides the user a bright, sharp display of images over a wide viewing angle with no color shift.

- **Ratings and Approvals**

The DC powered QuickPanels are rated for NEMA 4X/12. Agency approvals include Class 1 Division 2, UL, CUL, and CE to meet the demands of harsh industrial environments.

- **Compact Design**

The compact design of the QuickPanel means it takes up less panel space. This design makes the QuickPanel the ideal choice for applications requiring a flat panel operator interface.

- **Ideal Panel Operator Replacer**

QuickPanel can replace various input/output devices such as push-buttons, pilot lights, ASCII display, alarming, and numeric entry and display. QuickPanel supports both static and dynamic bitmap graphics, which can enhance your application through information-rich pictures

- **Battery-Backed Real Time Clock**

The battery-backed real time clock is available for up-to-the-second time display as well as alarm stamping.

QuickPanel Price

Catalog Number	Description
QPICTAE0000	10.5" TFT Color TCP QuickPanel with Ethernet, 120 VAC
QPICTDE0000	10.5" TFT Color TCP QuickPanel with Ethernet, 24 VDC
QPLCTAE0000	12.1" TFT Color TCP QuickPanel with Ethernet, 120 VAC
QPLCTDE0000	12.1" TFT Color TCP QuickPanel with Ethernet, 24 VDC
HMI-KPN-402	Numeric and Function Keypad (for 10.5 QPIC... Displays)
HMI-CCT-302	Replacement Cold Cathode Backlight Tube for QPI...C2P and QPIC...
HMI-CCT-405	Replacement Cold Cathode Backlight Tube for QPLC...

QuickDesigner Software

Catalog Number	Description
QDA-EDT-001	QuickDesigner Advanced Software (includes serial download cable)
QDA-UPD-001	QuickDesigner Advanced Software Upgrade

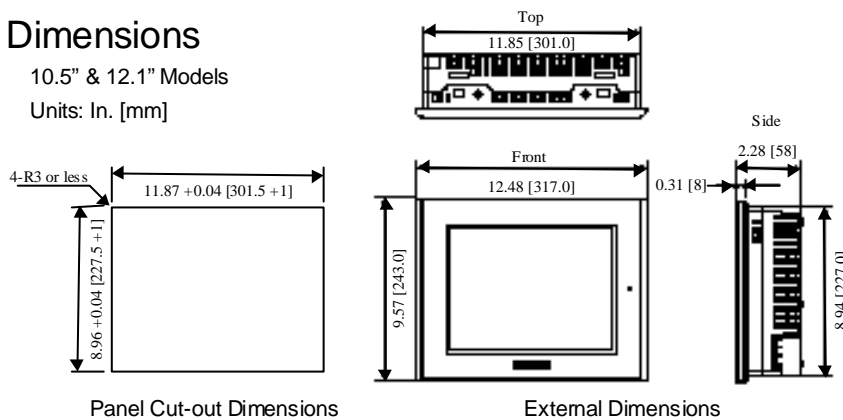
QuickPanel Specifications

Screen Type	12.1" diagonal TFT Color LCD	10.5" diagonal TFT Color LCD
Pixel Resolution	800 (W) x 600 (H)	640 (W) x 480 (H)
Display Area	9.69" (W) x 7.27" (H)	8.32" (W) x 6.24" (H)
Touch Panel	Resistive Film (15 x 10 cells)	Resistive Film (12 x 8 cells)
Colors	64 Colors (256 Colors in 1Q-2002)	
Backlight	User Replaceable (Service life: 50,000 hrs @ 25° C and 24 hr. operation)	
Memory	4 MB, Flash EPROM	
Ratings	NEMA 4X/12	
Approvals	CUL, CE, UL Class 1 Div 2 (Apply to DC powered models only.)	
Operating Temp.	0°C to 50° C	
Input Voltage	19.2 VDC to 28.8 VDC (DC powered models) 85 VAC to 132 VAC (AC powered models)	
Power Consumption	50 Watts or less (AC and DC models)	
Weight	7.7 lbs.	

Dimensions

10.5" & 12.1" Models

Units: In. [mm]



TOTAL CONTROL
A Subsidiary of GE Fanuc

Total Control Products, Inc

Automation Information Centers

USA and Canada 1-800-648-2001

Asia Pacific 65-566-4918

Latin America (610) 437-7932

Mexico 1-800-989-1244

www.total-control.com

Prices shown represent US dollars.

Accessories

Backlight Replacements	
HMI-CCT-202	Replacement Cold Cathode Backlight Tube for 5" Color or Mono (QPJ-2D10x-x2P)
HMI-CCT-203	Replacement Cold Cathode Backlight Tube for 6" Color or Mono (QPK-2D10x-x2P)
HMI-CCT-201	Replacement Cold Cathode Backlight Tube for 10.5" Color STN or Mono (QPI-2xxxx-x2P)
HMI-CCT-205	Replacement Cold Cathode Backlight Tube for 12.1" Color TFT unit (QPL-2xxxx-C2P)
HMI-CCT-301	Replacement Cold Cathode Backlight Tube for 10.5" Color TFT (QPI-3xxxx-Sxx)
HMI-CCT-302	Replacement Cold Cathode Backlight Tube for 10.5" Color TFT (QPI-3xxxx-Cxx or QPICxxx0000)
HMI-CCT-303	Replacement Cold Cathode Backlight Tube for 6" Color STN or Mono (QPK-3D200-x2P)
HMI-CCT-402	Replacement Cold Cathode Backlight Tube for 7.5" Color TFT (QPGCxxx0000)
HMI-CCT-405	Replacement Cold Cathode Backlight Tube for 12.1" Color TFT (QPLCxxx0000)
Anti-Glare Overlays	
HMI-AGO-203	Anti-glare overlay for 5" display - 5 pack (QPJ-2D10x-x2P)
HMI-AGO-204	Anti-glare overlay for 6" display - 5 pack (QPK-2D10x-x2P or QPK-3D200-x2P)
HMI-AGO-201	Anti-glare overlay for 9" display - 5 pack (QPI-xxxxx-E2P)
Keypads	
HMI-KPN-201	QuickPanel Keypad for 5" and 6" unit (QPJ-2D10x-x2P or QPK-2D10x-x2P or QPK-3D200-x2P)
HMI-KPN-301	QuickPanel Keypad for 9" unit (QPI-xxxxx-E2P)
HMI-KPN-302	QuickPanel Keypad for 10.5" unit (QPI-xxxxx-x2P)
HMI-KPN-401	QuickPanel Keypad for 7.4" unit (QPGCxxx0000)
HMI-KPN-402	QuickPanel Keypad for 10.5" (QPICxxx0000)
HMI-KPN-403	QuickPanel Keypad for 12.1" unit (QPLCxxx0000)
Stainless Steel Bezels	
HMI-BEZ-201	Stainless bezel for 5" Quickpanel (QPJ-2D10x-x2P)
HMI-BEZ-204	Stainless bezel for 6" Quickpanel (QPK-2D10x-x2P or QPK-3D200-x2P)
HMI-BEZ-202	Stainless bezel for 9" Quickpanel (QPI-xxxxx-E2P)
HMI-BEZ-203	Stainless bezel for 10.5" Quickpanel (QPI-xxxxx-x2P)
HMI-BEZ-205	Stainless bezel for 12.1" Quickpanel (QPL-2xxxx-C2P)
HMI-BEZ-403	Stainless bezel for 10.5" Quickpanel (QPICxxx0000)
HMI-BEZ-405	Stainless bezel for 12.1" Quickpanel (QPLCxxx0000)
HMI-BEZ-406	Stainless bezel for 7.4" Quickpanel (QPGCxxx0000)
Front Sheet Cover Sheet	
HMI-COV-203	Quickpanel Front Sheet Cover for 5" Color or Mono unit - 20 pack (QPJ-2D10x-x2P)
HMI-COV-204	Quickpanel Front Sheet Cover for 6" Color or Mono unit - 20 pack (QPK-2D10x-x2P or QPK-3D200-x2P)
HMI-COV-201	Quickpanel Front Sheet Cover for 9" EL unit - 10 pack (QPI-xxxxx-E2P)
HMI-COV-202	Quickpanel Front Sheet Cover for 10.5" Color unit - 10 pack (QPI-xxxxx-x2P)
HMI-COV-405¹	Quickpanel Front Sheet Cover for 12.1" & 10.4" Color unit - 5 pack (QPL-2xxxx-C2P & QPICxxx0000)
HMI-COV-406¹	Quickpanel Front Sheet Cover for 7.4" display - 5 pack (QPGCxxx0000)
Printer Cable	
HMI-CAB-C99	Printer Cable for Quickpanel (QPx2xx00-x2P Series)
PSM-PRCB00¹	Printer Cable for QPGCxxx0000 / QPL-2xxxx-C2P / QPICxxx0000 Quickpanels
Misc. Accessories	
HMI-CLP-200	1-set of Mounting Clamps for QuickPanel (QPJ-2D10x-x2P, QPK-2/3Dx0x-x2P, QPI-2/3xxxx-x2P, QPxxxxx0000)
HMI-JBX-201	Junction Box for Hand Held QuickPanel
HMI-CAB-A02	12" Cable Adapter for Hand Held QuickPanel
HMI-CAB-A02-25x	25" Cable Adapter for Hand Held QuickPanel
HMI-CAB-A02-50x	50" Cable Adapter for Hand Held QuickPanel
HMI-SCR-100	Bag of Jack Screws (utilize when making a PLC communication cable)
510-1000-004	Power Supply, 24 VDC, 1.3 Amp (for 5" and 6" Units)
510-1000-041	Power Supply, 24 VDC, 2 Amp (7.4", 9", 10.5" and 12.1" Units)

¹ Contact factory for availability

QuickPanel to PLC Communication Cable

The following list summarizes often used cables to connect Quickpanel to a PLC. Please refer to the QuickPanel Hardware Reference Guide for a complete overview and wiring diagram.

PLC Communication Cables for GE Fanuc Series 90 PLC	
HMI-CAB-C82	Quickpanel to PLC Communication Cable, 15 pin RS-422 Note: Connects Quickpanel to Series 90 PLC SNP programming port.
HMI-CAB-C53	Quickpanel to PLC Communication Cable, 25 pin RS-232 Note: Connects Quickpanel to Series 90 PLC CMM module (SNP, SNPX) Series 90-30: Port 1 - RS232 Series 90-70: Port 1 or 2 - RS-232
HMI-CAB-C93	Quickpanel to PLC Communication Cable, 25 pin RS-422 Note: Connects Quickpanel to Series 90 PLC CMM module (SNP, SNPX) Series 90-30: Port 2 - RS422 Series 90-70: Port 1 or 2 - RS-422
HMI-CAB-C111	Quickpanel to VersaMax CPU 001/002/005, 9-pin Serial Port
HMI-CAB-C118	Quickpanel to Series 6 CCM
HMI-CAB-C119	Quickpanel to VersaMax Mico/Nano, RJ-45 Serial Port
HMI-CAB-C120	Quickpanel to 90/30 CPU 351/352/362, RJ11 Serial Port
PLC Communication Cables for Allen-Bradley PLC	
HMI-CAB-C51	Quickpanel to PLC-5 KF2
HMI-CAB-C52	Quickpanel to PLC Communication Cable, 9 pin RS-232 Note: Connects Quickpanel to SLC 5/03, SLC 5/04 channel 0 HMI-CAB-C53 Quickpanel to PLC Communication Cable, 25 pin RS-232 Note: Connects Quickpanel to PLC-5 channel 0
HMI-CAB-C52	Quickpanel to Communication Cable, ControlLogix, 9-pin RS-232
HMI-CAB-C83	Quickpanel to PLC Communication Cable, SLC500, DH-485 Note: Connects Quickpanel to SLC500, SLC5/01, SLC5/02, SLC 5/03: DH-485 program port, one SLC to one QUICKPANEL, no simultaneous program port, 1.8 meter max.
HMI-CAB-C84	Quickpanel to PLC Communication Cable, SLC500, DH-486 multiport Note: Connects Quickpanel to SLC500, SLC5/01, SLC5/02, SLC 5/03: DH-485 program port, one SLC to one QUICKPANEL, with simultaneous program port, or DH-485 link via 1747-AIC module, multiple QUICKPANELS to multiple SLC's, 1.8 meter max.
HMI-CAB-C106	Quickpanel to PLC Communication Cable, MicroLogix, Programming Port, 8 pin circular DIN RS-232 Note: Connects Quickpanel to MicroLogix Program Port, 15 pin circular DIN RS-232
HMI-CAB-C90	Quickpanel to PLC Communication Cable, PLC-2, program port, 15 pin RS-422 Note: Connects Quickpanel to PLC-2 Program Port, 15-pin RS-422
HMI-CAB-C107	Quickpanel to PLC Communication Cable, PLC-5, Channel 0, 25 pin RS-422 Note: Connects Quickpanel to PLC-5 channel 0
PLC Communication Cables for Mitsubishi	
HMI-CAB-C53	Quickpanel to PLC Communication Cable, 25 pin RS-232
HMI-CAB-C88	Quickpanel to PLC Communication Cable, MITSUBISHI A1S COMP LINK MOD. 9 pin RS-232
HMI-CAB-C91	Quickpanel to PLC Communication Cable, MITSUBISHI FX PROGRAM PORT or FX0 via adapter
PLC Communication Cables for Modicon PLC	
HMI-CAB-C102	Quickpanel to PLC Communication Cable, MODICON 984 MICRO, RJ45 headset connector RS232
HMI-CAB-C53	Quickpanel to PLC Communication Cable, 25 pin RS-232
HMI-CAB-C58	Quickpanel to PLC Communication Cable, AEG Modicon Slot Processor
PLC Communication Cables for Siemens PLC	
HMI-CAB-C104	Quickpanel to PLC Communication Cable, 25 pin, male, current loop Note: Connects Quickpanel to a 3964R 928B TTY Sub module, 25 pin male, current loop
HMI-CAB-C52	Quickpanel to PLC Communication Cable, 9 pin RS-232 Note: Connects Quickpanel to S7-300 MPI
HMI-CAB-C53	Quickpanel to PLC Communication Cable, 25 pin RS-232 Note: Connects Quickpanel to a 3964R 928B RS232 Sub module

HMI-CAB-C76	Quickpanel to PLC Communication Cable, SIEMENS S5 program port 15 pin Note: Connects Quickpanel to S5 family programming port (15 pin current loop)
HMI-CAB-C92	Quickpanel to SIMATIC TI 500 Series 9-pin Male RS-422
HMI-CAB-C110	Quickpanel to PLC Communication Cable, Siemens, S7-200 PPI, 9 pin RS-422 Note: Connects Quickpanel to S7-200 PPI
HMI-CAB-C100	Quickpanel to SIMATIC TI545-1102
HMI-CAB-C101	Quickpanel to SIMATIC TI 500 Series, 9-pin Programming port
PLC Communication Cables for Aromat PLC	
HMI-CAB-C111	Quickpanel to PLC Communication Cable, Aromat FP1, 9 pin RS-232
PLC Communication Cables for B&R PLC	
HMI-CAB-C98	Quickpanel to PLC Communication Cable, B&R, Mininet, 2-plated wires, RS-422
PLC Communication Cables for Hitachi PLC	
HMI-CAB-C115	Quickpanel to PLC Communication Cable, Hitachi S Series, 4 plated wires, RS-422
PLC Communication Cables for IDEC PLC	
HMI-CAB-C53	Quickpanel to PLC Communication Cable, Micor-1, FA via link adapter, 25-pin, RS-232
HMI-CAB-C109	Quickpanel to PLC Communication Cable, Micro-3, 8-pin circular Mini Din
PLC Communication Cables for Keyence PLC	
HMI-CAB-C53	Quickpanel to PLC Communication Cable, KV-L2, 25-pin, RS-232, Port 1
HMI-CAB-C111	Quickpanel to PLC Communication Cable, KV-L2, KV-10R, RJ-11, RS-232 Programming port
PLC Communication Cables for Koyo / PLC Direct PLC	
HMI-CAB-C53	Quickpanel to PLC Communication Cable, DL430, 440 Port 2, D4-DCM, 25-pin RS-232
HMI-CAB-C53	Quickpanel to PLC Communication Cable, DL-330, 330P with use of D3-232-DCU, DL350 Port 2, DL450 Port A, 25-pin , RS-232
HMI-CAB-C103	Quickpanel to PLC Communication Cable, DL340, 4-pin Modular Phone RS-232
HMI-CAB-C86	Quickpanel to PLC Communication Cable, BDI250 Port 1, 6-pin Modular Phone, RS-232
HMI-CAB-C86	Quickpanel to PLC Communication Cable, DL350 Port 1, DL240 Port 2, 6-pin Modular Phone, RS-232
PLC Communication Cables for OMRON PLC	
HMI-CAB-C53	Quickpanel to PLC Communication Cable C200H, 25-pin RS-232
HMI-CAB-C108	Quickpanel to PLC Communication Cable, C200H, 25-pin RS-422
HMI-CAB-C67	Quickpanel to PLC Communication Cable, C20H, CQM1, 9-pin RS-232
PLC Communication Cables for Reliance PLC	
HMI-CAB-C53	Quickpanel to PLC Communication , Automate program port, R-net gateway, 25-pin RS-232
PLC Communication Cables for Simatic TI PLC	
HMI-CAB-C53	Quickpanel to PLC Communication Cable, 3055 with use a RS-232 DCU
HMI-CAB-C53	Quickpanel to PLC Communication Cable, 405, 25-pin RS-232
HMI-CAB-C101	Quickpanel to PLC Communication Cable, 500 series, 9-pin programming port, 9-pin female RS-232
HMI-CAB-C76	Quickpanel to PLC Communication Cable, SIEMENS S5 program port 15 pin Note: Connects Quickpanel to S5 family programming port (15 pin current loop)
HMI-CAB-C92	Quickpanel to PLC Communication Cable, SIMATIC TI 500 Series 9-pin Male RS-422
HMI-CAB-C100	Quickpanel to PLC Communication Cable, SIMATIC TI545-1102 Programming port, 9-pin female RS-422
PLC Communication Cables for Square D PLC	
HMI-CAB-C94	Quickpanel to PLC Communication , Symax Model 100 and greater, 9-pin male RS-422
HMI-CAB-C53	Quickpanel to PLC Communication , Symax Model 50 via link adapter, 25-pin RS-232
PLC Communication Cables for Toshiba PLC	
HMI-CAB-C97	Quickpanel to PLC Communication , T2, 15-pin male RS-422
HMI-CAB-C96	Quickpanel to PLC Communication , MX, EX, 4 plated wires RS-422
PLC Communication Cables for Toyopuc D PLC	
HMI-CAB-C113	Quickpanel to PLC Communication , Toyopuc PC1, 3 plated wires RS-422 Half Duplex
HMI-CAB-C114	Quickpanel to PLC Communication , Toyopuc PC2F, 4 spade lug RS-422 Half Duplex
PLC Communication Cables for Uni-Telway D PLC	
HMI-CAB-C116	Quickpanel to PLC Communication , TSX37 Series, 8-pin Male, Mini-Din



Operator Interface Update

New 6" LCD & STN QuickPanel Bundled Solutions

Part Number	Description	Contents	List (\$ US)	List (\$ CAN)	Discount Symbol
MPK-2D100-L2P	6" LCD QuickPanel bundled with 2 serial cables	QPK-2D100-L2P HMI-CAB-C53 HMI-CAB-C82			
MPK-2D100-S2P	6" STN QuickPanel bundled with 2 serial cables	QPK-2D100-S2P HMI-CAB-C53 HMI-CAB-C82			

*Specifically designed, packaged, and **priced** to compete against the low cost players in the OI market, such as Maple Systems, Automation Direct, Omron, Mitsubishi, and KEP*

*For a limited time, we are offering to all new QuickPanel customers QuickDesigner Software and download cable (P/N QDA-EDT-001) at **no charge***

Announcement will be made in the next AEB E-Brief, and as a New Product Bulletin

You Asked... We've Delivered!



Operator Interface Update

✓ *Aggressive advertisement campaign launched*

- *Ads in four magazines every month in 2001*
- *Included in card decks sent to magazine subscribers*



✓ *Literature is now available*

Description	US Version		International Version	
	GE Fanuc Logo	TCP Logo	GE Fanuc Logo	TCP Logo
QuickPanel Cut Sheet	GFA-278	GFA-278-TCP		
QuickPanel Order Guide	GFA-282	GFA-282-TCP	GFA-282-INT	GFA-282-TCP-INT
DataPanel Cut Sheet	GFA-279	GFA-279-TCP		
DataPanel Order Guide	GFA-283	GFA-283-TCP	GFA-283-INT	GFA-283-TCP-INT

You Asked... We've Delivered!

GE Fanuc Automation

QuickPanel™ Ordering Guide

- Displays 1
- Communications 4
- Software 5
- Accessories 6



DISPLAYS

NEW QuickPanel with Ethernet and CompactFlash™ Card Interface

Equipped with a 10 base-T Ethernet port, these next-generation QuickPanels let you connect to your network for quick and easy communication to your PLC and faster application downloads. In addition, you can transfer applications to and from the unit using the on-board CompactFlash interface, making upgrades easier. And with 4 Mbytes of flash memory, these QuickPanels are a great solution for any size application. Each unit is available in a range of display sizes and communicates with all major PLCs and PLC networks*, including Allen-Bradley Ethernet IP, GE Fanuc SRTP and EGD, and Modicon Modbus TCP/IP. And with its NEMA 4X/12 rating as well as UL (Class 1, Div. 2), c-UL and CE approvals, the QuickPanel is built to meet the demand of hard industrial environments.

Description	Catalog Number	
QuickPanel with Ethernet Unit Pricing	OPGCGDE0000	7.4" TFT Color LCD for standard serial and Ethernet PLC drivers, 24 VDC, UL/c-UL, CE
	OPICGAE0000	10.5" TFT Color LCD for standard serial and Ethernet PLC drivers, 110 VAC
	OPICGDE0000	10.5" TFT Color LCD for standard serial and Ethernet PLC drivers, 24 VDC, UL/c-UL, CE
	OPLCGAE0000	12.1" TFT Color LCD for standard serial and Ethernet PLC drivers, 110 VAC
	OPLCGDE0000	12.1" TFT Color LCD for standard serial and Ethernet PLC drivers, 24 VDC, UL/c-UL, CE

*Contact factory for complete list of supported PLC networks.

QuickPanel

9" Monochrome EL, 10.5" Color STN, TFT or Monochrome LCD, 12.1" Color TFT

The larger members of the QuickPanel family are identical to the QuickPanel, jr. in every respect except for having about four times as much viewing area. The 12.1" diagonal display has 800 W x 600 H pixels, the 10.5" diagonal display has 640 W x 480 H pixels and the EL has a 9" diagonal screen with a 640 W x 400 H pixel format. Each provides a bold, clear display. Like their smaller counterparts, these are practical and cost-effective replacements for a variety of discrete devices, from push buttons and pilot lights to message centers. Dynamic graphics can be added to present information-rich pictures to the operator in a single glance. Each unit communicates with all major PLCs and PLC networks including A-B Remote I/O, Data Highway Plus, Modbus Plus and GE Fanuc Genius (some require an optional, field-installed module). All this comes in a slim-line, compact package.



The bold, clear display of the 10.5" Color TFT.

Description	Catalog Number	
QuickPanel Unit Pricing	GOP131200E2P	9" Monochrome EL for standard serial PLC drivers, 120 VAC
	GOP131200S2P	10.5" STN Color LCD for standard serial PLC drivers, 120 VAC
	GOP131200C2P	10.5" TFT Color for standard serial PLC drivers, 120 VAC
	GQPL21100C2P	12.1" TFT Color for standard serial PLC drivers, 120 VAC
	GQPL2D200C2P	12.1" TFT Color for standard serial PLC drivers, 24 VDC, UL CE
	GQPI2D100L2P	10.5" Monochrome LCD for standard serial PLC drivers, 24 VDC, UL CE
	GQPI3D200E2P	9" Monochrome EL for standard serial PLC drivers, 24 VDC, UL CE
	GQPI3D200S2P	10.5" STN Color LCD for standard serial PLC drivers, 24 VDC, UL CE
	GQPI3D200C2P	10.5" TFT Color for standard serial PLC drivers, 24 VDC, UL CE

QuickStart Kits—*Everything you need for your first project!*

9", 10.5" or 12.1" QuickPanel

- QuickDesigner for Windows® off-line editor*
- Download Cable
- 120 VAC Line Cord (for AC units) *or* 24 VDC, Power Supply (for DC units)

PLC cables included:

- HMI-CAB-C53
- HMI-CAB-C82
- HMI-CAB-C83

Description	Catalog Number	
QuickStart Kits	GOSI2D100L2P	10.5" Monochrome LCD for standard serial PLC drivers, 24 VDC UL CE
	GOSI31200E2P	9" Monochrome EL for standard serial PLC drivers, 120 VAC
	GOSI31200S2P	10.5" STN Color LCD for standard serial PLC drivers, 120 VAC
	GOSI31200C2P	10.5" TFT Color LCD for standard serial PLC drivers, 120 VAC
	GOSL21100C2P	12.1" TFT Color for standard serial PLC drivers, 120 VAC

*For PLC driver availability, refer to the QuickDesigner Software section.
UL Listed to U.S. and Canadian Safety Standards: for use in Class 1, Group A,B,C,D,Div 2 (UL1604)

Video QuickPanel

GE Fanuc now offers another technical innovation in industrial process control... the Video QuickPanel. This member of the QuickPanel family provides three channels of video input. Up to four video display objects can appear on a panel. With this dynamic enhancement, your machine process can now be monitored and controlled directly by the machine operator. The QuickPanel Video combines a 10.5", 640 W x 480 H color TFT flat panel display with a resistive touch panel into a compact package. The unit is compatible with QuickDesigner software. All inputs are software selectable and programmed just like any other QuickPanel operator.



Description	Catalog Number	
QuickPanel Video Unit Pricing	GQPI211V0C2P	10.5" TFT Color for standard serial PLC drivers, 120 VAC with 3 NTSC video inputs
	GOSI211V0C2P	Quick Start Kit. OPI-211V0-C2P, Quick Designer for Windows® off-line editor, user manual, download cable, HMI-CAB-C53, HMI-CAB-C82, HMI-CAB-C83

QuickPanel, jr.

The QuickPanel, jr. is a practical and cost-effective replacement for a variety of discrete devices, from push buttons and pilot lights to message centers. Despite its small size, the QuickPanel, jr.'s 5" or 6" diagonal screen with 320 W x 240 H pixel format provides a sharp display in color or monochrome. Each unit communicates with all major PLCs and PLC networks including A-B Remote I/O, Data Highway Plus, Modicon Modbus Plus and GE Fanuc Genius® (some require an optional, field-installed module). The industrially designed QuickPanel, jr. is rated NEMA 4X/12. Best of all, its simple yet versatile design will increase your productivity at a lower installed cost.



The amazingly versatile and compact QuickPanel, jr.

Description	Catalog Number	
QuickPanel, jr. Unit Pricing*	GQPJ2D100L2P	5" Monochrome LCD for standard serial PLC drivers, 24 VDC, UL
	GQPJ2D101L2P	5" Monochrome LCD for standard serial PLC drivers, 24 VDC, CE
	GQPJ2D100S2P	5" STN Color LCD for standard serial PLC drivers, 24 VDC, UL
	GQPJ2D101S2P	5" STN Color LCD for standard serial PLC drivers, 24 VDC, CE
	GQPK2D100L2P	6" Monochrome LCD for standard serial PLC drivers, 24 VDC, UL CE
	GQPK2D100S2P	6" STN Color LCD for standard serial PLC drivers, 24 VDC, UL CE
	GQPK3D200C2P	6" TFT Color LCD for standard serial PLC drivers, 24 VDC, UL CE

QuickStart, jr. Kits—*Everything you need for your first project!*

- A color or monochrome 5" or 6" QuickPanel, jr.
- QuickDesigner for Windows® off-line editor
- Download Cable
- 24 VDC Power Supply
- HMI-CAB-C53 Cable
- HMI-CAB-C82 Cable
- HMI-CAB-C83 Cable

Description	Catalog Number	
QuickStart, jr.	GQSJ2D100L2P	5" Monochrome LCD for standard serial PLC drivers, 24 VDC, UL
	GQSJ2D100S2P	5" STN Color LCD for standard serial PLC drivers, 24 VDC, UL
	GQSK2D100L2P	6" Monochrome LCD for standard serial PLC drivers, 24 VDC, UL CE
	GQSK2D100S2P	6" STN Color LCD for standard serial PLC drivers, 24 VDC, UL CE
	GQSK3D200C2P	6" TFT Color LCD for standard serial PLC drivers, 24 VDC, UL CE

QuickPanel Mini

The QuickPanel Mini is our low-end member of the QuickPanel family. Its limited functionality provides the best solution for those simple control applications. The QuickPanel Mini bridges the gap between the traditional character-based message displays and the traditional graphic operator interface. The QuickPanel Mini gives you low-end graphics interface capabilities within a message display price range.



Description	Catalog Number	
QuickPanel Mini Unit Pricing	GOPM2D100L2P	6" Monochrome LCD w/touchscreen, 24 VDC, CE and UL listed
	GOSM2D100L2P	Quick Start Kit. 6" Monochrome LCD w/touchscreen, Quick Designer for Windows™ off-line editor, user manual, download cable, 24 VDC Power Supply, HMI-CAB-C53, HMI-CAB-C82, HMI-CAB-C83

Handy QuickPanel

The Handy QuickPanel is a light weight, hand-held, portable operator interface which supports all standard serial PLC drivers. It does not support any QPJ or QPI communication modules. In addition to touchscreen functionality, there are 11 function keys, a hard-wired push button with external contacts, an external buzzer output, and an operator switch with an additional keypad. Panel development is done with QuickDesigner software.



Description	Catalog Number	
Handy QuickPanel Unit Pricing	GOPH2D100L2P	6" Monochrome LCD w/touchscreen, Function keys, E-stop For standard serial PLC drivers, no comm modules, 24 VDC UL CE
	GOPH2D100S2P	6" Color STN LCD w/touchscreen, Function keys, E-Stop For Standard serial PLC drivers, no comm modules, 24 VDC UL CE
	HMICAB-A02	Cable, 12'. (24 VDC, RS232C and RS422, E-stop, buzzer)
	HMI-CAB-A02-25X	Cable, 25'. (24 VDC, RS232C and RSS422, E-stop, buzzer)
	HMI-CAB-A02-50X	Cable, 50'. (24 VDC, RS232C and RS422, E-stop, buzzer)
	HMI-JBX201	Junction box. Power, PLC & signal connections
	GQBH2D100L2P	Quick Bundle. Includes 6" Monochrome LCD, 12' A02 cable, power supply, junction box. UL CE
	GQBH2D100S2P	Quick Bundle. Includes 6" Color STN LCD, 12' A02 cable, power supply, junction box. UL CE

PLC Communication Cables

PLC Manufacturer	PLC Type	Catalog Number	Description
Allen-Bradley	SLC 500, SLC 5/01, SLC 5/02, SLC 5/03	HMI-CAB-C83	DH-485 program port, one SLC to one QUICKPANEL, no simultaneous program port
		HMI-CAB-C84	DH-485 program port, one SLC to one QUICKPANEL, with simultaneous program port, 6' max.
	SLC 5/03, SLC 5/04	HMI-CAB-C84	DH-485 link via 1747-AIC module, multiple QUICKPANELS to multiple SLC's, 6' max.
		HMI-CAB-C52	Channel 0, 9 pin RS-232
	PLC-5	HMI-CAB-C53	Channel 0, 25 pin RS-232
		HMI-CAB-C107	Channel 0, 25 pin RS-422
		HMI-CAB-C51	KF2 module, 25 pin RS-232
		HMI-CAB-C90	Program Port, 15 pin RS-422
	MicroLogix	HMI-CAB-C106	Program Port, 8 pin circular DIN RS-232
	Remote I/O		Use QPJ- or QPI-ABR-201 Module
Data Highway Plus		Use QPJ- or QPI- ABD-201 Module	
Aromat	FPI (MEWNET)	HMI-CAB-C111	25 pin to 9 pin RS-232
ASCII Single Drop	Customer micro controller or computer		Requires custom cable. Some applications can use C52 or C53
B&R	Mininet	HMI-CAB-C98	2-plated wires RS-422
CANopen	CANopen		Use QPJ- or QPI-COS-201 Module
DeviceNet	DeviceNet		Use QPJ- or QPI-DVN-202 Module
Flex	Customer micro controller, computer, motion controller, scale, etc.		Requires custom cable. Some applications can use C52 or C53
GE Fanuc	SNP 90/30, 90/70	HMI-CAB-C82	Program Port, 15 Pin RS-422
	CMM Module SNP	HMI-CAB-C53	25 pin RS-232
		HMI-CAB-C93	25 pin RS-422
	GE GENIUS 90/30, 90/70, SERIES 6, SERIES 5		Use QPJ- or QPI-GEG-201 Module
	GE Series 6 CCM	HMI-CAB-118	
	VersaMax CPU 001/002/005	HMI-CAB-C111	9 pin RS-232
	VersaMax Micro/Nano	HMI-CAB-C119	RJ45 RS-232
90/30 CPU 351/352/363	HMI-CAB-C120	RJ11 RS-232	
Hitachi	H Series	HMI-CAB-115	15 pin male
	S10	HMI-CAB-C53	4 wire RS-422
IDEC	Micro-1, FA via link adapter	HMI-CAB-C109	25 pin RS-232
	Micro 3		8 pin circular DIN RS-232
Interbus-S	Interbus-S	HMI-CAB-C53	Use QPJ- or QPI-IBS 201 Module
Keyence	KV-L2 Port 1	HMI-CAB-C112	25 pin RS-232
	KV-L2, KV-10R Program Port	NA	RJ11 Handset Connector RS232
Koyo	NA	HMI-CAB-C88	see PLC Direct
Mitsubishi	Series A1S	HMI-CAB-C53	9 pin RS-232, for A1SJ71C24-R2
	Series A Computer Interface	HMI-CAB-C91	25 pin RS-232
	Series A Program Port	HMI-CAB-C91	25 pin RS-422
	FX	HMI-CAB-C91	25 pin RS-422
Modicon	FX0	HMI-CAB-C91	25 pin RS-422 via an adapter
	984 A,B,X	HMI-CAB-C53	25 pin RS-232
	984 Slot and compact	HMI-CAB-C58	9 pin RS-232
	984 micro	HMI-CAB-C102	RJ45 headset connector RS-232
	MODBUS Plus		Use QPJ- or QPI-MBP-201 Module
MODBUS Slave	HMI-CAB-C53	Requires custom cable. Some applications can use C52 or C53	
Omron	C200H	HMI-CAB-C108	25 pin RS-232
	C20H, COM1	HMI-CAB-C67	9 pin RS-422
		HMI-CAB-C53	9pin RS-232
PLC Direct	DL430, 440 P2, D4-DCM		25 pin RS-232
	DL330, 330P with use of D3-232-DCU, DL350 P2, DL450 PA	HMI-CAB-C53	25 pin RS-232
	DL340	HMI-CAB-C103	4-pin Modular Phone RS-232
	DL240 P2, 250 P1, 350 P1	HMI-CAB-C86	6-pin Modular Phone RS-232
Profibus	Profibus		Use QPJ- or QPI-PBS-201 Module
Reliance	Automate program port, R-net gateway	HMI-CAB-C53	25 pin RS-232
SATTCON	05-35	HMI-CAB-C89	25 pin RS-232
Siemens	S5 family program port	HMI-CAB-C76	15 pin current loop
	3964R 928B, TTY Sub Module	HMI-CAB-C104	25 pin Male Current Loop
	3964R 928B RS232 Sub Module	HMI-CAB-C53	25 pin RS-232
	S7-200 PPI	HMI-CAB-C110	9 pin RS-422
	S7-300 MPI	HMI-CAB-C52	9 pin to PC adapter
Simatic TI	305 with use a RS-232 DCU	HMI-CAB-C53	25 pin RS-232
	405	HMI-CAB-C53	25 pin RS-232
	500 series, 25 pin program port	HMI-CAB-C53	25 pin RS-232
	500 series 9 pin program port	HMI-CAB-C101	9 pin RS-232
	500 series 9 pin male RS-422	HMI-CAB-C92	9 pin RS-422
	TI545-T102, 9 pin female RS-422	HMI-CAB-C100	9 pin RS-422
Square D	Symax model 100 and greater	HMI-CAB-C94	9 pin RS-422
	Symax model 50 via link adapter	HMI-CAB-C53	25 pin RS-232
Toshiba	MX, EX	HMI-CAB-C96	4 plated wires RS-422
	T2	HMI-CAB-C97	15 pin RS-422
Toyopuc	PC1	HMI-CAB-C113	3 plated wires RS-422
	PC2F	HMI-CAB-C114	4 spade lugs RS-422
Uni-Telway	Uni-Telway Network	HMI-CAB-116	25 pin to 8 pin male Mini-DIN

Communication Modules

Description	Catalog Number	
QuickPanel, jr. Communication Modules (for all OPJ and QPK units)	QPJ-ABD-201	A-B Data Highway Plus interface module UL CE6* Color STN LCD w/touchscreen, Function keys, E-Stop For Standard serial PLC drivers, no comm modules, 24 VDC, UL CE
	QPJ-ABR-201	A-B 1771 Remote I/O interface module, UL CE
	QPJ-GEG-201	General Electric Genius I/O interface module, UL
	QPJ-MBP-201	Modicon Modbus Plus interface module, UL
	QPJ-PBS-201	Profibus interface module
	QPJ-IBS-201	Interbus-S interface module
	QPJ-COS-201	CANopen interface module
	QPJ-DVN-202	DeviceNet interface module
	QuickPanel Communication Modules (for all QPI & QPL units)	QPI-ABD-201
QPI-ABR-201		A-B 1771 Remote I/O interface module, UL CE
QPI-GEG-201		General Electric Genius I/O interface module, UL
QPI-MBP-201		Modicon Modbus Plus interface module, UL
QPI-PBS-201		Profibus interface module
QPI-PBS-202		Profibus interface module (with Memory Retention) CE Mark
QPI-IBS-201		Interbus-S interface module
QPI-COS-201		CANopen interface module
QPI-DVN-202		DeviceNet interface module

SOFTWARE

QuickDesigner Software

QuickDesigner is a user-friendly Windows®-based graphic editor that is common to all QuickPanel models. QuickDesigner offers a comprehensive set of panel operators including push buttons, selector switches, pilot lights, text and numeric data displays, bar-graph displays, static and dynamic bit-mapped or object oriented images and more. Each of these functions act naturally as its discrete counter-part—push buttons toggle on and off at a touch, pilot lights glow to indicate active status, and so forth. Despite its impressive array of features, QuickDesigner is easy to use.

Description	Catalog Number	
QuickDesigner Software	QDA-EDT-001	QuickDesigner Advanced software has everything for development and downloading of applications including a download cable. QuickDesigner Lite (Advanced software for development and downloading applications) QuickDesigner Lite (5 Pack License) QuickDesigner software provides protocol support for the following PLCs: <ul style="list-style-type: none"> • Allen Bradley <ul style="list-style-type: none"> SLC-500 singlepoint, network, Channel 0, and DF1 PLC-5 channel 0 DF1 serial PLC-2 program port Remote I/O Data Highway Plus for PLC-5 and SLC 5/04 • Aromat (MEWNET) • ASCII Slave for computer communications • B&R Mininet • CANopen • DeviceNet • Flex (ASCII) • GE Fanuc series 90 SNP program port and CMM module Genius I/O, SNPX, Series 6 CCM • GE Fanuc TCP/IP (SRTP&EGD)* • Hitachi H Series, Hitachi S10 • Idec Micro 1, Micro 3, FA2J, and FA3S • Interbus-S • Keyence KV-L2 Port 1, KV-L2 & KV-10R Program Port • Koyo DL405, DL305, DL205 • Mitsubishi <ul style="list-style-type: none"> A series computer interface A series program port FX series program port • Modicon <ul style="list-style-type: none"> Modbus TCP/IP* Modbus Master, Modbus Plus, Modbus Slave • Omron "C" series host link • PLC Direct • Profibus-DP • Reliance • Siemens S5 family program port, S7-200 PPI, S7-300/400 MPI 3964R Communication Link • Simatic T1405/305 CCM2, TI500 series program port • Square D Symax program port or NIM • Toshiba T1, T2, MX, and EX • Toyopuc PC1 and PC2 • Unitelway
	QDA-EDT-001/L QDA-EDT-05P	

*Call factory for availability.

Keypads

The keypad option adds external keypads that surround the touch screen. The keypads are used in place of, or along with, the touch screen. For example, instead of touching the QuickPanel screen to activate a push button, you can press an external keypad. You can also assign an external keypad to simulate a push button, selector switch, goto panel button, numeric data entry, print screen button or word button.

Description	Catalog Number	
Keypad Unit Pricing	HMI-KPN-201	Numeric and Function Keypad (for QPJ and QPK only)
	HMI-KPN-301	Numeric and Function Keypad (for 9" Display)
	HMI-KPN-302	Numeric and Function Keypad (for 10.5" Display)
	HMI-KPN-401	Numeric and Function Keypad (for 7.4" Display OPGCxxx0000)
	HMI-KPN-402	Numeric and Function Keypad (for 10.5" Display QPICxxx0000)
	HMI-KPN-403	Numeric and Function Keypad (for 12.1" Display QPLCxxx0000)

Additional Accessories

Description	Catalog Number	
Miscellaneous	HMI-AGO-201	Anti-Glare Overlay for 9" display (5 per pack)
	HMI-AGO-202	Anti-Glare Overlay for 10.5" display (5 per pack)
	HMI-AGO-203	Anti-Glare Overlay for 5" display (5 per pack)
	HMI-AGO-204	Anti-Glare Overlay for 6" display (5 per pack)
	HMI-BEZ-201	Stainless Steel NEMA 4X Bezel for 5" Color or Mono QPJ-2xxxx-xxx
	HMI-BEZ-202	Stainless Steel NEMA 4X Bezel for 9" EL QPI-2xxxx-Exx
	HMI-BEZ-203	Stainless Steel NEMA 4X Bezel for 10.5" Color STN QPI-2xxxx-Sxx, TFT QPI-2xxxx-Cxx, or QPI-2xxxx-Lxx
	HMI-BEZ-204	Stainless Steel NEMA 4X Bezel for 6" Color or Mono QPK-2xxxx-xxx
	HMI-BEZ-205	Stainless Steel NEMA 4X Bezel for 12.1" Color QPL-2xxxx-xxx
	HMI-BEZ-403	Stainless Steel NEMA 4X Bezel for 10.5" QPICxxx0000
	HMI-BEZ-405	Stainless Steel NEMA 4X Bezel for 12.1" QPLCxxx0000
	HMI-BEZ-406	Stainless Steel NEMA 4X Bezel for 7.4" OPGCxxx0000
	HMI-COV-201	Front sheet cover for 9" EL QPI-2xxxx-Exx (10 per pack)
	HMI-COV-202	Front sheet cover for 10.5" Color STN QPI-2xxxx-Sxx, TFT QPI-2xxxx-Cxx or LCD QPI-2xxxx-Lxx (10 per pack)
	HMI-COV-203	Front sheet cover for 5" Color or Mono QPJ-2xxxx-xxx (20 per pack)
	HMI-COV-204	Front sheet cover for 6" Color or Mono QPK-2xxxx-xxx (20 per pack)
	HMI-COV-205	Front sheet cover (hard) for 12.1" Color QPL-2xxxx-xxx (5 per pack)
	HMI-CCT-201	Replacement Cold Cathode Backlight Tube for 10.5 Color STN QPI-2xxxx-Sxx or TFT-QPI-2xxxx-Cxx
	HMI-CCT-202	Replacement Cold Cathode Backlight Tube for 5" Color or Mono QPJ-2xxxx-xxx
	HMI-CCT-203	Replacement Cold Cathode Backlight Tube for 6" Color or Mono QPK-2xxxx-xxx
	HMI-CCT-205	Replacement Cold Cathode Backlight Tube for 12.1" Color QPL-2xxxx-C2P
	HMI-CAB-C49	IBM AT 9 pin F RS232 cable for downloading to QuickPanel and QuickPanel Jr. (10')
	HMI-CAB-C99	Printer cable, QuickPanel printer port, 14-pin Male to 36-pin Male Centronics
	HMI-CAB-C105	Printer cable, QuickPanel tool port to 9 pin female connector, RS-232, 10ft.
	HMI-CAB-ETH	Ethernet Crossover Cable
	HMI-ADP-001	Adapter plate allows cutout for QPI 10.5" unit to be used with 9" EL QPI-2xxxx-Exx
	510-1000-004	24 VDC, 1.3 Amp power supply, enclosed design for desktop or panel mounting, with on/off switch (for 5" or 6" Color or Mono QPJ-2xxxx-xxx or QPK-2xxxx-xxx)
	510-1000-041	24 VDC, 2 Amp power supply, enclosed design for desktop with on/off switch for QPI-xDxxx-xxx units

© 2002 GE Fanuc Automation North America, Inc.

QuickPanel is a trademark and Genius is a registered trademark of GE Fanuc Automation North America, Inc.

Windows is a registered trademark of Microsoft Corporation.

All other trademarks are property of their respective owners.

*CE marked units available upon request. Please consult factory.

ADDITIONAL RESOURCES

For detailed technical specifications and product ordering information, please visit the GE Fanuc e-catalog, on-line at:

www.gefanuc.com



GE Fanuc Automation

GE Fanuc Automation Information Centers
 USA and Canada 1-800-648-2001
 Europe and Middle East (352) 727979-1
 Asia Pacific 65-566-4918
 Latin America (610) 437-7932
 Mexico 1-800-989-1244

QUICKPANEL FAMILY

FEATURES

Communicates with over 70 PLCs and communication networks including Allen-Bradley Remote I/O, Data Highway Plus and DeviceNet, GE Genius I/O and Modicon Modbus Plus and Profibus

All Models programmed by the same award winning QuickDesigner software

A size and display type for every budget

Standard NEMA 4X/12

UL, CUL, Class 1 Division 2 and CE approvals

Keypads available

2-year warranty



DESCRIPTION

The QuickPanel family of touchscreen operator interfaces is a practical and cost effective replacement for a variety of discrete devices, from push buttons and pilot lights to message centers. Free form static and dynamic graphics can be added to present an information-rich picture to the operator in a single glance. Several screen technologies and sizes provide bold, clear displays in color or monochrome. Each unit communicates with all major PLCs and PLC networks including A-B Remote I/O, Data Highway Plus, GE Genius I/O and Modbus Plus. The industrially designed QuickPanel is rated NEMA 12/4x, IP65. Best of all, its simple yet versatile design will increase your productivity at a lower installed cost.

All QuickPanel models share the same user friendly, Win-

dows-based graphic editor, QuickDesigner. It offers a comprehensive set of panel operations, including: push buttons, selector switches, pilot lights, trend displays, text and numeric data displays, bar-graph displays, static and dynamic bitmaps or object oriented images and more. Each of these operations function as naturally as their discrete counterpart -- push buttons toggle on and off at a touch, pilot lights glow to indicate active status, and so forth. Despite its impressive array of features, QuickDesigner is easy to use. Creating a control panel is as simple as dragging an object from the toolbox, positioning it on the panel and filling in specifications such as text label, color and PLC address. We promise that you will be configuring applications within 10 minutes or we will give your money back!

QUICKPANEL JR.

QuickPanel jr. 5" and 6" STN Color and Monochrome LCD

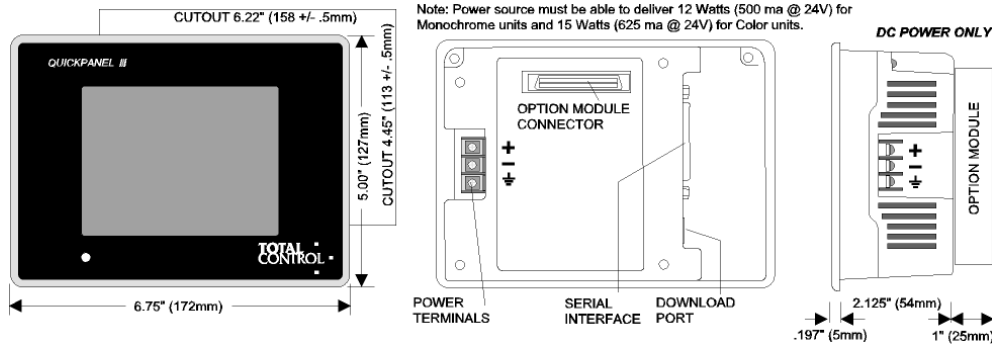
DESCRIPTION

The QuickPanel jr. is a practical and cost effective replacement for a variety of discrete devices, from push buttons and pilot lights to message centers. Free form static and dynamic graphics can be added to present an information-rich picture to the operator in a single glance. Despite its small size, the QuickPanel's 5" or 6" diagonal screen with 320W x 240H pixel format provides a sharp display in color or monochrome. Each unit communicates with all

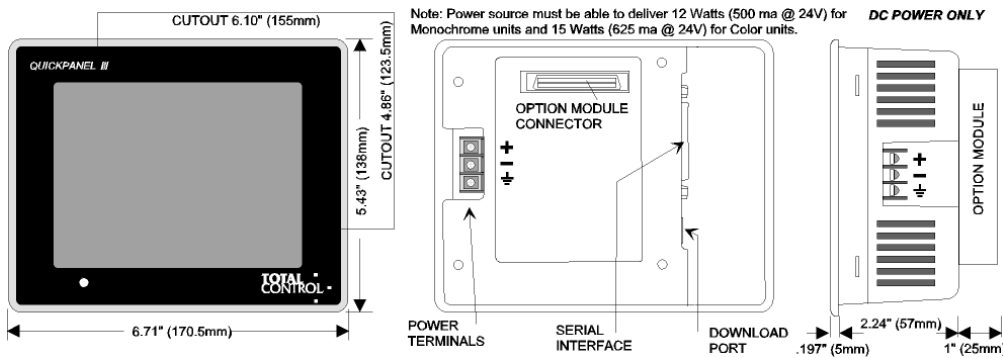
major PLCs and communication networks including A-B Remote I/O, Data Highway Plus, DeviceNet, Modicon Modbus Plus, Profibus and GE Genius (some require an optional, field-installed module). The industrially designed QuickPanel is rated NEMA 12/4x. Best of all, its simple yet versatile design will increase your productivity at a lower installed cost.

DIMENSIONS

5" Monochrome LCD & Color STN

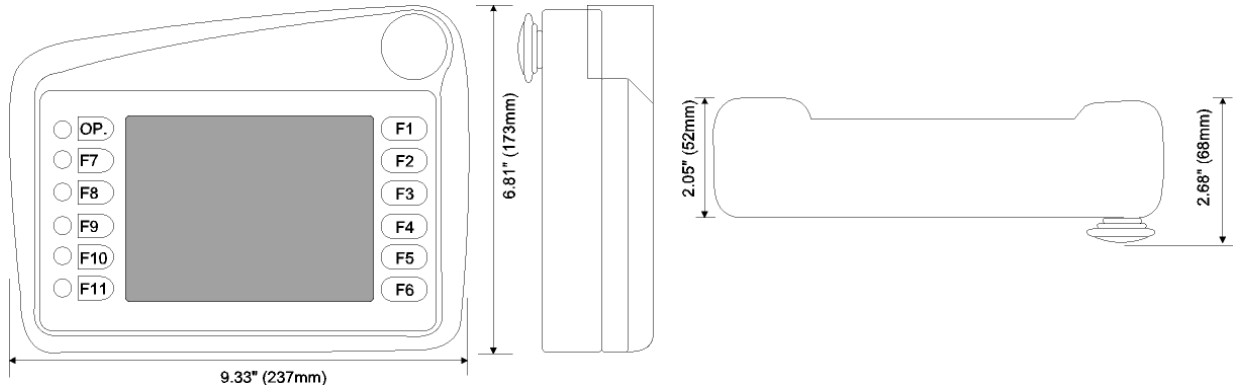


6" Monochrome LCD & Color STN

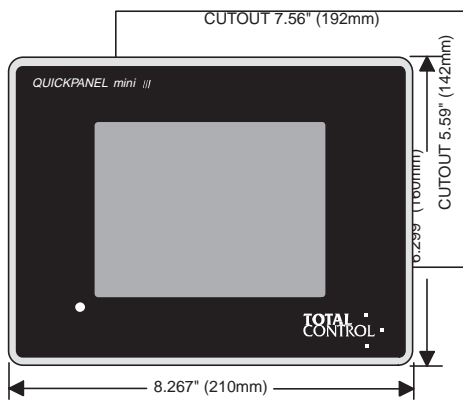


QUICKPANEL JR.

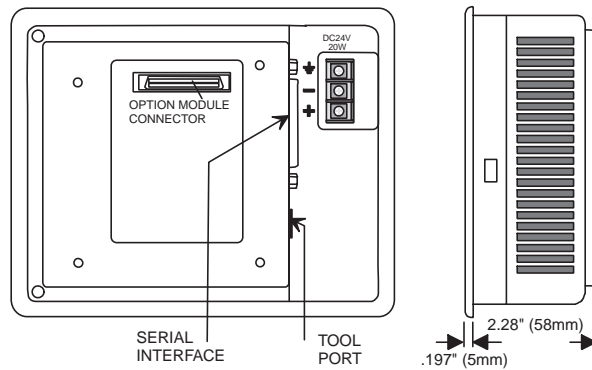
6" Hand Held QuickPanel Monochrome & Color STN



6" QuickPanel Mini Monochrome



Note: Power source must be able to deliver 20 Watts (833 ma @ 24V) **DC POWER ONLY**



QUICKPANEL JR.

SPECIFICATIONS

	5" LCD Mono QPJ-2D100-L2P	5" STN Color QPJ-2D100-S2P	6" LCD Mono QPK-2D100-L2P	6" STN Color QPK-2D100-S2P
Electrical				
Operating Voltage	20.4 to 27.6 VDC	20.4 to 27.6 VDC	20.4 to 27.6 VDC	20.4 to 27.6 VDC
Power Consumption	12 Watts Max	12 Watts Max	15 Watts Max	15 Watts Max
Power Failure Immunity	20 ms. Max	20 ms. Max	20 ms. Max	20 ms. Max
Withstand Voltage	1500 VAC (10 ma Max., 1 Min.)	1500 VAC (10 ma Max., 1 Min.)	1500 VAC (10 ma Max., 1 Min.)	1500 VAC (10 ma Max., 1 Min.)
Insulation	10 M (@ 500 VDC	10 M (@ 500 VDC	10 M (@ 500 VDC	10 M (@ 500 VDC
Noise Immunity	1000 V(p-p) 1µs pulse	1000 V(p-p) 1µs pulse	1000 V(p-p) 1µs pulse	1000 V(p-p) 1µs pulse
Environmental				
Operating Temperature	0 to 50° C	0 to 45° C	0 to 50° C	0 to 45° C
Storage Temperature	-20 to 60° C	-20 to 60° C	-20 to 60° C	-20 to 60° C
Operating Humidity	20 to 85% RH Non-Condensing	20 to 85% RH Non-Condensing	20 to 85% RH Non-Condensing	20 to 85% RH Non-Condensing
Storage Humidity	5 to 85% RH Non-Condensing	5 to 85% RH Non-Condensing	5 to 85% RH Non-Condensing	5 to 85% RH Non-Condensing
Vibration	10 to 25 Hz, 2G on each of X, Y, Z 30 min.	10 to 25 Hz, 2G on each of X, Y, Z 30 min.	10 to 25 Hz, 2G on each of X, Y, Z 30 min.	10 to 25 Hz, 2G on each of X, Y, Z 30min.
Mechanical				
Dimensions	5.0" H x 6.75" W x 2.125" D	5.0" H x 6.75" W x 2.125" D	5.43"Hx6.71"W x 3.437" D	5.43"Hx6.71"Wx 3.437" D
Weight	1.5 lbs.	1.5 lbs.	1.5 lbs.	1.5 lbs.
Cooling	Natural Air Convection	Natural Air Convection	Natural Air Convection	Natural Air Convection
Installation	Front Mount	Front Mount	Front Mount	Front Mount
Display				
Display Type	LCD	STN LCD	LCD	STN LCD
Pixel Resolution	240 H x 320 W	240 H x 320 W	240 H x 320 W	240 H x 320 W
Colors	White/Grey + Flash	8 Solid + 8 Flash	White/Grey + Flash	8 Solid + 8 Flash
Viewing Area	4"W X 3"H 5" Diagonal	4"W X 3"H 5" Diagonal	5"W X 4"H "6" Diagonal	5"W X 4"H 6" Diagonal
Touch Panel				
Resolution	15 W x 11 H	15 W x 11 H	15 W x 11 H	15 W x 11 H
External Interface				
Serial Port (SIO)	Yes	Yes	Yes	Yes
Download Port	Yes	Yes	Yes	Yes
Optional Interfaces				
A-B Remote I/O	QPJ-ABR-201	QPJ-ABR-201	QPJ-ABR-201	QPJ-ABR-201
A-B DH Plus	QPJ-ABD-201	QPJ-ABD-201	QPJ-ABD-201	QPJ-ABD-201
Modbus Plus	QPJ-MBP-201	QPJ-MBP-201	QPJ-MBP-201	QPJ-MBP-201
Genius I/O	QPJ-GEG-201	QPJ-GEG-201	QPJ-GEG-201	QPJ-GEG-201
Profibus	QPJ-PBS-201	QPJ-PBS-201	QPJ-PBS-201	QPJ-PBS-201
DeviceNet	QPJ-DVN-202	QPJ-DVN-202	QPJ-DVN-202	QPJ-DVN-202
Interbus-S	QPJ-IBS-201	QPJ-IBS-201	QPJ-IBS-201	QPJ-IBS-201

QUICKPANEL JR.

QPH Specifications	
Power Supply	20.4-27.6 VDC, 12W max (typ 10W)
Display	6" Passive STN Color, 5" W x 4" H x 6.4" diagonal viewing area
Touch Screen	Analog resistive, 15 W x 11 H resolution
Resolution	240 x 320 pixels, 8 Solid colors, 8 Flashing colors
Temperature	Operating: 0-40°C, -20-60°C storage
Humidity	20-85% non-condensing
Shock	10-25Hz (2G on each of X, Y, Z 30 min.)
Dimensions	9.33" W x 6.81" H x 2.68" D (237mmW x 173mmH x 68mmD)
Weight	1.9lbs (870g)
Rating	IP63, NEMA1
Software	Quick Designer Advanced (3.1 or later)

QPM Specifications	
Power Supply	20.4-27.6 VDC, 12W max
Display	6" diagonal monochrome LCD with flourescent backlight
Touch Screen	Analog resistive
Resolution	240 x 320 pixels
Temperature	Operating: 0-50°C
Humidity	30-85% non-condensing
Dimensions	8.267" W x 6.299" H x 2.28" D (210mm W x 160mm H x 58mm D)
Weight	1.65lbs
Memory	5 Panels
Rating	NEMA12/4x self-certified, CE and UL 1950 Approved
Software	Quick Designer (3.32 or later, c/w reduced feature set for QUICKPANEL Mini - see illustration at right)



QUICKPANEL JR.

ACCESSORIES

Catalog Number	Description
HMI-AGO-203	Anti-glare overlay for 5" or 6" Color or Mono QPJ-2xxxx-xxx
HMI-AGO-204	Anti-glare overlay for 5" or 6" Color or Mono QPK-2xxxx-xxx
HMI-BEZ-201	Stainless Steel NEMA 4X Bezel for 5" Color or Mono QPJ-2xxxx-xxx
HMI-BEZ-204	Stainless Steel NEMA 4X Bezel for 6" Color or Mono QPK-2xxxx-xxx
HMI-COV-203	Front sheet cover for 5" Color or Mono QPJ-2xxxx-xxx (20 per pack)
HMI-COV-204	Front sheet cover for 6" Color or Mono QPK-2xxxx-xxx (20 per pack)
HMI-CCT-202	Replacement Cold Cathode Backlight Tube for 5" Color or Mono QPJ-2xxxx-xxx
HMI-CCT-203	Replacement Cold Cathode Backlight Tube for 6" Color or Mono QPK-2xxxx-xxx
510-1000-004	24 VDC, 1.3Amp power supply, enclosed design for desktop or panel mounting, with on/off switch (for 5" or 6" Color or Mono QPJ-2xxxx-xxx or QPK-2xxxx-xxx, and Quickpanel Mini).

HOW TO ORDER

QUICKPANEL jr. Unit ¹

Catalog Number	Description
QPJ-2D100-L2P	5" Monochrome LCD for standard serial PLC drivers, 24VDC ^{UL}
QPJ-2D100-S2P	5" STN Color LCD for standard serial PLC drivers, 24VDC ^{UL}
QPK-2D100-L2P	6" Monochrome LCD for standard serial PLC drivers, 24VDC ^{UL}
QPK-2D100-S2P	6" STN Color LCD for standard serial PLC drivers, 24VDC ^{UL}

QUICKPANEL jr. Communication Modules (for all QPJ and QPK units) ²

Catalog Number	Description
QPJ-ABD-201	A-B Data Highway Plus interface module ^{UL}
QPJ-ABR-201	A-B 1771 Remote I/O interface module ^{UL}
QPJ-GEG-201	General Electric Genius I/O interface module ^{UL}
QPJ-MBP-201	Modicon Modbus Plus interface module ^{UL}
QPJ-PBS-201	Profibus interface module
QPJ-DVN-202	DeviceNet interface module
QPJ-IBS-201	Interbus-S interface module

QUICKSTART jr. Everything you need for your first project!

A color or monochrome 5" or 6" QuickPanel jr.	PLC cables included:
QuickDesigner for Windows™ off-line editor ³	HMI-CAB-C53
Full Documentation	HMI-CAB-C58
Download Cable	HMI-CAB-C82
24 VDC Power Supply, 1.3 Amp	HMI-CAB-C83

Catalog Number	Description
QJ-2D100-L2P	5" Monochrome LCD for standard serial PLC drivers, 24VDC ^{UL}
QJ-2D100-S2P	5" STN Color LCD for standard serial PLC drivers, 24VDC ^{UL}
QK-2D100-L2P	6" Monochrome LCD for standard serial PLC drivers, 24VDC ^{UL}
QK-2D100-S2P	6" STN Color LCD for standard serial PLC drivers, 24VDC ^{UL}

The trademarks contained herein are the exclusive property of their respective owners.

¹ All monochrome and color models on this and subsequent pages are subject to schedules L and L1 respectively.

² All communications modules on this and subsequent pages are subject to schedule E.

³ For PLC driver availability, refer to the QuickDesigner Software section.

^{UL} UL listed; CUL, UL listed to Canadian Standards; for use in Class I, Group A, B, C, D, Div 2 (UL1604)

CE marked units available upon request. Please consult factory.

QUICKPANEL JR.

Handy QUICKPANEL Unit

Catalog Number	Description
QPH-2D100-L2P	6" Monochrome LCD w/touchscreen, Function keys, E-Stop For standard serial PLC drivers, no comm modules, 24VDC
QPH-2D100-S2P	6" Color STN LCD w/touchscreen, Function keys, E-Stop For standard serial PLC drivers, no comm modules, 24VDC
HMI-CAB-A02	Cable, 24VDC, RS232C and RS422, E-stop, buzzer
HMI-JBX-201	Junction Box. Power, PLC & signal connections
QBH-2D100-L2P	Quick Bundle. Includes 6" Monochrome LCD, A02 cable, power supply, junction box.
QBH-2D100-S2P	Quick Bundle. Includes 6" Color STN LCD, A02 cable, power supply, junction box.

QUICKPANEL Mini

Catalog Number	Description
QPM-2D100-L2P	6" Monochrome LCD w/touchscreen for standard serial PLC drivers, reduced feature set, 24VDC

QUICKPANEL - LARGE UNITS

DESCRIPTION

QUICKPANEL 9" Monochrome EL, 10.5" Color STN, TFT or Monochrome LCD, 12.1" Color TFT

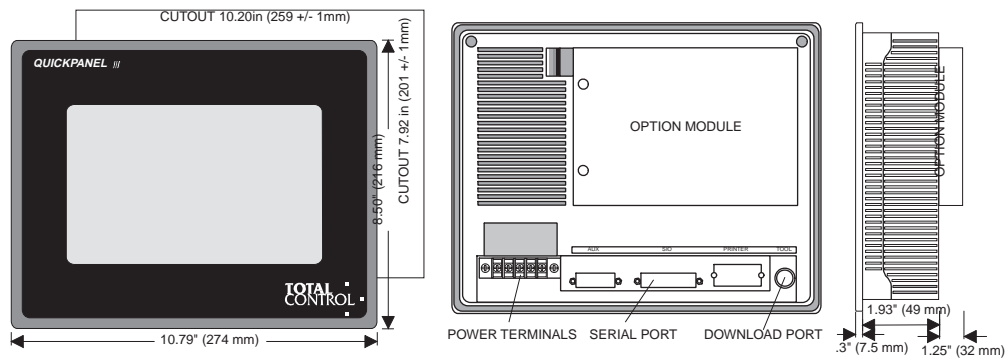
The larger members of the QuickPanel Family are identical to the QuickPanel jr. in every respect except for having about four times as much viewing area. The 12.1" diagonal display has 800 W x 600 H pixels, the 10.5" diagonal display has 640 W x 480 H pixels and the EL has a 9" diagonal screen with a 640 W x 400 H pixel format. Each provides a bold, clear display. Like their smaller counterparts, these are practical and cost effective replacements for a variety of discrete devices, from push buttons and pilot lights to message centers. Free form static and dynamic graphics can be added to present an information-rich picture to the operator in a single glance. Each unit communicates with all major PLCs and PLC networks including A-B Remote I/O, Data Highway Plus, DeviceNet, Modbus Plus, Profibus and GE Genius (some require an optional, field-installed module). All this comes in a slim-line,

compact package. Best of all, its simple yet versatile design will increase your productivity at a lower installed cost.

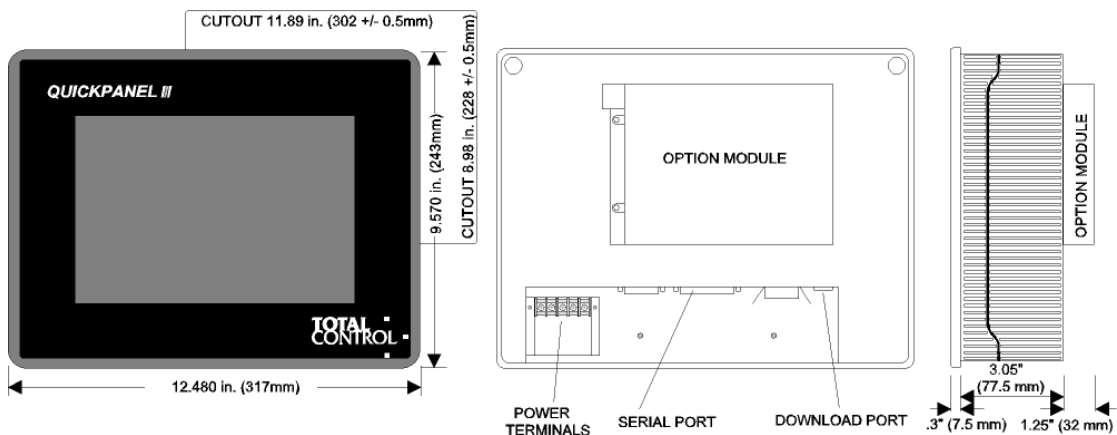
Total Control Products now offers another new technical innovation in industrial process control...the Video QuickPanel. This member of the QuickPanel family provides three channels of video input. Up to four video display objects can appear on a panel. With this dynamic enhancement, your machine process can now be monitored and controlled directly by the machine operator. The QuickPanel Video combines a 10.5", 640 x 480 Color TFT flat panel display with a resistive touch panel into a compact package. The unit is compatible with Quick Designer Advanced Software. All the inputs are software selectable, programmed just like any other QuickPanel operator.

DIMENSIONS

9" Monochrome EL



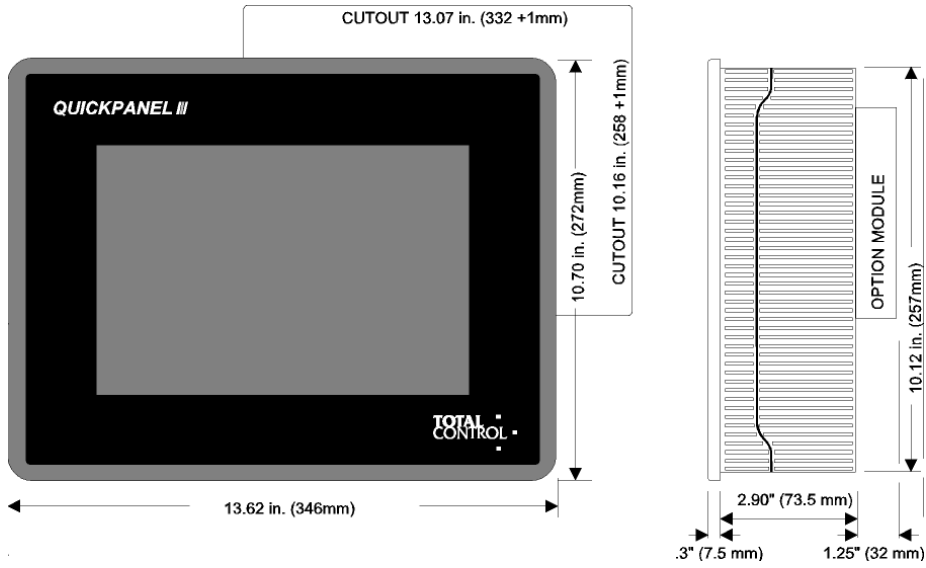
10.5" Monochrome, Color STN & TFT



QUICKPANEL - LARGE UNITS

QUICKPANEL

12.1" Color TFT



QUICKPANEL - LARGE UNITS

SPECIFICATIONS (Old Part Numbers- See next pages for updated PN and Specs.)

	9" Electroluminescent QPI-2x100-E2P	10.5" LCD Mono QPI-2D100-L2P	10.5" STN Color QPI-2x100-S2P	10.5" TFT Color QPI-2x100-C2P	12.1" TFT Color QPL-2x100-C2P
Electrical					
Operating Voltage	85 to 132 VAC 20.4-27.6 VDC 50/60Hz	20.4-27.6 VDC 50/60 Hz	85 to 132 VAC 20.4-27.6 VDC 50/60Hz	85 to 132 VAC 20.4-27.6 VDC 50/60Hz	85 to 132 VAC 20.4-27.6 VDC 50/60Hz
Power Consumption	50 VA Max	50 VA Max	50 VA Max	50 VA Max	50 VA Max
Power Failure Immunity	20 ms. Max	20 ms. Max	20 ms. Max	20 ms. Max	20 ms. Max
Withstand Voltage (Min.)	1500 VAC (10 ma Max., 1 Min.)	1500 VAC (20 ma max., 1 min.)	1500 VAC (10 ma Max., 1 Min.)	1500 VAC (10 ma Max., 1 Min.)	1500 VAC (10 ma Max., 1
Insulation Noise Immunity	10 M(@ 500 VDC 1000 V(p-p) 1µs pulse	10(@ 500 VDC 1200 V(p-p) 1µs pulse	10 M(@ 500 VDC 1000 V(p-p) 1µs pulse	10 M(@ 500 VDC 1000 V(p-p) 1µs pulse	10 M(@ 500 VDC 1000 V(p-p) 1µs pulse
Environmental					
Operating Temperature	0 to 50° C	0 to 45° C	0 to 45° C	0 to 45° C	0 to 45° C
Storage Temperature	-10 to 60° C	-10 to 60° C	-10 to 60° C	-10 to 60° C	-10 to 60° C
Operating Humidity	20 TO 85% rh Non-Condensing	30 to 85% RH Non-Condensing	30 to 85% RH Non-Condensing	30 to 85% RH Non-Condensing	30 to 85% RH Non-Condensing
Storage Humidity	5 to 85% RH Non-Condensing	5 to 85% RH Non-Condensing	5 to 85% RH Non-Condensing	5 to 85% RH Non-Condensing	5 to 85% RH Non-Condensing
Vibration	10 to 25 Hz, 2G on each of X, Y, Z 30 min.	10 to 25 Hz 2G on each of X, Y, Z 30 min.	10 to 25 Hz, 2G on each of X, Y, Z 30 min.	10 to 25 Hz, 2G on each of X, Y, Z 30 min.	10 to 25 Hz, 2G on each of X, Y, Z 30 min.
Mechanical					
Dimensions	10.8" H x 8.5" W x 1.93" D	9.57"H x 12.48" W x 3.05" D	12.48" H x 9.57" W x 3.05" D	12.48" H x 9.57" W x 3.05" D	10.70" H x 13.62" W x 4.45" D
Weight	4 lbs.	6.6 lbs.	7 lbs.	7 lbs.	8.4 lbs.
Cooling	Natural Air Convection	Natural Air Convection	Natural Air Convection	Natural Air Convection	Natural Air Convection
Installation	Front Mount	Front Mount	Front Mount	Front Mount	Front Mount
Display					
Display Type	Electroluminescent	LCD Monochrome	STN LCD	TFT LCD	TFT LCD
Pixel Resolution	400 H x 640 W	640 H x 480 W	480 H x 640 W	480 H x 640 W	600 H x 800 W
Colors	Amber + Flash	White/Black + Flash	8 Solid + 8 Flash	8 Solid + 8 Flash	8 Solid + 8 Flash
Viewing Area	7.625" W x 4.875" H 9" Diagonal	8.48"W x 6.32" H 10.5" Diagonal	7.625" W x 5.75" H 10.5" Diagonal	7.625" W x 5.75" H 10.5" Diagonal	9.8" W x 7.35" H 12.1" Diagonal
Touch Panel					
Resolution	15 W x 11 H	31 W x 19 H	31 W x 23 H	31 W x 23 H	39 W x 29 H
External Interface					
Serial Port (SIO)	Yes	Yes	Yes	Yes	Yes
Download Port	Yes	Yes	Yes	Yes	Yes
Optional Interfaces					
A-B Remote I/O	QPI-ABR-201	QPI-ABR-201	QPI-ABR-201	QPI-ABR-201	QPI-ABR-201
A-B DH Plus	QPI-ABD-201	QPI-ABD-201	QPI-ABD-201	QPI-ABD-201	QPI-ABD-201
Modbus Plus	QPI-MBP-201	QPI-MBP-201	QPI-MBP-201	QPI-MBP-201	QPI-MBP-201
Genius I/O	QPI-GEG-201	QPI-GEG-201	QPI-GEG-201	QPI-GEG-201	QPI-GEG-201
Profibus	QPI-PBS-201	QPI-PBS-201	QPI-PBS-201	QPI-PBS-201	QPI-PBS-201
DeviceNet	QPI-DVN-202	QPI-DVN-202	QPI-DVN-202	QPI-DVN-202	QPI-DVN-202
Interbus-S	QPI-IBS-201	QPI-IBS-201	QPI-IBS-201	QPI-IBS-201	QPI-IBS-201

9" EL QuickPanel

Description		
Style (Model Number)	9" EL Monochrome (2780027-01)	9" EL Monochrome
Catalog Number	QPI3D200E2P	QPI31200E2P
Electrical		
Operating Voltage	24 VDC \pm 20%	85 to 132 VAC, 50/60 Hz
Power Consumption	50 VA max. 20VA typical	50 VA or less
Power Failure Immunity	20 ms. max	
Withstand Voltage	1000 VAC (10mA max 1Min.)	1500 VAC (20ma max., 1 min)
Insulation	10M (at 500VDC)	
Noise Immunity	1000V(p-p) 1ms pulse	1200 V (p-p) 1 μ s pulse
Environmental		
Operating Temperature	0 to 50°C	
Storage Temperature	-10 to 60°C	
Operation Humidity	20% to 85% RH Non-Condensing	
Storage Humidity	5% to 85% RH Non-Condensing	
Vibration	10 to 25 Hz, 2G on each of X,Y,Z 30 min	
Mechanical		
Dimensions (W x H x D)	10.79" (274 mm) x 8.50" (216 mm) x 2.24" (57 mm)	
Cutout (W x H)	10.20" (259 \pm 1 mm) x 7.92" (201 \pm 1 mm)	
Weight	4.4 lbs.	
Cooling	Natural Air Convection	
Installation	Front Mount	
Protection	IP65f, NEMA #250 TYPE 4X/12	
Display		
Display Type	High Intensity EL Display	
Pixel Resolution	640 W x 400 H	
Colors	Amber (monochrome), Flash, Reverse Video	
Viewing Area (W x H)	9" diagonal, 7.68" (192mm) x 4.8" (120mm)	
Memory		
Memory Size	2MB Flash EPROM + 96K SRAM backup memory (requires lithium battery)	
Touch Panel		
Resolution	15 W x 11 H	
External Interface		
Serial Port (SIO)	Yes	
Download Port	Yes	
Printer Port	Centronics (HP Laserjet PCL4 compatible, NEC PR series, EPSON ESC/P24 or equivalent)	
Agency Approvals		
UL	Yes; Class I, Groups A,B,C, and D, Division 2 (file # E182139)	No
CE Mark	Yes	No
Optional Interfaces		
A-B Remote I/O	QPI-ABR-201 (UL File # E177256)	
A-B DH Plus	QPI-ABD-201 (UL File # E177256)	
Modbus Plus	QPI-MBP-201 (UL File # E177256)	
Genius I/O	QPI-GEG-201 (UL File # E177256)	
Profibus DP Slave	QPI-PBS-201	
Profibus DP Slave	QPI-PBS-202; with memory retention (CE Approved)	
DeviceNet	QPI-DVN-202 (UL File # E177256)	
Interbus-S	QPI-IBS-201	
CANOpen	QPI-COS-201	

10.4" QuickPanel (110 VAC)

Description		
Style	10.4" STN Color	10.4" TFT Color
Catalog Number	QPI31200S2P	QPI31200C2P
Electrical		
Operating Voltage	85 to 132 VAC, 50/60 Hz	
Power Consumption	50 VA or less	
Power Failure Immunity	20 ms. max	
Withstand Voltage	1500 VAC (20ma max., 1 min)	
Insulation	10M (at 500VDC)	
Noise Immunity	1200 V (p-p) 1 μ s pulse	
Environmental		
Operating Temperature	0 to 40°C	
Storage Temperature	-10 to 60°C	
Operation Humidity	30% to 85% RH Non-Condensing	
Storage Humidity	5% to 85% RH Non-Condensing	
Vibration	10 to 25 Hz (X, Y, Z direction 30 min. each 19.6m/s ²)	
Mechanical		
Dimensions (W x H x D)	12.48" (317 mm) x 9.56" (243 mm) x 3.35" (85 mm)	
Cutout (W x H)	11.89" (302 \pm 1 mm) x 8.97" (228 \pm 1 mm)	
Weight	7.71 lbs.	
Cooling	Natural Air Convection	
Installation	Front Mount	
Protection	IP65f, NEMA #250 TYPE 4X/12	
Display		
Display Type	STN Color	TFT Color
Pixel Resolution	640 W x 480 H	
Colors	64 Colors	
Backlight	CFL (40000h lifespan)	
Viewing Area (W x H)	10.5" diagonal, 8.48" (211.2 mm) x 6.32" (158.4 mm)	
Memory		
Memory Size	2MB Flash EPROM	
Touch Panel		
Resolution	32 W x 24H	
External Interface		
Serial Port (SIO)	Yes	
Download Port	Yes	
Printer Port	Centronics (HP Laserjet PCL4 compatible, NEC PR series, EPSON ESC/P24 or equivalent)	
Agency Approvals		
UL	No (Available on 24VDC unit)	
CE Mark	No (Available on 24 VDC unit)	
Optional Interfaces		
A-B Remote I/O	QPI-ABR-201 (UL File # E177256)	
A-B DH Plus	QPI-ABD-201 (UL File # E177256)	
Modbus Plus	QPI-MBP-201 (UL File # E177256)	
Genius I/O	QPI-GEG-201 (UL File # E177256)	
Profibus DP Slave	QPI-PBS-201	
Profibus DP Slave	QPI-PBS-202; with memory retention (CE Approved)	
DeviceNet	QPI-DVN-202 (UL File # E177256)	
Interbus-S	QPI-IBS-201	
CANOpen	QPI-COS-201	

10.5" QuickPanel (24VDC)

Description			
Style (Model Number)	10.5" LCD Monochrome (0880001-01)	10.5" STN Color (2780027-03)	10.5" TFT Color (2780027-02)
Catalog Number	QPI2D100L2P	QPI3D200S2P	QPI3D200C2P
Electrical			
Operating Voltage	24 VDC ±20%		
Power Consumption	50 VA max. 20VA typical		
Power Failure Immunity	20 ms. max		
Withstand Voltage	1000 VAC (10mA max 1Min.)		
Insulation	10M (at 500VDC)		
Noise Immunity	1000V(p-p) 1ms pulse		
Environmental			
Operating Temperature	0 to 40°C		
Storage Temperature	-10 to 60°C		
Operation Humidity	30% to 85% RH Non-Condensing		
Storage Humidity	5% to 85% RH Non-Condensing		
Vibration	10 to 25 Hz, 2G on each of X,Y,Z 30 min		
Mechanical			
Dimensions (W x H x D)	12.48" (317 mm) x 9.57" (243 mm) x 3.05" (85 mm)		
Cutout (W x H)	332 +/- 1 mm x 258 +/- 1 mm		
Weight	< 3500 g		
Cooling	Natural Air Convection		
Installation	Front Mount		
Protection	IP65f, NEMA #250 TYPE 4X/12		
Display			
Display Type	LCD monochrome	STN LCD Color	TFT Color
Pixel Resolution	640 x 480 pixel (W x H)		
Colors	White / Black + Flash	64 Colors	64 Colors
Backlight	CFL (25000h lifespan)		CFL (40000h lifespan)
Viewing Area	10.5" diagonal, 8.48" (211.2 mm) x 6.32" (158.4 mm)		
Mechanical			
Memory Size	1MB Flash EPROM	2 MB Flash EPROM	2 MB Flash EPROM
Touch Panel			
Resolution	32 W x 24H		
External Interface			
Serial Port (SIO)	Yes		
Download Port	Yes		
Printer Port	Centronics (HP Laserjet PCL4 compatible, NEC PR series, EPSON ESC/P24 or equivalent)		
Agency Approvals			
UL	Yes; Class I, Groups A,B,C, and D, Division 2 (file # E177256)	Yes; Class I, Groups A,B,C, and D, Division 2 (file # E182139)	
CE Mark	Yes	No	
Optional Interfaces			
A-B Remote I/O	QPI-ABR-201 (UL File # E177256)		
A-B DH Plus	QPI-ABD-201 (UL File # E177256)		
Modbus Plus	QPI-MBP-201 (UL File # E177256)		
Genius I/O	QPI-GEG-201 (UL File # E177256)		
Profibus DP Slave	QPI-PBS-201		
Profibus DP Slave	QPI-PBS-202; with memory retention (CE Approved)		
DeviceNet	QPI-DVN-202 (UL File # E177256)		
Interbus-S	QPI-IBS-201		
CANOpen	QPI-COS-201		

12.1" TFT Color QuickPanel

Description		
Style (Model Number)	12.1" TFT (2780025-01)	12.1" TFT
Catalog Number	QPL2D100C2P	QPL21100C2P
Electrical		
Operating Voltage	24 VDC ±20%	85 to 132 VAC, 50/60 Hz
Power Consumption	50 W or less	50 VA or less
Power Failure Immunity	20 ms. max	
Withstand Voltage	1000 VAC (10mA max 1Min.)	1500 VAC (20ma max., 1 min)
Insulation	10M (at 500VDC)	
Noise Immunity	1000V(p-p) 1ms pulse	1200 V (p-p) 1 μs pulse
Environmental		
Operating Temperature	0 to 40°C	
Storage Temperature	-10 to 60°C	
Operation Humidity	30% to 85% RH Non-Condensing	
Storage Humidity	5% to 85% RH Non-Condensing	
Vibration	10 to 25 Hz, 2G on each of X,Y,Z 30 min	
Mechanical		
Dimensions (W x H x D)	13.62" (346 mm) x 10.71" (272 mm) x 3.19" (81 mm)	
Cutout (W x H)	13.07" (332 ±1 mm) x 10.16" (258±1 mm)	
Weight	8.38 lbs.	
Cooling	Natural Air Convection	
Installation	Front Mount	
Protection	IP65f, NEMA #250 TYPE 4X/12	
Display		
Display Type	Color TFT	
Pixel Resolution	800 W x 600 H	
Colors	64 Colors	
Viewing Area (W x H)	12.1" diagonal, 9.69" (246.13mm) x 7.26" (184.4mm)	
Memory		
Memory Size	2MB Flash EPROM	
Touch Panel		
Resolution	40 W x 30 H	
External Interface		
Serial Port (SIO)	Yes	
Download Port	Yes	
Printer Port	Centronics (HP Laserjet PCL4 compatible, NEC PR series, EPSON ESC/P24 or equivalent)	
Agency Approvals		
UL	UL Recognized, (file # E171486)	No
CE Mark	Yes	No
Optional Interfaces		
A-B Remote I/O	QPI-ABR-201 (UL File # E177256)	
A-B DH Plus	QPI-ABD-201 (UL File # E177256)	
Modbus Plus	QPI-MBP-201 (UL File # E177256)	
Genius I/O	QPI-GEG-201 (UL File # E177256)	
Profibus DP Slave	QPI-PBS-201	
Profibus DP Slave	QPI-PBS-202; with memory retention (CE Approved)	
DeviceNet	QPI-DVN-202 (UL File # E177256)	
Interbus-S	QPI-IBS-201	
CANOpen	QPI-COS-201	

QUICKPANEL - LARGE UNITS

QuickPanel Video Specifications

Power Supply	85 to 132 VAC 50/60 Hz @ 50VA max.
Display	10.5" Color TFT 8.48"W x 6.32"H x 10.5" diag.
Touch Screen	Analog resistive
Resolution	640 x 480 screen resolution, 32 x 24 touch panel resolution
Temperature	Operating: 0 - 45°C, -10 - 60°C storage
Humidity	30 - 85% non-condensing
Dimensions	9.75"H x 12.48"W x 3.05"D 243mmH x 317mmH x 317mmW x 85mmD
Weight	6.6lbs (3kg)

ACCESSORIES

Catalog Number	Description
HMI-AGO-201	Anti-glare overlay for 9" display (5 per pack)
HMI-AGO-202	Anti-glare overlay for 10.5" display (5 per pack)
HMI-BEZ-202	Stainless Steel NEMA 4X Bezel for 9" EL QPI-2xxxx-Exx
HMI-BEZ-203	Stainless Steel NEMA 4X Bezel for 10.5" Color STN QPI-2xxxx-Sxx, TFT QPI-2xxxx-Cxx, or QPI-2xxxxx-Lxx
HMI-BEZ-205	Stainless Steel NEMA 4X Bezel for 12.1" Color QPL-2xxxx-xxx
HMI-COV-201	Front sheet cover for 9" EL QPI-2xxxx-Exx (10 per pack)
HMI-COV-202	Front sheet cover for 10.5" Color STN QPI-2xxxx-Sxx, TFT QPI-2xxxx-Cxx or LCD QPI-2xxxx-Lxx (10 per pack)
HMI-COV-205	Front sheet cover for 12.1" Color QPL-2xxxx-xxx (10 per pack)
HMI-CCT-201	Replacement Cold Cathode Backlight Tube for 10.5 Color STN QPI-2xxxx-Sxx or TFT QPI-2xxxx-Cxx
HMI-CCT-205	Replacement Cold Cathode Backlight Tube for 12.1" Color QPL-2xxxx-C2P
510-1000-041	24 VDC, 2Amp power supply, enclosed design for desktop with on/off switch for QPI-xDxxx-xxx units.

All software and accessories are subject to schedule E.
CE marked units available upon request. Please consult factory.

HOW TO ORDER

QUICKPANEL Unit

Catalog Number	Description
QPI-21100-E2P	9" Monochrome EL for standard serial PLC drivers, 120VAC
QPI-21100-S2P	10.5" STN Color LCD for standard serial PLC drivers, 120VAC
QPI-21100-C2P	10.5" TFT Color for standard serial PLC drivers, 120VAC
QPL-21100-C2P	12.1" TFT Color for standard serial PLC drivers, 120VAC
QPI-2D100-L2P	10.5" Monochrome LCD for standard serial PLC drivers, 24VDC ^{UL}
QPI-2D100-E2P	9" Monochrome EL for standard serial PLC drivers, 24VDC ^{UL}
QPI-2D100-S2P	10.5" STN Color LCD for standard serial PLC drivers, 24VDC ^{UL}
QPI-2D100-C2P	10.5" TFT Color for standard serial PLC drivers, 24VDC ^{UL}
QPL-2D200-C2P	12.1" TFT Color for standard serial PLC drivers, 24VDC ^{UL}

QUICKPANEL Communication Modules (for all QPI & QPL units)

Catalog Number	Description
QPI-ABD-201	A-B Data Highway Plus interface module ^{UL}
QPI-ABR-201	A-B 1771 Remote I/O interface module ^{UL}
QPI-GEG-201	General Electric Genius I/O interface module ^{UL}
QPI-MBP-201	Modicon Modbus Plus interface module ^{UL}
QPI-PBS-201	Profibus Interface Module
QPI-DVN-202	DeviceNet Interface Module
QPI-IBS-201	Interbus-S Interface Module

QUICKPANEL Video Unit

Catalog Number	Description
QPI-211V0-C2P	10.5" TFT Color for standard serial PLC drivers, 120VAC with 3 NTSC video inputs

QUICKSTART Kits - Everything you need for your first project!

A 10.5" or 9" QuickPanel
QuickDesigner for WindowsTM off-line editor ⁴
Full Documentation
Download Cable
120 VAC Line Cord (for 9"EL and 10.5"STN) or
24VDC, 2Amp Power Supply (for 10.5" LCD)

PLC cables included:

HMI-CAB-C53	HMI-CAB-C82
HMI-CAB-C58	HMI-CAB-C83

Catalog Number Description

QSI-2D100-L2P	10.5" Monochrome LCD for standard serial PLC drivers, 24VDC
QSI-21100-E2P	9" Monochrome EL for standard serial PLC drivers, 120VAC
QSI-21100-S2P	10.5" STN Color LCD for standard serial PLC drivers, 120VAC
QSL-21100-C2P	12.1" TFT Color for standard serial PLC drivers, 120VAC

⁴ - For PLC driver availability, refer to the QuickDesigner Software section.

QUICKDESIGNER SOFTWARE

DESCRIPTION

QuickDesigner is a friendly Windows-based graphic editor that is common to all of the QuickPanel models. QuickDesigner offers a comprehensive set of panel operators, including: push buttons, selector switches, pilot lights, text and numeric data displays, bargraph displays, static and dynamic bitmaps or object oriented images and more. Each of these functions as naturally as its dis-

crete counterpart -- push buttons toggle on and off at a touch, pilot lights glow to indicate active status, and so forth. Despite its impressive array of features, QuickDesigner is easy to use. We promise that you will be configuring application screens within 10 minutes or we will give your money back!

QUICKDESIGNER Editor

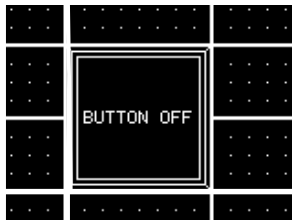
QuickDesigner software allows you to develop control panels far more easily than a hard-wired panel. It features tools - dynamic objects that function just like their hardware equivalents. For example, QuickPanel momentary push buttons function exactly like their hardware counterparts. When the momentary push button is pressed, the PLC bit tied to it is turned on. When it is released, the bit is turned off. The push buttons can be sized to any number of cells in 20 pixel increments and automatically align themselves to the touch grid.

The QuickDesigner development kit includes all the necessary components to create QuickPanel applications for your PLC. QuickDesigner software is provided on a CD which includes a complete user manual. A communications cable is supplied to facilitate downloads.

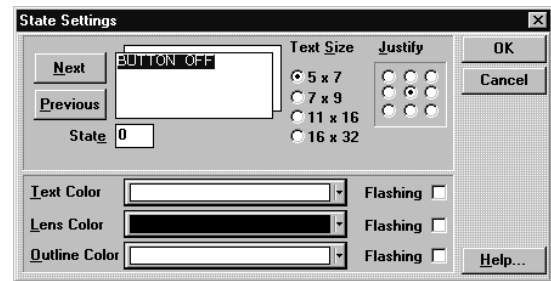
Creating a Control Operation

In this example we will create an illuminated push button. An illuminated push button is a combination push button and pilot light. Click the illuminated push button on the Toolbox or select the illuminated push button operator device from the "Tools" drop-down menu. The status line at the bottom of the screen will indicate which tool you have selected.

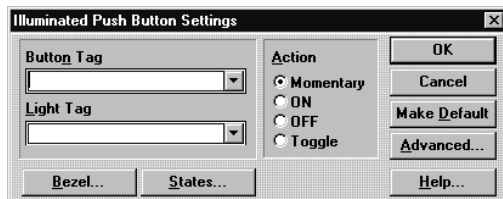
*Click the tool icon on the empty QuickDesigner panel.
The illuminated push button will appear across two cells.*



Pressing either the "bezel" or "states" buttons will display other dialog boxes.



The following dialog box will appear.



QUICKDESIGNER SOFTWARE

QuickDesigner Toolbox

Selector Switch

Allows turning on a single bit from a group of bits. Selector switches control two, three or four bits.



Video

Allows for the display of an external video image. Up to three channels of video input can be accepted.

Local Message Display

Allows the creation of up to 253 messages shown on the panel. Each message can have its own text and color attributes.



Pilot Light

Allows monitoring a bit and displaying of an "on" state and "off" state. Select from a rectangular display or the classic look.

Rectangular Drawing Tool



Text Tool/Static Text
Add information to your panels



Line/Polyline/Polygon

Time Display

Time is displayed in either AM/PM or military time.



Deselect



Bitmap Operator



Text Display
Reads data registers as ASCII characters.

Illuminated Push Button

Provides both a push button and a pilot light in the same space.



Print Push Button
Allows the printing of an entire panel to a supported printer

Word Push Button

Allows setting a value, incrementing or decrementing of a register.



Meter
Allow the display of values as a percentage fill of a semi-circle or a full circle.

Goto Panel Button

Allows changing from panel to panel.



Numeric Data Display
Allows showing the value in a data register.

Legend Plate

Static Text in a Defined Field



Circular Drawing Tool

Bar Graph

Bar graph displays a percentage fill of a bar. Scale, min., max., colors and tick marks are all changeable attributes. Bar graph colors can change based on bar graph color set points.



Local Image Display
Provides for animation of static objects. For example: draw a pump using a circle and a square. You can now use the local image display to provide color changes by monitoring tag variables.

Alarm Window

Three types of alarms: active, historical and log. Alarms can monitor bits or word values or both. Alarm status can be displayed with color attributes and a summary can be acknowledged and/or deleted.



Trending
Allows monitoring and displaying a variable at a defined frequency. A portion of, or the entire panel can be used to display the trend. Trend pens have color selection and line style.

Numeric Data Entry

Allows changing values in data registers. Typical applications include timer counter presets, batch setups, etc. A pre-configure keypad is automatically displayed when the numeric data entry tool is touched.



Push Button
Select from standard square or the classic "oiltight"/ Push buttons can be momentary (push on, release off) on, off, or toggle.

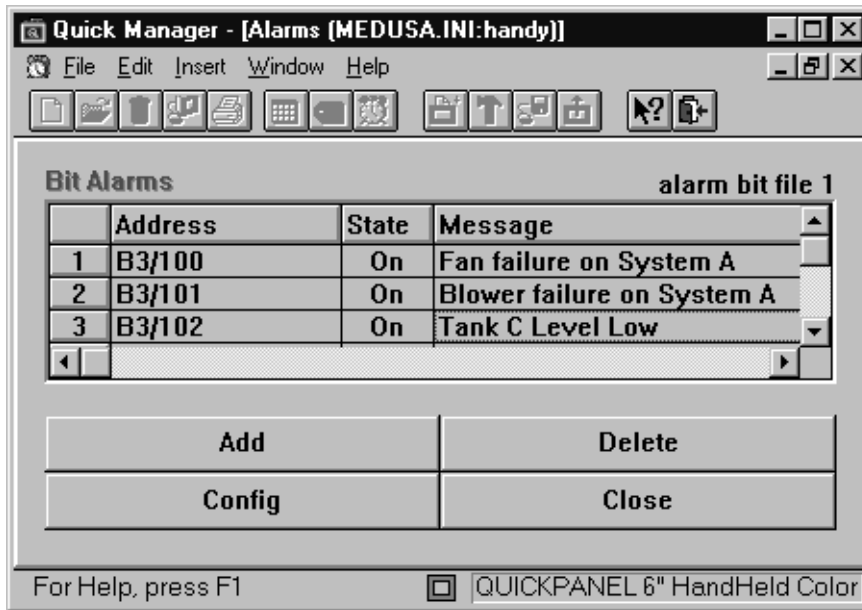


QUICKDESIGNER SOFTWARE

Alarm Files and Alarm Displays

Alarm files allow bits or values to be associated with a text string. An alarm table is built by defining the starting bit address name and how many consecutive bits will be in the table. An alarm message can then be associated with each bit. Files can also be built, which allow monitoring the value in a data register. An alarm message can be associated with each register value.

These alarm files are downloaded to the QuickPanel. The QuickPanel has an alarm display tool that provides a window into any of the three alarm queues: 1) The alarm queue displays currently active alarm conditions. 2) The historic queue displays alarm conditions that are currently active, those that have been acknowledged by operator personnel and those that have been corrected by personnel. 3) The event log queue lists all alarm activity in sequence and can provide time and date stamping as well as paper print-out. These various alarm types may be assigned individual color attributes for faster recognition when using a color QuickPanel.



A typical alarm screen

Alarm Management

QuickDesigner allows you to disable the **Del**, **Ack**, **Del All**, and **Ack All** buttons in the Alarm History screen. These buttons can be selected to be turned off in the Advanced area of the Alarms Configuration menu. This will allow the programmer to prevent operators from deleting or acknowledging alarms in the Alarm Management screen.

Bit Map Import

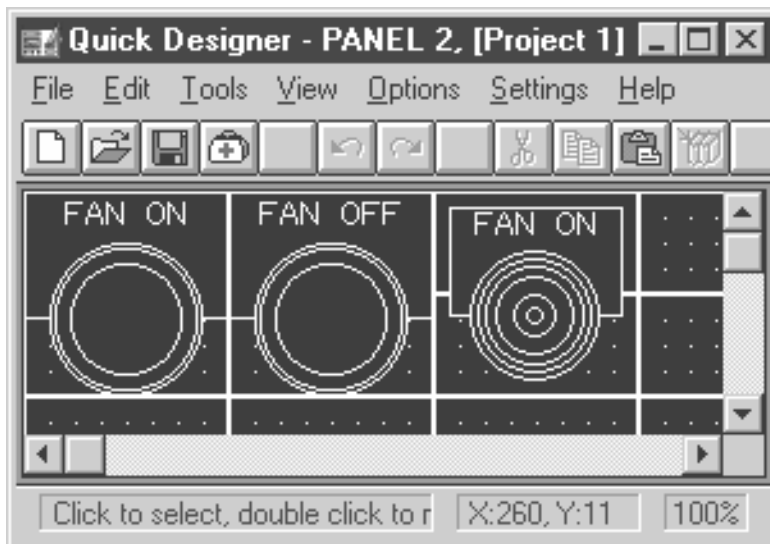
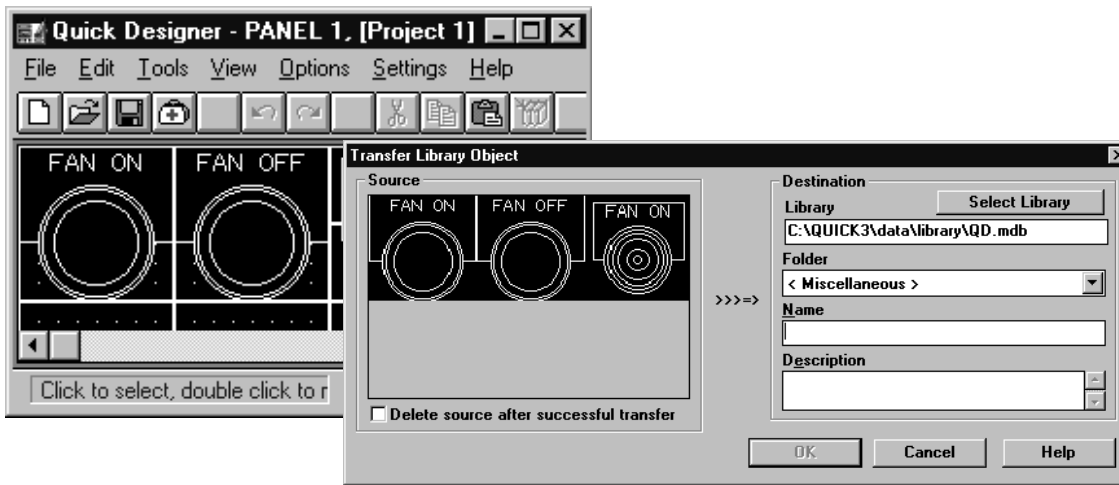
Static bit map import allows the QuickPanel to display any picture in a *.BMP (Bit Mapped Page) format such as logos or scanned drawings. But the real strength of the bit map graphic tool is that it provides mimic panel replacement. A representative machine or process picture can be located on the panel with a pilot light over it to display device status.

QUICKDESIGNER SOFTWARE

Library Files

The library feature allows you to collect a variety of defined panel operations along with their associated functions and file them for future use. You can archive any operation or group of operations at the time of creation or you can go back and retrieve from previously built panels (even if they were made in an older version of QuickDesigner) to develop your library. Then you can use this inventory of multipurpose panel "sections" over and over again to quickly finish whole panels in much the same way that many products are built from sub-assemblies.

Suppose, for example, that you create a 3 position selector switch and several days later you need to create another. You can choose text content, size and color for the legend and positions and background colors for the states, etc. This can be done rapidly in QuickDesigner. However, in one-tenth of the time you can drag the selector switch, ready-made from your library, and drop it onto the panel. A dialog box will automatically remind you to update the tags and PLC bits if necessary. It's that simple! You can have a complete, user-defined library that will allow you to assemble any panel you like with just a few keystrokes and clicks of the mouse.



Use library objects again...and again...and again.

QUICKDESIGNER SOFTWARE

Graphics

The QuickDesigner Editor provides a set of tools for drawing lines, poly-lines, polygons, circles and rectangles. Using these basic figures, you can create pictorial presentations of actual equipment and conditions on your manufacturing or process line. The editor also includes an assortment of stock images and standard ISA symbols.

Dynamic Graphics

Any of these static graphics can be made dynamic using the local image display tool. For example, a "pump graphic" can be displayed as "green" in the off state and "red" in the on state. The local image display can have up to 253 states.

MORE FEATURES

Upload from the QuickPanel

QuickDesigner has uploading capabilities. QuickDesigner now allows you to store a compressed copy of your application in the QuickPanel. The application must be downloaded from QuickDesigner 3.1 (or greater) with the Store application feature enabled. Applications previously downloaded in the QuickPanel cannot be uploaded into QuickDesigner 3.1 (or greater).

Separate, Compile and Download

QuickDesigner Version 3.1 (or greater) has the ability to download an application without having to recompile it each time. A Compile to File option in the software gives you a .CMP file extension. Whenever you want to download a particular project, just select the Download from File option and choose the compiled file you want to download.

Panel Password Protection

QuickDesigner Version 3.1 (or greater) has panel password protection. There are three levels of password security (Operator, Supervisor and Master) and up to 16 configurable passwords. Password setup can be found in the Setup -- System menu. To password protect a panel, select Settings in the Panels area. From there, select the level of panel access: Operator, Supervisor or Master. The Supervisor password can override the Operator password, and the Master password can override both the Supervisor and Operator password.

Print Panel

The print panel allows the current panel to be printed. The print panel supports EPSON, ESC/PLA, NEFC PR201 and HP LaserJet II (or compatible) printers.

Trending

Trending allows the ability to sample the value of a variable at a periodic rate and displays the information of a line. Trending supports 20 pens per project and 8 pens per chart display.

ACCESSORIES

800-1000-091	Manual, QuickDesigner Advanced Panel Editor software documentation
800-1000-092	Manual, QuickDesigner Communications documentation
800-1000-093	Manual, QuickPanel Hardware Reference
ACC-MAN-002	Three manual set
HMI-CAB-C49	IBM AT 9 pin female RS232 cable for downloading to QuickPanel and QuickPanel jr. (10 feet long)
HMI-CAB-C105	Printer cable, QuickPanel tool port to 9 pin female connector, RS-232, 10ft.

QUICKPANEL COMMUNICATIONS

PLC Communication Guide

PLC Manufacturer	PLC Type	Description	Catalog Number
Allen-Bradley	SLC 500, SLC 5/01, SLC 5/02, SLC 5/03	DH-485 program port, one SLC to one QUICKPANEL, no simultaneous program port.	HMI-CAB-C83
		DH-485 program port, one SLC to one QUICKPANEL, with simultaneous program port, 6 foot max.	HMI-CAB-C84
		DH-485 link via 1747-AIC module, multiple QUICKPANELS to multiple SLC's, 6 foot max.	HMI-CAB-C84
	SLC 5/03, SLC 5/04	Channel 0, 9 pin RS-232	HMI-CAB-C52
	PLC-5	Channel 0, 25 pin RS-232 Channel 0, 25 pin RS-422 KF2 module, 25 pin RS-232	HMI-CAB-C53 HMI-CAB-C107 HMI-CAB-C51
	PLC-2	Program Port, 15 pin RS-422	HMI-CAB-C90
	MicroLogix	Program Port, 8 pin circular DIN RS-232	HMI-CAB-C106
	Remote I/O	Use QPJ- or QPI-ABR-201 Module	
Data Highway Plus	Use QPJ- or QPI-ABD-201 Module		
Aromat	FP1 (MEWNET)	25 pin to 9 pin RS-232	HMI-CAB-C111
ASCII Single Drop	Customer micro controller or computer	Requires custom cable. Some applications can use C52 or C53	
B & R	Mininet	2-plated wires RS-422	HMI-CAB-C98
Flex	Customer micro controller, computer, motion controller, scale, etc.	Requires custom cable. Some applications can use C52 or C53	
General Electric	SNP 90/30, 90/70 CMM Module SNP, SNPX	Program Port, 15 pin RS-422 25 pin RS-232	HMI-CAB-C82 HMI-CAB-C53
	GE GENIUS 90/30, 90/70, SERIES 6, SERIES 5	25 pin RS-422 Use QPJ- or QPI-GEG-201 Module	HMI-CAB-C93
Hitachi	H Series S10 Series	15 pin male 25 pin male to 4 wire	HMI-CAB-115
IDEC	Micro-1, FA via link adapter	25 pin RS-232	HMI-CAB-C53
	Micro 3	25 pin to 9 pin RS-232	HMI-CAB-C109
Keyence	KV-L2 Port 1	25 pin RS-232	HMI-CAB-C53
	KV-L2, KV-10R Program Port	RJ11 Handset Connector RS232	HMI-CAB-C112
Koyo	NA	see PLC Direct	NA
Mitsubishi	Series A1S	9 pin RS-232, for A1SJ71C24-R2	HMI-CAB-C88
	Series A Computer Interface	25 pin RS-232	HMI-CAB-C53
	Series A Program Port	25 pin RS-422	HMI-CAB-C91
	FX	25 pin RS-422	HMI-CAB-C91
	FX0	25 pin RS-422 via an adapter	HMI-CAB-C91

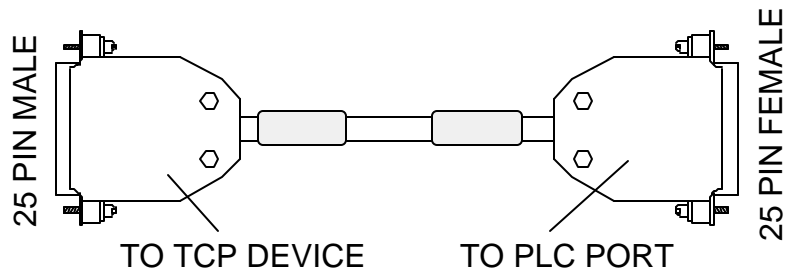
QUICKPANEL COMMUNICATIONS

PLC Communication Guide Con't

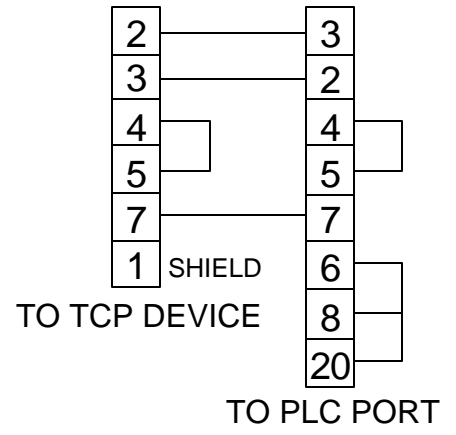
PLC Manufacturer	PLC Type	Description	Catalog Number
Modicon	984 A, B, X	25 pin RS-232	HMI-CAB-C53
	984 Slot and compact	9 pin RS-232	HMI-CAB-C58
	984 Micro	RJ45 headset connector RS-232	HMI-CAB-C102
	MODBUS Plus	Use QPJ- or QPI-MBP-201 Module	
	MODBUS Slave	Requires custom cable. Some applications can use C52 or C53	
Omron	C200H	25 pin RS-232	HMI-CAB-C53
	C20H, CQM1,	9 pin RS-422 9 pin RS-232	HMI-CAB-C108 HMI-CAB-C67
PLC Direct	DL430, 440 port 2, D4-DCM	25 pin RS-232	HMI-CAB-C53
	DL330, 330P with use of D3-232-DCU	25 pin RS-232	HMI-CAB-C53
	DL340, DL305	RJ11 handset connector RS-232	HMI-CAB-C103
	DL230, 240	RJ12 handset connector RS-232	HMI-CAB-C86
Reliance	Automate program port, R-net gateway	25 pin RS-232	HMI-CAB-C53
SATTCON	05-35	25 pin RS-232	HMI-CAB-C89
Siemens	S5 family program port	15 pin current loop	HMI-CAB-C76
	3964R 928B TTY Sub Module	25 pin Male Current Loop	HMI-CAB-C104
	3964R 928B RS232 Sub Module	25 pin RS-232	HMI-CAB-C53
	S7-200 PPI	9 pin RS-422	HMI-CAB-C110
Simatic TI	305 with use a RS-232 DCU	25 pin RS-232	HMI-CAB-C53
	405	25 pin RS-232	HMI-CAB-C53
	500 series, 25 pin program port	25 pin RS-232	HMI-CAB-C53
	500 series 9 pin program port	9 pin RS-232	HMI-CAB-C101
	500 series 9 pin male RS-422	9 pin RS-422	HMI-CAB-C92
	TI545-1102, 9 pin female RS-422	9 pin RS-422	HMI-CAB-C100
Square D	Symax model 100 and greater	9 pin RS-422	HMI-CAB-C94
	Symax model 50 via link adapter	25 pin RS-232	HMI-CAB-C53
Telemecanique	Unitelway	25 pin male to 8 pin mini din	HMI-CAB-116
Toshiba	MX, EX	4 plated wires RS-422	HMI-CAB-C96
	T2	15 pin RS-422	HMI-CAB-C97
Toyopuc	PC1	3 plated wires RS-422	HMI-CAB-C113
	PC2F	4 spade lugs RS-422	HMI-CAB-C114
Uni-Telway	Uni-Telway Network	25 pin to 8 pin male Mini-DIN	HMI-CAB-C116

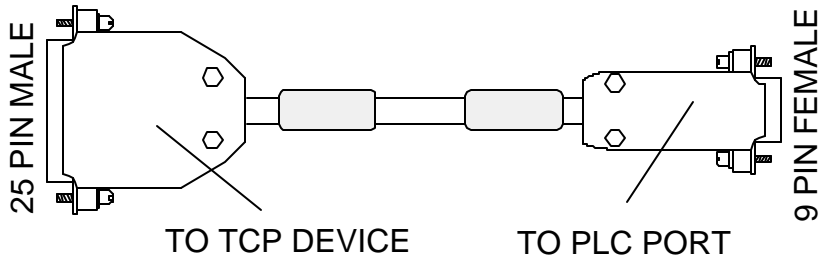
Cable Diagrams	Type
HMI-CAB-C51 (Allen Bradley PLC-5, KF2 Module, 25 Pin RS-232)	PDF
HMI-CAB-C52 (Allen Bradley Channel 0, 9 Pin, RS-232)	PDF
HMI-CAB-C53/A (Allen Bradley, PLC-5, Channel 0, 25 Pin, RS-232)	PDF
HMI-CAB-C55 (Allen Bradley PLC-5 KE Module)	PDF
HMI-CAB-C58 (Modicon 984 Slot, 9 Pin RS-232)	PDF
HMI-CAB-C67 (Omron c20H, CQM, RS-232)	PDF
HMI-CAB-C82 (GE SNP 90/30, 90/70, Program Port RS-422)	PDF
HMI-CAB-C83/A (Allen Bradley SCL 500, SLC 5/01, SLC 5/02, SLC 5/03 DH-465 Program Port)	PDF
HMI-CAB-C84/A (Allen Bradley SCL 500, SLC 5/01, SLC 5/02, SLC 5/03 DH-485 Program Port)	PDF
HMI-CAB-C86 (PCL Direct DL250 Port, 6-pin Modular Phone RS-232)	PDF
HMI-CAB-C88 (Mitsubishi Series A1S, 9 Pin, RS-232 for A1SJ71C24-R2)	PDF
HMI-CAB-C90 (PLC-2, RS-422)	PDF
HMI-CAB-C91 (Mitsubishi, Series A Program Port, FX, FX0, RS-422)	PDF
HMI-CAB-C92 (Simatic TI 500 Series RS-422)	PDF
HMI-CAB-C93 (GE CMM Module SNP, RS-422)	PDF
HMI-CAB-C94 (Square "D, Symax Model 100 RS-422)	PDF
HMI-CAB-C96 (Toshiba MX, EX, RS-422)	PDF
HMI-CAB-C97 (Toshiba, T2 RS-422)	PDF

HMI-CAB-C98 (B & R, Mininet RS-422)	PDF
HMI-CAB-C99 (QP Printer Cable)	PDF
HMI-CAB-C100 (Simatic TI, TI-545-1102, RS-422)	PDF
HMI-CAB-C101 (Simatic TI 500 Series, 9 pin Program Port)	PDF
HMI-CAB-102/A (Modicon 984 Micro, RS-232 to RJ-45)	PDF
HMI-CAB-C103/A (PLC Direct, DL230, 240, RS-232)	PDF
HMI-CAB-C106 (Allen Bradley Micrologix Program Port, RS-232)	PDF
HMI-CAB-C107 (Allen Bradley PLC-5, Channel 0, RS-422)	PDF
HMI-CAB-C108 (Omron C200H RS-422)	PDF
HMI-CAB-C109 (IDEC Micro 3 RS-232)	PDF
HMI-CAB-C110 (Siemens S7-200 PPI, RS-422)	PDF
HMI-CAB-C111 (Aromat FP1 (MEWNET) RS-232)	PDF
HMI-CAB-C112 (Keyence KV-L2, KV10R Program Port RS-232)	PDF
HMI-CAB-C113 (Toyopuc PC1, RS-422)	PDF
HMI-CAB-C114 (Toyopuc PC2F, RS-422)	PDF
HMI-CAB-C115 (Hitachi S Serial RS 422)	PDF
HMI-CAB-C116 (Uni-Teleway TSX37 Series)	PDF
HMI-CAB-C117 (Allen-Bradley AIC+, DH485 Port 3)	PDF

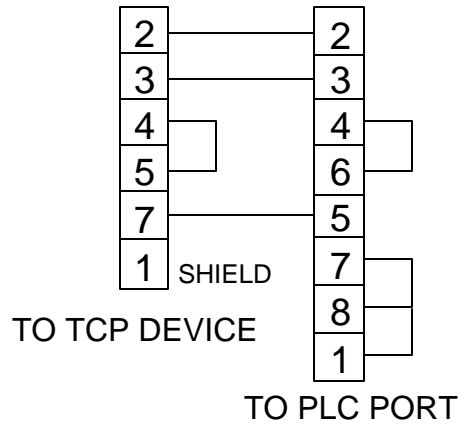


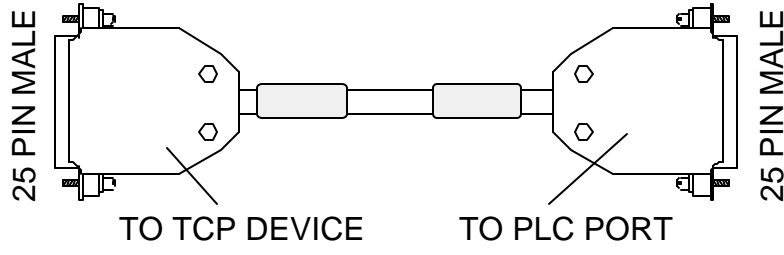
HMI-CAB-C51



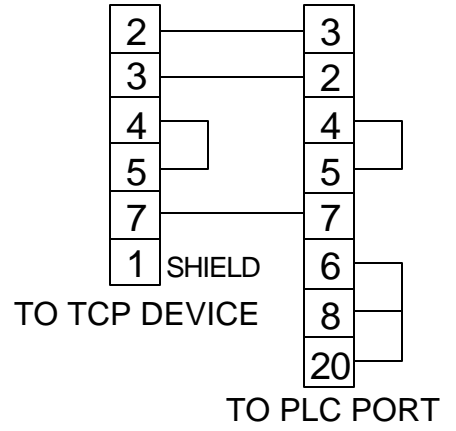


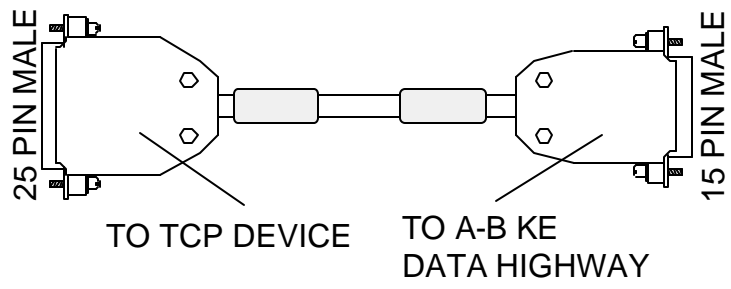
HMI-CAB-C52



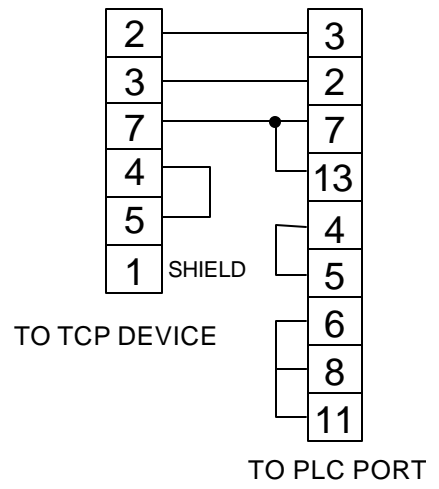


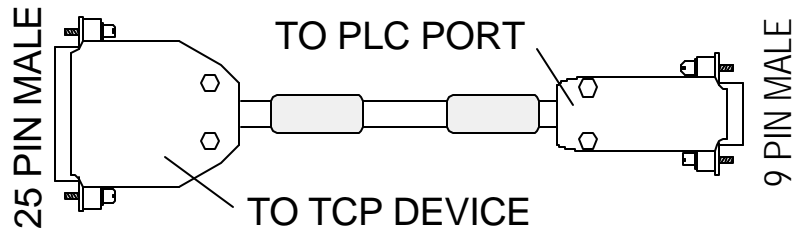
HMI-CAB-C53/A



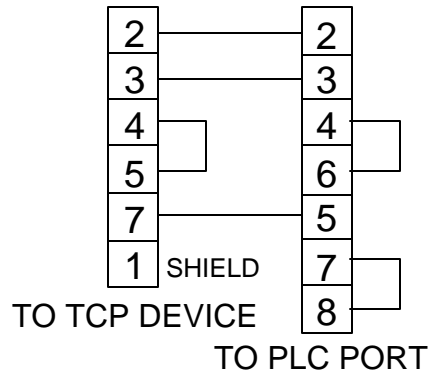


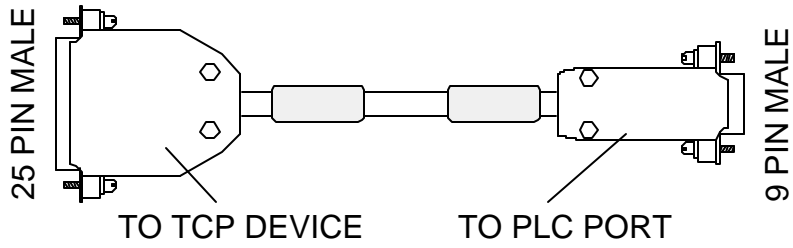
HMI-CAB-C55



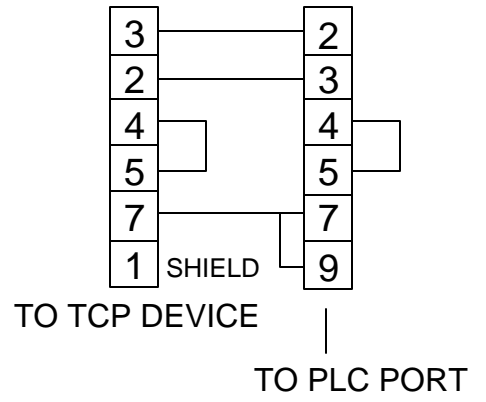


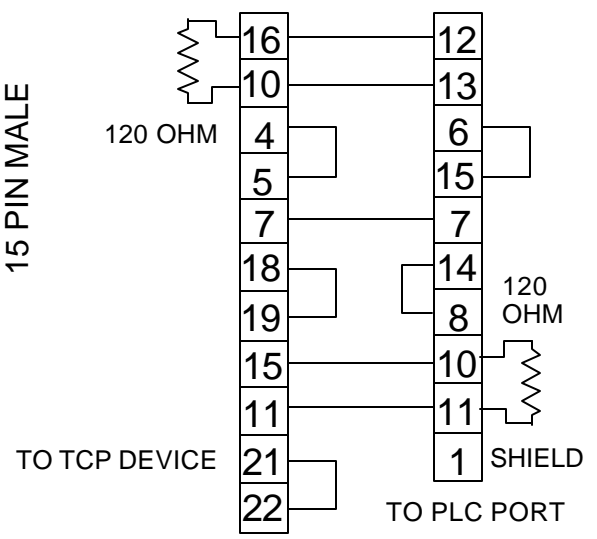
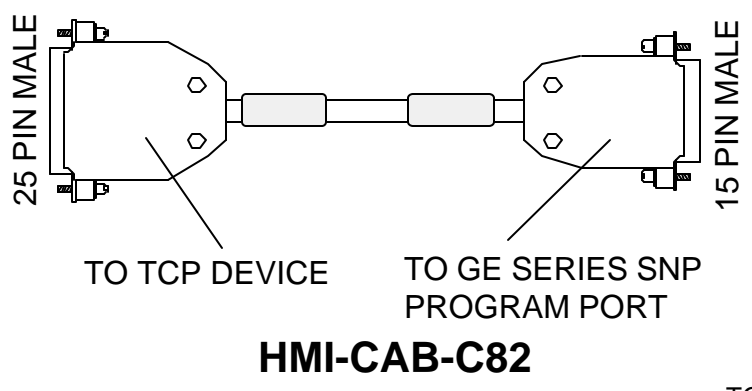
HMI-CAB-C58



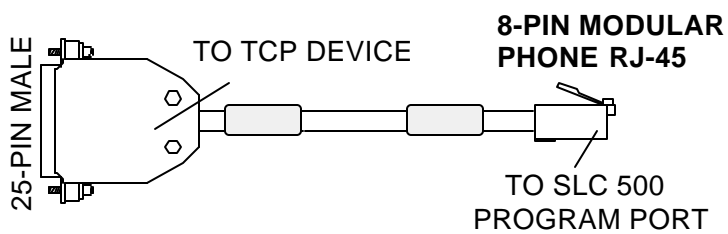


HMI-CAB-C67

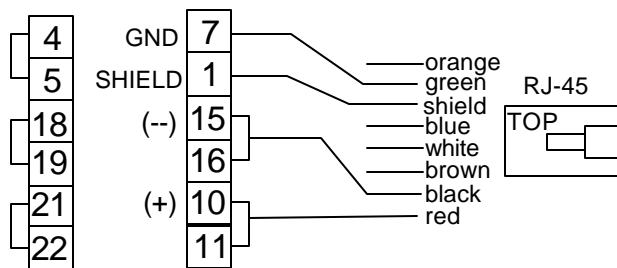




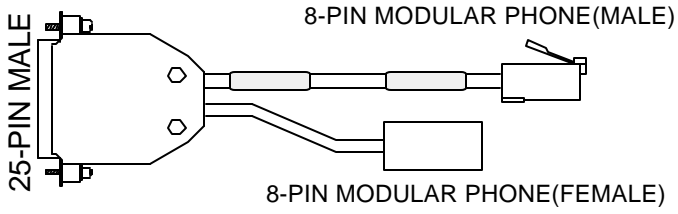
NOTE: The HMI-CAB-C83/A Cable drawing is proprietary information and is provided for reference *ONLY*. You are not authorized to construct this cable.



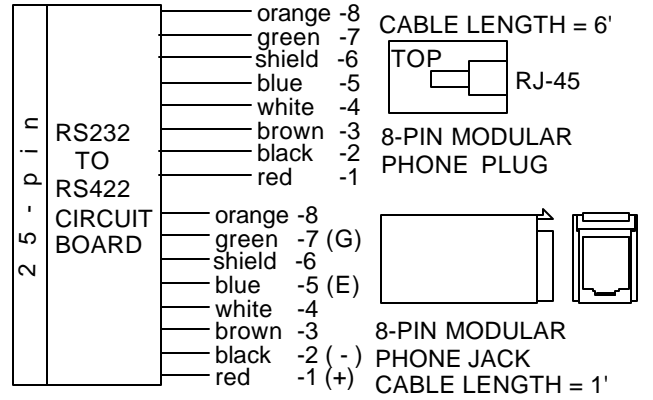
HMI-CAB-C83/A



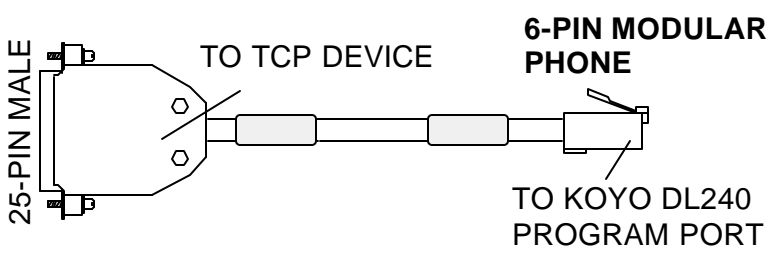
NOTE: The HMI-CAB-C84/A Cable drawing is proprietary information and is provided for reference *ONLY*. The RS232 to RS422 circuit board is contained in the 25-pin D-shell. The circuit also provides network control. The cable is licensed from Allen-Bradley and cannot be modified.



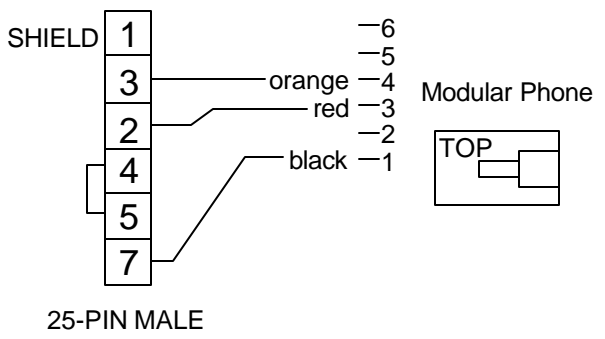
HMI-CAB-C84/A

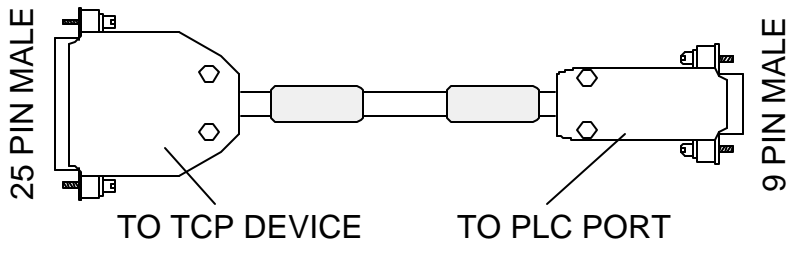


m a l e

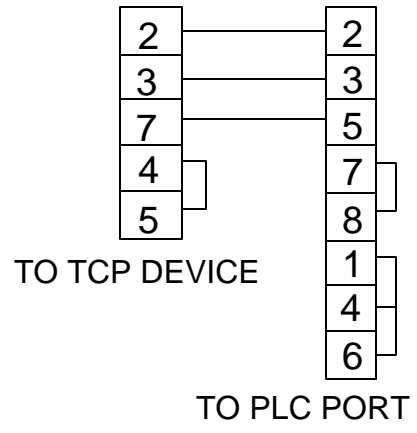


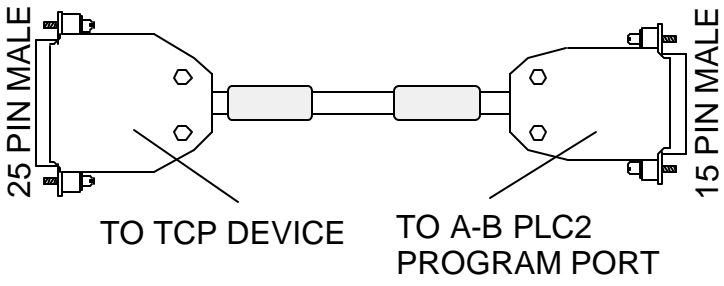
HMI-CAB-C86/B



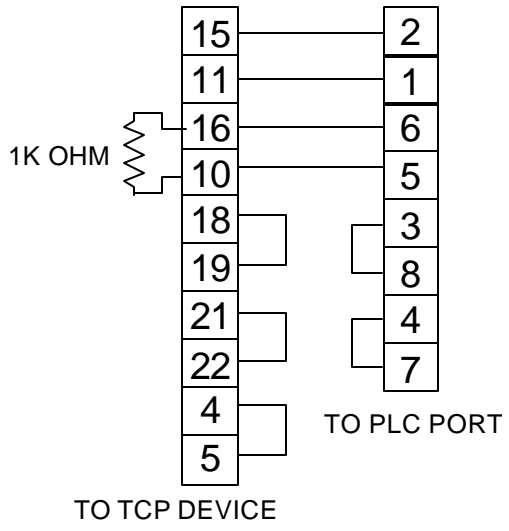


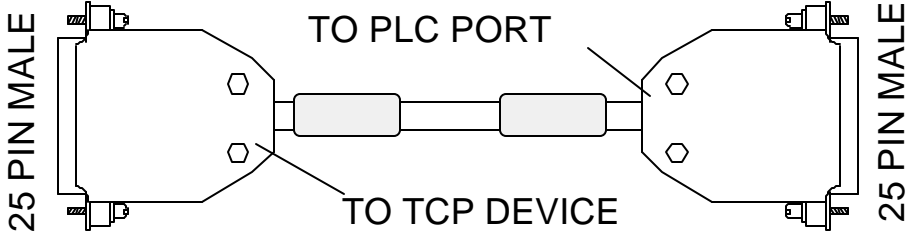
HMI-CAB-C88



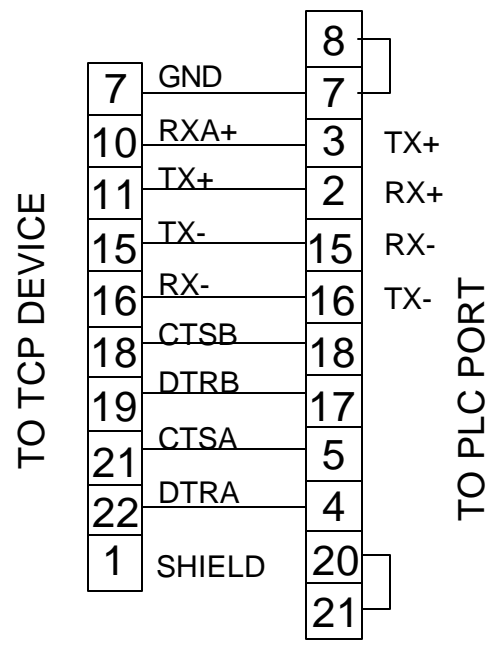


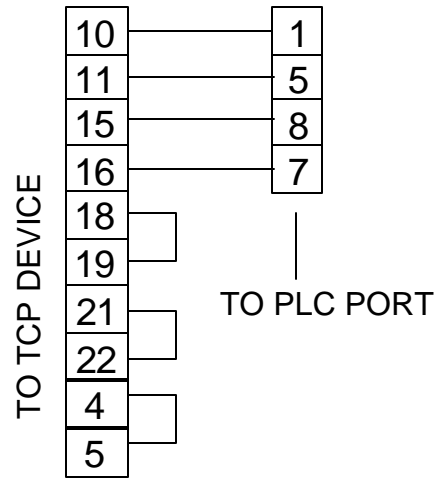
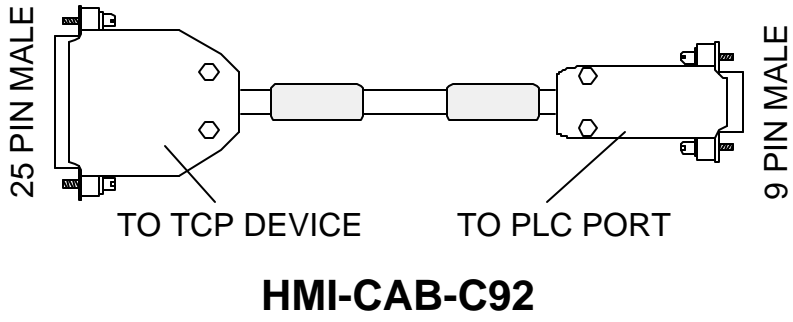
HMI-CAB-C90

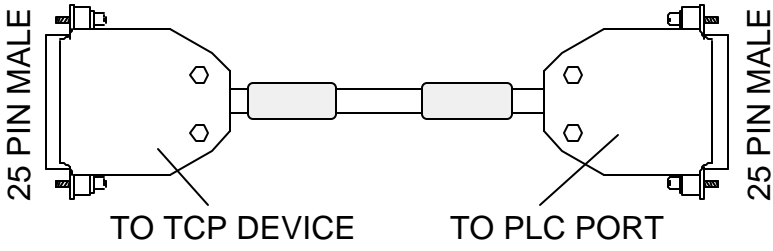




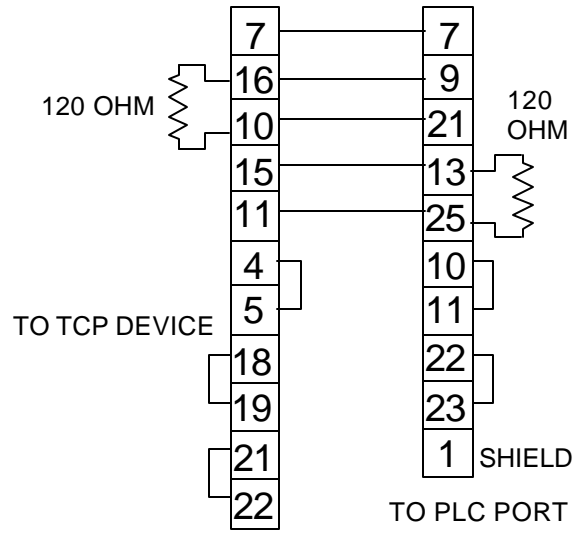
HMI-CAB-C91/B

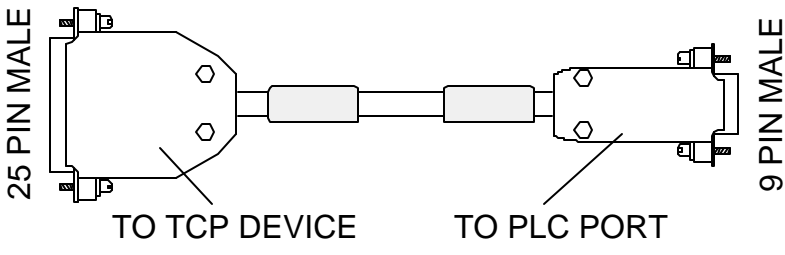






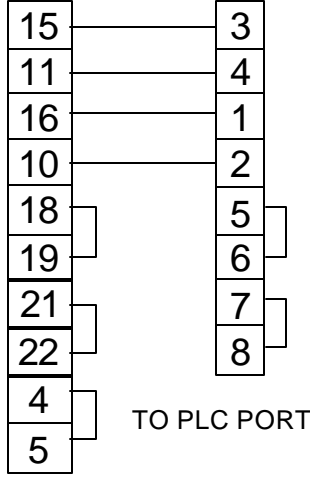
HMI-CAB-C93

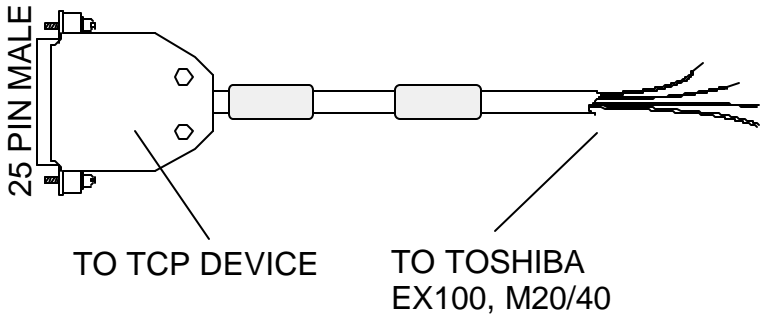




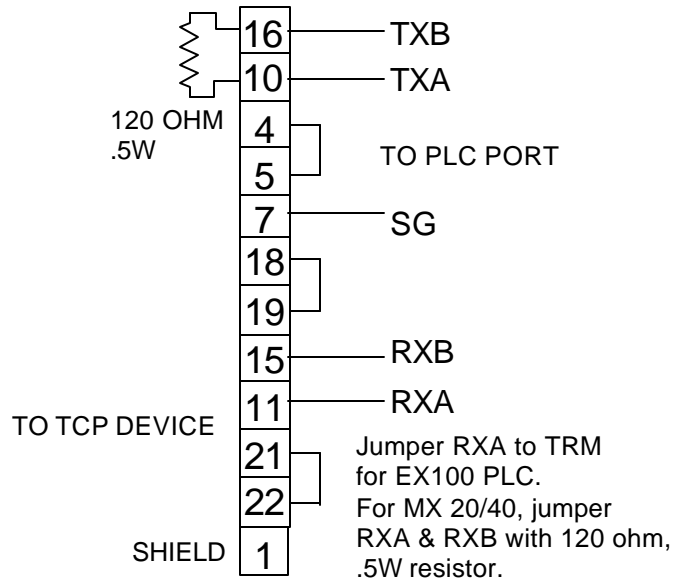
HMI-CAB-C94

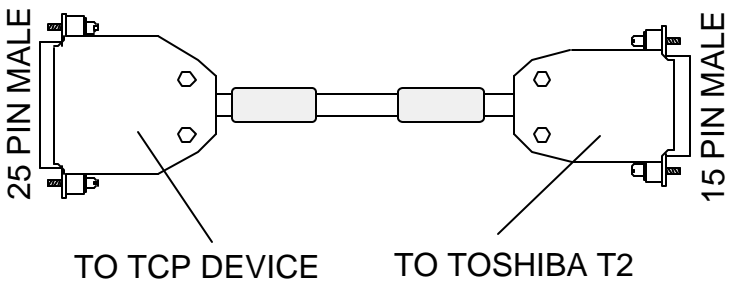
TO TCP DEVICE



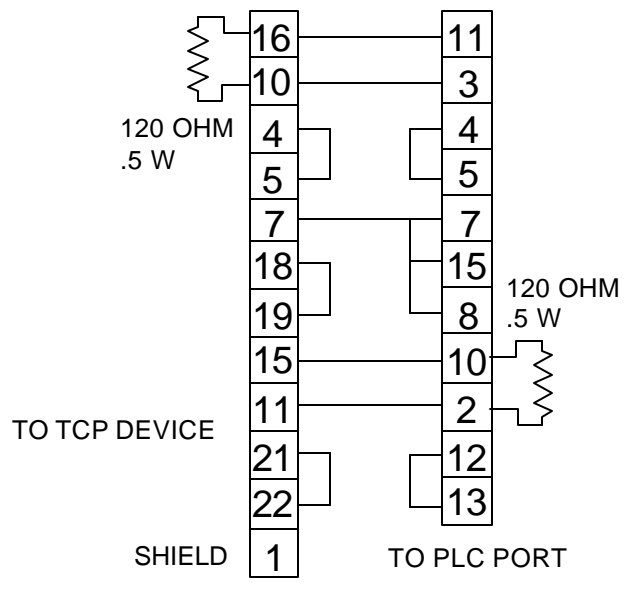


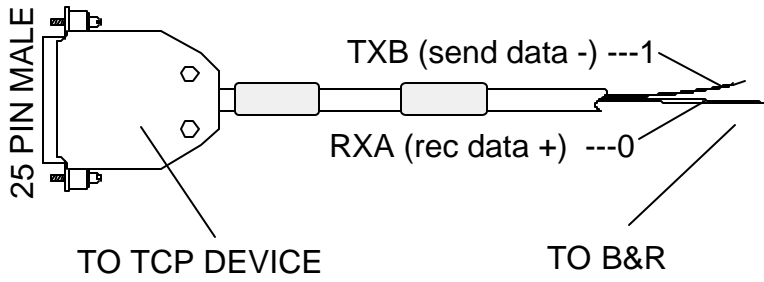
HMI-CAB-C96



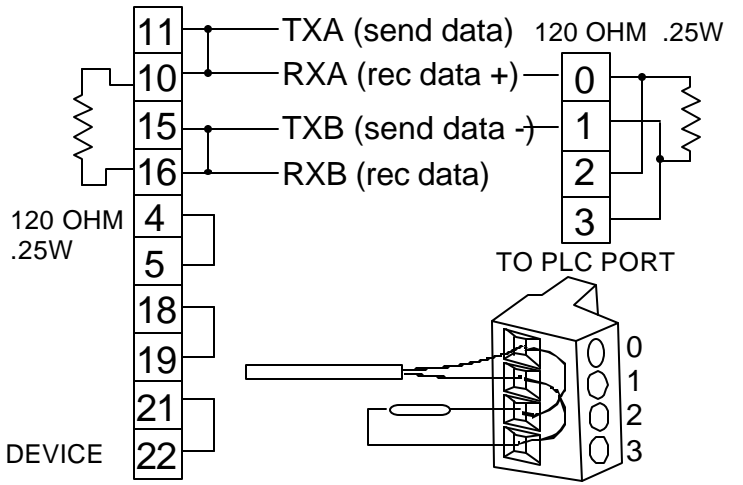


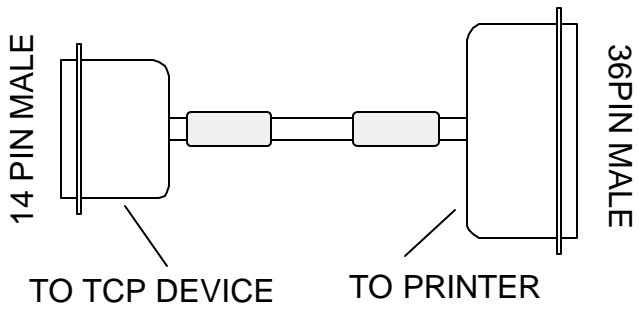
HMI-CAB-C97





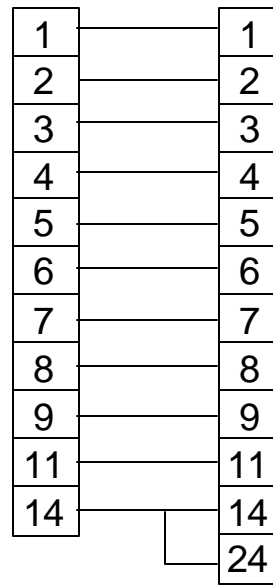
HMI-CAB-C98



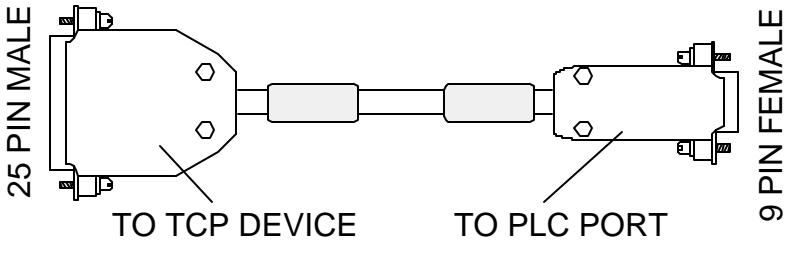


HMI-CAB-C99

TO PRINTER PORT

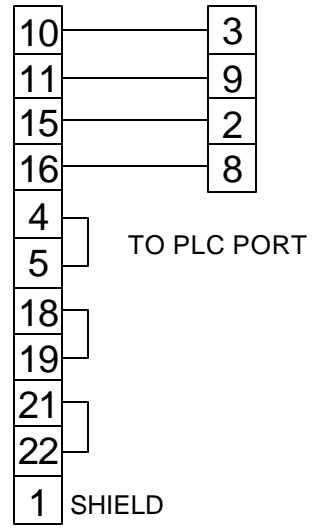


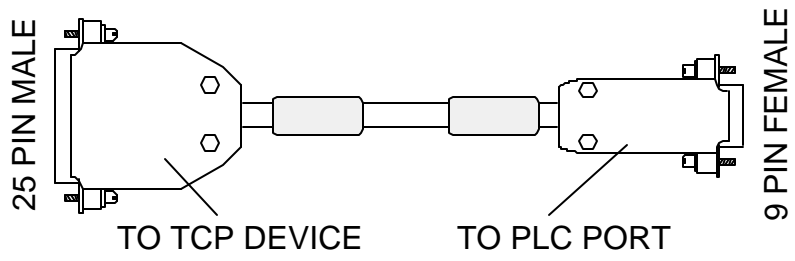
TO PRINTER



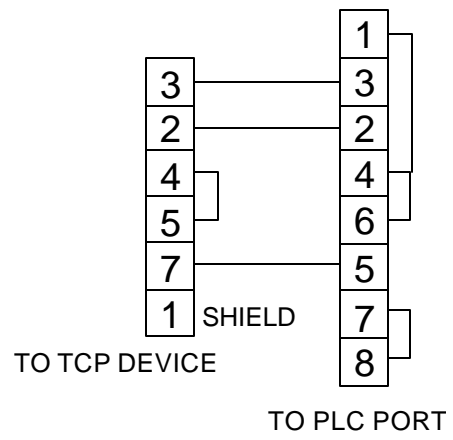
HMI-CAB-C100

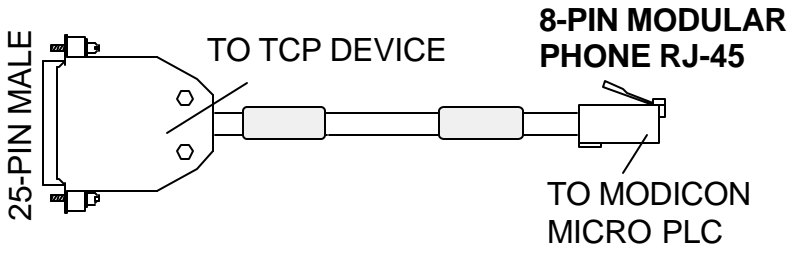
TO TCP DEVICE



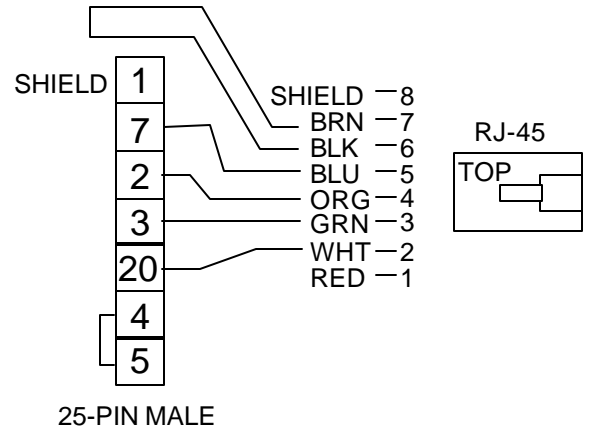


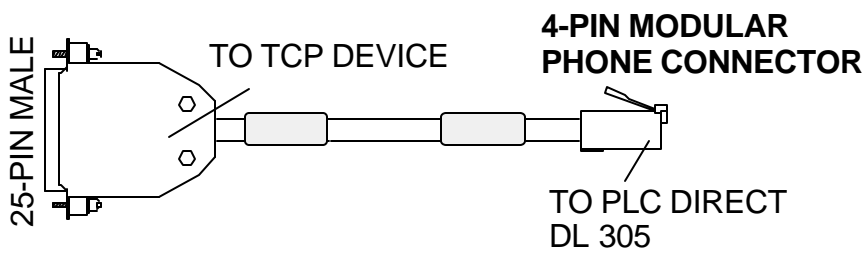
HMI-CAB-C101



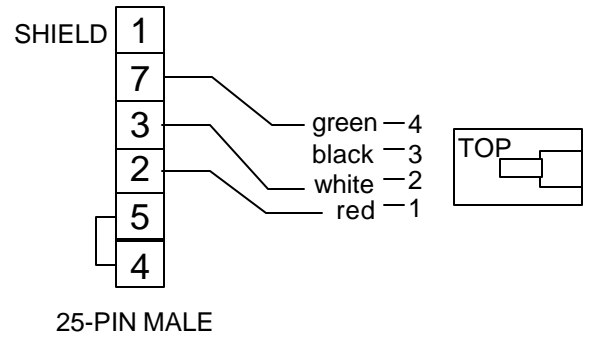


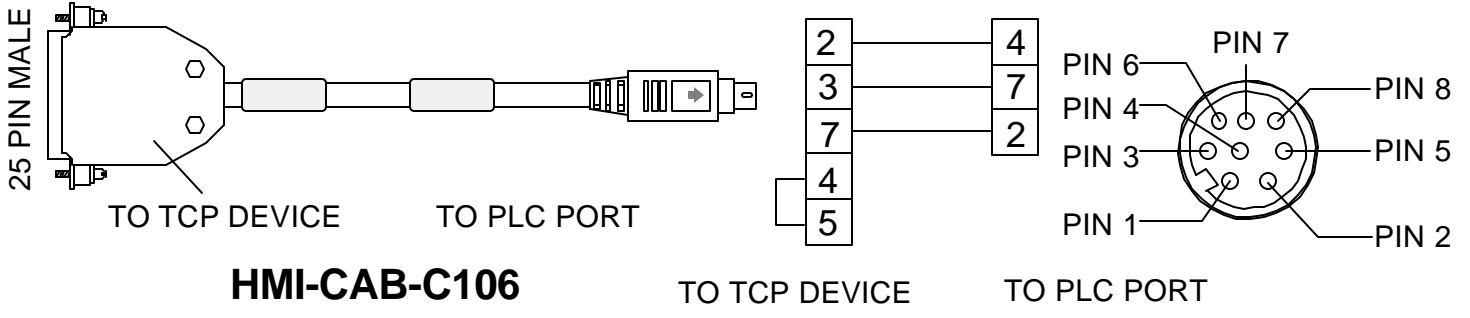
HMI-CAB-C102/A

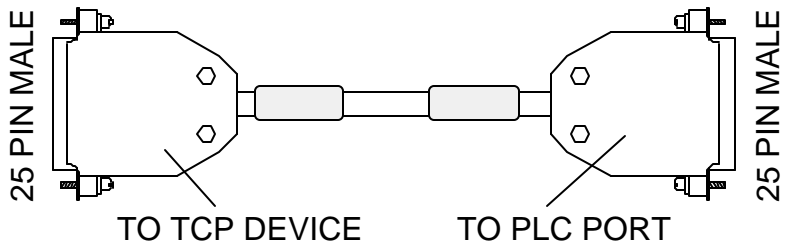




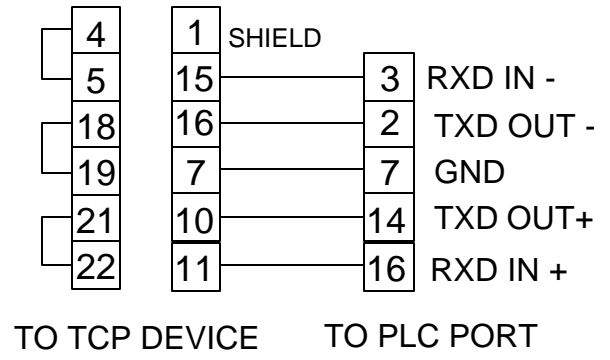
HMI-CAB-C103/A

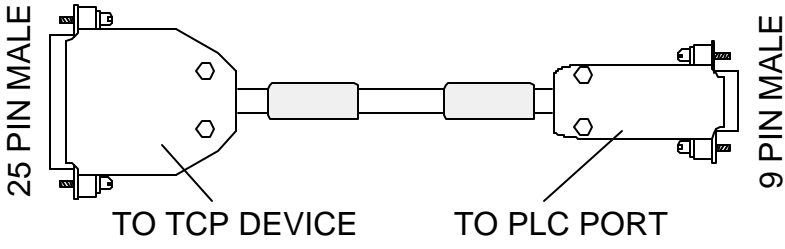






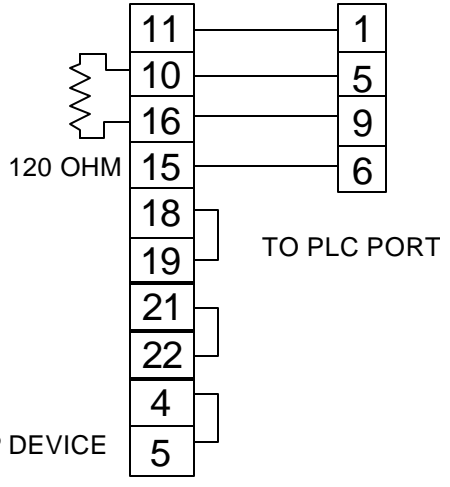
HMI-CAB-C107/A

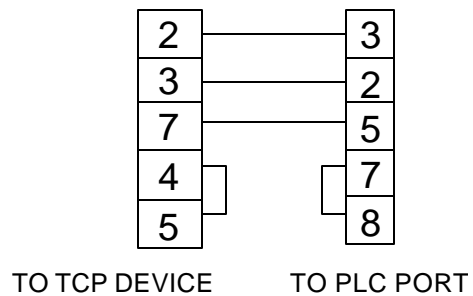
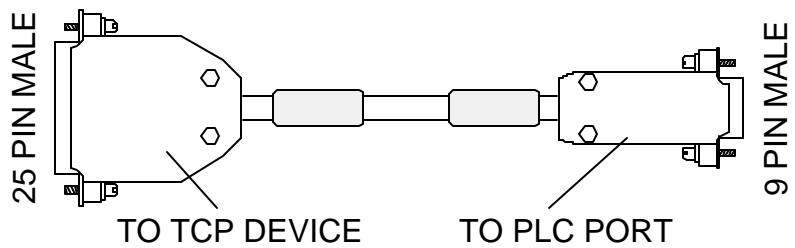




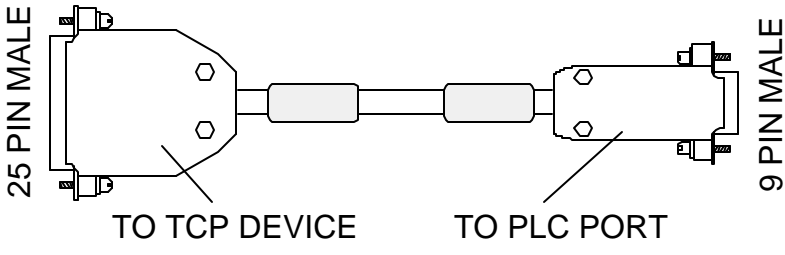
HMI-CAB-C108

TO TCP DEVICE



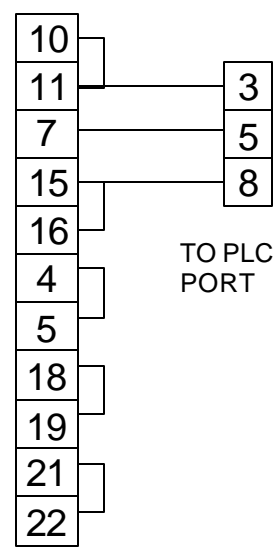


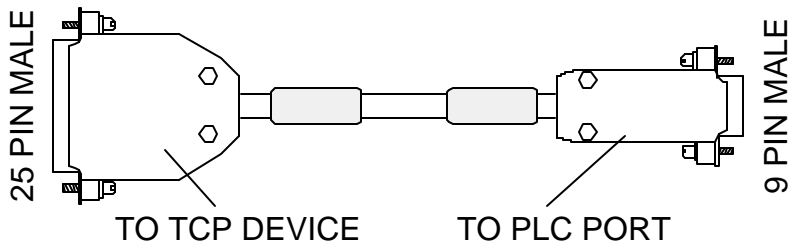
HMI-CAB-C109



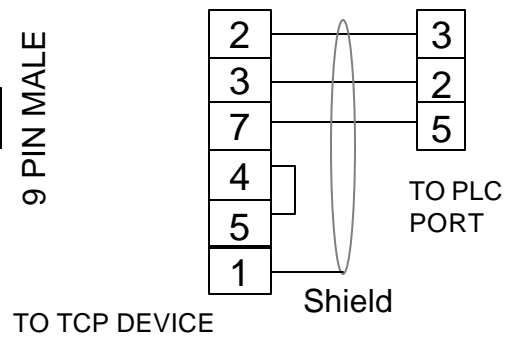
HMI-CAB-C110

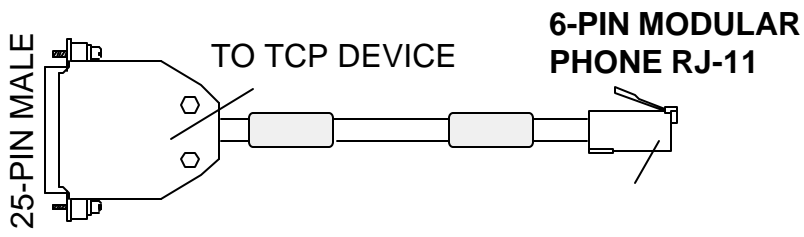
TO TCP DEVICE



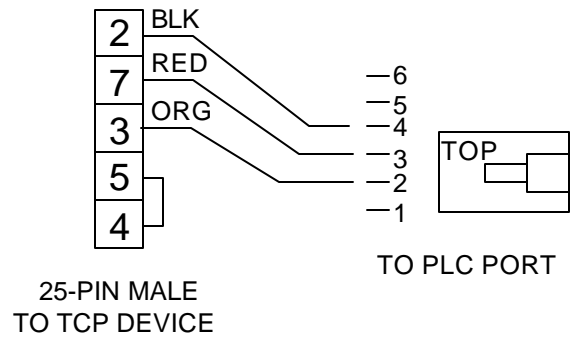


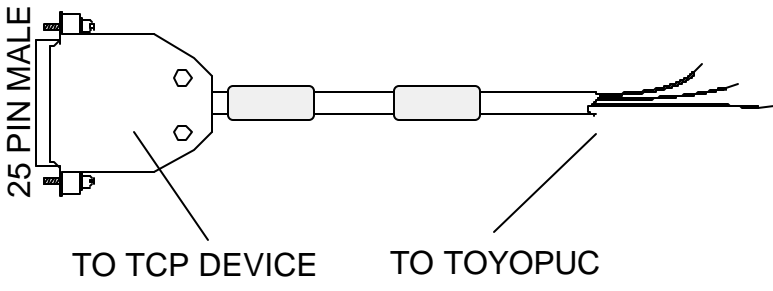
HMI-CAB-C111





HMI-CAB-C112



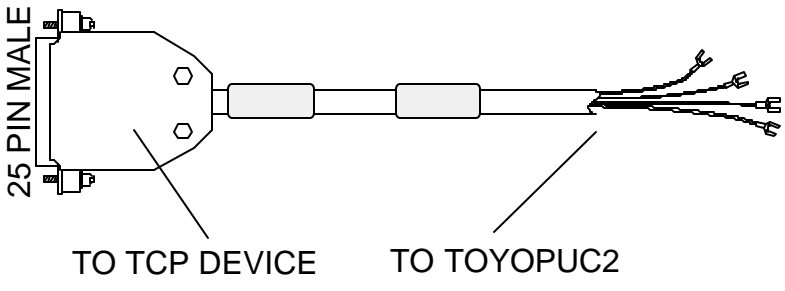


HMI-CAB-C113

TO TCP DEVICE

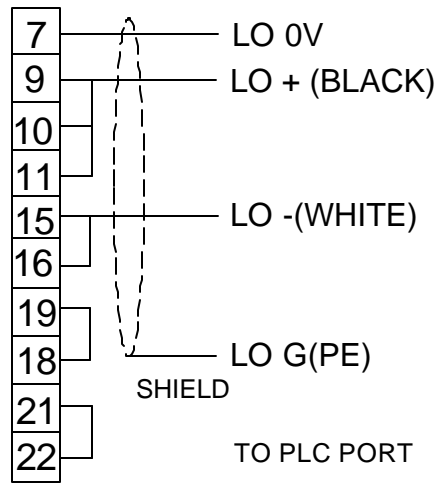
SHIELD

16	TXB	}	(L1) -
15	RXB		
10	TXA	}	(L1) +
11	RXA		
7	GND		0V
18		}	TO PLC PORT
19			
4		}	
5			
21		}	
22			
1			

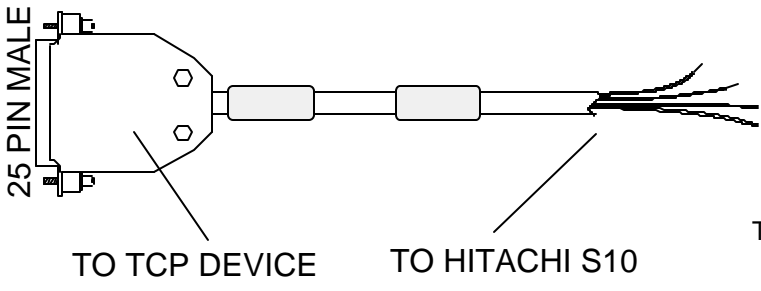


HMI-CAB-C114

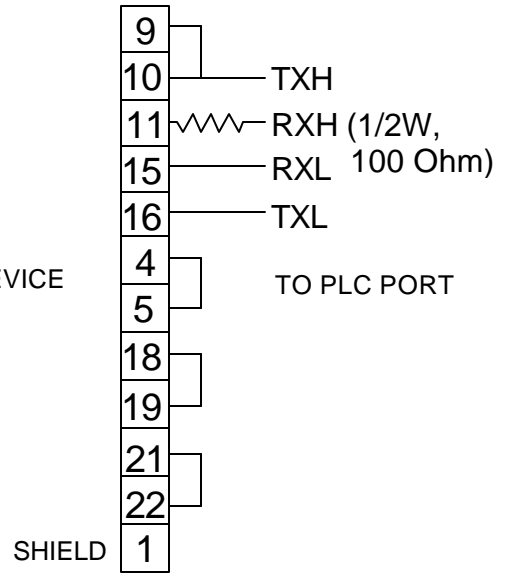
TO TCP DEVICE

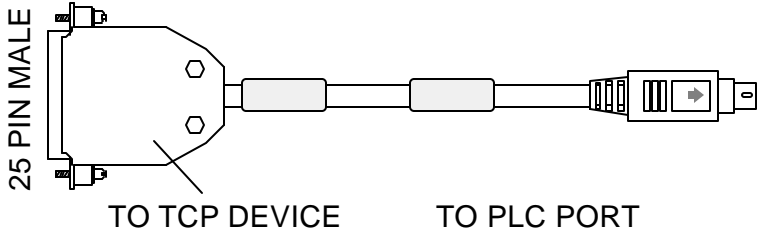


- 7 — LO 0V
- 9 — LO + (BLACK)
- 10 — LO + (BLACK)
- 11 — LO + (BLACK)
- 15 — LO -(WHITE)
- 16 — LO -(WHITE)
- 19 — LO G(PE)
- 18 — LO G(PE)
- 21 — SHIELD
- 22 — TO PLC PORT

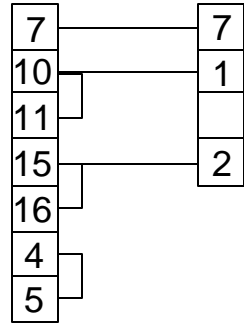


HMI-CAB-C115



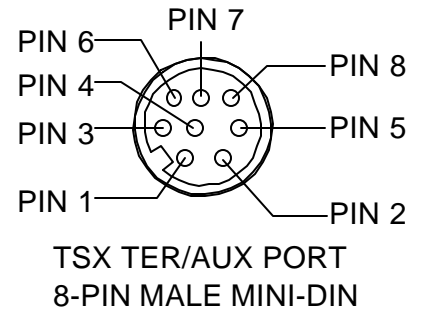


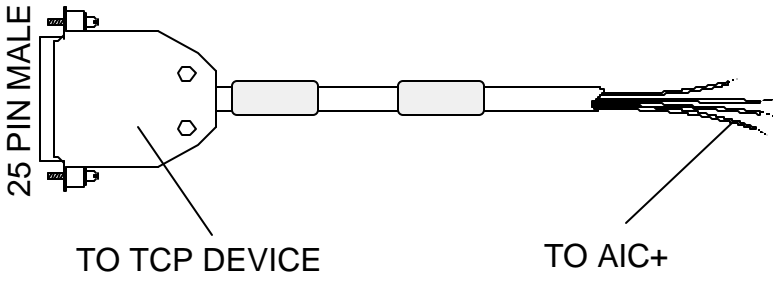
HMI-CAB-C116



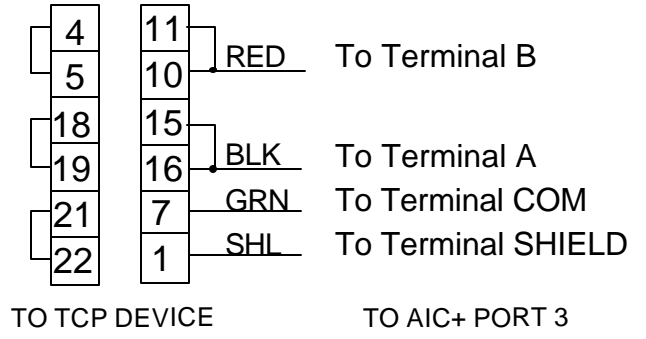
TO TCP DEVICE

TO PLC PORT





HMI-CAB-C117





QuickPanel 6" TFT High Performance QuickPanel

Total Control, the leader in operator interface products, has improved one of its outstanding operator interface products. Total Control introduces the new 6" TFT (Active Matrix) Quickpanel!

Features:

- High Bright TFT Display
- 3 Times Faster than 6" STN and Monochrome models
- 64 Colors (RGB-4 Levels)
- 2MB of Memory
- NEMA 4X/12, UL Class I/Div 2, CE, IP65F

Model Number	Description
QPK-3D200-C2P	6" TFT Color LCD, 24 VCD
QSK-3D200-C2P	6" TFT Color LCD, Quick Start Kit

High Bright TFT Display

The new 6" TFT QuickPanel appears much brighter than other LCD display technologies. Clear text and bright colors make the new display stand out on any panel.

Faster Screen Updates

A faster clock in the processor provides the QuickPanel with faster screen draws than before.

64 Colors

Now you have 8 times more colors than before! A full range of colors to enhance the bright display. Can also import 256 color bitmaps.

2 MB of Memory

More than twice the memory than previous models to give you more room for critical applications.

Agency Approvals

This unit comes with all the necessary industrial safety and performance approvals including UL508, UL1604 Class I/Div2, CAN/CSA-C22.2, Nos. 142 and 213-M1987.

QuickPanel Cable Part Numbers

The serial interface port connects the QUICKPANEL to your PLC. If you need a cable part number, please check the [Cable Part Number List](#).

[QuickDesigner Software](#)



QuickDesigner is a friendly Windows-based graphical editor common to all QuickPanel models. QuickDesigner offers a comprehensive set of panel operators including push-buttons, selector switches, pilot lights, text and numeric data displays, bar-graph displays, static and dynamic bit-mapped or object-oriented images, and more. Each of these functions as naturally as its discrete counterpart; push buttons toggle on and off at a touch, pilot lights glow to indicate active status, etc. Despite its impressive array of features, QuickDesigner is very easy to use. We promise you'll be configuring application screens within 10 minutes, or we'll give your money back.

[Go to the QuickPanel 6" TFT Specifications Page](#)

[| Privacy Policy](#) | [Copyright Information](#) |

QuickPanel 6" TFT High Performance QuickPanel



Specifications 6 " QuickPanel TFT

Electrical

Rated Power Supply	DC 24V+ 15%
Power Consumption	20W or less (Typ: 13W)
Allowable Pause Duration	2ms or less
Voltage Endurance	AC1000V - 10mA 1minute (between charging and FG terminals)
Insulation Resistance	DC500V - greater than 10M.... (between charging and FG terminals)

Structural

External Dimensions (mm)	170.5mm (W) x 138mm (H) x 57mm (D) (Main unit only)
Weight	950g or less (Main unit only)
Cooling Method	Natural air circulation

Environmental

Ambient Operating Temp	0° C to 40° C
-------------------------------	---------------

Ambient Storage Temp	-10° C to 60° C
Operating Humidity	20%RH to 85%RH (non-condensation)
Vibration Endurance	10Hz to 25Hz applied in X, Y, and Z directions for 30 minutes each - 19.6m/s ²
Noise Immunity (via noise simulator)	Noise voltage: 1000 Vp-p Pulse length: 1 µs Arise time: 1 ns
Electrostatic Discharge immunity	TC11: 4kv (meets IEC 61000-4-2) TC41: 6kv (meets EN 61000-4-2)
Operating Atmosphere	Must be free of corrosive gasses
Grounding	100 Ohm or less grounding resistance
Dust	Under 0.1mg/m ³ (Non-conductive levels)
Rating	Nema 4x/12, Equivalent to IP65f

Display Features

Display Medium	TFT type color LCD
Display Color	64 colors (RGB-4 levels)
Backlight	CCFL (lifespan = more than 50,000 hours, when continuously lit)
Resolution	320 x 240pixels
Display Area	115.2mm (W) x 86.4mm (H)
Brightness	4 levels (via touch panel)
Character Sets	ANK : 158 types, Kanji : 6962 types (including 607 non-kanji characters)
Character Size	Both height and width can be expanded 1, 2, 4, or 8 times. Single byte characters larger than 2 times size (32 x 32) can be displayed in a high quality font.

Screen Memory

Application	FLASH EPROM 2M bytes (approx. 80-120 typical screens)
Data Backup	SRAM 96K bytes Backup Memory uses lithium batteries.

Touch Panel / Clock Accuracy

Touch Panel	16 x 12 keys/ screen (1 or 2 point touch)
Clock Accuracy	+/- 65 seconds/ month (at room temperature)

[Go to the QuickPanel 6" TFT
Product Description Site](#)

QuickPanel Cable Part Numbers

The serial interface port connects the QUICKPANEL to your PLC. If you are looking for a cable part number, please check the [Cable Part Number List](#).

| [Privacy Policy](#) | [Copyright Information](#) |

7.5" QuickPanel Data Sheet

The 7.5" TFT QuickPanel display is the newest member to the QuickPanel product family. It comes equipped with all the hardware features you need to provide a state-of-the-art operator solution. QuickPanel...The clear choice for any PLC!



- **New! Ethernet Port**

A 10Base-T ethernet port allows you to connect the QuickPanel to your network for communications to your PLC and for faster application downloads.

- **New! Compact Flash Card**

Need to send a new application to your customer, or maybe just have a small change to your application? The compact flash card allows you to transfer your application to and from your QuickPanel quickly and easily.

- **New! Twice The Memory**

The 7.5" unit comes standard with 4 Mbytes of flash EPROM, which makes it the perfect solution for any size application.

- **Backlight Burnout Detection**

If the QuickPanel's backlight ever burns out, it will be automatically detected. At that time the status LED will turn orange and the touch screen will be disabled. You can also configure the QuickPanel to set a bit in the PLC.

- **Low Power Consumption**

When it comes to power consumption, the 7.5" QuickPanel consumes a mere 28 watts of power. Coupled with its wide input voltage specification, this unit is ideal for applications powered by a battery.

- **Bright TFT Display Not STN**

This unit features a bright 64-color TFT display with a 640x480 pixel resolution. This combination provides the user a bright, sharp display of images over a wide viewing angle with no color shift.

- **Ratings and Approvals**

The industrially designed QuickPanel is rated for NEMA 4X/12. Agency approvals include Class 1 Division 2, UL, CUL, and CE to meet the demands of harsh industrial environments.

- **Compact Design**

The compact design of the 7.5" QuickPanel means it takes up less panel space. This design makes the QuickPanel the ideal choice for applications requiring a flat panel operator interface.

- **Ideal Panel Operator Replacer**

QuickPanel can replace various input/output devices such as push-buttons, pilot lights, ASCII display, alarming, and numeric entry and display. QuickPanel supports both static and dynamic bitmap graphics, which can enhance your application through information-rich pictures

- **Battery-Backed Real Time Clock**

The battery-backed real time clock is available for up-to-the-second time display as well as alarm stamping.

7.5" QuickPanel Price

Catalog Number	Description
QPGCTDE0000	7.5" TFT Color TCP QuickPanel with Ethernet, 24 VDC
HMI-KPN-401	Numeric and Function Keypad (for 7.5" Only)
HMI-CCT-402	Replacement Cold Cathode Backlight Tube for 7.5" QuickPanel

QuickDesigner Software

Catalog Number	Description
QDA-EDT-001	QuickDesigner Advanced Software
QDA-UPD-001	QuickDesigner Advanced Software Upgrade

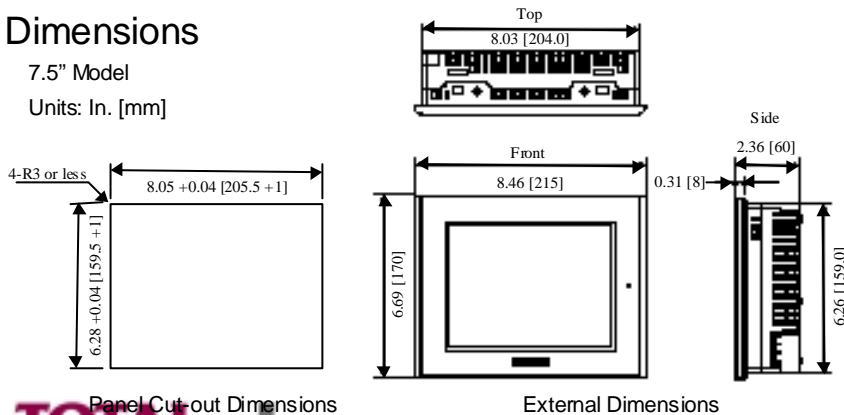
7.5" QuickPanel Specifications

Screen Type	7.5" diagonal TFT Color LCD
Pixel Resolution	640 W x 480 H
Display Area	5.9" (W) x 4.4"(H)
Touch Panel	Resistive Film (12 x 8 cells)
Colors	64 Colors (256 Colors in 1Q-2002)
Backlight	User Replaceable (Service life: 50,000 hrs @ 25° C and 24 hr. operation)
Memory	4 MB, Flash EPROM
Ratings	NEMA 4X/12
Approvals	CUL, CE, UL Class 1 Div 2
Operating Temp.	0°C to 50° C
Input Voltage	19.2 VDC to 28.8 VDC
Power Consumption	28 Watts or less
Weight	5.5 lbs.

Dimensions

7.5" Model

Units: In. [mm]



TOTAL CONTROL ■
A Subsidiary of GE Fanuc ■

Total Control Products, Inc

Automation Information Centers
 USA and Canada 1-800-648-2001
 Europe and Middle East (352) 727979-1
 Asia Pacific 65-566-4918
 Latin America (610) 437-7932
 Mexico 1-800-989-1244
www.total-control.com

Prices shown represent US dollars.

10.5" & 12.1" QuickPanel Data Sheet

The 10.5" and 12.1" TFT QuickPanel display are the newest members to the QuickPanel product family. They come equipped with all the hardware features you need to provide a state-of-the-art operator solution. QuickPanel...The clear choice for any PLC!



- **New! Ethernet Port**

A 10Base-T ethernet port allows you to connect the QuickPanel to your network for communications to your PLC and for faster application downloads.

- **New! Compact Flash Card**

Need to send a new application to your customer, or maybe just have a small change to your application? The compact flash card allows you to transfer your application to and from your QuickPanel quickly and easily.

- **New! Twice The Memory**

These units come standard with 4 Mbytes of flash EPROM, which makes it the perfect solution for any size application.

- **Backlight Burnout Detection**

If the QuickPanel's backlight ever burns out, it will be automatically detected. At that time the status LED will turn orange and the touch screen will be disabled. You can also configure the QuickPanel to set a bit in the PLC.

- **Low Power Consumption**

When it comes to power consumption, both QuickPanels consumes a mere 50 watts of power. Coupled with its wide input voltage specification, the DC powered units are ideal for applications powered by a battery.

- **Bright TFT Display Not STN**

These units feature a bright 64-color TFT display. This combination provides the user a bright, sharp display of images over a wide viewing angle with no color shift.

- **Ratings and Approvals**

The DC powered QuickPanels are rated for NEMA 4X/12. Agency approvals include Class 1 Division 2, UL, CUL, and CE to meet the demands of harsh industrial environments.

- **Compact Design**

The compact design of the QuickPanel means it takes up less panel space. This design makes the QuickPanel the ideal choice for applications requiring a flat panel operator interface.

- **Ideal Panel Operator Replacer**

QuickPanel can replace various input/output devices such as push-buttons, pilot lights, ASCII display, alarming, and numeric entry and display. QuickPanel supports both static and dynamic bitmap graphics, which can enhance your application through information-rich pictures

- **Battery-Backed Real Time Clock**

The battery-backed real time clock is available for up-to-the-second time display as well as alarm stamping.

QuickPanel Price

Catalog Number	Description
QPICTAE0000	10.5" TFT Color TCP QuickPanel with Ethernet, 120 VAC
QPICTDE0000	10.5" TFT Color TCP QuickPanel with Ethernet, 24 VDC
QPLCTAE0000	12.1" TFT Color TCP QuickPanel with Ethernet, 120 VAC
QPLCTDE0000	12.1" TFT Color TCP QuickPanel with Ethernet, 24 VDC
HMI-KPN-402	Numeric and Function Keypad (for 10.5 QPIC... Displays)
HMI-CCT-302	Replacement Cold Cathode Backlight Tube for QPI...C2P and QPIC...
HMI-CCT-405	Replacement Cold Cathode Backlight Tube for QPLC...

QuickDesigner Software

Catalog Number	Description
QDA-EDT-001	QuickDesigner Advanced Software (includes serial download cable)
QDA-UPD-001	QuickDesigner Advanced Software Upgrade

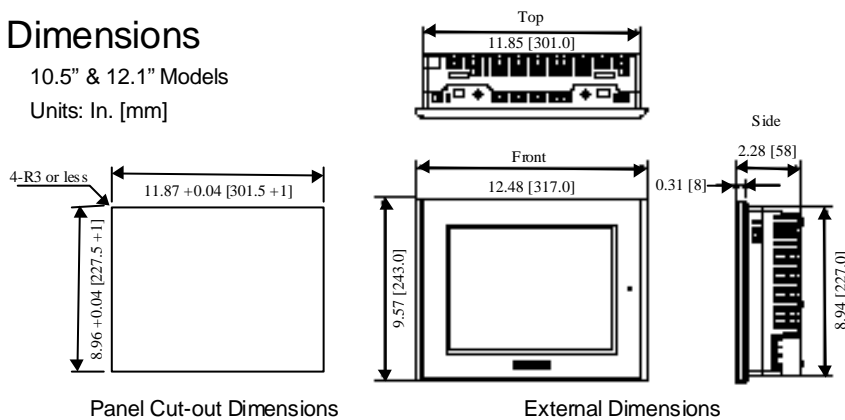
QuickPanel Specifications

Screen Type	12.1" diagonal TFT Color LCD	10.5" diagonal TFT Color LCD
Pixel Resolution	800 (W) x 600 (H)	640 (W) x 480 (H)
Display Area	9.69" (W) x 7.27" (H)	8.32" (W) x 6.24" (H)
Touch Panel	Resistive Film (15 x 10 cells)	Resistive Film (12 x 8 cells)
Colors	64 Colors (256 Colors in 1Q-2002)	
Backlight	User Replaceable (Service life: 50,000 hrs @ 25° C and 24 hr. operation)	
Memory	4 MB, Flash EPROM	
Ratings	NEMA 4X/12	
Approvals	CUL, CE, UL Class 1 Div 2 (Apply to DC powered models only.)	
Operating Temp.	0°C to 50° C	
Input Voltage	19.2 VDC to 28.8 VDC (DC powered models) 85 VAC to 132 VAC (AC powered models)	
Power Consumption	50 Watts or less (AC and DC models)	
Weight	7.7 lbs.	

Dimensions

10.5" & 12.1" Models

Units: In. [mm]



TOTAL CONTROL
A Subsidiary of GE Fanuc

Total Control Products, Inc

Automation Information Centers

USA and Canada 1-800-648-2001

Asia Pacific 65-566-4918

Latin America (610) 437-7932

Mexico 1-800-989-1244

www.total-control.com

Prices shown represent US dollars.



Hand-Held QuickPanel

The Hand-Held QuickPanel is a portable operator interface device that can be used to configure and monitor manufacturing machinery on the fly. It has a 6" diagonal display with 320x240 resolution, just like the 6" QuickPanel Jr. It also comes with approximately 1 MB of application memory.

This new unit has 11 function keys that can be used in conjunction with the touch screen for operator entry. The built-in deadman switch is provided to prevent unintentional operator entry which could result in injury. In addition to touchscreen functionality, there is a hardwired push-button with external contacts, an external buzzer output, and an operator switch with an additional keypad. Panel development is done with QuickDesigner software. This QuickPanel will only support the common serial drivers available in the QuickDesigner software. **Protocols that require a communications module are not supported with the hand-held model** (it does not support any QPJ or QPI communication modules). An optional junction box can be mounted on your panel to provide quick connection from the PLC to the Hand-Held QuickPanel.

- The Hand-Held QuickPanel has a 6" diagonal display that uses resistive touchscreen technology.
- This model is available with passive STN color (8-color support) or LCD monochrome.
- 320 x 240 resolution gives you sharp, clear images.
- 1 MB of application memory is standard. With this much memory, application possibilities are almost endless.
- As an additional option for operator entry, the Hand-Held QuickPanel has 11 programmable function keys that can be used alone or in conjunction with the touch screen.
- The built-in operator switch disables the function keys and touchscreen to prevent unintentional operator entry that could result in injury.
- The Hand-Held QuickPanel supports various input/output devices like push buttons, pilot lights, ASCII display, alarming, and numeric entry and display, all of which can be accessed easily through the touch screen or through function keys.
- Both static and dynamic bitmap graphics are supported, to provide information-rich pictures at a glance.

- The Hand-Held QuickPanel is equipped with a hard-wired push-button feature that can be used in a variety of ways (e.g., as a machine stop button).
- The battery-backed real-time clock is available for up-to-the-second time display, as well as alarm stamping.
- This handy unit withstands operating temperatures between 0 and 40°C.
- Over 40 PLC drivers are supported via award-winning QuickDesigner software.

The Hand-Held QuickPanel will be available in the following forms:

Monochrome unit	QPH-2D100-L2P
Color unit	QPH-2D100-S2P
QUICKBUNDLE Kit Monochrome	QBH-2D100-L2P
QUICKBUNDLE Kit Color	QBH-2D100-S2P
Junction box	HMI-JBX-201
Protective overlays (20 per Pack)	HMI-COV-204
Connection cable for hand-held unit	HMI-CAB-A02
24VDC 1.3A power supply with leads	510-1000-004

QUICKBUNDLE Kits

Everything you need for your first project!

- A Hand-Held QuickPanel (Monochrome or Color)
- Connector cable
- Junction box
- HMI-JBX-201
- 24VDC power supply
- 510-1000-004
- HMI-CAB-A02

Windows™ is a trademark of Microsoft Corporation

QuickPanel Cable Part Numbers

The serial interface port connects the QUICKPANEL to your PLC. If you need a cable part number, please check the [Cable Part Number List](#).



[QuickDesigner Software](#)

QuickDesigner is a friendly Windows-based graphical



editor common to all QuickPanel models. QuickDesigner offers a comprehensive set of panel operators including push-buttons, selector switches, pilot lights, text and numeric data displays, bar-graph displays, static and dynamic bit-mapped or object-oriented images, and more. Each of these functions as naturally as its discrete counterpart; push buttons toggle on and off at a touch, pilot lights glow to indicate active status, etc. Despite its impressive array of features, QuickDesigner is very easy to use. We promise you'll be configuring application screens within 10 minutes, or we'll give your money back. <

[Go to Hand Held QuickPanel Specifications](#)

[Privacy Policy](#) | [Copyright Information](#) |



Hand Held QuickPanel

Specifications

Screen Type 6" Diagonal Monochrome LCD or STN Color

Power Requirements 20.4-27.6 VDC

Physical Size 9.33" W x 6.81" H x 2.68" D (237mmW x 173mmH x 68mmD)

Temperature Rating 0°C to 40°C Operating, -20 - 60°C Storage

Humidity 20-85% Non-Condensing

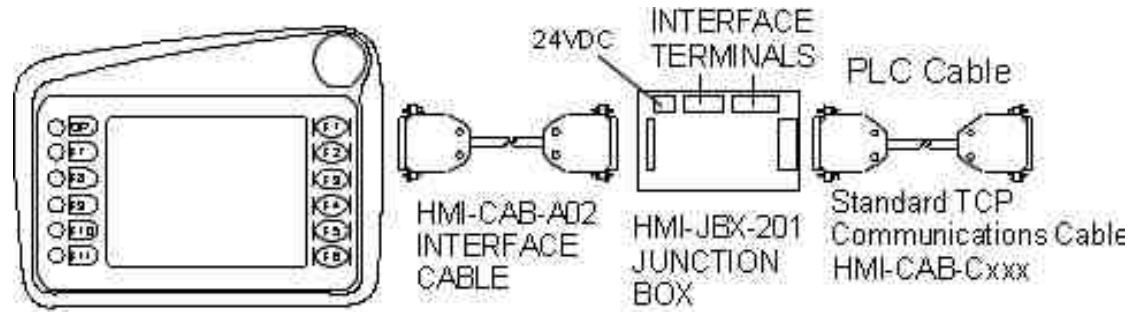
Shock 10-25 Hz (2G on each of X, Y, Z 30 min)

Rating IP63, NEMA 1

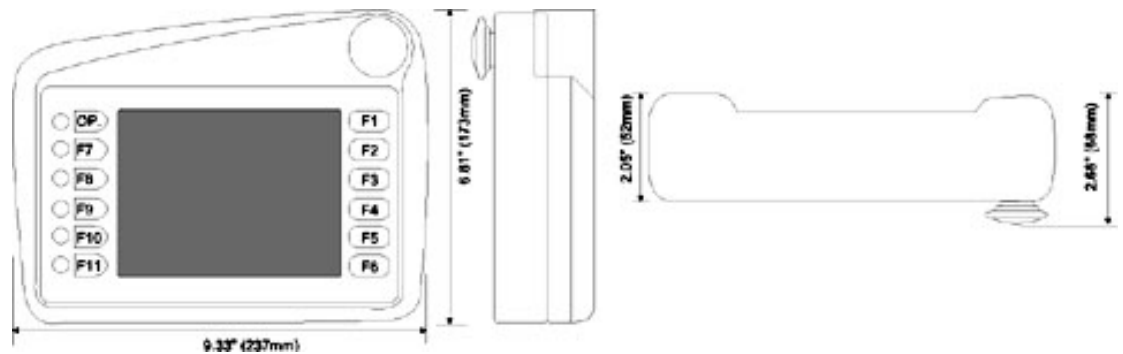
Weight 1.91 lbs. (870g)

QuickPanel Hand Held Interface

The QPH connects to a PLC and other devices by means of a 12' cable and interface board. The interface board has a 25 pin female connector for use with standard TCP PLC cables. Terminal blocks provide for easy connection to 24VDC and other signal sources.



QuickPanel Hand Held Dimensions



[Go to the Hand Held QuickPanel Product Site](#)

QuickPanel Cable Part Numbers

The serial interface port connects the QUICKPANEL to your PLC. If you are looking for a cable part number, please check the [Cable Part Number List](#).



QuickPanel Mini

The QuickPanel Mini is a low-end graphical interface providing limited functionality at a low price. With a 6" diagonal display and 320x240 resolution (just like the 6" QuickPanel Jr.) the QuickPanel Mini comes with a back-lit LCD monochrome screen. The Mini supports the more commonly used panel operators like push-buttons (including illuminated ones), pilot lights, bitmaps, numeric entry, numeric display, static text, legend plate, selector switches, and local message displays. It comes with a total of 5 screens of application memory. It uses 24 VDC power to operate and is rated NEMA 4, 12 (self-certified). The QuickPanel Mini helps bridge the gap between our character-based message display products and our full graphics display touchscreens.

- The QuickPanel Mini has a 6" diagonal display that utilizes resistive touchscreen technology.
- 320 x 240 resolution provides the user with clear images.
- The QuickPanel Mini can withstand operating temperatures between 0 and 50°C.
- The QuickPanel Mini supports input and output devices like push-buttons, pilot lights, message displays, and numeric entry and display.
- QuickPanel Mini applications can be converted easily to applications for traditional QuickPanels with just the click of a mouse.
- The LCD monochrome display provides the perfect solution for direct-viewing applications.
- Static bitmap graphics are supported to bring information-rich pictures to operators at a glance.
- The QuickPanel Mini comes complete with 5 panels of application memory that can be creatively designed to suit your small application needs.
- The QuickPanel Mini is configured with award-winning QuickDesigner software, giving it uniformity within the QuickPanel family.
- The Mini supports all QuickDesigner drivers, including those requiring communications drivers.

QuickStart Mini Kits

- A 6" QuickPanel Mini

- Full documentation
- 24VDC power supply
- PLC cables included: HMI-CAB-C83
- Quick Designer for Windows™ off-line editor
- Download cable

Windows is a trademark of Microsoft Corporation

QuickPanel Cable Part Numbers

The serial interface port connects the QuickPanel to your PLC. If you need a cable part number, please check the [Cable Part Number List](#).



[QuickDesigner Software](#)

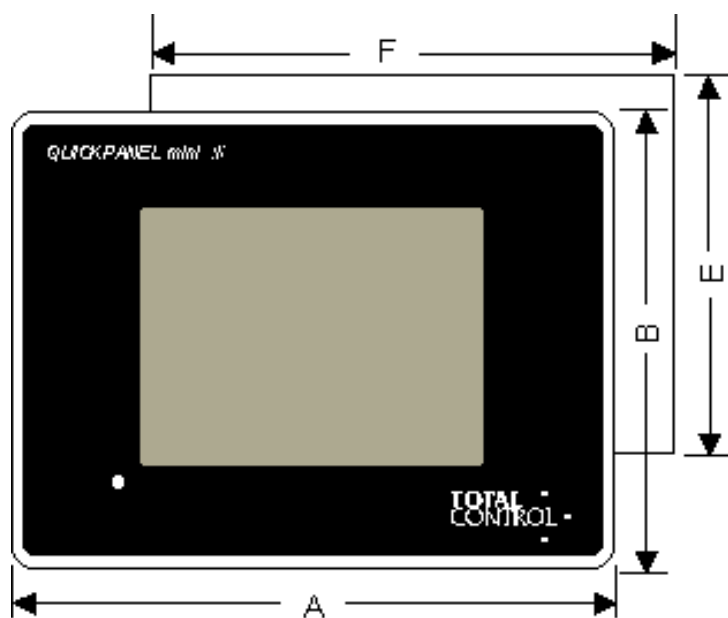
QuickDesigner is a friendly Windows-based graphical editor common to all QuickPanel models. QuickDesigner offers a comprehensive set of panel operators including push-buttons, selector switches, pilot lights, text and numeric data displays, bar-graph displays, static and dynamic bit-mapped or object-oriented images, and more. Each of these functions as naturally as its discrete counterpart; push buttons toggle on and off at a touch, pilot lights glow to indicate active status, etc. Despite its impressive array of features, QuickDesigner is very easy to use. We promise you'll be configuring application screens within 10 minutes, or we'll give your money back.

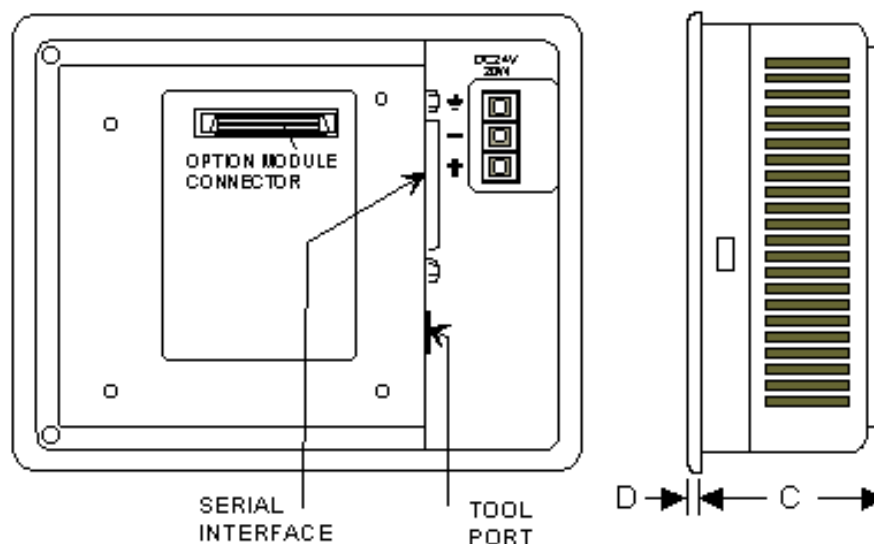
[Go to the QuickPanel Mini Specification Page](#)



QuickPanel Mini

Product Dimensions





Model	QPM-2D100-L2P
Dim A	8.267"(210mm)
Dim B	6.299"(160mm)
Dim C	2.28"(58mm)
Dim D	197"(5mm)
Dim E	5.59"(142mm)
Dim F	7.56"(192mm)

Product Specifications

Power Supply	20.4--27.6 VDC (12 Watts Max.)
Display	6" diagonal Monochrome LCD with Fluorescent backlight
Touch Screen	Analog resistive
Resolution	320 W x 240 H
Temperature	Operating: 0-50°C
Humidity	30-85% non-condensing
Dimensions	See Above
Weight	1.65 lbs
Memory	5 Panels
Rating	NEMA 12/4 (Self Certified)

[Go to the QuickPanel Mini Product Description Page](#)

QuickPanel Cable Part Numbers

The serial interface port connects the QUICKPANEL to your PLC. If you are looking for a cable part number, please check the [Cable Part Number List](#).

| [Privacy Policy](#) | [Copyright Information](#) |



Video Display QuickPanel

The Video Display QuickPanel comes to you with a 10.5" TFT color display. TFT (thin film transistor) active technology allows easy viewing at any angle, in any ambient lighting condition.

The Video Display QuickPanel also comes standard with three video input channels (channel 0, 1, 2) for access to different picture displays. This member of the QuickPanel family has the same cutout and install dimensions as the current 10.5" model, giving you an opportunity to easily replace your existing 10.5" QuickPanels. 640 X 480 resolution gives great clarity and definition to your video images and panel objects. With 1 Mb of application memory, this unit supports even the most sophisticated applications.

Just like other QuickPanels, the Video Display QuickPanel supports a full complement of PLC drivers and communication modules.

Pricing

The QPI-211V0-C2P Color TFT QuickPanel will be available in the following forms:

Standalone Unit	QPI-211V0-C2P	\$7745 List
QUICKSTART Kit	QSI-211V0-C2P	\$8145 List

QuickStart Kits

Video Display Color TFT QuickPanel	PLC Cables Included: <ul style="list-style-type: none"> ● HMI-CAB-C53 ● HMI-CAB-C58 ● HMI-CAB-C82 ● HMI-CAB-C83
QuickDesigner for Windows™ off-line editor	
Full documentation	
Download cable	
120 VAC line cord	
Windows™ is a trademark of Microsoft Corporation	



QuickDesigner Software

QuickDesigner is a friendly Windows-based graphical editor common to all QuickPanel models. QuickDesigner offers a comprehensive set of panel operators including push-buttons, selector switches, pilot lights, text and numeric data displays, bar-graph



displays, static and dynamic bit-mapped or object-oriented images, and more. Each of these functions as naturally as its discrete counterpart; push buttons toggle on and off at a touch, pilot lights glow to indicate active status, etc. Despite its impressive array of features, QuickDesigner is very easy to use. We promise you'll be configuring application screens within 10 minutes, or we'll give your money back.

[Go to the Video Display QuickPanel Specification Site](#)

QuickPanel Cable Part Numbers

The serial interface port connects the QUICKPANEL to your PLC. If you need a cable part number, please check the [Cable Part Number List](#).

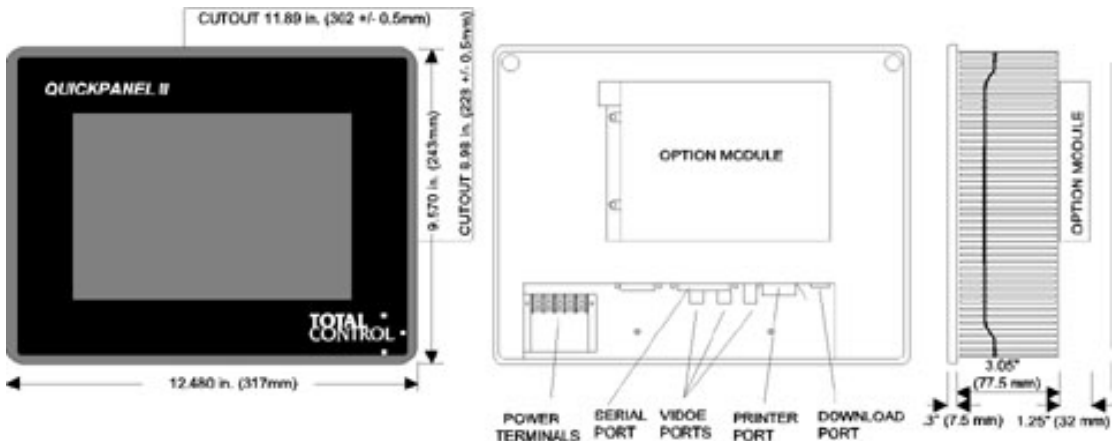
[| Privacy Policy](#) | [Copyright Information](#) |

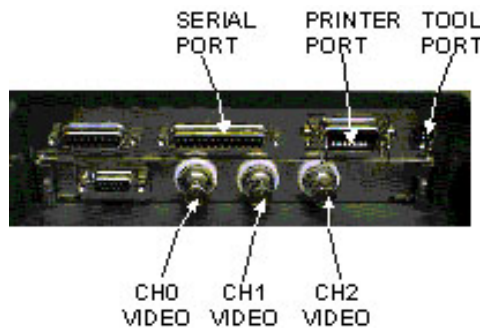


Video Display QuickPanel

Specifications

Power Supply	85 to 132 VAC 50/60 Hz @ 50VA max.
Display	10.5" Color TFT 8.48"W x 6.32"H x 10.5"diag.
Touch Screen	Analog resistive
Resolution	640 x 480 screen resolution, 32 x 24 touch panel resolution
Temperature	Operating: 0-45°C, -10-60°C storage
Humidity	30-85% non-condensing
Dimensions	9.57"H x 12.48"W x 3.05"D 243mmH x 317mmW x 85mmD
Weight	6.6 lbs (3kg)





[Go to the Video Display QuickPanel Description Page](#)

QuickPanel Cable Part Numbers

The serial interface port connects the QUICKPANEL to your PLC. If you are looking for a cable part number, please check the [Cable Part Number List](#).

| [Privacy Policy](#) | [Copyright Information](#) |