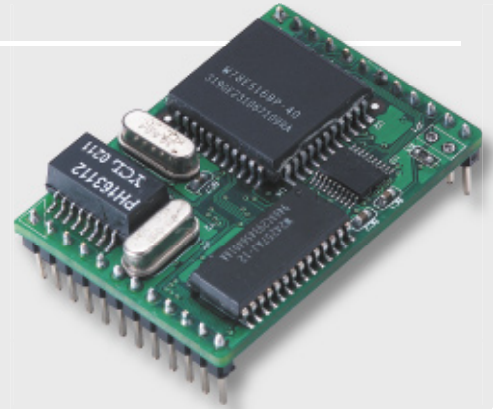


# NE-4000T

## 10Mbps Embedded Network Enabler for Serial Devices

### Features

- Ready-to-go Serial-to-Ethernet module to network enable any serial (TTL) device
- 10 Mbps Ethernet interface, 115.2 Kbps Serial interface
- Supports TCP Server/Client, UDP, and Real COM modes
- Supports DHCP, Static IP
- The most compact size, only 44 × 31.48 mm
- Single +5V input, 0.3W low power consumption

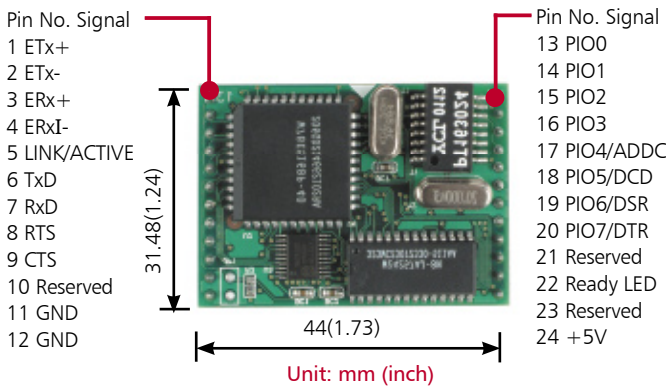


### Overview

NE-4000T is a low-cost embedded Serial-to-Ethernet module in 24-pin DIL (dual-in-line) form factor, which measures only 44 × 31.48 mm, allowing device manufacturers to build “truly embedded” network connectivity into their products —no cabling or wiring required. Moxa’s NE-4000T provides full serial

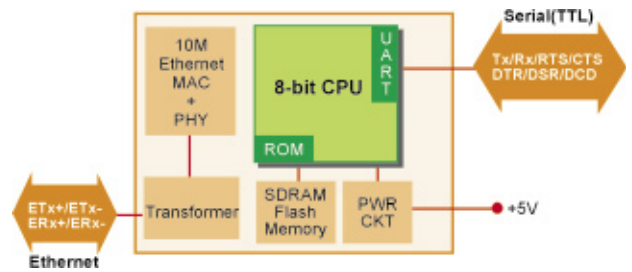
signals, in standard TTL level, to support communication with any manufacturer’s product. And NE-4000T consumes only 0.325W (65 mA @ +5V) of power.

### Dimensions and Pin Assignments



(44 × 31.48 mm, 24-pin DIL package, 2.54 mm pitch)

### Block Diagram



## Specifications

### Form Factor

**Type:** 24-pin dual-in-line (DIL) package

**Dimensions:** 44 × 31.48 mm

### LAN Interface (TTL)

**Type:** 10 Mbps

**Protection:** 1.5 KV isolation

### Serial Interface (TTL)

TxD, RxD, RTS, CTS, DTR, DSR, DCD, GND

### Serial Parameters

**Parity:** None, Even, Odd **Data Bits:** 7, 8 **Stop Bits:** 1, 2

**Speed:** 50 bps to 115.2 Kbps

**Flow Control:** RTS/CTS, XON/XOFF

### Digital I/O Pins

Eight programmable IO pins (GPIO)

### TCP/IP Protocols

ICMP, ARP, IP, TCP, UDP, DHCP, HTTP

### Operation Modes

TCP Server, TCP Client, UDP, Real COM modes (Windows 98/2000/XP)

### Management Utilities

Windows Administration Utility, Web browser, telnet console, serial console, and NECI Library (.DLL) for developing users' own management utility

### Power Requirements

**Power input:** 5 VDC, +/- 5%

**Power consumption:** 290 mA @ 5 VDC (max.)

### Temperature/Humidity

**Operation:** 0 to 70°C (32 to 158°F), 5 to 95% RH

**Storage:** -20 to 85°C (-4 to 185°F), 5 to 95% RH

**Regulatory Approvals** FCC Class A, CE Class A

**Warranty** 5 years

## Ready-to-go Software for Easy Integration

### Totally integrated hardware & TCP/IP software, ready-to-go module

Moxa's NE-4000T Embedded Network Enabler provides robust and ready-to-use software. NE-4000T supports various and operation modes, such as TCP Server, TCP Client, UDP, COM driver modes that can seamlessly integrate network connectivity into your device and PC software.

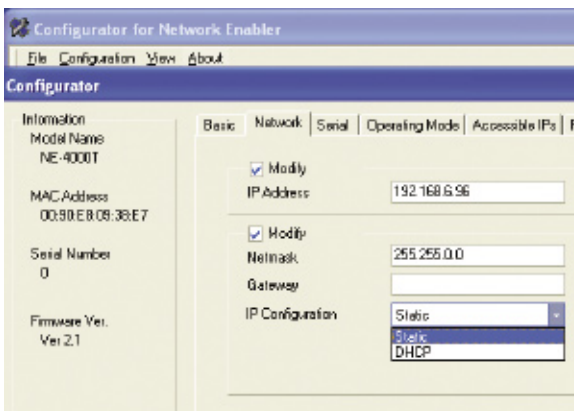
#### Application-Ready Firmware!!

- |  |  |
|--|--|
| <input checked="" type="checkbox"/> TCP Server | <input checked="" type="checkbox"/> UDP        |
| <input checked="" type="checkbox"/> TCP Client | <input checked="" type="checkbox"/> COM Driver |

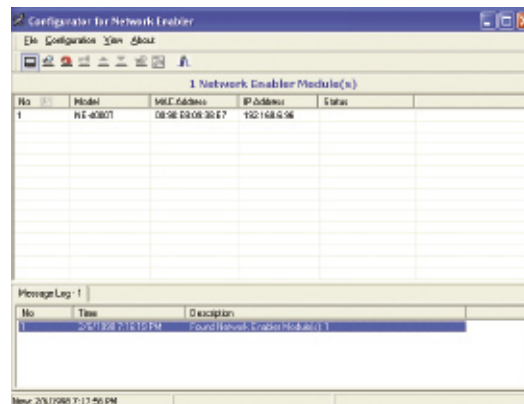
### Configure and Manage Network Enablers with Moxa's Windows Utility

For configuration and management purposes, NE-4000T comes with a powerful Windows-based administration utility for IP address configuration, communication parameters settings, etc. The main features include:

- Search and locate installed Network Enablers over the network
- Export/ import configuration parameters



\*Configure network, serial, and operation mode parameters from anywhere on a TCP/IP network.

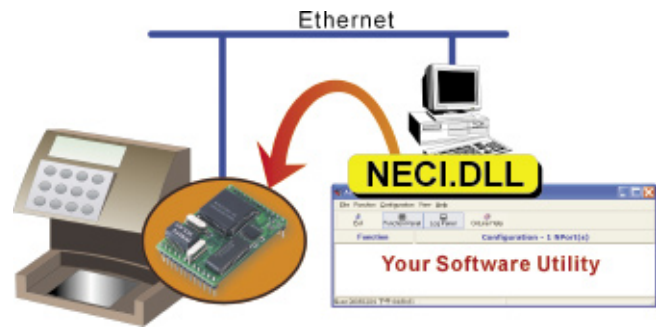


\*User-friendly Windows configurator for NE-4000T

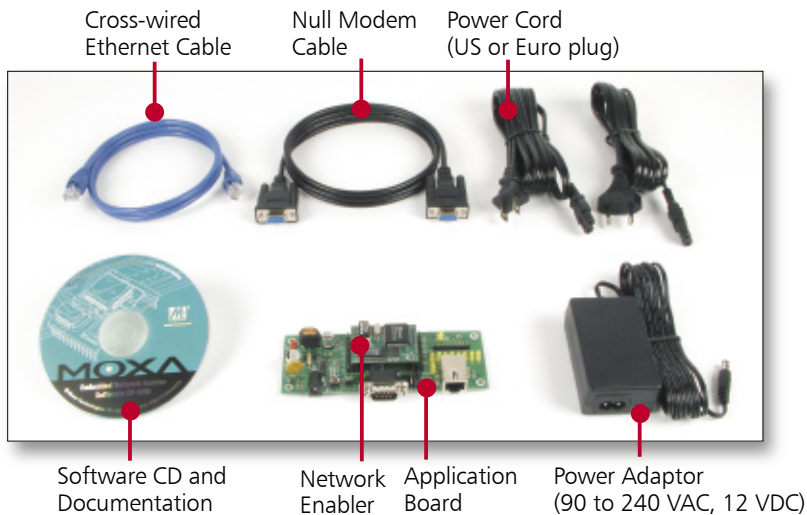
## Embedded Network Enabler Solutions

### Configure and Manage with User Application

The above NE-4000T Windows configuration utility functions can be easily integrated into manufacturers application software with Moxa's royalty-free NECI (Network Enabler Configuration Interface) APIs. These Windows .DLL format APIs support a Visual C++, Borland C++ Builder programming environment.

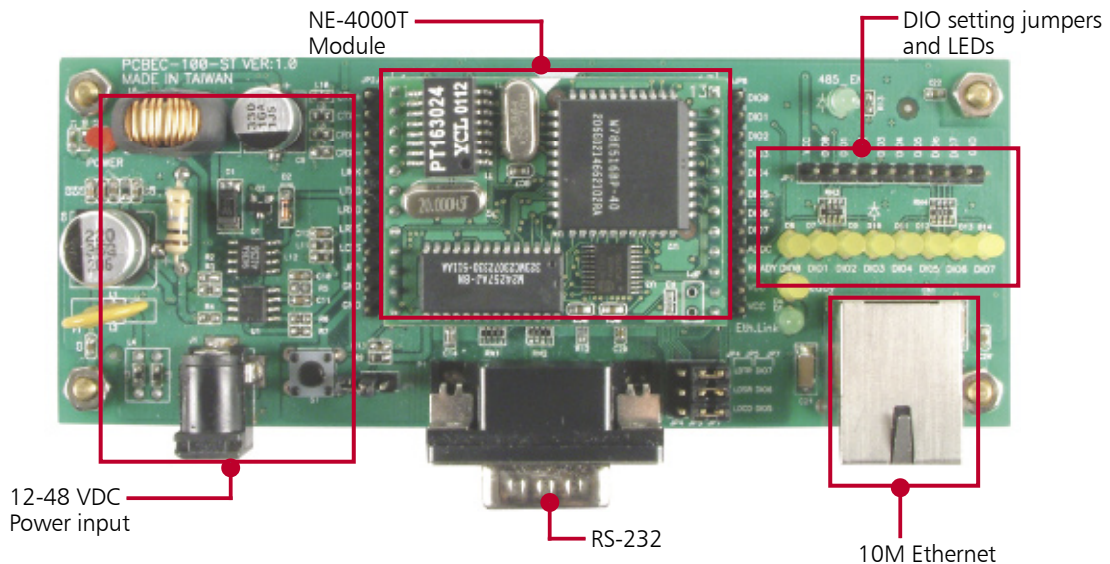


### NE-4000T-ST Starter Kit



The Moxa Network Enabler Starter Kit lets you evaluate all Network Enabler functions right away. The Starter Kit supplies an application board, power adaptor, Ethernet and serial cable, along with a software CD-ROM. The application board, which is equipped with serial, Ethernet, digital I/O, and power circuit, helps you evaluate the network enabler module.

### NE-4000T Application Board



### Ordering Information

**NE-4000T:** Network Enabler for Serial (TTL) devices, DIL package

**NE-4000T-ST:** Starter Kit for NE-4000T Network Enabler