

100MB/200MB Ready Access Splice Closures

■ Outside Plant for
Business-Critical Continuity

Key Features

- Designed for load-coil mounting to provide versatility: one unit for splicing, distribution, or load point
- Inner-shield bond and ground system ensures good transmission and sound electrical shield continuity
- Branch nozzle kits available so lateral cables can be placed at any time
- Numbered drop wire entrances for good housekeeping
- Polyethylene construction; stainless steel external parts provide long life

Description

100MB/200MB Ready Access aerial splice or terminal splice closures provides access to lashed or Figure 8 aerial cable for straight or branch splices and service drops, while protecting the splice from the environment. Because the messenger strand is installed within the 100MB and 200MB closures, it does not need to be separated from the cable.

Ready Access splice closures accommodate either four 3-pair 381 series protected terminal blocks, or four 145-type terminal blocks to meet most terminal requirements.

A patented inner-shield bonding system features a clamping arrangement that holds the cable-shield 360° in circumference to ensure shield continuity. The MB version has a barbed inner clamp for shield continuity. The MBK version has a multi-position tie bar for easy positioning of shield bonding connectors, and an insulation piercing hanger clamp for support and grounding to the messenger.

The 100MB/200MB features a lift-off cover, detachable cover tie snaps, detachable snap-in drop wire rings, and numbered drop wire entrances molded onto the base.

Application

100MB and 200MB Ready Access aerial splice or terminal closures enclose straight, branch, and terminal splices, or are used for load-coil mounting. This series accommodates both messenger strand and cable.



100MB Straight Splice



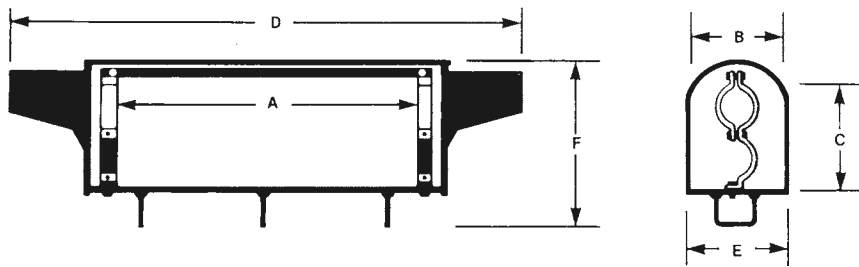
200MBY Branch Splice



100MB/200MB Ready Access Splice Closures

Dimensions

Catalog Number	A	B	C	D	E	F
100MB						
100MBY	14.06-in.	2.5-in.	4.31-in.	24.18-in.	3.06-in.	4.81-in.
100MBK	(357.12mm)	(63.50mm)	(109.57mm)	(614.43mm)	(77.72mm)	(122.17mm)
100MBKY						
200MB						
200MBY	16.75-in.	3.5-in.	6.5-in.	29.75-in.	3.75-in.	9.25-in.
200MBK	(425.45mm)	(88.90mm)	(165.10mm)	(755.65mm)	(95.25mm)	(234.95mm)
200MBKY						



Straight Splice Shown

Ordering Information

Catalog Number	Part Number	Description	Cable Diameter Range
100MB	F003700	Closure	.40" to 1.20" (10.16mm to 30.48mm)
100MBY	F003705	Closure includes branch kit (replaces 300-0 series with an extra branch kit)	.40" to .80" branch (10.16mm to 20.32mm)
100MBK	F003707	Closure with multi-position tie bar	.40" to 1.20" (10.16mm to 30.48mm) and 1/4" dia. messenger cable
100MBKY	F003708	Closure includes branch kit with multi-position tie bar (replaces 300-0 series with an extra branch kit)	.40" to .80" branch (10.16mm to 20.32mm)
200MB	F003980	Closure	1.20" to 2.20" (30.48mm to 55.88mm)
200MBY	F003985	Closure includes branch kit (replaces 400-0 series with extra branch kit)	.40" to 1.60" branch (10.16mm to 40.64mm)
200MBK	F003983	Closure with multi-position tie bar	1.20" to 2.20" (30.48mm to 55.88mm) and 1/4" dia. messenger cable
200MBKY	F003984	Closure includes branch kit with multi-position tie bar (replaces 400-0 series with an extra branch kit)	.40" to 1.60" branch (10.16mm to 40.64mm)

NOTE: For Y-branch nozzle kits, hanger bracket kits, messenger insulators, end plugs and sealing tape, see Accessories.

Emerson Network Power.

The global leader in enabling business-critical continuity.

- AC Power
- Embedded Power
- Precision Cooling
- Connectivity
- Monitoring
- Racks & Integrated Cabinets
- DC Power
- **Outside Plant**
- Services
- Embedded Computing
- Power Switching & Controls
- Surge Protection

Emerson Network Power Energy Systems

4350 Weaver Parkway, Warrenville, IL 60555
 Toll Free: 800-800-1280 (USA and Canada)
 Telephone: 440-246-6999 Fax: 440-246-4876
www.EmersonNetworkPower.com/EnergySystems

RDUP : 2

© 2006 Emerson Network Power Energy Systems, North America, Inc. All rights reserved.

The Emerson logo is a trademark and a service mark of Emerson Electric Co. Emerson Network Power is a division of Emerson Electric Co.

Printed in USA

