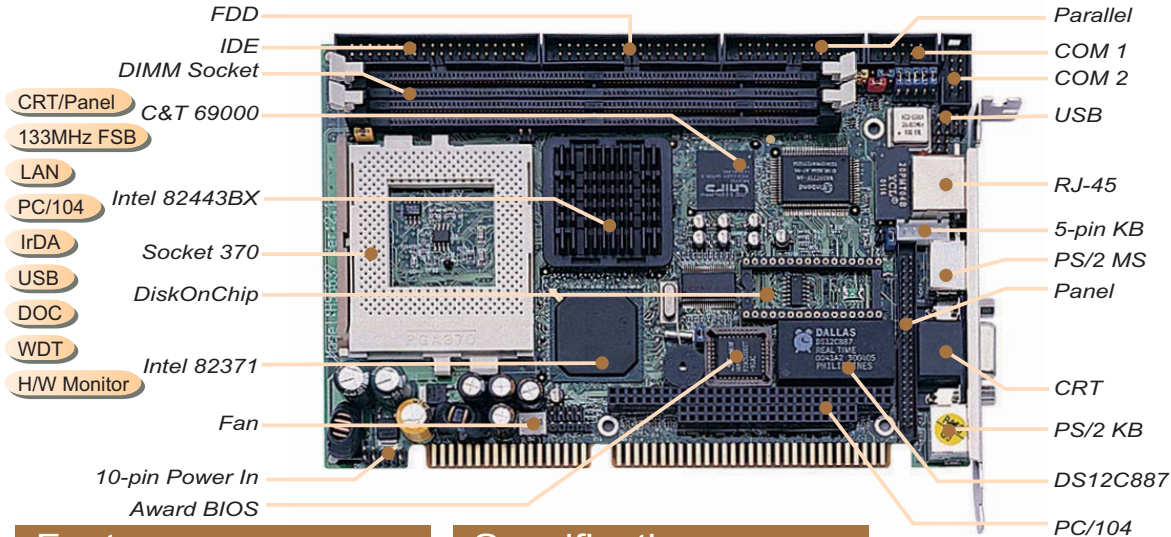


# HS-6637

## Socket 370 133MHz FSB ISA Bus SBC with CRT/Panel & LAN



### Features

- ✓ Socket 370 for Intel Celeron/ Coppermine 266MHz~1GHz CPU
- ✓ Intel 82443BX/82371 system chipset
- ✓ 100MHz FSB providing up to 133MHz FSB (ver 3.0 only)
- ✓ Two DIMM sockets with a max. capacity of 512MB
- ✓ Winbond W83977 super I/O chipset
- ✓ Two RS-232 serial ports
- ✓ PC/104 Bus connector
- ✓ C&T 69000 CRT/Panel display controller
- ✓ Intel 82558 10/100 Based LAN
- ✓ DiskOnChip socket supporting memory sizes of up to 288MB
- ✓ Supports Hardware Monitor function (ver 3.0 only)

### Specifications

- \* **CPU:** Socket 370 for Intel Celeron/ Coppermine 266MHz~1GHz CPU
- \* **Bus Interface:** ISA Bus
- \* **System Clock Rate:** 100MHz FSB providing up to 133MHz FSB (ver 3.0 only)
- \* **Memory:** Two DIMM sockets supporting up to 512MB
- \* **Chipset:** Intel 82443BX/82371
- \* **I/O Chipset:** Winbond W83977
- \* **VGA:** C&T 69000 with 2MB memory supporting CRT/Panel displays up to 1280 x 1024 at 256 colors
- \* **IDE:** Two IDE disk drives supporting ATA/33 and with a transfer rate up to 33MB/sec.
- \* **FDD:** Supports up to two floppy disk drives
- \* **Parallel:** One enhanced bi-directional parallel port supporting SPP/ECP/EPP
- \* **LAN:** Intel 82558 10/100 Based LAN
- \* **Serial Port:** 16C550 UART-compatible RS-232 x 2 serial ports with 16-byte FIFO
- \* **PC/104:** PC/104 connector for 16-bit ISA Bus
- \* **IrDA:** One IrDA TX/RX header

- \* **USB:** Two USB connectors
- \* **Keyboard:** PS/2 6-pin Mini DIN or 5-pin connector
- \* **Mouse:** PS/2 6-pin Mini DIN
- \* **DiskOnChip:** DiskOnChip socket supporting memory sizes of up to 288MB
- \* **BIOS:** Award PnP Flash BIOS
- \* **Watchdog Timer:** Sets 1, 2, 10, 20, 110, 220 seconds activity trigger with Reset or NMI
- \* **CMOS:** DS12C887 or equivalent device
- \* **DMA Channels:** 7
- \* **Interrupt Levels:** 15
- \* **Extra Power Connector:** One 10-pin +5V/+12V connector
- \* **Maximum Power Consumption:** +5V@5A, +12V@120mA
- \* **Operating Temperature:** 0~60°C
- \* **Hardware Monitor:** Winbond W83783S (ver 3.0 only)
- \* **Board Size:** 18.5 x 12.1 cm

### Ordering Guide

- ◎ HS-6637  
Socket 370 133MHz FSB ISA Bus SBC with CRT/Panel & LAN
- ◎ HS-6637V  
Socket 370 133MHz FSB ISA Bus SBC with CRT/Panel

Specifications are subject to change without notice.

The Industrial PC Authority



### BOSER Technology Co., Ltd.

15F-6, No. 77, Hsin Tai Wu Road, Sec. 1, Hsichih, Taipei Hsien 221 Taiwan TEL : 886-2-26983333 FAX : 886-2-26983300  
<http://www.boser.com.tw> <http://www.isb.com.tw> E-Mail: [webmaster@boser.com.tw](mailto:webmaster@boser.com.tw)

U.S.A.  
 TEL : +1 650 4280868  
 FAX : +1 650 4281172

U.K.  
 TEL : +44 1543 466552  
 FAX : +44 1543 466553

JAPAN  
 TEL : +813 34248120  
 FAX : +813 34180521

FRANCE  
 TEL : +33 1 69061790  
 FAX : +33 1 69433732

SHANGHAI  
 TEL : 021 62789292  
 FAX : 021 62789393

GERMANY  
 TEL : +49 221 954790  
 FAX : +49 221 9547988

KOREA  
 TEL : +82 2 34737862  
 FAX : +82 2 34743120

ISRAEL  
 TEL : +972 3 9203456  
 FAX : +972 3 9203535

FINLAND  
 TEL : +358 2 6203753  
 FAX : +358 2 6203770

BEIJING  
 TEL : 010 82660235  
 FAX : 010 82660241