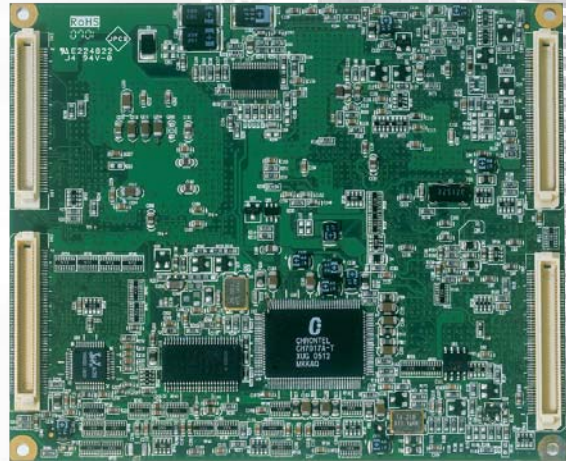
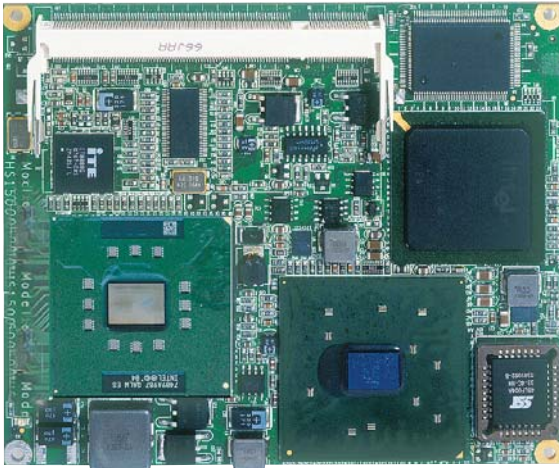


# HS-1500M

ULV Intel® Celeron® M processor ETX Module  
Provides 24-bit LVDS Panel, Intel® 82562 Ethernet



## Features

- ULV Intel® Celeron® M processor 600MHz/512K, supports 400MHz FSB
- 1 x SO-DIMM up to 512MB DDR SDRAM
- Intel® 852GM/ICH4 system chipset
- Intel® 852GM integrated VGA for CRT & LVDS
- Intel® 10/100 Mbps ethernet
- AC'97 audio codec
- Supports 2 x COM, 4 x USB2.0, mini PCI slot
- Supports 24-bit LVDS, H/W Monitor function

## System

- CPU**  
ULV Intel® Celeron® M processor 600MHz/512K
- FSB**  
400MHz FSB
- BIOS**  
AMI PnP Flash BIOS
- System Chipset**  
Intel® 852GM/ICH4
- I/O Chipset**  
Winbond W83627HG-AW
- System Memory**  
1 x 200-pin SO-DIMM socket up to 512MB DDR SDRAM
- Watchdog Timer**  
Software programmable time-out intervals from 1~255 sec. or 1~255 min.
- H/W Status Monitor**  
Monitoring temperatures, voltages, and cooling fan status
- Expansion Slot**  
1 x Type I mini PCI slot  
Wireless LAN module (option)
- Operating Temperature**  
0~60 degrees C
- Operating Humidity**  
0~95%, non-condensing
- Size (L x W)**  
114 x 99.57 mm

## I/O Interface

- MIO (connector on carrier board)**  
2 x RS-232  
4 x USB2.0  
2 x IDE  
1 x LPT  
1 x PS/2 for KB  
1 x PS/2 for MS

## Display

- Chipset**  
Intel® 852GM
- Display Memory**  
8MB video memory
- LVDS**  
24-bit single/dual-channel
- Resolution**  
CRT Mode: 1600 x 1200

## Audio

- Chipset**  
RealTek ALC202A
- Audio Interface**  
On carrier board

## Ethernet

- Chipset**  
Intel® 82562 10/100 Mbps LAN
- Ethernet Interface**  
On carrier board

## Ordering Guide

- HS-1500M/600MHz**  
ULV Intel® Celeron® M processor 600MHz/512K ETX Module w/CRT, LAN, Audio
- HS-1500M/1GHz**  
ULV Intel® Celeron® M processor 1GHz/512K ETX Module w/CRT, LAN, Audio
- EB-1500**  
ETX Carrier Board w/DVI-I display x 4
- EB-1550**  
ETX Carrier Board

- Accessory Options**  
LVDS Cable, COM Cable, USB Cable

Panel PC

Bare Bone

SBC

Chassis

Power Supply

Backplane