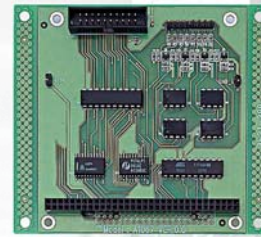


A-1045

- ◆ Power converter with two RS-232 interface and 10 Based LAN
- ◆ +5V converter to +12V/-12V
- ◆ PC/104 dimensions
- ◆ 16C550 UART-compatible RS-232 x 2 with 16-bit FIFO
- ◆ 10 Based LAN controller



A-1067

- ◆ PC/104 Bus module with 8-bit isolated DIO



A-1117

- ◆ PCI-104 module for GB LAN, Mini PCI and Video Capture function
- ◆ 1 x Realtek RTL8110SC GB LAN
- ◆ PCI-104, 1 x mini PCI, 1 x RJ-45, 4 x BNC jack

Ordering Guide

- ◆ **A-1045**
PC/104 Bus Module w/COM x 2, 10 Based LAN, Power Interfer
- ◆ **A-1045A**
PC/104 Bus Module w/COM x 2, 10 Based LAN
- ◆ **A-1045B**
PC/104 Bus Module w/COM x 2, Power Interfer
- ◆ **A-1045C**
PC/104 Bus Module w/COM x 2
- ◆ **A-1045D**
PC/104 Bus Module w/10 Based LAN

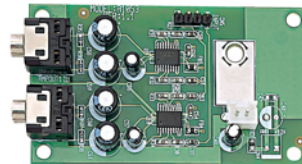


A-1053A

IrDA Module

- ◆ IrDA interface

Accessory Options
291-22010010
30cm cable



A-1053B

Audio Amplifier

- ◆ 2W four-channel audio amplifier



A-1054 / A-1054A

CF Reader

- ◆ CompactFlash card adapter, supports up to 512MB
- ◆ A-1054 provides IDE to CF
- ◆ A-1054A provides USB to CF



A-1050

LAN Card

- ◆ 10/100 Based mini LAN card
- ◆ Intel® 82559 LAN controller
- ◆ For 1U high chassis use
- ◆ PCI Bus interface



A-1064

LAN Card

- ◆ 10/100 Based mini LAN card
- ◆ RealTek RTL8100BL LAN controller
- ◆ For 1U high chassis use
- ◆ PCI Bus interface



HS-4559

LAN Card

- ◆ 10/100 Based mini LAN card
- ◆ Intel® 82559 LAN controller x 4
- ◆ RJ-45 connector x 4
- ◆ PCI Bus interface



A-1066

Capture & Audio Module

- ◆ Four capture in and one 3D audio controllers
- ◆ Conexant Fusion 878A capture chipset x 4
- ◆ ESS Solo1 3D audio controller x 1
- ◆ Mini PCI interface
- ◆ For OEM/ODM, without AP



A-1085

Display Card

- ◆ CRT mini display card
- ◆ TOPRO 6508 display controller
- ◆ 1MB video memory onboard
- ◆ ISA Bus interface