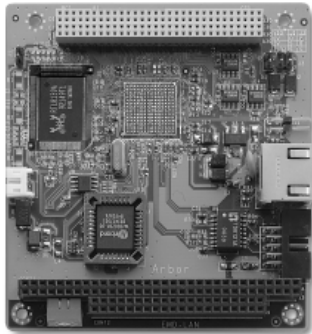


Em104P-LAN100R

10/100 Mbps Realtek 8139C Ethernet Module



Features

- LAN 10/100Mbps, RTL8139C
- Full Duplex transfer mode
- Power saving and Wake-on-LAN

Specifications

Chipset

Realtek RTL8139C

Protocol / Performance

10 Mbps and 100 Mbps meet IEEE 802.3X

Boot ROM support

Up to 128KB Flash Memory Boot-ROM

Indicator LEDs

2 LED on RJ-45 connector - Activity/Link and 100 Mbps indicator additional 4-pin header for external LEDs

Connectors

RJ-45 interface connector 10-pin box-header for extension cable with RJ-45 connector with LED, 3-pin wake up LAN control line

Power Saving and Wake-up LAN

Advanced power saving mode when LAN function or wake-up function is not used, supports Link Change, Microsoft "Wake-up Frame" and AMD "Magic Packet" for WOL function

OS Support

Microsoft Windows NT4.0, Microsoft Windows* 95, 98, 2000, XP, CE, Novel NetWare* 3.11, 3.12 & 4.1x, 5 Server, Packet driver for UNIX Client, UnixWare 7.0, Linux, SCO Unix, MAC, QNX, Free BSD, Macintosh Mac OS 8.x/9.x

Pressfit PC/104 Connectors

High quality pressfit connectors for ISA and PCI bus to guarantee optimal connection and fit

Power Requirement

0.52 W (105 mA @ +5 V) fully functional

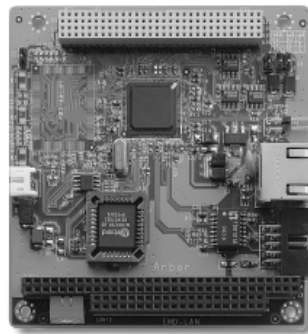
Ordering Information

Em104P-LAN100R

PC/104-Plus fast Ethernet module with Realtek RTL8139C

Em104P-LAN100N

10/100 Mbps Intel 82559 Ethernet Module



Features

- LAN 10/100Mbps, Intel 82559
- RJ-45 connector with 2 LED
- Power saving and Wake-on-LAN

Specifications

Chipset

Intel 82559

Protocol / Performance

10 Mbps and 100 Mbps meet IEEE 802.3X

Boot ROM support

Up to 128KB Flash Memory Boot-ROM

Indicator LEDs

2 LED on RJ-45 connector, additional 4-pin header for external LEDs

Connectors

RJ-45 interface connector 10-pin box-header for extension cable with RJ-45 connector with LED, 3-pin wake up LAN control line

Power Saving and Wake-up LAN

Advanced power saving mode when LAN function or wake-up function is not used, supports Link Change, Microsoft "Wake-up Frame" and AMD "Magic Packet" for WOL

OS Support

Microsoft Windows NT4.0, Microsoft Windows* 95, 98, 2000, XP, CE, Novel NetWare* 3.11, 3.12 & 4.1x, 5 Server, Packet driver for UNIX Client, UnixWare 7.0, Linux, SCO Unix, MAC, QNX, Free BSD, Macintosh Mac OS 8.x/9.x

Pressfit PC/104 Connectors

High quality pressfit connectors for ISA and PCI bus to guarantee optimal connection and fit

Power Requirement

0.75 W (150 mA @ +5 V) fully functional

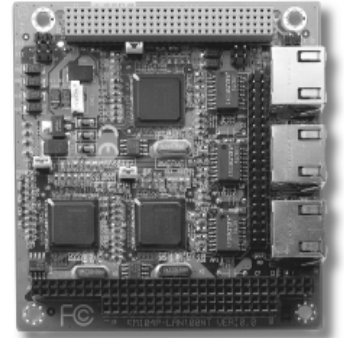
Ordering Information

Em104P-LAN100N

PC/104-Plus fast Ethernet module with Intel 82559

Em104P-LAN100NT

Triple port Intel 82559 Ethernet



Features

- 3x Intel 82559, 10/100 Mbps
- Full Duplex transfer mode
- Power saving and Wake-on-LAN

Specifications

Chipset

3x Intel 82559 (Em104p-LAN100NT)

Protocol / Performance

10 Mbps and 100 Mbps meet IEEE 802.3X

Boot ROM support

Up to 128 KB Flash Memory Boot-ROM

Indicator LEDs

2 LED on RJ-45 connector, additional 4-pin header for external LEDs

Connectors

RJ-45 interface connector 10-pin box-header for extension cable with RJ-45 connector with LED, 3-pin wake up LAN control line

Power Saving and Wake-up LAN

Advanced power saving mode when LAN function or wake-up function is not used, supports Link Change, Microsoft "Wake-up Frame" and AMD "Magic Packet" for WOL

OS Support

Microsoft Windows NT4.0, Microsoft Windows* 95, 98, 2000, XP, CE, Novel NetWare* 3.11, 3.12 & 4.1x, 5 Server, Packet driver for UNIX Client, UnixWare 7.0, Linux, SCO Unix, MAC, QNX, Free BSD, Macintosh Mac OS 8.x/9.x

Power Requirement

0.75 W (150 mA @ +5 V) fully functional

Ordering Information

Em104P-LAN100NT

PC/104-Plus triple port fast Ethernet module with three Intel 82559