

Power Supply

1U AC Input AT Type

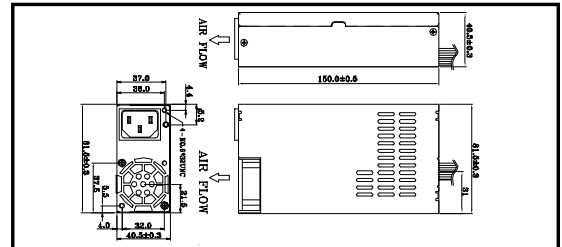
ACE-916A/AP

150W



Input Type	90 ~ 132VAC, 180 ~ 264VAC Auto Range (ACE-916A) 90 ~ 264VAC Full Range (ACE-916AP)				
Output Voltage	+5V	+12V	-5V	-12V	+24V
ACE-916A	15A(1A min)	10A(0.2A min)		0.3A	
ACE-916AP	16A(1A min)	6A(0.5A min)		0.3A	
Efficiency	70% (ACE-916A), 68% (ACE-916AP)				
Temperature	0 ~ 50°C (Operating), -20 ~ 80°C (Storage)				
MTBF(hrs)	100,000				
Output Connector	P8P9, FDD and 3 x HDD				
Dimensions	150 x 81.5 x 40.5 mm				

Dimensions

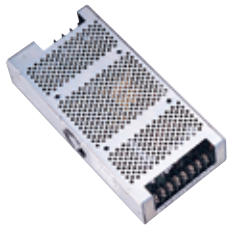


Ordering Information

Part No.	Description
ACE-916A-RS	150W AC-DC AT Power Supply
ACE-916AP-RS	150W AC-DC AT Power Supply, with PFC

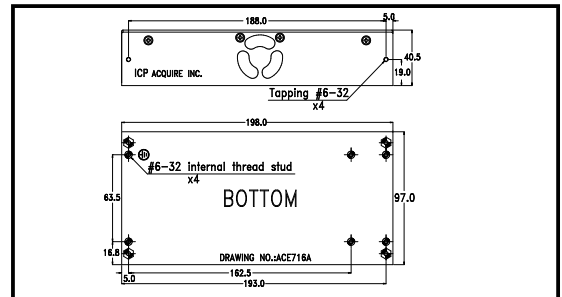
ACE-716A/AP

150W



Input Type	85 ~ 135VAC, 180 ~ 265VAC Auto Range (ACE-716A) 85 ~ 265VAC Full Range (ACE-716AP)				
Output Voltage	+5V	+12V	-5V	-12V	+24V
	18A (1A min)	4A	0.5A	1A	
Efficiency	75%				
Temperature	Operating : -20 ~ 70°C (50 ~ 70°C derating curve), Storage : -20 ~ 85°C				
MTBF(hrs)	149,000				
Output Connector	Optional cable				
Dimensions	198 x 97 x 40.5 mm				

Dimensions



Part No.	Description
ACE-716A-RS	150W AC-DC AT Power Supply
ACE-716AP-RS	150W AC-DC AT Power Supply, with PFC

Optional 1 AC Input Solution

PN: CB-643EC-RS
20 cm AC input cable with I/O connector and fuse



Optional 2 Embedded Solution

PN: CB-716EB-RS
30 cm DC cable to CPU card with 4-pin 12 V CPU, SATA and 2 x HDD connectors



Optional 3 ATX Backplane Solution

PN: CB-716BP-RS
30 cm DC cable to backplane with 20-pin ATX, HDD and SATA connectors



Optional 4 AT P8P9 Backplane Solution

PN: CB-716P8P9-RS
30 cm DC cable to backplane with 20-pin ATX, HDD and SATA connectors



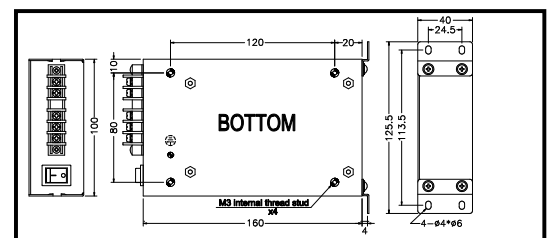
ACE-540A

40W



Input Type	85 ~ 264VAC Full Range				
Output Voltage	+5V	+12V	-5V	-12V	+24V
					1.7A
Efficiency	70%				
Temperature	Operating : -20 ~ 70°C (50 ~ 70°C derating curve), Storage : -40 ~ 85°C				
MTBF(hrs)	370,000				
Output Connector	N/A				
Dimensions	161 x 100 x 40 mm				

Dimensions



Part No.	Description
ACE-540A-RS	40W AC-DC AT Power Supply, only output +24V