

Output Specifications:

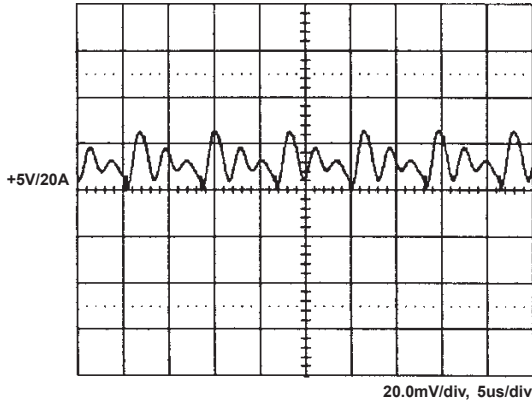
| MODEL NO. | OUTPUT RAIL | LOAD | | | VOLTAGE ACCURACY | RIPPLE NOISE | LINE REG. | LOAD REG. |
|------------|-------------|-------|-------|-------|------------------|--------------|-----------|-----------|
| | | MIN. | RATED | MAX. | | | | |
| SNP-Z106-M | +5V | 0A | 20A | 26A | +4.95V~+5.05V | 50mVpp | ±0.5% | ±1% |
| SNP-Z107-M | +12V | 0A | 9A | 11A | +11.88V~+12.12V | 100mVpp | ±0.5% | ±1% |
| SNP-Z108-M | +15V | 0A | 7A | 8.7A | +14.85V~+15.15V | 100mVpp | ±0.5% | ±1% |
| SNP-Z109-M | +24V | 0A | 4.5A | 5.4A | +23.76V~+24.24V | 100mVpp | ±0.5% | ±1% |
| SNP-Z10T-M | +48V | 0A | 2.1A | 2.7A | +47.52V~+48.48V | 150mVpp | ±0.5% | ±1% |
| SNP-Z101-M | +5V | 0.5A | 10A | 15A | +4.95V~+5.05V | 50mVpp | ±0.5% | ±1% |
| | +12V | 0.05A | 3A | 4.1A | +11.40V~+12.60V | 120mVpp | ±0.5% | ±5% |
| | -12V | 0A | 0.8A | 1.1A | -11.40V~-12.60V | 120mVpp | ±0.5% | ±5% |
| SNP-Z104-M | +5V | 0.5A | 10A | 15A | +4.95V~+5.05V | 50mVpp | ±0.5% | ±1% |
| | +15V | 0.05A | 2.5A | 4.1A | +14.25V~+15.75V | 150mVpp | ±0.5% | ±5% |
| | -15V | 0A | 0.8A | 1.1A | -14.25V~-15.75V | 150mVpp | ±0.5% | ±5% |
| SNP-Z10H-M | +28V | 0A | 3.8A | 4.65A | +27.72 ~+28.28V | 100mVpp | ±0.5% | ±1% |
| SNP-Z10K-M | +5V | 0.5A | 2.5A | 4A | +4.95V~+5.05V | 50mVpp | ±0.5% | ±1% |
| | +24V | 0.05A | 2.8A | 4A | +22.8V~+25.2V | 240mVpp | ±0.5% | ±5% |
| | +12V | 0A | 0.7A | 1A | +11.4V~+12.6V | 120mVpp | ±0.5% | ±5% |

Note:

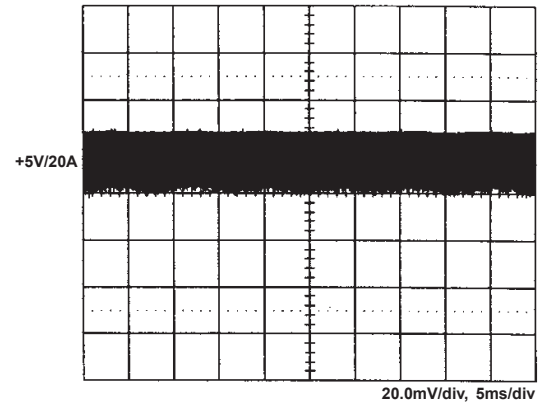
1. The total output current is rated load with free air convection and max. load with 18CFM of forced air flow over the unit.
2. At factory, in 60% rated load condition, each output is checked to be within voltage accuracy.
3. Line regulation is defined by changing ±10% of input voltage from nominal line at rated load.
4. Load regulation is defined by changing ±40% of measured output load from 60% rated load at another output set to 60% rated load.
5. Ripple & noise is measured by using 15MHz bandwidth limited oscilloscope and terminated each output with a 0.47uF capacitor and a 47u electrolytic capacitor at rated load and nominal line.
6. Hold up time is measured from the end of the last charging pulse to the time which the main output drops down to low limit of main output at rated load and nominal line.
7. Efficiency is measured at rated load and nominal line.

Performance for SNP-Z106-M:

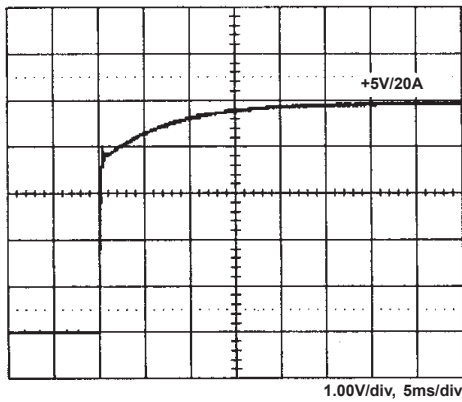
1. Switching frequency ripple



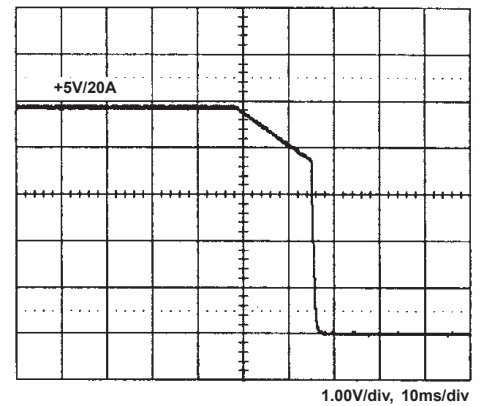
2. Line frequency ripple



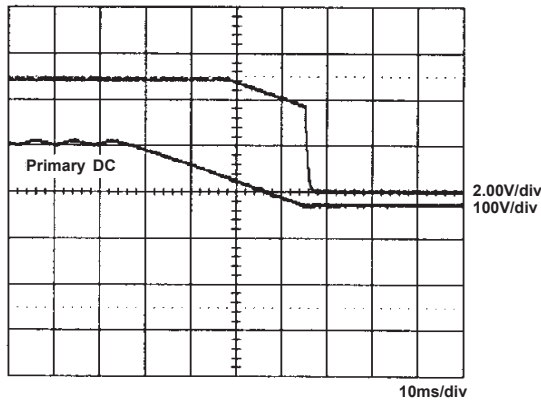
3. Output turn on wave form



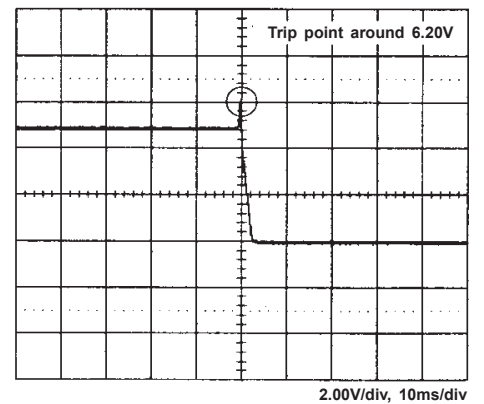
4. Output turn off wave form



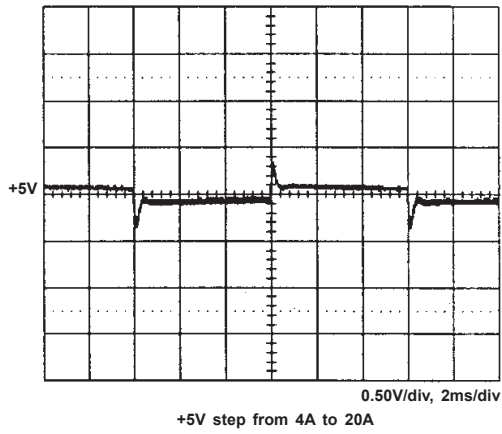
5. Hold-up time



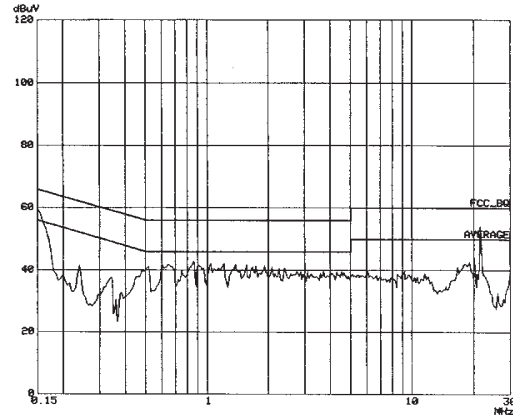
6. Over voltage protection



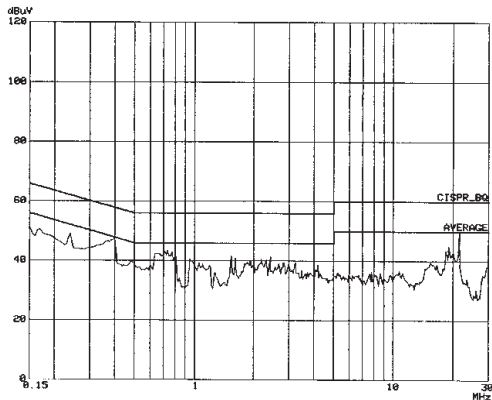
7. +5V step response



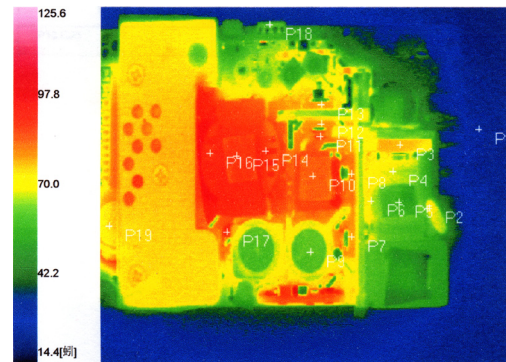
8. FCC B



9. CISPR 22 B



10. Thermal profile



Test condition:
M/N : SNP-Z106-M, Input : 244V
Output : 5V/20A, Ambient : 23.5°C