

PSII Type 1+1 Mini Redundant Power Supply

ATX12V

EFRP-2502

500+500 watts Output power
1+1 Redundant Configuration
PSII Mini Redundant Power



Dimensions: 150(W) x 85(H) x 200(D) mm

Features:

- ⦿ For AC 100V – 240V Full Range
- ⦿ Active Power Factor Correction
- ⦿ Compact size Module Design
- ⦿ Front panel LED to Indicate Power Status
- ⦿ Available for Vertical and Horizontal Type
- ⦿ Remote DC Sense on +5V and +3.3V
- ⦿ Power Fault Alarm Signals
- ⦿ Over Voltage Protection
- ⦿ Over Current Protection
- ⦿ Over Power Protection
- ⦿ Short Circuit Protection
- ⦿ MTBF >100,000 Hours

General Specifications:

- ⦿ Input Range: 100 to 240 VAC, +/-10%
- ⦿ Power Factor: 0.95 minimum
- ⦿ Efficiency: >65% minimum, at full load
- ⦿ Hold up Time: 18mS minimum, at full load
- ⦿ PSON (Remote ON/OFF): TTL compatible signal
- ⦿ Power Good: 100 to 500 ms, TTL compatible signal
- ⦿ Operating Temperature: 0 to 45°C
- ⦿ Operating Humidity: 20 to 90 %

Agency Requirements:

- ⦿ Harmonic: Meet EN61000-3-2 standards
- ⦿ EMI/RFI: CE, FCC class B and CISPR class B
- ⦿ Safety: UL, cUL, CB, TUV

Electrical Specifications:

Regulation, Ripple & Noise:

Output	+3.3V	+5V	+12V	-5V	-12V	5Vsb
Load Regulation	± 5%	± 5%	± 5%	± 10%	± 10%	± 5%
Cross Regulation	± 5%	± 5%	± 5%	± 10%	± 10%	± 5%
Line Regulation	± 1%	± 1%	± 1%	± 1%	± 1%	± 1%
Ripple & Noise	50mV	50mV	120mV	120mV	120mV	50mV

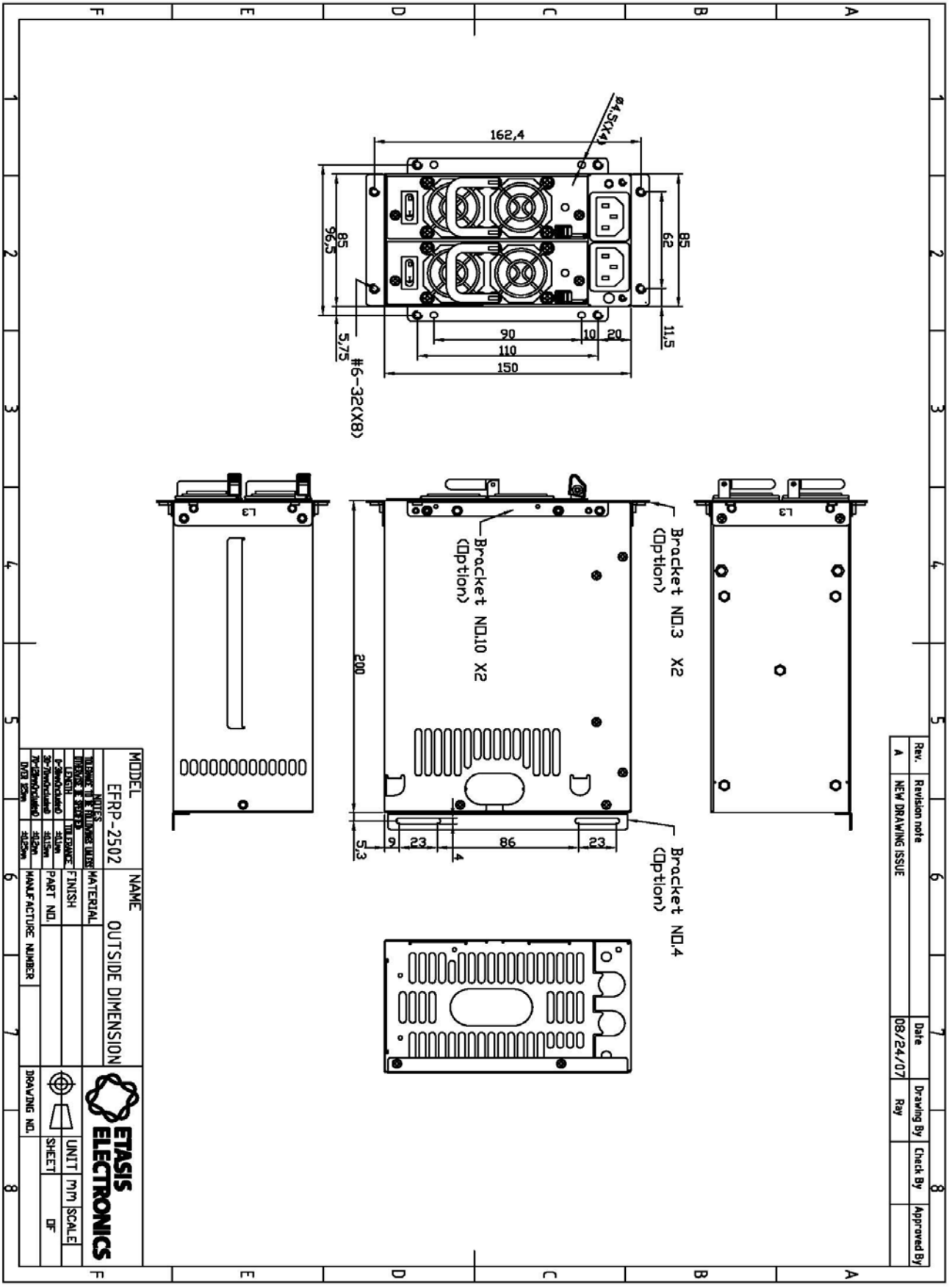
Input and Output Ratings:

Voltage	Input		Watt	Load	Output					
	Frequency	Current			+3.3V	+5V	+12V	-5V	-12V	5Vsb
100-240 VAC	47-63 Hz	9~ 4.5A	500W	Max Load	25A	35A	32A	0.5A	1.0A	2.5A
				Min Load	1A	3A	2A	0A	0A	0.1A

Note 1 : The +5 & +3.3 Volt total output shall not exceed 225W.

Note 2: The +5V, +3.3V & +12V total output shall not exceed 475W.

Note 3: Maximum continues total DC output power shall not exceed 500W.



Rev.	Revision note	Date	Drawn By	Check By	Approved By
A	NEW DRAWING ISSUE	08/24/07	Ray		

MODEL	NAME	OUTSIDE DIMENSION	
EFRP-2502			
NOTES	MATERIAL	FINISH	UNIT
TOLERANCE TO FOLLOWING UNLESS SPECIFIED			M/M SCALE
DRAWING			SHEET
DATE			OF
MANUFACTURE NUMBER			
DRAWING NO.			