

[Home](#) > [Products](#) > [IPC Panel PC](#)

PPC-17GSL

Intel® 945GSE Atom™ N270 Processor Mini-ITX Motherboard

SATA

GPIO

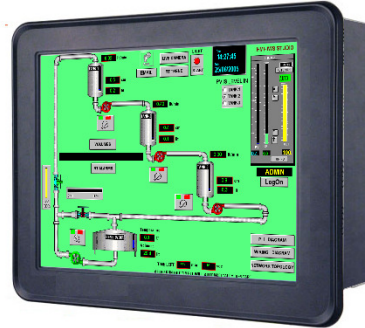
Fan
Fanless

Dual View

Dual
Gbit LAN

IP65

- IP65 protection on front bezel
- Onboard Intel FCBGA8 45nm Atom™ N270 Processor
- 17" LCD 4:3
- One 200-pin SO-DIMM up to 2GB Single Channel DDR2 533 SDRAM, non-ECC
- Intel® Graphics Media Accelerator 950
- Dual View
- Realtek® ALC888, 5.1Channel HD Audio
- Dual Realtek RTL8111C Gigabit LAN
- 1 PCI, 1 Mini PCI-E
- 7 COM, 4 USB 2.0



DOWNLOAD



[Product Spec \[PDF\]](#)

[Manual & Drivers](#)

 **ADOBE READER**



[Free Adobe Reader](#)

[Specifications](#)

System	
CPU	▶ Onboard Intel FCBGA8 45nm Atom N270 Processor
FSB	▶ 533MHz
BIOS	▶ Award 16Mb SPI BIOS
System Chipset	▶ Intel 945GSE + ICH7-M Chipset
I/O Chip	▶ Winbond W83627DHG-A
System Memory	▶ One 200-pin SODIMM up to 2GB Single Channel DDR2 533 SDRAM, non-ECC
SSD	▶ One CompactFlash Type I/II socket
Watchdog Timer	▶ Reset: 1 sec. to 255 min. and 1 sec. or 1 min./step
H/W Status Monitor	▶ Monitoring temperatures, voltages, and cooling fan status. Auto throttling control when CPU overheats
Expansion	▶ 1 PCI (PCI Rev. 2.3 compliant), 1 Mini PCI-E
TPM	▶ Optional, TPM1.2 (Infineon TPM chip 9635 TT 1.2)
Wake up on LAN or Ring	▶ LAN (PME/RPL)
Display	
Chipset	▶ Intel 945GSE integrated Graphics Media Accelerator 950
Display Memory	▶ Intel DVM T 3.0 supports 224MB video memory
Dual Display	▶ VGA D-SUB 15Pin Supports up to QXGA (2048 x 1536) LVDS 17" XGA(1024 x 768)
VGA	▶ On board GMA 950 supports CRT resolutions up to QXGA
Touch Screen	▶ 5 Wire resistive touch screen
Audio	
Audio Codec	▶ Realtek ALC888, 5.1 + 2 CH HD Audio
Audio Interface	▶ Mic-in, Line-in, Line-out
Audio Amplifier (W)	▶ Optional, TPA3005D2 Stereo 6 Watt
Ethernet	
LAN 1	▶ Realtek RTL8111C Gigabit LAN
LAN 2	▶ Realtek RTL8111C Gigabit LAN
Back Panel I/O Port	
Back Panel I/O Port	▶ 1 PS/2 Keyboard 1 PS/2 Mouse 1 VGA port 7 COM ports (2 COM Expansion Bracket) 2 RJ45 ports 4 USB 2.0/1.1 Audio I/O (3 jacks) 1 PCI 32Bit Slot
Mechanical & Environmental	
Power	▶ AC IN 110~240V
Operating Temperature	▶ 0 to 60°C (32 to 140°F)
Operating Humidity	▶ 0% to 90% relative humidity, non-condensing
Size (L x W)	▶ 374.6 (W) x 284 (H) x 68.4 (D) mm
Weight	▶ 8 Kg

Ordering Information

-
-
-

[<< back](#)