

MP-954GPS

User's Manual

Edition 1.1

2009/10/23



Copyright

Copyright 2009 all rights reserved. This document is copyrighted and all rights are reserved. The information in this document is subject to change without prior notice to make improvements to the products.

This document contains proprietary information and protected by copyright. No part of this document may be reproduced, copied, or translated in any form or any means without prior written permission of the manufacturer.

All trademarks and/or registered trademarks contains in this document are property of their respective owners.

Disclaimer

The company shall not be liable for any incidental or consequential damages resulting from the performance or use of this product.

The company does not issue a warranty of any kind, express or implied, including without limitation implied warranties of merchantability or fitness for a particular purpose.

The company has the right to revise the manual or include changes in the specifications of the product described within it at any time without notice and without obligation to notify any person of such revision or changes.

Trademark

All trademarks are the property of their respective holders.

Any questions please visit our website at <http://www.commell.com.tw>.

Packing List:

Hardware:

MP-954GPS Mini-PCI Card x1

Cable kit:

Com port cable (OALES-BKU2) x 2



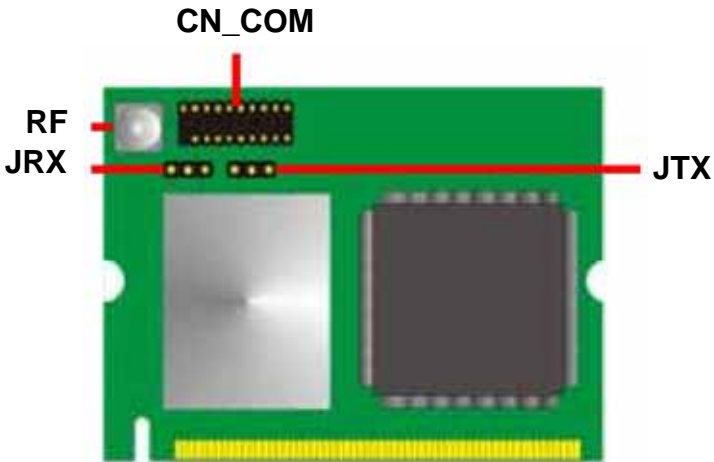
CD Content::

Drivers & User's Manual

1.0 <Product Specification>

General Specification	
Form Factor	Mini-PCI Type III B with 124-pin interface
Controller	OXFORD OXuPCI954
Features	Three 16C950 High performance UART channels
	First channel for GPS
GPS Chipset	SiRF Star III
GPS Features	Tracking Sensitivity: -159dBm
	Support NMEA 0183 and SiRF binary protocol
GPS Baud Rate	4,800 bps

1.1 <Connector Assignment>



Connector: CN_COM

Type: 20-pin (10x2 pitch=1.27x2.54mm) header

Pin	Description	Pin	Description
1	DCD1-	2	RX1-
3	TX1-	4	DTR1-
5	GND	6	DSR1-
7	RTS1-	8	CTS1-
9	RI1	10	NC
11	DCD2-	12	RX2-
13	TX2-	14	DTR2-
15	GND	16	DSR2-
17	RTS2-	18	CTS2-
19	RI2	20	NC

Connector: JRX

Type: 3-pin (3x1 pitch=2.0mm) header

Pin	Description	Pin	Description	Pin	Description
1	VCC	2	RX	3	GND

Connector: JTX

Type: 3-pin (3x1 pitch=2.0mm) header

Pin	Description	Pin	Description	Pin	Description
1	VBAT	2	TX	3	GND

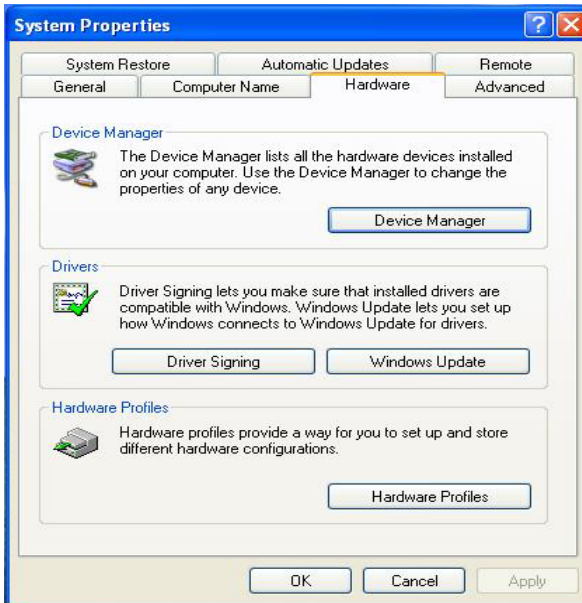
Connector: RF

Type: MCX connector

Pin	Description	Pin	Description
1	RF receive	2~5	RF GND

1.3 <Driver Setting>

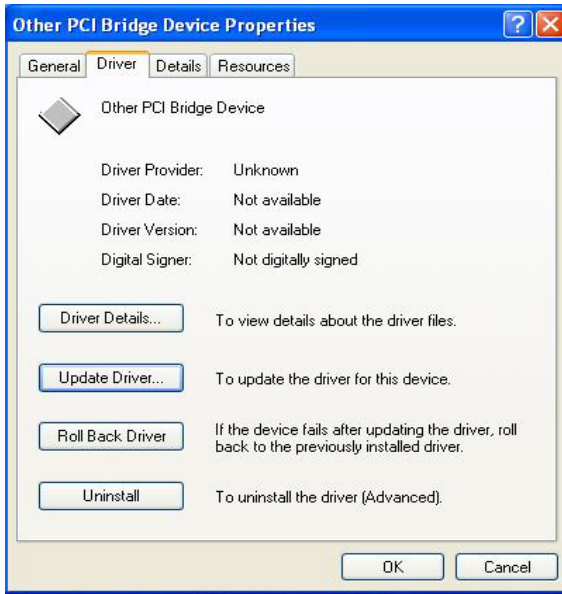
1. Copy the CD Driver folder to disk, Ex: C:\ , D:\ ...
2. Please choose “**Device Manager**”



3. You can see other devices “**Other PCI Bridge Device**” and “**PCI Serial Port**”



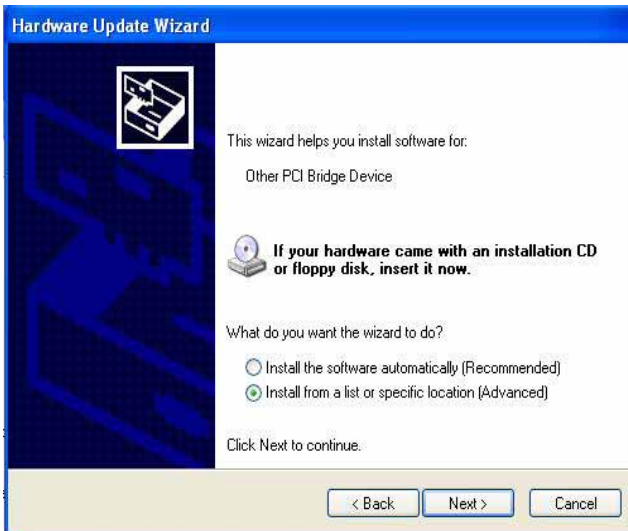
4. Please choose “**Other PCI Bridge Device**” then press **Update Driver**



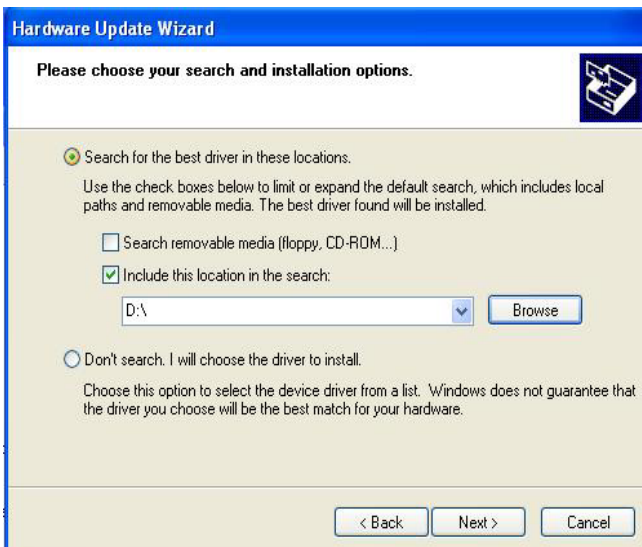
5. Please choose “**NO, not this time**”



6. Install software for "Other PCI Bridge Device" Please choose "Install from a list or specific location"



7. Please choose "Search for the best driver in these location" Check "Include this location in the search" then press "Browse"



8. Please select the file location

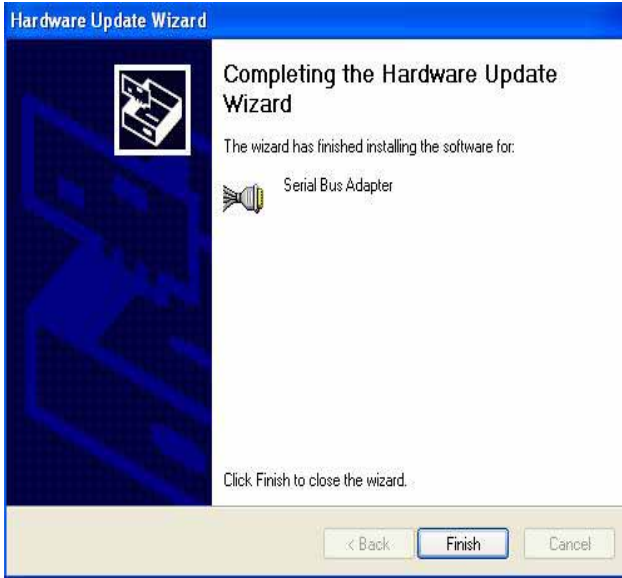
”C:\Driver\MP-954GPS\windows\2000&XP&Vista\32bit”



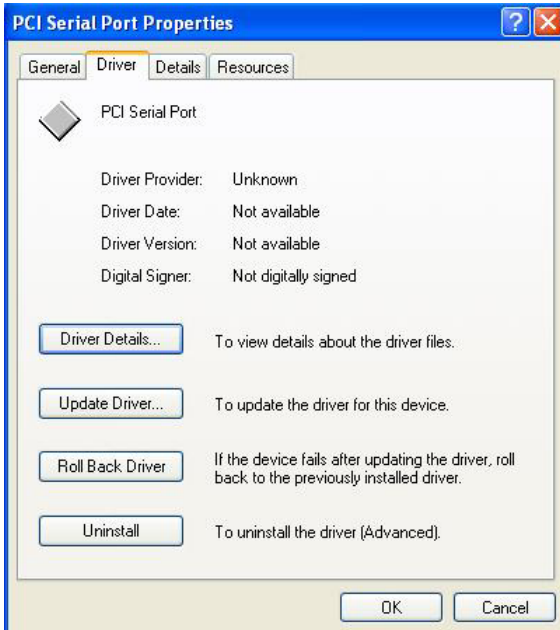
9. Hardware Installation ”Serial Bus Adapter” Press ”Continue Anyway”



10. Completing the hardware update wizard



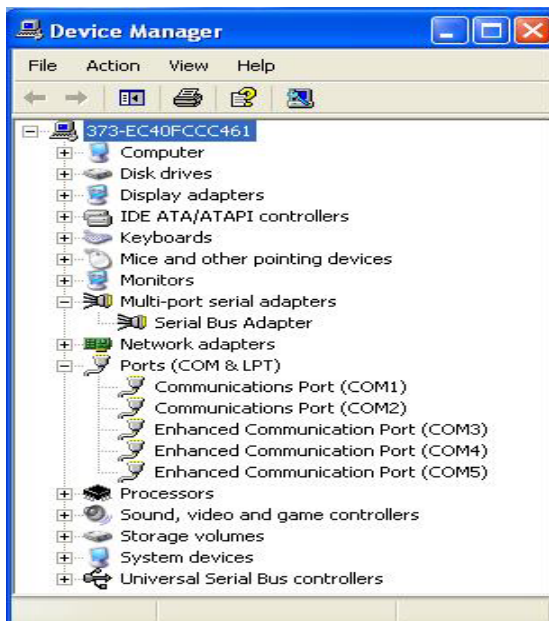
11. Please choose “**PCI Serial Port**” then press Update Driver step same as 5. ~ 9.



11. Please choose “16C95x Serial Port” then press Update Driver Step same as 5. ~ 9. installing for ”Enhanced Communication Port” then press “Continue Anyway”



12. Install finish



Contact Information

Any advice or comment about our products and service, or anything we can help you please don't hesitate to contact with us. We will do our best to support you for your products, projects and business.

Taiwan Commate Computer Inc.

Address	19F, No. 94, Sec. 1, Shin Tai Wu Rd., Shi Chih Taipei Hsien, Taiwan
TEL	+886-2-26963909
FAX	+886-2-26963911
Website	http://www.commell.com.tw
E-Mail	info@commell.com.tw (General Information) tech@commell.com.tw (Technical Support)

Commell is the trademark of Taiwan Commate Computer INC.