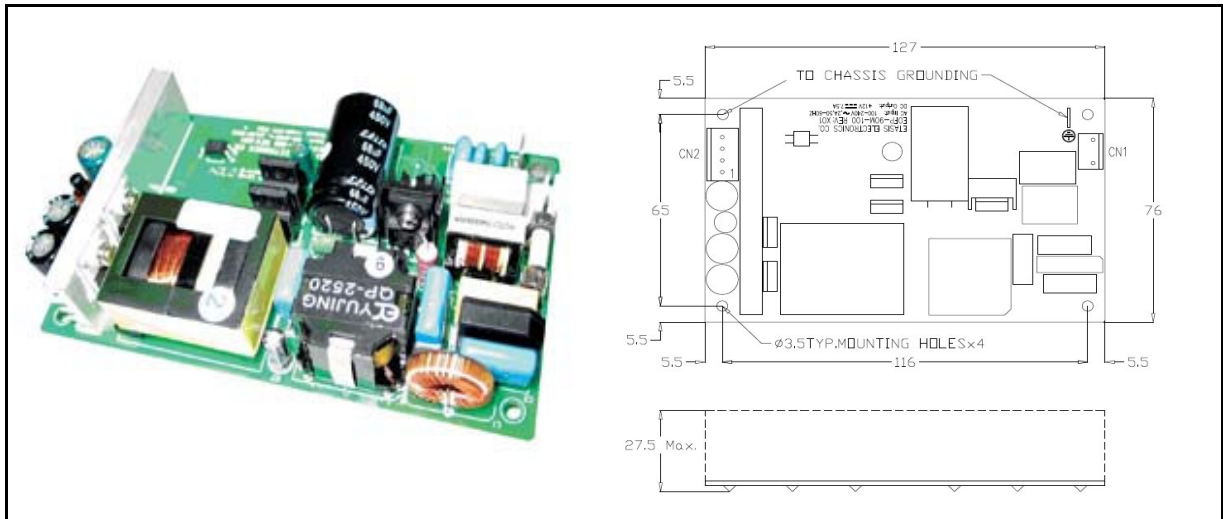


## 90W Single Output Open Frame Power Supply

- Universal AC input / Full range
- PF>0.95 at 115V ,PF>0.90 at 230V with full load
- Efficiency : > 85% at full load
- Active PFC (Power Factor Correction)
- Operating Relative Humidity : 20% to 85%
- Fanless 90W Output Power
- Over Circuit Protection
- PPC and IPC application



### General specifications:

- AC input voltage range..... AC 100-240V
- AC inrush current..... 80A/115VAC,120A/230VAC
- Leakage current..... 3.5mA
- Over voltage protection..... The power supply shall shut down into latch off mode when the output is over voltage.
- Short circuit protection..... The power supply shall shut down into latch off mode when the output is short circuit.
- Operating temperature..... 0~50°C
- Operating relative humidity..... 20% TO 85% RH
- Operating altitude..... 5,000 Feet above sea level

### ※EOFP-90M Series

Model No.	Output Voltage	Output Current	Ripple&Noise	Efficiency
EOFP-90M-100	12V	7.5A	120mV	85%
EOFP-90M-101	15V	6A	150mV	85%
EOFP-90M-102	18V	5A	180mV	85%
EOFP-90M-103	24V	3.7A	240mV	85%
EOFP-90M-104	28V	3.2A	280mV	85%
EOFP-90M-105	3.3V	27A	50mV	85%
EOFP-90M-106	5V	18A	50mV	85%