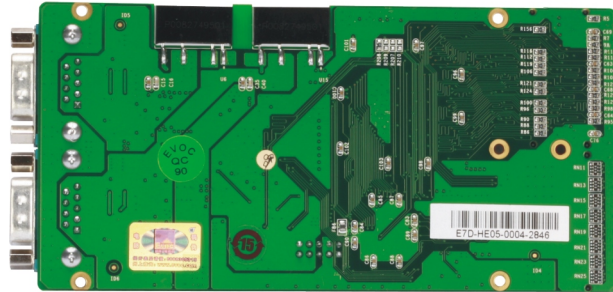
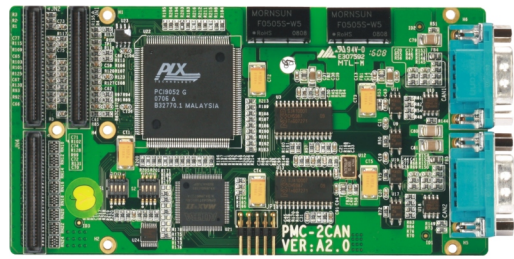


PMC-2CAN

Dual-Channel CAN bus PMC Expansion Module



1

Full-Size/Half-Size Slot CPU Cards

2

SBC/Motherboard/Modules

3

Embedded Box PC

4

Network Application Computers

5

Industrial PC

6

HMI

7

EVOC Rugged Series

8

MCC Series

9

Chassis

10

Data Acquisition Boards & Modules

11

Accessories



Features

- Compliant with 32-bit PMC bus interface
- PICMG 2.0 R3.0 CompactPCI specification compliant
- PICMG 2.1 R2.0 Hot Swap compliant
- PICMG 2.3 PMC specification compliant
- CAN2.0A and CAN2.0B Protocol compliant
- Supports transfer rate ranging from 10kbps to 1Mbps setup by software
- Supports 2500VDC photoelectric isolation
- Supports 256-byte FIFO

Specifications

System	
System Bus	32-bit PMC bus
Transfer Rate	Supports 10Kbps~1Mbps setup by software
Connector	2 x DB9 port
Standard	PICMG 2.0 R3.0, PICMG 2.1 R2.0, PICMG 2.3
Mechanical and Environmental	
Dimensions	149mm x 74mm
Operating Temperature	-40°C~70°C
Storage Temperature	-45°C~80°C
Operating Humidity	5%-95%, non-condensing

Operating System	
Power Supply	Windows XP
Power Consumption	WinCE, VxWorks, Linux

Related Product

Item	Typical Recommendation
CPCI System board	CPC-1712CLD2NA/CPC-1814CLD5NA/CPC-2811VD6N

Available Accessories

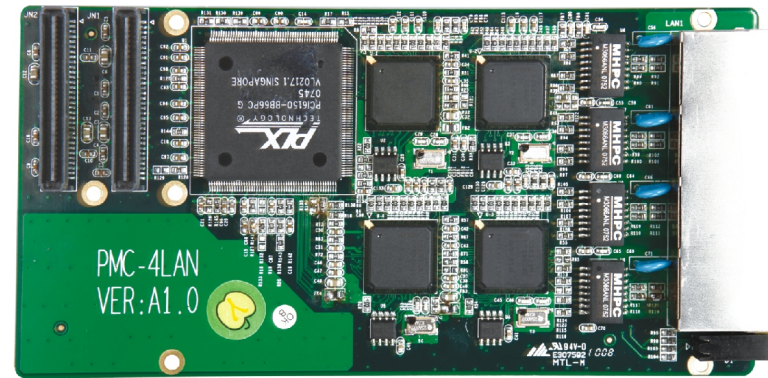
Part Number	Name	Description	Qty.
2413-008371	User Manual/Chinese/RoHS	PMC-2CAN/VER:A1	1
2192-004311	Driver CD/Protective film/RoHS	PMC-2CAN/VER:A1	1
2372-003100	Seal ring	EMC seal ring RP3688.661/RITTAL	1
2391-000201	Screw/RoHS	Pan head M3 x 5/GB-T818-1985/nickel plating/nylon patch	8
2391-006451	Copper hex Screws/RoHS	CH-M2.5-10-NI	2
2391-008001	Location hex Screws/RoHS	M2.5 x 4 x 16 x 8.5@2.4mm/screw without threads/please refer to the drawings for details	2

Ordering Information

Part Number	Model Number	Description
0090-001250	PMC-2CAN	Conversion board

PMC-4LAN

Four-Channel 100Mbps Ethernet PMC Expansion Module



Features

- Onboard 4 x Intel 82551QM 10/100Mbps Ethernet controller
- Supports 32-bit PMC bus
- PICMG 2.0 R3.0 CompactPCI specification compliant
- PICMG 2.1 R2.0 Hot Swap compliant
- PICMG 2.3 PMC specification compliant
- Supports LAN1+ LAN2, LAN3+LAN4 TRUNK Functions

Specifications

Ethernet	
System bus	32-bit PCI bus
Chipset	4 x Intel 82551QM Ethernet controller, 1 x PLX PCI6150 PCI to
Speed	PCI Bridge chip
Connector	10/100Mbps
Standard	4 x RJ45(with four status indicators) PICMG 2.0 R3.0, PICMG 2.1 R2.0, PICMG 2.3
Mechanical and Environmental	
Dimensions	149mm x 74mm
Operating Temperature	-40°C~70°C
Storage Temperature	-45°C~85°C
Operating Humidity	5%-95%, non-condensing

Related Product

Item	Typical Recommendation
CPCI System board	CPC-1712CLD2NA/CPC-1814CLD5NA/CPC-2811VD6N

Available Accessories

Part Number	Name	Description	Qty.
2192-004231	Driver CD/Protective film/RoHS	PMC-4LAN/VER:A0	1
2391-007601	Copper hex Screws/RoHS	M2.5 x 13/CH-M2.5-13-Ni/nickle plating	2
2413-008351	User Manual/Chinese/RoHS	PMC-4LAN/VER:A1	1

Ordering Information

Part Number	Model Number	Description
0090-001230	PMC-4LAN	(Y/F)PMC Modules

1

Full-Size/Half-Size Slot CPU Cards

2

SBC/Motherboard/Modules

3

Embedded Box PC

4

Network Application Computers

5

Industrial PC

6

HMI

7

EVOC Rugged Series

8

MCC Series

9

Chassis

10

Data Acquisition Boards & Modules

11

Accessories