

ETX-742E



ETX

Intel® Atom™ N450 ETX CPU Module



Features

- **Fanless Design**
- ETX 3.0 w/ SATA Connectors
- Soldered Onboard Intel® Atom™ N450 Processor
- Single Channel 18-bit LVDS, and Analog RGB
- **Wide Range Operating Temp.: -40 ~ 85°C**

System

CPU	Soldered onboard Intel® Atom™ N450 1.6GHz processor
Memory	1 x 200-pin DDR2 SO-DIMM Socket, supporting 667MHz SDRAM up to 2GB
Chipset	Intel® ICH8M
BIOS	AMI PnP Flash BIOS
Watchdog Timer	1~255 levels reset

I/O

I/O Chip	Winbond W83627HG
Serial Port	2 x COM ports
Parallel Port	SPP/EPP/ECP mode
USB Port	4 x USB 2.0 ports
KB/MS	PS/2 interface for keyboard and mouse
Expansion Bus	PCI (4 x PCI masters) and ISA bus
Storage	1 x Ultra ATA, supporting 2 IDE devices 2 x Serial ATA ports with 300MB/s HDD transfer rate
Ethernet Chipset	1 x Realtek 8103EL PCIe 10/100Base-T Ethernet controller
Audio Interface	Realtek ALC888 7.1 Channel HD Audio Codec, Mic-in/ Line-in/Line-out

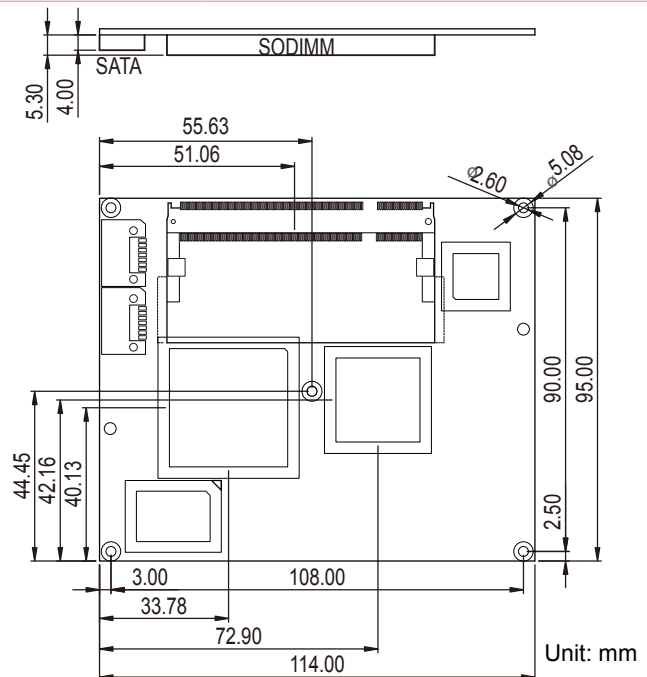
Display

Graphics Chipset	Integrated Intel® Graphics Media Accelerator 3150
Graphics Interface	Analog RGB supports up to 1400 x 1050 @60Hz LCD: Single channel 18-bit LVDS, up to 1280 x 800 or 1366 x 768

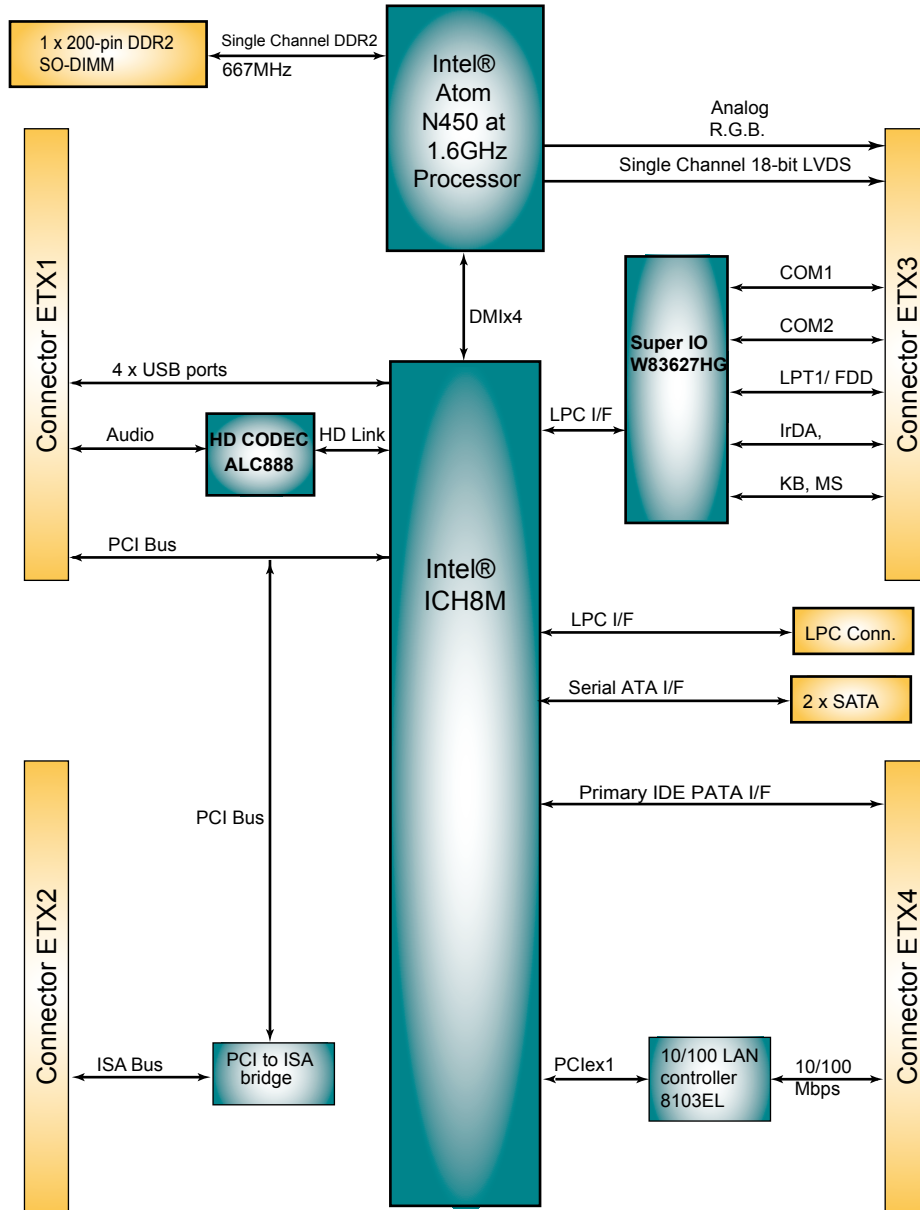
Mechanical & Environmental

Power Requirement	+5V, 5VSB
Power Consumption	2.19A@+5.03V (Typical)
Operating Temp.	-40 ~ 85°C (-40 ~ 185°F)
Operating Humidity	0 ~ 90% (non-condensing)
Dimension (L x W)	114 x 95 mm (4.5" x 3.7")

Dimensions



Block Diagram



Ordering Information

ETX-742E	Intel® Atom™ N450 1.6GHz ETX CPU module	
HS-0742-F1	Heat spreader (114 x 95 x 18 mm)	
PBE-1000 R2.1	ETX® evaluation board in ATX form factor	See Appendix
CBK-05-1000-00	Cable kit for PBE-1000 R2.1 1 x FDD cable 3 x COM port cables 1 x USB cable 2 x IDE cables 1 x TV-out cable	