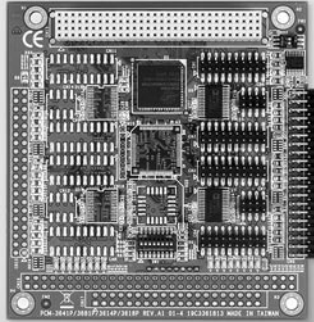


PCM-3614I/3618I PCM-3641I/3642I

4/8-port RS-232/422/485
PCI-104 Module

4/8-port RS-232 PCI-104
Module



PCM-3614I



Features

- Automatic RS-485 data flow control
- Shared IRQ settings for each port
- LED indicators: TX, RX
- Standard PC ports: COM1, COM2, COM3, COM4 compatible
- Powerful and easy-to-use utility (ICOM Tools)
- Supports Windows® 2000/XP/Vista

Specifications

General

- **Card Interface** PCI-104
- **Connectors** PCM-3614I: 1 x 40-pin box header
PCM-3618I: 2 x 40-pin box header
- **Ports** PCM-3614I: 4
PCM-3618I: 8
- **Power Consumption** +5 V @ 450 mA

Communications

- **Data Bits** 5, 6, 7, 8
- **Data Signals** RS-422: TxD+, TxD-, RxD+, RxD-, CTS+, CTS-, RTS+, RTS-
RS-485: DATA+, DATA-, GND
RS-232: TxD, RxD, RTS, CTS, DTR, DSR, DCD, RI, GND
- **IRQ** 3, 4, 5, 6, 7, 9, 10, 11, 12, 15
- **Parity** None, even and odd
- **Speed** 50 bps ~ 921.6 kbps
- **Stop Bits** 1, 1.5, 2

Protection

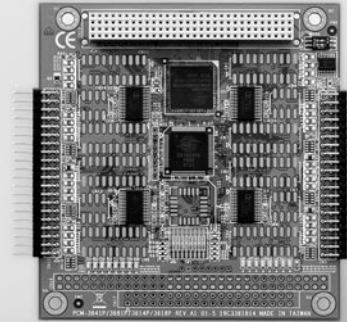
- **EFT Protection** 1,000 V_{DC}
- **Termination Resistor** 120

Environment

- **Operating Humidity** 0 ~ 90 % RH
- **Operating Temperature** 0 ~ 65° C (32 ~ 149° F)
- **Storage Temperature** -25 ~ 80° C (-13 ~ 176° F)

Ordering Information

- **PCM-3614I** 4-port RS-232/422/485 PCI-104 Module
- **PCM-3618I** 8-port RS-232/422/485 PCI-104 Module



PCM-3642I



Features

- Transmission speeds up to 460 kbps
- Shared IRQ settings for each port
- Standard PC ports: COM1, COM2, COM3, COM4 compatible
- Powerful and easy-to-use utility (ICOM Tools)
- Supports Windows® 2000/XP/Vista

Specifications

General

- **Card Interface** PCI-104
- **Connectors** PCM-3641I: 1 x 40-pin box header
PCM-3642I: 2 x 40-pin box header
- **Ports** PCM-3641I: 4
PCM-3642I: 8
- **Power Consumption** +5 V @ 250 mA (max.)

Communications

- **Data Bits** 5, 6, 7, 8
- **Data Signals** TxD, RxD, RTS, CTS, DTR, DSR, DCD, RI, GND
- **IRQ** 3, 4, 5, 6, 7, 9, 10, 11, 12, 15
- **Parity** None, even and odd
- **Speed** 50 bps ~ 460.3 kbps
- **Stop Bits** 1, 1.5, 2

Protection

- **EFT Protection** 1,000 V_{DC}
- **Termination Resistor** 120 Ω

Environment

- **Operating Humidity** 0 ~ 90 % RH
- **Operating Temperature** 0 ~ 65° C (32 ~ 149° F) (IEC-68-1-1, 2)
- **Storage Temperature** -25 ~ 80° C (-13 ~ 176° F)

Ordering Information

- **PCM-3641I** 4-port RS-232 PCI-104 Module
- **PCM-3642I** 8-port RS-232 PCI-104 Module