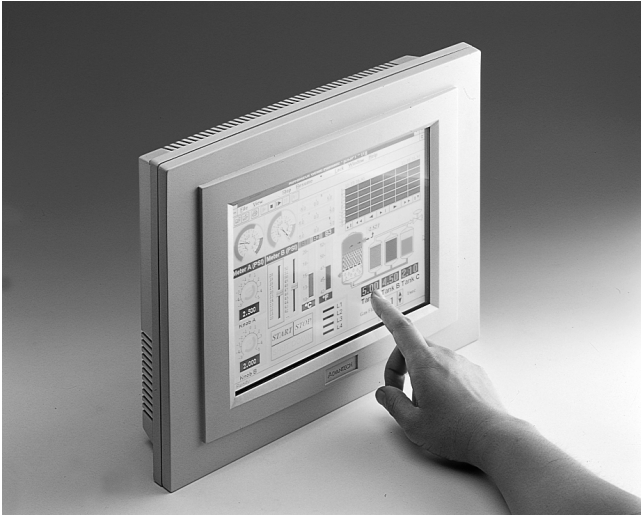


PPC-100

5x86-133 Panel PC with 10.4" TFT/DSTN LCD Display

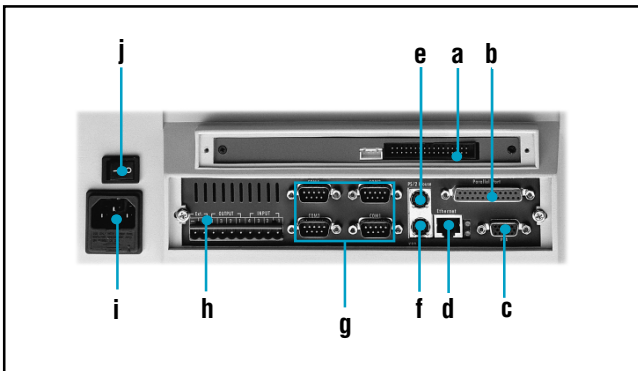


Introduction

The PPC-100 Panel PC is a super slim PC for space critical applications. The PPC-100 provides all the functionality of a desktop PC, plus a high brightness 10.4", 640 x 480 color TFT/DSTN LCD for display. The PPC-100 can be installed within a panel mount, wallmount, swing arm or stand.

Complete I/O Ports

- **FDD:** Supports 1.2/1.44/2.88 MB external floppy disk drive
- **Ethernet:** NE2000 compatible, 10Base-T interface
- **Serial ports:** RS-232 x 3, RS-232/422/485 x 1 (16C550 UART)
- **Parallel port:** One SPP/EPP/ECP port
- **Keyboard port:** PS/2 interface
- **Mouse port:** PS/2 interface
- **VGA:** Supports simultaneous CRT displays



- a. FDD port
- b. Parallel port
- c. VGA port
- d. Ethernet port
- e. PS/2 mouse connector
- f. Keyboard connector
- g. 4 COM ports
- h. 4 digital input/ 4 digital output
- i. AC inlet
- j. Power switch



Specifications

- **Processor:** 5x86-133 CPU
- **DRAM:** One 72-pin SIMM socket, up to 32 MB
- **HDD:** EIDE interface, 2.5" type
- **SSD:** Built-in 512 KB Flash memory (optional)
- **Battery:** Lithium battery for CMOS backup
- **Watchdog timer:** 1.6 sec.
- **Housing:** Fire-resistant plastic, front panel meets IP 65
- **Cooling system:** One 16 CFM fan on rear panel
- **Dimensions (W x H x D):** 342 x 265 x 61.5 mm (13.5" x 10.4" x 2.4")
- **Weight:** 2.7 kg (5.9 lbs)

LCD Display

Model	PPC-100T	PPC-100S
LCD type	10.4" color TFT	10.4" color DSTN
Resolution/colors	640 x 480 @ 256 K	640 x 480 @ 64 K
Pixel Pitch (mm)	0.33 x 0.33	0.33 x 0.33
Luminance (cd/m ²)	250	130
Viewing angle	90°	90°
VR control	N/A	Contrast
Simultaneous mode	Yes	Yes
LCD MTBF	50,000 hours	
Backlight MTBF	20,000 hours	

Power Supply

- **Output rating:** 50 W (max.)
- **Input voltage:** 90 ~ 240 V_{AC} @ 50/60 Hz, autoranging
- **Output voltage:** +5 V @ 4.5 A, +12 V @ 2 A, -12 V @ 0.3 A
- **MTBF:** 50,000 hrs
- **Safety:** UL/CSA/TÜV approved

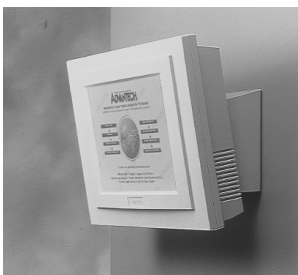
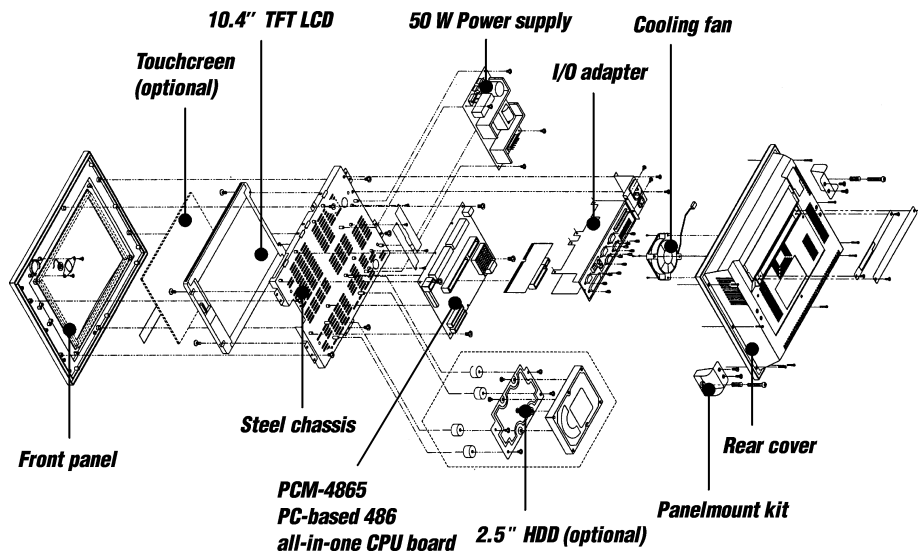
Touchscreen (optional)

- **Type:** Analog resistive, continuous resolution
- **Light transmission:** 75%
- **Controller:** RS-232 interface
- **Software driver:** Supports both DOS and Windows
- **Lifetime:** 30 million touches

Environmental Specifications

- **Operating temperature:** 32 ~ 113°F (0 ~ 45°C)
- **Relative humidity:** 10 ~ 95% @ 40° C, non-condensing
- **Shock (operation):** 10 G peak acceleration (11 ms duration)
- **EMI:** FCC Class B approved
- **CE approved**
- **Front panel meets NEMA 4 / IP 65**

Exploded Diagram



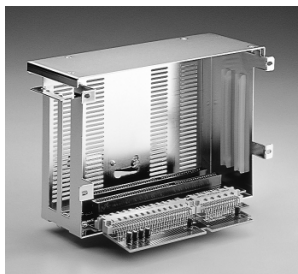
Wall mount



Desktop stand



Desktop swingarm



Expansion kit

Ordering Information

- PPC-100T**
Panel PC with 10.4" TFT LCD display
 - PPC-100T-RT**
PPC-100T with resistive touchscreen
 - PPC-100T-DC**
PPC-100T with 24 V_{DC} power
 - PPC-100T-DC-RT**
PPC-100T with 24 V_{DC} power and resistive touchscreen
 - PPC-100S**
Panel PC with 10.4" DSTN LCD display
 - PPC-100S-RT**
PPC-100S with resistive touchscreen
- * NS 5x86-133 CPU, DRAM and 2.5" HDD are available as optional items

Optional Peripherals

- PPC-100 STAND**
Stand kit for the PPC-100/102 series
- PPC-100 SWINARM**
Swing arm kit for the PPC-100/102 series
- PPC-100 WALL-MT**
Wall mount kit for the PPC-100/102 series
- PPC-EXP-100**
Expansion kit for two 2 layer ISA slots