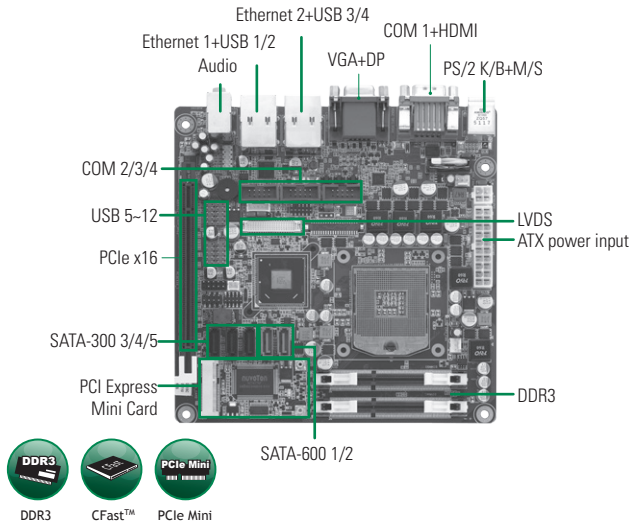


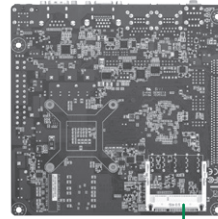
# MANO860

Socket G2 Intel® Quad/Dual Core™ i7/ i5/ i3/ Celeron® Mini ITX SBC with Intel® QM67 PCH, DisplayPort/HDMI/VGA/LVDS, SATA-600, Dual LANs and RAID



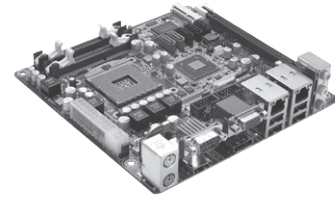
## Features

- Socket G2 (rPGA 988B) 2nd Generation Intel® Quad/ Dual Core™ i7/i5/ i3/ Celeron® processors
- 2 DDR3-1066/1333 MHz, max. up to 16 GB
- PCIe x16 Gen. 2 supported
- SATA-600 with RAID 0/1/5/10 supported
- CFast™ supported
- iAMT supported
- TPM supported
- Display: DisplayPort/HDMI/VGA/LVDS



▲ Rear view

CFast



▲ Side view

## System

CPU	Socket G2 (rPGA 988B) for 2nd Generation Intel® Core™ i7/ i5/ i3/ Celeron® processors
System Memory	2 x 204-pin SO-DIMM support DDR3-1066/1333 max. up to 16 GB
Chipset	Intel® QM67 PCH
BIOS	AMI UEFI BIOS
SSD	1 x CFast™
Watchdog Timer	255 levels, 1~255 sec.
Expansion Interface	1 x PCIe x16 Gen. 2 1 x PCI Express Mini Card
Battery	Lithium 3 V/ 220 mAh
Power Requirements	+12V @ 4.86A, +5V @ 1.28A, +3.3V @ 1.05A, +5VSB @ 0.36A, -12V @ 0.41A
Size	170 x 170 mm
Board Thickness	1.6 mm
Temperature	0° ~ +60°C (32°F ~ 140°F), operation
Operation Humidity	10% ~ 95% relative humidity, non-condensing

## I/O

MIO	1 x PS/2 keyboard 1 x PS/2 mouse 4 x RS-232 (COM 2/3/4); with +5V/+12V powered
SATA	2 x SATA-600 & 3 x SATA-300 with RAID 0/1/5/10
Hardware Monitoring	Detect CPU/system temperature, voltage and support Smart fan control
Ethernet	1st port as 10/100/1000 Mbps supports Wake-on-LAN, PXE Boot ROM with Intel® 82579LM 2nd port as 10/100/1000 Mbps supports Wake-on-LAN, PXE Boot ROM with Intel® 82583V
Audio	HD Codec audio as MIC-in/Line-in/Line-out speaker-out with Realtek ALC892
USB	12 x USB 2.0 port
TPM	Infineon SLB9625 for trusted platform
SMBus	System Management Bus for advanced monitoring/control
Digital I/O	8 channels (4-IN & 4-OUT)

## Display

Chipset	Intel® HD Graphics 2000/3000
Memory Size	1.7 GB
Display Interface	1 x DP 1 x HDMI 1 x LVDS 1 x VGA

## Packing List

User's manual/utility CD, SATA cable, I/O bracket

## Ordering Information

<b>Standard</b>	
MANO860PHGGA (P/N: E38M860100)	Socket G2 Mini ITX SBC with Intel® Core™ i7/ i5/ i3, VGA/ DisplayPort/HDMI/LVDS, 2 10/100/1000Mbps Ethernet, HD audio, 4 COM, 5 SATA and CFast™

# Mouser Electronics

Authorized Distributor

Click to View Pricing, Inventory, Delivery & Lifecycle Information:

[Axiomtek:](#)

[MANO860PHGGA](#)