

[Home](#) > [Products](#) > [IPC Panel PC](#)

## PPC-121GSL

Intel® 945GSE Atom™ N270 Processor Mini-ITX Motherboard

SATA

GPIO

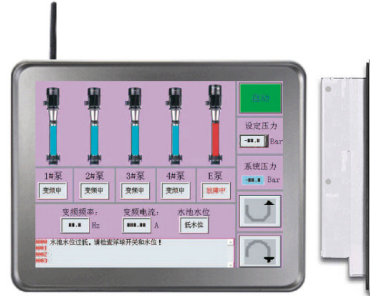
Fan  
Fanless

Dual View

Dual  
Gbit LAN

IP65

- IP65 protection on front bezel
- Onboard Intel FCBGA8 45nm Atom™ N270 Processor
- 10.4" LCD
- One 200-pin SO-DIMM up to 2GB Single Channel DDR2 533 SDRAM, non-ECC
- Intel® Graphics Media Accelerator 950
- Dual View
- Realtek® ALC888, 5.1Channel HD Audio
- Dual Realtek RTL8111C Gigabit LAN
- 1 PCI, 1 Mini PCI-E
- 3 COM, 4 USB 2.0



DOWNLOAD



[Product Spec \[PDF\]](#)

[Manual & Drivers](#)

ADOBE READER



[Free Adobe Reader](#)

### Specifications

System	
CPU	▶ Onboard Intel FCBGA8 45nm Atom N270 Processor
FSB	▶ 533MHz
BIOS	▶ Award 16Mb SPI BIOS
System Chipset	▶ Intel 945GSE + ICH7-M Chipset
I/O Chip	▶ Winbond W83627DHG-A
System Memory	▶ One 200-pin SODIMM up to 2GB Single Channel DDR2 533 SDRAM, non-ECC
SSD	▶ One CompactFlash Type I/II socket
Watchdog Timer	▶ Reset: 1 sec. to 255 min. and 1 sec. or 1 min./step
H/W Status Monitor	▶ Monitoring temperatures, voltages, and cooling fan status. Auto throttling control when CPU overheats
Expansion	▶ 1 PCI (PCI Rev. 2.3 compliant), 1 Mini PCI-E
TPM	▶ Optional, TPM1.2 (Infineon TPM chip 9635 TT 1.2)
Wake up on LAN or Ring	▶ LAN (PME/RPL)
Display	
Chipset	▶ Intel 945GSE integrated Graphics Media Accelerator 950
Display Memory	▶ Intel DVMT 3.0 supports 224MB video memory
Dual Display	▶ VGA D-SUB 15Pin Supports up to QXGA (2048 x 1536) LVDS 10.4" SVGA(800 x 600)
VGA	▶ On board GMA 950 supports CRT resolutions up to QXGA
Touch Screen	▶ 5 Wire resistive touch screen
Audio	
Audio Codec	▶ Realtek ALC888, 5.1 + 2 CH HD Audio
Audio Interface	▶ Mic-in, Line-in, Line-out
Audio Amplifier (W)	▶ Optional, TPA3005D2 Stereo 6 Watt
Ethernet	
LAN 1	▶ Realtek RTL8111C Gigabit LAN
LAN 2	▶ Realtek RTL8111C Gigabit LAN
Back Panel I/O Port	
Back Panel I/O Port	▶ 1 PS/2 Keyboard 1 PS/2 Mouse 1 VGA port 3 COM ports 2 RJ45 ports 4 USB 2.0/1.1 Audio I/O (3 jacks)
Mechanical & Environmental	
Power	▶ DC Jack +12V Power input / Adapter 84W
Operating Temperature	▶ 0 to 60°C (32 to 140°F)
Operating Humidity	▶ 0% to 90% relative humidity, non-condensing
Size (L x W)	▶ 304 (W) x 234 (H) x 57.2 (D) mm
Weight	▶ 4.3 Kg)
Ordering Information	
	•
	•
	•

<< back

Copyright © 2010 BPS • All rights reserved.