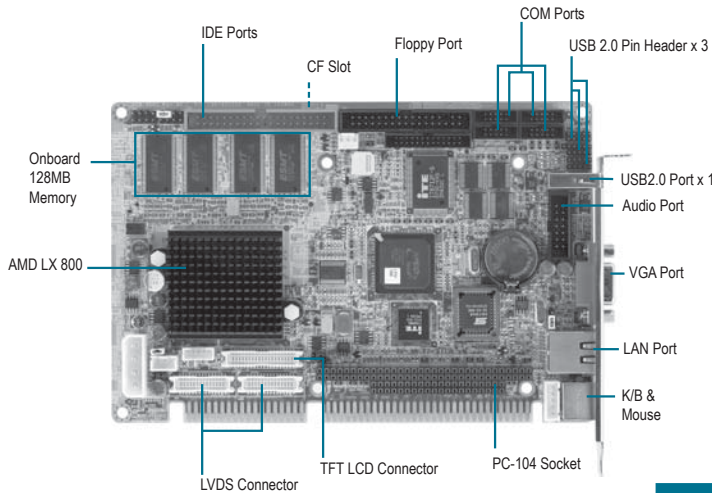


AMD LX800 ISA Half-size SBC

02

Half-size SBCs - ISA



Features

- **AMD LX800 Processor**
- **On Board 128MB DDR400 Memory**
- **Integrated 2D/3D Graphics Accelerator, VGA Support CRT/TFT**
- **10/100/1000Base-TX Ethernet x 1 (10/100 & GbE Optional)**
- **USB 2.0 x 4/ RS-232 x 3; RS-232/422/485 x 1/ Parallel x 1/ IrDA Port x 1**
- **Ultra ATA 33 x 1**
- **Digital I/O; AC97; PC/104**
- **CompactFlash™ Type II Socket**
- **Watchdog Function 1~255 Sec.**



Specifications

| System | |
|---|--|
| Form Factor | ISA |
| Processor | AMD LX800 |
| System Memory | On board 128MB DDR400 Memory |
| Chipset | AMD LX800 + CS 5536 |
| Ethernet | PCI 10/100Mb or 10/100/1000Mb LAN x 1 (optional), RJ-45 x 1, Realtek 8100C/8110S controller optional |
| BIOS | Award Plug & Play FWH BIOS – 8Mb ROM |
| IDE Interface | ATA-33 x 1 channel |
| SSD | CFD Type II Connector x 1 |
| Expansion Interface | ISA / PC-104 |
| Watchdog Timer | 1~255 step, can be set with software on Super I/O |
| RTC | Internal RTC |
| Battery | Lithium Battery |
| Power Requirement | AT 5V, 12V |
| Operating Temperature | 0°C ~ 60°C |
| Board Size | 7.3" (L) x 4.8" (W) (185 mm x 121 mm) |
| Gross Weight | 0.71 lb (0.3 kg) |
| MTBF (Hours) | — |
| Power Consumption (Typical) | — |
| Display | |
| Supports CRT and LCD simultaneous display | |
| VGA Controller | LX800 |
| Memory | Shared memory up to 16M |
| Resolutions | 16001200@32bpp at 100MHz for CRT 16001200@24bpp for LCD |
| LCD Interface | Up to 24 bit, LVDS/TTL LCD Support |
| I/O | |
| CS 5536 | |
| Serial Port | COM port x 4: (Internal Pin Header x 4) COM 1, COM 3, COM 4: RS-232 COM 2: RS-232/422/485 |
| Parallel Port | Supports SPP/ EPP/ ECP mode |
| Universal Serial Bus | USB 2.0 port x 4 5 x 1 pin header x 3 Type A Connector x 1 |
| Floppy Drive Interface | Standard FDD port x 1, support up to one floppy devices |
| Keyboard and Mouse | Mini-DIN PS/2 K/B and Mouse connector x 1 Internal keyboard pin header x 1 |
| IrDA | Supports One IrDA header |
| Audio | Realtek ALC203 AC97 Codec / MIC-in / Line-in / Line-out / CD-in |

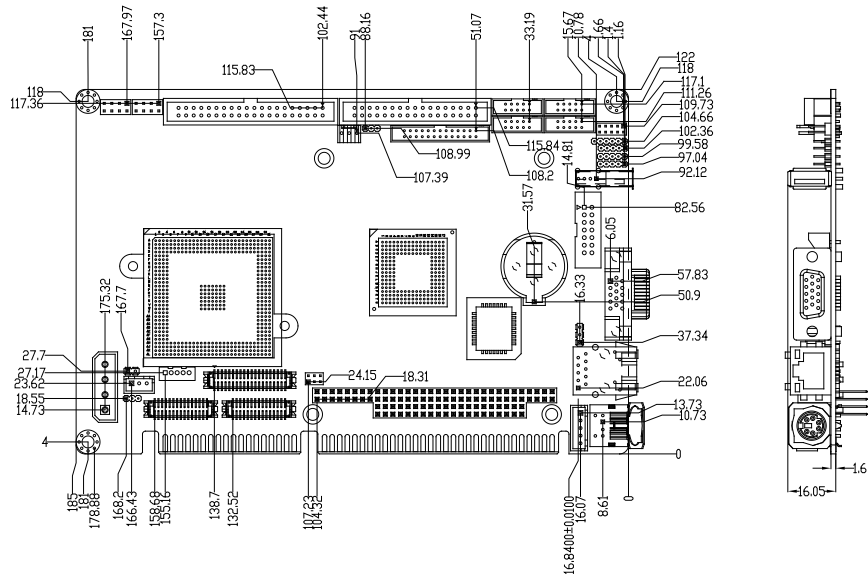
Packing List

- **1701340704**
Flat Cable, 34P, 70cm, GRAY for FDD
- **1701400453**
Cable, 40P 2.54mm IDC W/Nose W/Fold, 40P 2.54mm IDC W/Nose W/Fold, 45cm, Blue ATA-100
- **1700060192**
Cable, 6P-6P-6P, 19cm, IVORY PS2/KB&Mouse
- **1709140302**
Cable, Phone Jack x 3, to 14P, 2.54mm Housing, DB9P(M) 10P 2.0mm IDC, 4P 2.54mm Housing, 30 cm W/BRACKET
- **1701200301**
Flat Cable, 9P DB9P MALE, 10P 2.0mm Pitch x 2, 30cm, IDC No Fold, W/BRACKET
- **170910020A**
USB Cable, 22cm 2.54mm, W/Bracket
- **1703030501**
Wire, 3P 2.5mm Housing, 3P 2.5mm Housing, 50cm
- **1701010302**
Flat Cable, 1S/1P, D-SUB W/BRACKET 26-25 10-9 2P
- **Quick Installation Guide**
- **Utility CD**
- **HSB-8001**

Ordering Information

- **TF-HSB-8001-A10-VE**
Half-Size ISA CPU Card, AMD LX800,VGA,1 LAN, 4 USB, CF, PC/104, Digital I/O, AC97, AT, Rev.A1.0
- **TF-HSB-8001-A10-VG**
Half-Size ISA CPU Card, AMD LX800,VGA,1 Gbe, 4 USB, CF, PC/104, Digital I/O, AC97, AT, Rev.A1.0

Dimension Unit: mm



Passive Backplane Options

| P/N | Description | Master Interface | Slots (PCI/ISA/PICMG) | Power Connector, ATX Extend Function |
|-----------------|---|------------------|-----------------------|--------------------------------------|
| TF-BP-204SI-A13 | Wallmount, ISA 4-slot Backplane, 4 ISA Single Segment, AT, Rev.A1.3 | ISA | (0/4/0) | AT |
| TF-BP-206SI-A11 | Wallmount, ISA 6-slot Backplane, 6 ISA Single Segment, AT/ATX, Rev.A1.1 | ISA | (0/6/0) | AT/ATX |
| BP-208SI-A00 | Wallmount, ISA 8-slot Backplane, 8 ISA Single Segment, AT, Rev.A0.0 | ISA | (0/8/0) | AT |
| BP-214SI-V61 | Wallmount, ISA 14-slot Backplane, 14 ISA Single Segment, AT, Rev.A0.0 | ISA | (0/14/0) | AT |