

DATA SHEET
SPECIFICATIONS
**MODEL #5145
AC GENERATOR
15 KVA - 12,000 RPM**

VOLTAGE: 120/208 VAC
PHASE: THREE
FREQUENCY: 400 HZ
POWER FACTOR: 0.75 LAG TO UNITY
REGULATION: 115-119 VAC

SPEED RANGE: 11,400-12,600 RPM
OVERSPEED: 15,000 RPM
CONTINUOUS RATING: 10 KVA
OVERLOAD: 20 KVA, 5 SEC
EFFICIENCY: 87% AT RATED LOAD



COOLING: RAM AIR
AMBIENT: -40°C TO +75°C
ALTITUDE: 0 TO 40,000 FT
LIFE: 5000 HOURS

WEIGHT: GEN: 13 LBS
 (NO HOUSING)
 26 LBS
 (W/HOUSING)
 GCU: 1.5 LBS

PROTECTIVE FUNCTIONS: OVERFREQUENCY
 440-460 HZ
 UNDERFREQUENCY
 240-260 HZ
 OVERVOLTAGE 125-130V

COMPLIANCE: MIL-STD 461A (NOTICE 3)
 MIL-STD-810C
 MIL-STD-704A (CHANGE 3)
 AFSC DH1-4 (3RD EDITION)

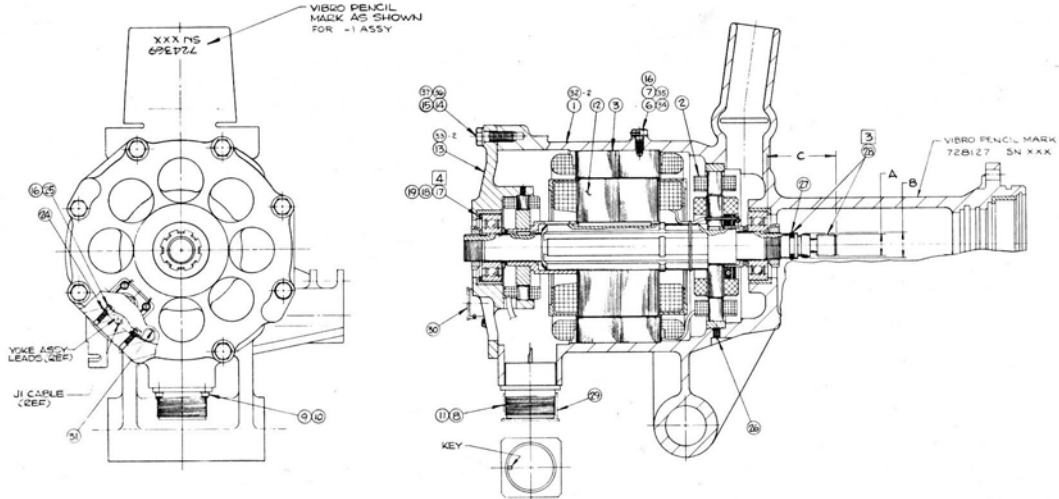
DESCRIPTION

Model 5145 generator is a brushless wound rotor field, synchronous AC generator with its own permanent magnet section to provide self-excitation. It is coupled to a Ram Air Turbine (RAT), which is deployed into the air stream for emergency purposes.

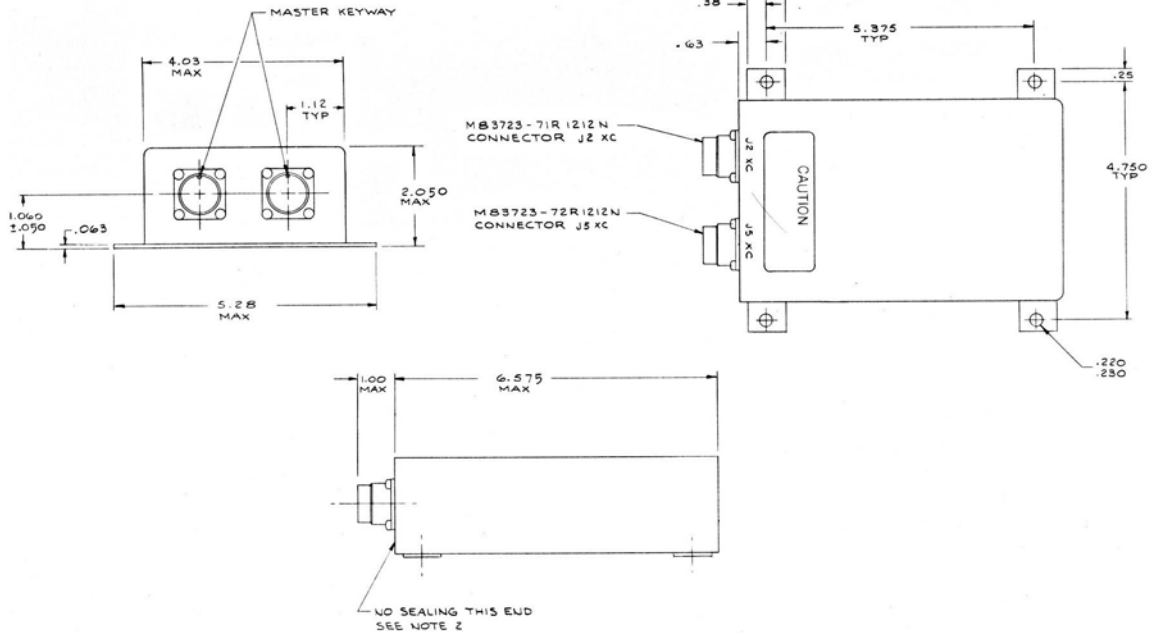
The generator and accompanying Generator Control Unit (GCU) are complemented by a cockpit located Automatic Deployment Control. The ADC serves to provide system checkout as well as a means to deploy the RAT if a malfunction occurs.

The generator and GCU are supplied to Sundstrand Corporation while the ADC is supplied directly to Canadair, the manufacturer of the CL600/601 Challenger.

OUTLINE DETAILS



GENERATOR



GENERATOR CONTROL UNIT